

HOW TO USE PHOTOVOLTAIC PANELS FOR LIGHTING



What is a PV panel for a solar lighting system? A PV panel for a solar lighting system differs from the traditional large solar panel, since it comprises four solar cells. PV panel consist of solar cells connected in series to produce a higher voltage. A single solar cell converts sunlight into electricity by generating current, which is called ???photovoltaic effect???.



What are the components of a photovoltaic lighting system? A solar lighting system: The major components of a photovoltaic lighting system are the solar panel, the battery, the charge controller, and the lighting source. Solar lights offer a lot of benefits, which explains why they are gaining popularity in recent years despite the still relatively high upfront cost.



Can you light a photovoltaic panel in a full shade? The area you will illuminate might be located in a full shade, which is okay as long as you mount your photovoltaic panels where they can be accessed by direct sunlight. Your lights will still operate in case of insufficient solar irradiance, but will shine less brightly than usual.



How to plan a solar lighting system? Ensure that the chosen areas receive ample sunlight during the day to charge the solar panels effectively. Avoid shading from trees or nearby structures that can obstruct sunlight. Mapping out the installation locations will help you plan the layout and wiring of your solar lighting system.



How does solar lighting work? Solar lighting relies on photovoltaic cells, commonly known as solar panels, to convert sunlight into electricity. This electricity is then stored in batteries and used to power the light fixtures during the night. The key components of a solar lighting system include the solar panel, battery, controller, and LED lights.

HOW TO USE PHOTOVOLTAIC PANELS FOR LIGHTING



How do I choose a solar lighting system? Contact your lighting representative for your project costs and information. Next time you are looking to light up an area and need a solar option, consult your solar lighting specialist to help you design the perfect system tailored to your specific needs. From big to small, solar LED lighting can be a great choice.



Solar Panel: 100w Polycrystalline PV Panel - ?70.00. Battery: 12v 35Ah Leisure Battery - ?50.00. LED Strip: 5m 12v 5050 LED Strip - ?12. Switch: 2 Gang Outdoor Switch - ?7.00. Fuse Box: 4-Way Automotive Fuse Box - ?6.00. Battery Lead: Ring Terminals, inline fuse and "Anderson" connector - ?5.00. Terminal Block: 4-Row Terminal Strip - ?5.50



Familiarise yourself with the solar panel components and understand their placement. This will help you connect them for a successful setup. Battery: The battery bank stores the power produced by the solar panels. Even if you're using some of the power as it's generated, excess usually needs to be stored in a deep-cycle battery for later use.



How to Choose a Solar Panel That's Best for You. As mentioned above, the inverter's wattage value and the number of bulbs are important considerations when you want to connect solar panels to light bulbs. Therefore, using the example above, you will need a solar panel with a total wattage value of 500W if you use a 500W inverter.



1. Install the solar panels on your greenhouse roof, ensuring they are in a sunny location and positioned at an angle to optimize sun exposure. 2. Connect the solar panel wires to the solar controller. 3. Attach the storage ???

HOW TO USE PHOTOVOLTAIC PANELS FOR LIGHTING



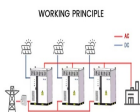
Components of a Solar Panel System. A solar panel system is made up of several key components that work together to generate and utilize solar energy. These components include: Solar panels: These are the most visible component of a solar panel system. Solar panels are made up of photovoltaic (PV) cells that convert sunlight into direct current



A study showed that reflectors on solar panels can increase their performance by up to 30%. The continuing drop in cost for home solar power generation has led to a dramatic increase in the rate of installations, for both residential and commercial use. Increasing the yield through reflection could make that an even???



All electronic equipment leads to similar concerns, and whereas many electrical goods are only in use for a few years, most PV panels are expected to last for at least 30 years. Furthermore, PV panels are used to replace other sources of electricity that usually have a much greater environmental impact.



Most commercialized solar panels are built to use visible light. But there are panels in development that might use UV or infrared light. And while some of these panels would have lower cost-to-efficiency ratios, others are more promising ???



The Integral Role of Photovoltaic Panels in Energy Conversion. Fenice Energy is leading the shift to clean energy by using photovoltaic panels. The growing use of these panels for electricity shows the urgency of ???

HOW TO USE PHOTOVOLTAIC PANELS FOR LIGHTING



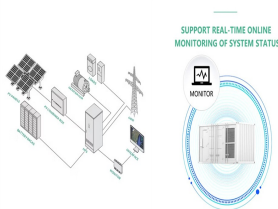
Does Using Mirrors Increase A Solar Panels Efficiency? Yes, using mirrors alongside your solar panels has been shown to increase efficiency by up to 75% in some cases. Even if your numbers aren't quite that high, you're sure to generate more power by directing more light to your panels. Will Using Mirrors Cause Damage To Your Solar Panel?



Step 6 - Determine the Solar Panel. Now that you know what the solar panel needs to produce every day to ensure that the system will operate correctly, you can find out what size solar panel system is needed. When looking at a solar panel specification, you look at the Max Power Current (I_{mp}) to see how many amps it will produce at full



Bring light to your dark shed or greenhouse with an eco-friendly, low-maintenance solar kit. Drill a hole and add a waterproof connector called an entry panel, which protects the cables between the solar panel and the ???



If you are looking for a very simple way to create an led lamp that is solar-powered, this is a basic guide that offers just that. This blogger uses a 12 V solar panel that charges the battery during the daytime. And then, during the evening, the solar panel stops providing current. The battery becomes the power source to light the 1W LED bulb.



13 Great Reasons to Use Solar Power and Solar Lighting. 10/11/21 6:30 AM. Solar Bus Stop and Shelter Design for a Brighter Transit System. This is typically used to determine the amount of power generated by a solar panel to ???

HOW TO USE PHOTOVOLTAIC PANELS FOR LIGHTING



A photovoltaic lighting system utilizes solar energy through photovoltaic panels to generate electricity for lighting purposes. These systems harness sunlight and convert it into usable electrical energy to power LED ???



Some PV cells can convert artificial light into electricity. Sunlight is composed of photons, or particles of solar energy. PV panels and arrays can use tracking systems to keep the panels facing the sun, but these systems are expensive. Most PV systems have panels in a fixed position that are usually facing directly south in the northern



Solar panels typically consist of 36 to 72 photovoltaic cells, and the panels themselves can then be connected to create a solar photovoltaic system for larger installations. Excess energy can be



1. Solar-powered transportation: A new use of photovoltaic energy
2. Wearable solar tech: A personal way to use solar power
3. Solar lighting: A popular example of solar energy
4. Portable solar: Using solar on the go
5. Solar ventilation: Cooling your home with solar
- 6.



With the increasing popularity of solar power and the environmental benefits it offers, many homeowners are turning to solar lighting as an energy-efficient and cost-effective solution. By following this guide, you will learn how to plan, ???

HOW TO USE PHOTOVOLTAIC PANELS FOR LIGHTING



How to install a solar powered light on a house wall. Before you start, have a look at the best place to install your solar-powered light. The more sunlight the panel can be exposed to, the better your light will be. Avoid places directly under the ???



To use portable solar panels effectively, they are often paired with a solar generator. This generator includes a solar inverter, charge controller, and a solar battery, all necessary components for safely operating electrical ???



To make solar lights, you'll need a few components like solar panel, rechargeable batteries, LEDs, and a controller circuit. The solar panel absorbs sunlight to convert it into electrical energy, which is then stored in the ???



Solar Panel Lighting Kit . Some people install solar panels on their roofs to get more power for their interior appliances. However, you don't need to invest that much money to take advantage of solar power. You can buy solar panel lighting kits to power lights in your home. A solar panel lighting kit includes: A solar panel to power the light



Therefore using solar power for sheds means fewer cables, less destruction and cheaper longer term running costs. This guide will share all you need to know about solar panels for sheds. To be clear this will mainly focus on solar panels as a source of overall power, as opposed to solar powered lighting systems only.

HOW TO USE PHOTOVOLTAIC PANELS FOR LIGHTING



Solar Panel. You can mount your solar panel on the roof, on the ground, in a window, or outside on the shed's wall. I chose the latter and built a DIY wall mount for my solar panel. Here's how it turned out: If you also decide to mount yours on a wall, check out my tutorial on how to wall mount a solar panel.



All solar lighting has a solar panel that uses sunlight to charge up during the day, stored energy then releases as light after dusk. Most have sensors to automatically power on as it becomes dark. When placing your ???



3 Description of your Solar PV system Figure 1 ??? Diagram showing typical components of a solar PV system The main components of a solar photovoltaic (PV) system are: Solar PV panels ??? convert sunlight into electricity. Inverter ??? this might be fitted in the loft and converts the electricity from the panels into the form of electricity which is used in the home.



In this article, we discuss how much solar energy it takes to power your television and lighting. Using Solar Panels to Power Your TV and Lighting.

The reason for this is that getting a solar panel with the same wattage won't guarantee continuous use. When it comes to solar panel wattage, it's advised to go for one with a slightly higher

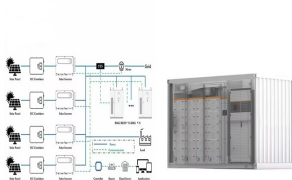


Assuming reserving 50% of it for photovoltaic panel production and knowing that using the crystalline technique requires 20 kg of silicon per kWp to be produced, each year world production could increase by 750 MW (0.75 GW); considering that existing plants typically lose 1% efficiency each year, it is not true that the photovoltaic production can go up by 0.75 GW ???

HOW TO USE PHOTOVOLTAIC PANELS FOR LIGHTING



The solar panels that you see on power stations and satellites are also called photovoltaic (PV) panels, or photovoltaic cells, which as the name implies (photo meaning "light" and voltaic meaning "electricity"), convert sunlight directly into electricity. A module is a group of panels connected electrically and packaged into a frame (more commonly known as a solar ???



Either the sun is providing the light directly, like through a window or skylight, or capturing the sunlight for use at another time, like with photovoltaic lights. Each of these ways to utilize the sun for our lighting needs has different variations, ???