

# HUAILIN INSTALLS SOLAR POWER STATION



13. Solar collectors capture and concentrate sunlight to heat a synthetic oil called terminal, which then heats water to create steam. The steam is piped to an onsite turbine-generator to produce electricity, which is then ???



CGN New Energy (Ali) Co., Ltd 50MW trough solar thermal power project concentrated solar power system bid again. Updated? 1/4 ?2023-05-08 heat collection area 1720 square meter, a total of 480 collector combinations are designed and installed, divided into 160 heat collection loop, the total heat collection area of the power station is 825,600



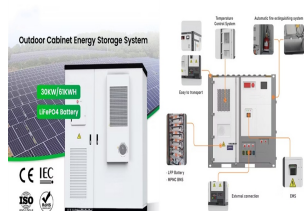
This page provides information on CGN Delingha - 50MW Trough CSP project, a concentrating solar power (CSP) project, with data organized by background, participants, and power plant configuration. Project Overview. Power Station: CGN Delingha - 50MW Trough Location: Delingha Haixi Qinghai China



Its portfolio includes developing 66 small residential solar rooftops, two 5MW solar farms as well as a renewable energy power plant in the SPP Hybrid programme that is composed of 50 MW solar PV together with a 54 MWh energy storage system. On top of which, Blue Solar also provides solar rooftop and energy storage installation services.



India is on the cusp of a solar revolution and we at Tata Power Solar have been right at the forefront, leading the move towards sustainable energy solutions. Investing in rooftop solutions leads to great savings, while protecting the environment. Tata Power Solar offers solar rooftop for home. Save and Earn from your idle rooftop space.



Verogy, a solar project developer, completed a 1.1-MWDC rooftop solar installation at real estate investment firm Plymouth Industrial REIT's 68,000-sq-ft warehouse in Portland, Maine. "This collaboration with Plymouth demonstrates the power of partnerships in advancing clean

# HUAILIN INSTALLS SOLAR POWER STATION

---

energy initiatives," said Will Herchel, CEO of Verogy.

# HUAILIN INSTALLS SOLAR POWER STATION



Shop solar generator kits, portable power stations, solar panels, and more. Scroll to content. ??? Up to 56% OFF | Cyber Monday Ends. D: H: M: S. solar generator portable power station. Product. Portable Power Stations = 1KWh; 1kWh - 2kWh ? 1/4 ?3kWh; Solar Generators ? 1/4 ?1kWh; 1kWh -2kWh ? 1/4 ?3kWh; Premium Series. Ecosystem.



1.85%? Huawei FusionSolar's solution uses the intelligent grid connection algorithm to enable inverters to adapt to power grids in all scenarios (SCR ??? 1.1) and provide excellent power quality, improving grid ???



Total Kenya has connected 107 of its service stations to solar energy, making it one of the biggest firms to significantly reduce its reliance on Kenya Power. The move comes at a time when solar is becoming a cheaper and more reliable bet. The firm says it has installed some 3,390 solar panels and is [???



Bohol will soon use energy from the sun through its own solar power plant after first row of solar panels was installed yesterday afternoon, May 9, 2024 in Barangay San Vicente in Dagohoy town. The P1.2 billion Dagohoy ???



As a pivotal project for power supply in Xizang, the Caipeng photovoltaic power station will ultimately reach a total installed capacity of 150 megawatts. This remarkable facility ???



Solar Panels perform at optimum capacity when placed in direct sunlight. When you install your Solar Power system, try to position your photovoltaic panels directly under the noontime sun for maximum efficiency from your photovoltaic unit.. Before Installation, take care of any

# HUAILIN INSTALLS SOLAR POWER STATION

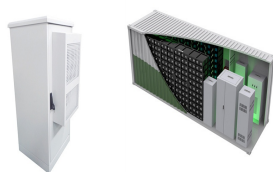
---

obstructions to sunlight. Remove all unnecessary obstructions and items such as ???

# HUAILIN INSTALLS SOLAR POWER STATION



Solar power plants are systems that use solar energy to generate electricity. They can be classified into two main types: photovoltaic (PV) power plants and concentrated solar power (CSP) plants. Photovoltaic power plants convert sunlight directly into electricity using solar cells, while concentrated solar power plants use mirrors or lenses???



After installation, the solar power plant produces electrical energy at almost zero cost. The life of a solar plant is very high. The solar panels can work up to 25 years. This plant is not causing pollution. There are no moving parts in solar cells. So, maintenance is not needed to keep a ???



New Delhi: The Central Railway has installed a floating solar plant of 10 MWp capacity in the Igatpuri lake located in the Western Ghats, a first-of-its-kind initiative by the Indian Railways,



Energy experts ??? and even Greenpeace ??? underestimated solar power's rapid global growth. Now solar could become the world's biggest power source within the next decade. From 2010 to 2020, the



The Ashalim power station is a concentrated solar power station in the Negev desert near the community settlement of Ashalim, south of the district city of Be'er Sheva in Israel consists of three plots with three different technologies through which the station combines 3 kinds of energy: solar thermal energy, photovoltaic energy, and natural gas. [1] [2]

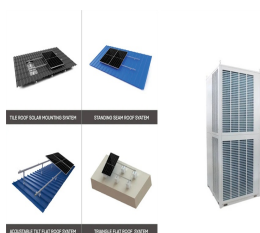


China's Huadian Haijing Salt-PV Complementary Power Station, the world's largest, has successfully connected to the grid, ushering in a new era of green energy. This ambitious "three-in-one" project harmoniously combines ???

# HUAILIN INSTALLS SOLAR POWER STATION



Turkey completes the installation of its inaugural Floating Solar Power Plant, signaling a move towards renewable energy adoption and water conservation. With vast reservoir potential, the nation aims to harness solar energy to meet ???



It went from 4 yuan per kilowatt-hour to about 1 yuan. China worked on big PV power stations and also added solar systems to buildings and places without power. The Chinese PV industry has grown a lot in quality. National Solar Mission (NSM). It aims for a huge target of 100 GW by 2022. So far, it has reached around 70.10 GW of installed



Depending on the size and efficiency of the solar panels used, a 10 kW home solar power station located on a pitched roof covers an area of up to 75 sq.m. Solar Power Plant on Flat Roof. Placing solar equipment on a flat roof is an option that is most often used for larger structures such as warehouses, retail and office buildings, etc.



If the site is not privately owned, a lease agreement signed by the owner will be necessary in order to install a power plant. These lease agreements typically last 25 years with the potential for extension, and they should include restrictions regarding the development of structures on neighboring land that might shade the modules.



It is not overly difficult to install solar panels. They fit onto a frame and then are fastened into place. However, installing the entire solar array can be more challenging, especially if you do not have electrical wiring experience. Damage to the panels, array, and solar components in case of power spikes; Each solar component that



Key Takeaways. Understanding the potential of a 10 mw solar power plant to meet energy demands.; Exploring the financial benefits and return on investment for solar power development.; Appraising Fenice Energy's role ???

# HUAILIN INSTALLS SOLAR POWER STATION



Aspects like land requirements and financial logistics are vital considerations for the scale and feasibility of solar power plants in India. With over 20 years of clean energy expertise, Fenice Energy remains at the forefront of providing robust and efficient solar power plant components. Understanding the Basic Components of Solar Power Plant



Utility-scale solar farms. A utility-scale solar farm (often referred to as simply a solar power plant) is a large solar farm owned by a utility company that consists of many solar panels and sends electricity to the grid. Depending ???



Datong Solar Power Top Runner Base. Located in Datong City, Shanxi Province, it is the country's 3rd largest solar power plant. China's National Energy Administration aimed to install solar plants in this area. After successful completion of the project's 1st phase in 2016, this solar plant now has a total capacity of 1.1 gigawatts.



Solar power plants are widely used to supply power to petrol stations (gas stations) and other automotive infrastructure. Solar panels can be installed both on the roofs of gas stations, and next to them in the form of solar canopies, including those that function as covered parking lots or charging stations for electric vehicles.



In the East-West Corridor, solar power plants with a capacity of 1,519 kWp have been installed at Salt Lake Sector V and Central Park stations, along with the Central Park Depot. Meanwhile, the Purple Line features a 1,400 kWp plant at the Joka carshed, and the Orange Line has a 500 kWp plant installed at the new carshed in Kavi Subhash.