

HYDROPOWER ENERGY STORAGE PROJECT



What is pumped storage hydropower (PSH)? Pumped storage hydropower (PSH) is a type of hydroelectric energy storage. It is a configuration of two water reservoirs at different elevations that can generate power as water moves down from one to the other (discharge), passing through a turbine. The system also requires power as it pumps water back into the upper reservoir (recharge).



What is pumped storage hydropower? Pumped storage hydropower is the most dominant form of energy storage on the electric grid today. It also plays an important role in bringing more renewable resources onto the grid. PSH can be characterized as open-loop or closed-loop. Open-loop PSH has an ongoing hydrologic connection to a natural body of water.



Could pumped storage transform hydroelectric projects? New research released Tuesday by Global Energy Monitor reveals a transformation underway in hydroelectric projects using the same gravitational qualities of water, but typically without building large, traditional dams like the Hoover in the American West or Three Gorges in China. Instead, a technology called pumped storage is rapidly expanding.



Is pumped storage hydropower the world's water battery? Below are some of the paper's key messages and findings. Pumped storage hydropower (PSH), the world's water battery, accounts for over 94% of installed global energy storage capacity, and retains several advantages such as lifetime cost, levels of sustainability and scale.



How many pumped storage hydropower projects are there in 2024? The 2024 World Hydropower Outlook reported that 214 GW of pumped storage hydropower projects are currently at various stages of development. Recent atlases compiled by the Australian National University identify 600,000 identified off-river sites suggesting almost limitless potential for scaling up global PSH capacity.

HYDROPOWER ENERGY STORAGE PROJECT



What is a closed-loop pumped storage hydropower system? With closed-loop PSH, reservoirs are not connected to an outside body of water. Open-loop pumped storage hydropower systems connect a reservoir to a naturally flowing water feature via a tunnel, using a turbine/pump and generator/motor to move water and create electricity.



A new report, Hydropower Investment Landscape, developed by the National Renewable Energy Laboratory (NREL), provides a comprehensive analysis of both the risks and opportunities for investing in small- to medium-sized hydropower and PSH projects. Key findings from the study, which was funded by the U.S. Department of Energy's (DOE's) Water Power a?]



As the world shifts towards a more sustainable energy future, pumped storage hydropower (PSH) projects are expected to play an increasingly important role in energy storage and grid stability. Integration with renewable energy sources a?? PSH projects are well-suited to integrate with renewable energy sources, such as wind and solar, by



1. Hydropower plants can adversely affect surrounding environments. While hydropower is a renewable energy source, there are some critical environmental impacts that come along with building hydroelectric plants to be aware of. Most importantly, storage hydropower or pumped storage hydropower systems interrupt the natural flow of a river system.



The Goldendale Energy Storage Project is a cornerstone of both Washington's and the broader Pacific Northwest's clean energy economy. It will provide quality jobs and rural economic development while helping Washington and the region meet its clean energy goals with minimal environmental impacts.

HYDROPOWER ENERGY STORAGE PROJECT



1.0 Pumped Storage Hydropower: Proven Technology for an Evolving Grid
Pumped storage hydropower (PSH) long has played an important role in America's reliable electricity landscape. The first PSH plant in the U.S. was constructed nearly 100 years ago. Like many traditional hydropower projects, PSH provides the flexible storage inherent in reservoirs.



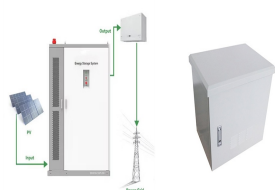
Globally, communities are converting to renewable energy because of the negative effects of fossil fuels. In 2020, renewable energy sources provided about 29% of the world's primary energy. However, the intermittent nature of renewable power, calls for substantial energy storage. Pumped storage hydropower is the most dependable and widely used option a?|



Pumped storage hydropower (PSH) is one of the most-common and well-established types of energy storage technologies and currently accounts for 96% of all utility-scale energy storage capacity in the United States. than \$8.6 million for 13 hydropower technical assistance projects and nearly \$25 million for 25 hydropower and marine energy

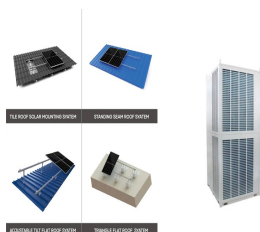


Pumped storage hydropower remains the largest contributor to U.S. energy storage, representing roughly 96% of all commercial storage capacity in the United States in 2022. Hydropower is a clean, renewable, domestic source of energy and provides enormous benefits to the country's grid. Hydropower's flexibility allows it to seamlessly

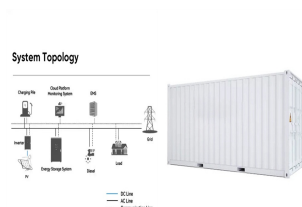


Pumped hydro energy storage (PHES) has been in use for more than a century to assist with load balancing in the electricity industry. PHES entails pumping water from a lower reservoir to a nearby upper reservoir when there is spare power generation capacity (for example, on windy and sunny days) and allowing the water to return to the lower

HYDROPOWER ENERGY STORAGE PROJECT



pumped storage hydropower (PSH) projects (Banner Mountain by Absaroka Energy and Goldendale by Rye Development and Copenhagen Infrastructure Partners) were selected by Partners, developers of the Goldendale Energy Storage Project. The collaboration with these industry partners and their consultants was outstanding throughout the project. We



Energy storage is essential in enabling the economic and reliable operation of power systems with high penetration of variable renewable energy (VRE) resources. Currently, about 22 GW, or 93%, of all utility-scale energy storage capacity in the United States is provided by PSH. To



for the sole purposes of initial fill and periodic recharge needed for project operation 14.57 GW of Closed-loop PSH hydropower Closed-Loop PSH and ANU Global Atlas >600,000 potential sites with 23,000 TWh of storage PSH's role in clean energy transition Pumped storage hydropower (PSH) will



America's large source of grid-scale energy storage grid will play a key role in meeting ambitious clean energy goals. Washington, D.C. (9/22/21) a?? On World Energy Storage Day, the National Hydropower Association (NHA) today released the 2021 Pumped Storage Report, a comprehensive review of the U.S. pumped storage hydropower industry. In



Another first was recently announced by Gilkes Energy in the UK, who released details of its planned 900MW Earba Storage Project in Scotland, the company's first pumped storage hydropower scheme. Earba Storage Project will store up to 33,000 MWh of energy, making it the largest such scheme in the UK in terms of energy stored.

HYDROPOWER ENERGY STORAGE PROJECT



Hydropower is making its comeback, and not just as a generation source. Water can act as a battery, too. It's called pumped storage and it's the largest and oldest form of energy storage in the country, and it's the most efficient form of large-scale energy storage. Hydropower was America's first renewable power source.



A new US energy storage project will adapt the power of pumped storage hydro to subsea locations near offshore wind farms and energy-hungry coastal cities, leveraging 3-D printing and the natural



Pumped storage hydropower (PSH), "the world's water battery", accounts for over 94% of installed global energy storage capacity, and retains several advantages such as lifetime cost, levels of a?|



The Ground-Level Integrated Diverse Energy Storage (GLIDES) project concluded R& D of a new form of PSH targeting the gap between small-scale batteries and large grid-scale PSH options. The Integrated Hydropower Storage Systems project had previously evaluated the financial performance of these four cascading run-of-river hydropower plants



"Tomorrow's clean energy grid needs more energy storage solutions," said Tim Welch, hydropower program manager at the U.S. Department of Energy's Water Power Technologies Office (WPTO). "Pumped storage hydropower can be one of those solutions, kicking in to provide steady power on demand and helping the country build a resilient and

HYDROPOWER ENERGY STORAGE PROJECT



Pumped hydro energy storage and CAES are most common in off-grid and remote electrification applications. The construction of a new pumped hydro project is subject to the availability of funds, either from the government, private sector investors or multiple financing sources, and it is a challenging and complex task (IHA, 2018b).



Overview Worldwide use Basic principle Types Economic efficiency Location requirements Environmental impact Potential technologies



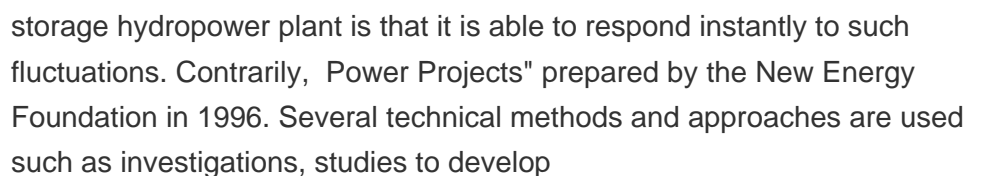
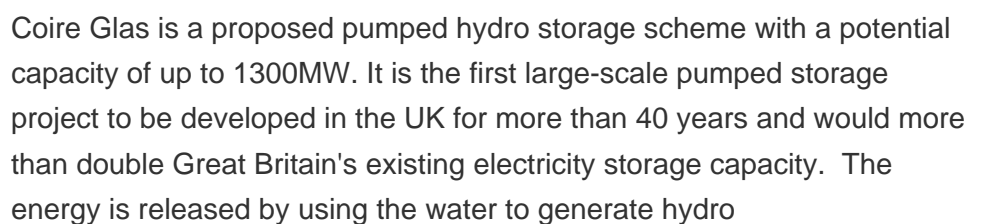
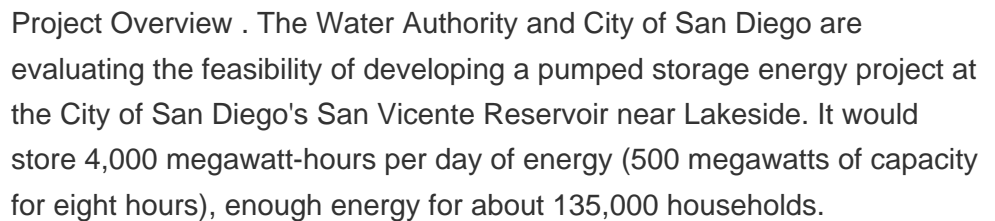
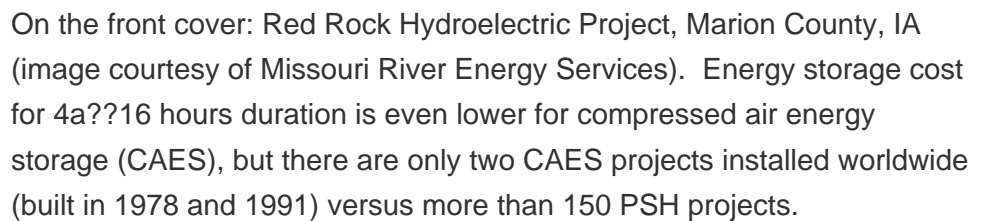
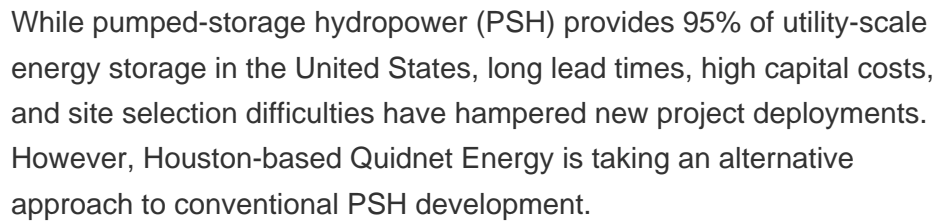
Small Hydropower. Although definitions vary, DOE defines small hydropower plants as projects that generate between 100 kilowatts and 10 MW. Micro Hydropower. A micro hydropower plant has a capacity of up to 100 kilowatts. A small or micro hydroelectric power system can produce enough electricity for a single home, farm, ranch, or village.



Hydropower or marine energy-producing projects or energy storage projects may be eligible for the credit. The base credit value is 6% of the qualified investments in qualified advanced energy projects of the taxpayer and the enhanced value is 30% for projects meeting prevailing wage and apprenticeship requirements.



With the increasing global demand for sustainable energy sources and the intermittent nature of renewable energy generation, effective energy storage systems have become essential for grid stability and reliability. This paper presents a comprehensive review of pumped hydro storage (PHS) systems, a proven and mature technology that has garnered significant interest in a?



HYDROPOWER ENERGY STORAGE PROJECT



Pumped storage hydropower (PSH) is a form of clean energy storage that is ideal for electricity grid reliability and stability. PSH complements wind and solar by storing the excess electricity a?