

IDENTIFY GENUINE PHOTOVOLTAIC PANELS



Big solar panel system: 1kW, 4kW, 5kW, 10kW system. These include several solar panels connected together in a system (2 a?? 50 solar panels). Another would be some wiring issue. It's really hard to tell without seeing the wiring but it might a good idea to get a hands-on electrician or solar panel installer to recheck the wiring and see



For example, a solar panel with a voltage of 20V and an amperage of 5A has a wattage of 100W. This means the panel can produce 100 watts of power under optimal conditions. Since optimal conditions are impossible to achieve at all times, I usually recommend to estimate a 70-80% efficiency when calculating how much solar you need for a specific a?|



genuine PV system is extremely difficult since electrical solar panel are given in Figure 4 and [1] gure 5. learning framework to identify the hotspot in photovoltaic module using infrared thermography, Solar Energy, Volume 208,2020, ISSN 0038-092X.



Solar panels are generally quite reliable. Many owners don't experience technical faults in over a decade of ownership. Nearly seven in 10 owners had had no problems with their solar panels in our survey of over a?|



A kWh is a unit of measurement used to identify the amount of electricity used in a home. There are 1000 watts in one kWh. As an example, if you switched on a 100w light bulb, it would take ten hours to use one kWh. Solar panel subscriptions may also restrict what you can do with your roof, such as adding skylights or installing a different

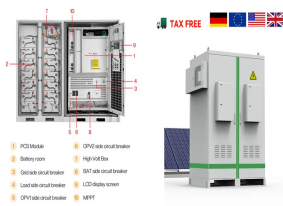


Selecting a genuine solar system with an original panel is important. In this writing, we will present 13 tips to recognize fake solar panels and help you understand the existence of fake panels. You may be concerned about a?|

IDENTIFY GENUINE PHOTOVOLTAIC PANELS



Solar photovoltaic panel defect detection is an important part of solar photovoltaic panel quality inspection. The SE attention mechanism module is incorporated to effectively identify the small target defects of photovoltaic panels in special environments. et al.: You only look once: unified, real-time object detection. In: 2016 IEEE



We know you have lots of queries regarding solar panel sizes and wattage, so let us discover their answers. How to Calculate Solar Panel Sizes and Wattage. When designing an efficient and cost-effective PV system for a?



Real-World Impact for Solar Panel Owners. Let's delve into how the study's findings on vertical solar panels can significantly impact solar panel owners, particularly in terms of performance, longevity, and cost savings. information stored or retrieved for this purpose alone cannot usually be used to identify you. Marketing Marketing.



Identifying genuine solar panels is crucial to ensuring the longevity and efficiency of your solar power system. This guide will help you understand the importance of verifying product authenticity and provide practical steps to avoid counterfeit products.



Academics predict that a significant volume of end-of-life (EOL) photovoltaic (PV) solar panel waste will be generated in the coming years due to the significant rise in the production and use of PV solar panels since the late 20th Century. This study focuses on identifying a sustainable solution for the management of EOL PV solar panel waste by a?

IDENTIFY GENUINE PHOTOVOLTAIC PANELS



A typical 4kW solar panel system for 2-3 bedroom houses costs GBP5,000 - GBP6,000 with installation. Added together, the total cost of solar panels and a battery in the UK is GBP13,000 - GBP15,500.



Key learnings: Solar Cell Definition: A solar cell (also known as a photovoltaic cell) is an electrical device that transforms light energy directly into electrical energy using the photovoltaic effect.; Working Principle: The working of solar cells involves light photons creating electron-hole pairs at the p-n junction, generating a voltage capable of driving a current across a?]



Connect the positive lead of the multimeter to the positive terminal of the solar panel, and the negative lead to the negative terminal of the solar panel. Measure the open-circuit voltage (OCV) of the solar panel. Measure the short-circuit a?]

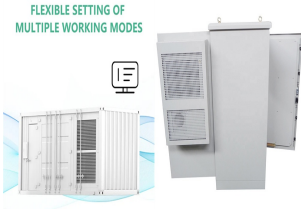


Solar panel efficiency is a measure of total energy converted into electrical energy and is usually expressed as a percentage. Residential and commercial solar panels have an average efficiency rating of 15 to almost 23%, but researchers have developed more efficient PV panels in laboratories. The most efficient solar panels are commonly dark, non-reflective a?]



The presented PV monitoring system can identify if the photovoltaic panel exhibit degradation due to fault conditions. In order to do that, the monitoring system implements an efficient small

IDENTIFY GENUINE PHOTOVOLTAIC PANELS



By monitoring your solar production and usage, you can make adjustments to your energy usage and save money on your energy bills.. Types of Solar Panel Meters. There are two types of solar panel meters: Analogue Meters: Analogue meters are the traditional meters that measure the amount of electricity consumed by a residential customer. They have a spinning disc that a?



Solar Photovoltaics - Cradle-to-Grave Analysis and Environmental Cost 2024. Environmental Cost of Solar Panels (PV) Unlike fossil fuels, solar panels don't produce harmful carbon emissions while creating electricity which makes them a wonderful source of clean energy. However, solar panel production is still reliant on fossil fuels though there are ways to reduce a?



Red Flags to Identify Worst Solar Panel Companies Scams. With the boom in the solar industry, there is also a boom in solar scams. Be careful and watch out for the following red flags, they'll help you identify the a?



Photovoltaic multimeters with integrated temperature sensors provide real-time data to ensure optimal operation. Data Logging: Photovoltaic multimeters allow for precise measurement and analysis of solar panel performance. By identifying issues like shading, wiring problems, or underperforming panels, professionals can take corrective

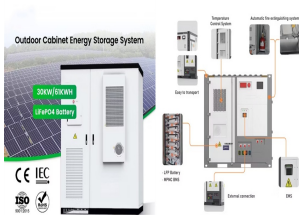


You can use this serial number to compare with the records on the official website, or contact the customer service of jinko solar panel to identify the authenticity. If the serial number of one of your jinko solar panels does not match any record, then you are likely to have purchased a fake jinko solar panel. 3. Search for certificates and labels

IDENTIFY GENUINE PHOTOVOLTAIC PANELS



The framework seems to use pure black pixels as a key criterion for identifying dust areas, thereby closely associating the dust regions on the photovoltaic panel surface with the panel itself. Since pure black pixels are less common in general images, the framework does not easily recognize similar dust-like areas that are not on the surface of the photovoltaic panels a?|



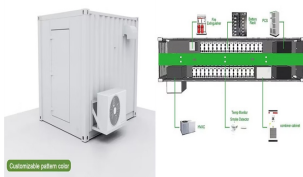
If you are concerned that your solar panel system is not reaching the output level it should be, here's how to test solar panels. and identify any potential issues. 3. Use an app to monitor generation This ensures all reviews are genuine and trustworthy. 2. Unlike many companies we actively monitor our installers based on high standards



Current Power Output: By monitoring the real-time power output of your solar energy system in kilowatts (kW) using smart metres, you can identify any sudden drops or fluctuations in solar radiation that may indicate a fault or maintenance requirement for your solar metres.; Total Energy Generated: Tracking the cumulative energy generated over time helps assess the a?|



Genuine solar panels are expensive to produce due to the high-quality materials and manufacturing processes involved. If a panel is being sold at a significantly lower price than the market average, it's likely a counterfeit product. At Morca, our team of solar specialists can help you identify a fake solar panel and provide guidance on



The Open Circuit Voltage (Voc) rating of a solar panel, on the other hand, indicates the voltage measured across the panel's terminals under ideal conditions when no load is connected. For instance, as shown in the image above, my solar panel has a Voc of 22.5 Volts. This means that under Standard Testing Conditions, the panel should measure