

INDUSTRIAL ENERGY STORAGE POWER STATION DESIGN TEMPLATE



What is ISO 50001 energy management system? n cost. An ISO 50001 Energy Management System allows organizations to manage their energy consumption. Therefore, you will be reducing energy bills and increasing company savings. Evaluate your organization's goals, incorporate greenhouse gas emissions when using energy more efficiently. ABB Ability™ Energy & Asset



How does Enphase solar + storage work? Since Enphase solar + storage is 40 A, it is directly connected to the main load center. For simple installations with no backup Enphase storage can save customers money by optimizing power consumption based on time of use tariffs. Here is an example of a main load center that allows up to 40 A of backfeed.



What information is included in the Enphase ensemble™ energy management documents? This document provides site surveyors and design engineers with the information required to evaluate a site and plan for the Enphase Ensemble™ energy management system. The information provided in the documents supplements the information in the data sheets, quick install guides and product manuals.

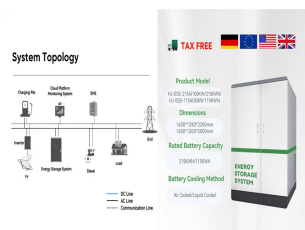


What is a 4 MWh battery storage system? 4 MWh BESS includes 16 Lithium Iron Phosphate (LFP) battery storage racks arranged in a two-module containerized architecture; racks are coupled inside a DC combiner panel. Power is converted from direct current (DC) to alternating current (AC) by two



Figure 2. An example of BESS architecture. Source Handbook on Battery Energy Storage System Figure 3. An example of BESS components - source Handbook for Energy Storage Systems . PV Module and BESS ???

INDUSTRIAL ENERGY STORAGE POWER STATION DESIGN TEMPLATE



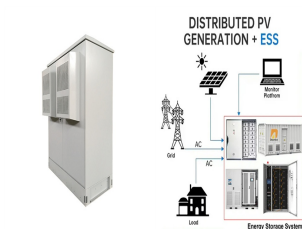
The company's zinc-based energy storage system can be up to 80 percent less expensive than comparable lithium-ion systems for long-duration applications. Importantly, its energy storage system can operate in cold and ???



Despite widely known hazards and safety design of grid-scale battery energy storage systems, there is a lack of established risk management schemes and models as compared to the chemical, aviation



Commercial and industrial energy storage refers to the use of energy storage systems for commercial and industrial applications to help industrial businesses and commercial buildings ???



On November 16, Fujian GW-level Ningde Xiapu Energy Storage Power Station (Phase I) of State Grid Times successfully transmitted power. The project is mainly invested by State Grid ???



Energy storage is a critical component of any micro-grid. Whether the microgrid is one circuit within a building, a mobile power station, or an entire campus, our energy storage solutions can be configured to meet the power ???

INDUSTRIAL ENERGY STORAGE POWER STATION DESIGN TEMPLATE



overview. Battery Energy Storage Solutions: our expertise in power conversion, power management and power quality are your key to a successful project Whether you are investing in Bulk Energy (i.e. Power Balancing, Peak ???



Choose and download Energy Storage PowerPoint templates, and Energy Storage PowerPoint Backgrounds in just a few minutes. And with amazing ease of use, you can transform your "sleep-inducing" PowerPoint presentation into ???



A commercial and industrial energy storage system Project features 5 units of HyperStrong's liquid-cooling outdoor cabinets in a 500kW/1164.8kWh energy storage power station. The "all-in-one" design integrates batteries, BMS, liquid ???



The article first introduces the concept of industrial and commercial energy storage and energy storage power stations, outlining their respective roles in energy storage, management, and grid stability. It then delves into a ???



It provides details on types of charging stations, battery storage systems, and ensuring safety and protection from lightning strikes and power surges in the electrical systems. The project aims to design a wireless ???

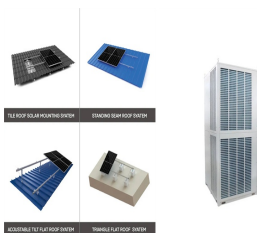
INDUSTRIAL ENERGY STORAGE POWER STATION DESIGN TEMPLATE



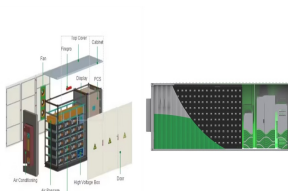
Count on a fully integrated storage system. Our BESS solutions are: Optimized for commercial and industrial energy storage projects. Equipped with integration controls for solar PV and generators. Backup power-ready and designed to ???



TU Energy Storage Technology (Shanghai) Co., Ltd., established in 2017, is a high-tech enterprise specializing in the design, development, production, sales, and service of energy storage battery management systems (BMS) and ???



This article provides an overview of industrial and commercial energy storage power stations, focusing on their construction, operation, and maintenance management. It discusses the key steps in site selection and ???



The Power Industry is the backbone of the industrial world, supplying essential energy to industrial, manufacturing, commercial and residential customers around the globe. In developed economies with mature power markets, investment is ???



All-in-one, high-performance energy storage system for various industrial and commercial applications. Highly suitable for all kinds of outdoor applications such as EV charging stations, industrial parks, commercial areas, housing ???