

INDUSTRIAL PARK ENERGY STORAGE PANORAMA NETWORK



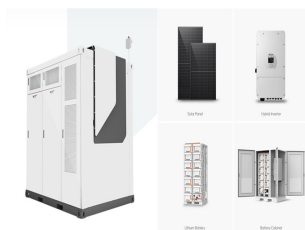
How can big data industrial parks improve energy storage business model? Combined with the energy storage application scenarios of big data industrial parks, the collaborative modes among different entities are sorted out based on the zero-carbon target path, and the maximum economic value of the energy storage business model is brought into play through certain collaborative measures.



Does an industrial park need an energy control center? The industrial park must have an energy control center. That center would be the connection between prosumers, energy storage facilities and the power supply grid outside the industrial park. The prosumers cannot produce enough energy due to the changeable meteorological conditions.



What is the heating and cooling load of the Industrial Park? It is assumed that land area occupied by the industrial park is 26 km², and 24 km² is adopted for buildings. The heating and cooling loads of buildings are shown in Fig. 4 (a), which are simulated by the hourly air temperature. Among them, the maximum cooling load is 2933.78 kW, and the maximum heating load is 1439.52 kW.



Are big data industrial parks a zero carbon green energy transformation? From the standpoint of load-storage collaboration of the source grid, this paper aims at zero carbon green energy transformation of big data industrial parks and proposes three types of energy storage application scenarios, which are grid-centric, user-centric, and market-centric.

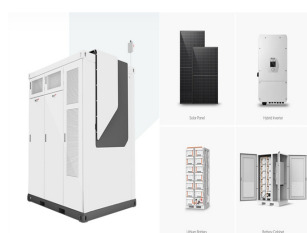


What are the productive procedures in a big data industrial park? Among the users, the productive procedures involve the use of energy such as cold, heat, electricity, and gas. The case simulation was conducted by the software, and the daily load variation curve of the big data industrial park was derived as Fig. 6.

INDUSTRIAL PARK ENERGY STORAGE PANORAMA NETWORK



What is net-zero energy industrial park (nzeip)? The nomenclature as NZEIP is not found anywhere, and the author suggests Net-Zero Energy Industrial Park to referee for industrial systems that completely satisfy the required energy necessitate with their own energy production from renewables.



A park integrated energy system (PIES) is internally coupled with multiple energy sources for joint supply, which can meet the demand of terminal multi-energy loads, realize the energy ladder utilization, and further optimize the economy of multi-energy system (Wang et al., 2020, Li et al., 2023a). With the characteristics of good economic



Battery energy storage technology is an important part of the industrial parks to ensure the stable power supply, and its rough charging and discharging mode is difficult to meet the application requirements of energy saving, emission reduction, cost reduction, and efficiency increase. As a classic method of deep reinforcement learning, the deep Q-network is widely a?|

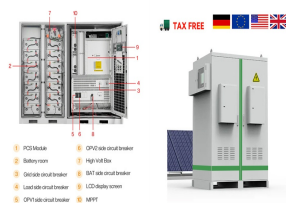


Numerous researchers have studied the scheduling method of multi-energy coupling in IPs. Aghdam et al. [8] proposed a two-layer optimization model for multi-energy type virtual energy storage system, Mirzaei et al. [9] implemented the scheduling of a multi-energy system based on a hybrid robust-stochastic approach, Ahmadi et al. [10] established a a?|



To alleviate the energy crisis and improve energy efficiency within the global low-carbon movement [1], different types of distributed energy resources such as photovoltaic [2], wind power [3] and thermoelectric generator [4] have been extensively developed and deployed [5].Energy storage system has also gained widespread applications due to their ability to a?|

INDUSTRIAL PARK ENERGY STORAGE PANORAMA NETWORK



Research on demand management of hybrid energy storage system in industrial park based on variational mode decomposition and Wigner??Ville distribution. Author links open overlay panel Jicheng Fang a, Qingshan Xu a b, which puts huge pressure on the power distribution network in Refs. [1], [2], [3]. In this regard, countries in the world



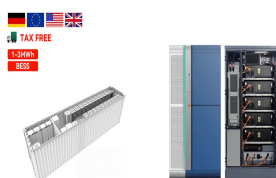
The multi-vector energy solutions such as combined heat and power (CHP) units and heat pumps (HPs) can fulfil the energy utilization requirements of modern industrial parks. The energy a?



A park microgrid refers to the supply and management of energy within a park through distributed power generation sources, microgrid network architecture, load management, and energy storage



And taking an industrial park in Shanghai as an example, the optimal energy structure and hydrogen production plan were obtained using the model, and comparisons between the plans were made, including carbon emission analysis, analysis of the impact of energy storage on energy structure, and feasibility analysis and economic evaluation of low



The application of a hybrid energy storage system can effectively solve the problem of low renewable energy utilization levels caused by a spatiotemporal mismatch between the energy a?

INDUSTRIAL PARK ENERGY STORAGE PANORAMA NETWORK



DOI: 10.1109/EEPS58791.2023.10256852 Corpus ID: 262131321; Energy Storage Configuration Optimization Method for Industrial Park Microgrid Based on Demand Side Response @article{Yang2023EnergySC, title={Energy Storage Configuration Optimization Method for Industrial Park Microgrid Based on Demand Side Response}, author={Xiaonan Yang and a?|



The industrial park's energy system includes a variety of energy sources and energy-consuming equipment, with diverse load types and high reliability requirements for power supplies. energy storage devices can stabilize the fluctuating output of renewable energy with high construction and operation costs [2]. At the same time, the energy



In the industrial sector, energy consumption accounts for over 32% of the total energy consumption. Within industrial energy usage, thermal energy predominates, constituting 74% of the total, with low-grade thermal energy (<150 °C) representing 30%. Currently, this portion of thermal energy is primarily met through medium and low-pressure steam.



Heng Luo, Xiao Yan, etc., Charging and Discharging Strategy of Battery Energy Storage in the Charging Station with the Presence of Photovoltaic, Energy Storage Science and Technology, 2022(1),275-282;



DOI: 10.1360/nso/20230051 Corpus ID: 265297462; Study on the hybrid energy storage for industrial park energy systems: advantages, current status, and challenges @article{Guo2023StudyOT, title={Study on the hybrid energy storage for industrial park energy systems: advantages, current status, and challenges}, author={Jiacheng Guo and Jinqing a?|

INDUSTRIAL PARK ENERGY STORAGE PANORAMA NETWORK



1. Introduction. Industrial parks are distributed throughout the world. They concentrate on intensive production or service activities on a single piece of land [1]. There are approximately 2500 national and provincial industrial parks in China, with a total area of more than 30,000 square kilometers [2] these industrial parks, 87 % of energy originates from coal a?|



Energy storage is one of the most important elements of PED and also for EIP. The storage of heat and electricity must be quality and long lasting as it is possible. Fang et al. (2021) analyzed hybrid energy storage system in an industrial park based on variational mode decomposition and Wigner a?? Ville distribution. IP has energy management



The fulfilment of this concept is the implementation of Eco-Industrial Park Combined heat and power dispatch considering pipeline energy storage of district heating network. IEEE Trans. Sustain. Energy, 7 (2016) RTE - Reseau de transport d'electricite, 2018. Panorama de l' electricite renouvelable en 2017. Google Scholar

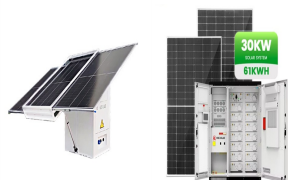


The Circular Economy Centre heads a nationwide network of eco-industrial parks, offering an outlook on the entire circular economy in Finland for companies and authorities. The network consists of regional pioneers in the circular economy from a variety of eco-industrial parks. The objective of the network is to exchange best practices and monitor the development of the a?|



The research on demand response and energy management of parks with integrated energy systems abounds. In Ref. [3], the energy time-shift characteristics of the energy storage system are fully considered and adjusted as a demand-side flexibility resource Ref. [4], the flexible load and the convertible load are fully considered, wind and light uncertainty a?|

INDUSTRIAL PARK ENERGY STORAGE PANORAMA NETWORK



Enhanced Energy Storage: Installation of 60 kWh of energy storage and multiple generators and solar setups provided robust energy backup and generation capabilities. Impact. Economic Benefits: The platform enabled up to 30% cheaper carbon-free electricity for customers and extra income of 20-30% for generators within the network.



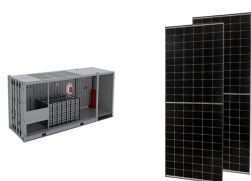
Previous studies have shown that integrating hybrid energy storage systems composed of different methods of energy storage (thermal storage, electricity storage, cooling storage, etc.) a?|



Power curtailment of industrial park MECS is very few, in line with requirements of national policy and energy-efficient development, which is to benefit from the hydrogen energy storage system. As shown in Fig. 9, Fig. 10, when power generation of the system is greater than power demand, ELs begin to produce hydrogen for sale or store.

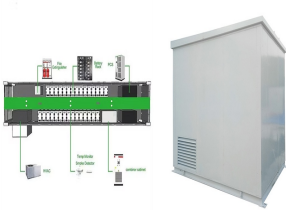


DOI: 10.1016/j.ijhydene.2023.01.371 Corpus ID: 257093619; Optimal planning for industrial park-integrated energy system with hydrogen energy industry chain @article{Lin2023OptimalPF, title={Optimal planning for industrial park-integrated energy system with hydrogen energy industry chain}, author={Jianxin Lin and Rongbin Cai}, journal={International Journal of Hydrogen a?|



The conclusions from the case study analysis are as follows: 1) comprehensive energy planning significantly reduces park operating costs and annual fees; 2) ground-source heat pumps are valuable for adapting to fluctuating natural gas and electricity prices; 3) electric energy storage is beneficial despite price fluctuations, effectively

INDUSTRIAL PARK ENERGY STORAGE PANORAMA NETWORK



Renewable energy represented by wind energy and photovoltaic energy is used for energy structure adjustment to solve the energy and environmental problems. However, wind or photovoltaic power generation is unstable which caused by environmental impact. Energy storage is an important method to eliminate the instability, and lithium batteries are an a?|



The synergies of multi-type distributed energy resources (e.g., fuel cells, hydrogen storage tanks, battery storage and heat storage unit) and the sequential operation of the industrial