

# INSIDE THE BATTERY ENERGY STORAGE POWER STATION



What is a battery energy storage system? A battery energy storage system (BESS) is an electrochemical device that charges (or collects energy) from the grid or a power plant and then discharges that energy at a later time to provide electricity or other grid services when needed.



What is a battery energy storage system (BESS)? A battery energy storage system (BESS) or battery storage power station is a type of energy storage technology that uses a group of batteries to store electrical energy.



What is connection form of collection system of battery energy storage power station? Connection form of collection system of battery energy storage power station The energy storage system is mainly composed of energy storage battery pack, power conversion system (PCS), battery management system (BMS), battery monitoring system (MNS) and other subsystems .



Who uses battery energy storage systems? The most natural users of Battery Energy Storage Systems are electricity companies with wind and solar power plants. In this case, the BESS are typically large: they are either built near major nodes in the transmission grid, or else they are installed directly at power generation plants.



Why should a battery energy storage system be co-located? In doing so, BESS co-location can maximise land use and improve efficiency, share infrastructure expenditure, balance generation intermittency, lower costs, and maximise the national grid and capacity. The battery energy storage system can regulate the frequency in the network by ensuring it is within an appropriate range.

# INSIDE THE BATTERY ENERGY STORAGE POWER STATION



What are the critical components of a battery energy storage system? In more detail, let's look at the critical components of a battery energy storage system (BESS). The battery is a crucial component within the BESS; it stores the energy ready to be dispatched when needed. The battery comprises a fixed number of lithium cells wired in series and parallel within a frame to create a module.



MW Dalian Flow Battery Energy Storage Peak-shaving Power Station, with the largest power and capacity in the world so far, was connected to the grid in Dalian, China, on September 29, and it will be put into operation in mid-October. This energy storage project is supported technically by Prof. LI Xianfeng's group from the Dalian Institute of Chemical Physics (DICP) of ???



A 10-MWh sodium-ion battery storage station was put into operation on May 11 in Nanning, Guangxi in southwestern China, said China Southern Power Grid Energy Storage, the energy storage arm of Chinese grid operator China Southern Power Grid. The energy storage station, built by China Southern Power Grid's Guangxi branch, is the first phase of

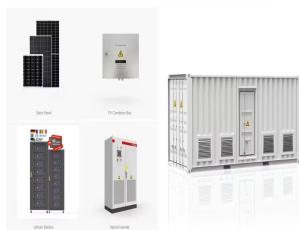


In recent years, electrochemical energy storage has developed quickly and its scale has grown rapidly [3], [4]. Battery energy storage is widely used in power generation, transmission, distribution and utilization of power system [5] recent years, the use of large-scale energy storage power supply to participate in power grid frequency regulation has been widely ???



See It Our Ratings: Portability 3.5/5; Performance 4.5/5; Value 4.8/5  
Product Specs. Power output: 1,500 watts Battery capacity: 983 watt-hours Dimensions: 10.23 inches high by 15.25 inches wide

# INSIDE THE BATTERY ENERGY STORAGE POWER STATION



Battery energy storage systems (BESS) are a key element in the energy transition, with several fields of application and significant benefits for the economy, society, and the environment. Enel Green Power S.p.A. VAT 15844561009



Meet the 1,200 MWh/300 MW Vistra's Moss Landing Energy Storage Facility, which easily beats the nearby Tesla installation (730 MWh/182.5 MW) and the previous largest Hornsdale Power Reserve in



Phase 1 utilises more than 4,500 stacked battery racks, each of which contains 22 individual battery modules. The BESS is housed inside the gas power plants turbine buildings, which have been refurbished to host the new technology. The system takes surplus energy from the grid and helps the network to meet peak demand periods.



This causes smoke to be produced from inside of the battery. Smoke production is the first step in thermal runaway and can become combustible. Fire guts batteries at energy storage system in solar power plant (ajudaily ) [4] Source: Stages of a Lithium Ion Battery Failure ??? Li-ion Tamer (liiontamer ) [5] Source: APS DNVGL Report 7



Old School Waterpower Primes Clean Energy Future Our blueprint to serve customers reliable energy with net zero carbon emissions by 2040, the Clean Energy Plan, is made possible by a 50-year-old hydroelectric plant nestled on the shores of Lake Michigan. The Ludington Pumped Storage Plant, co-owned by Consumers Energy (51%) and DTE Electric (49%), is a key ???

# INSIDE THE BATTERY ENERGY STORAGE POWER STATION



Renewable energy is the fastest-growing energy source in the United States. The amount of renewable energy capacity added to energy systems around the world grew by 50% in 2023, reaching almost 510 gigawatts. In this rapidly evolving landscape, Battery Energy Storage Systems (BESS) have emerged as a pivotal technology, offering a reliable solution for ???



The battery energy storage station (BESS) is the current and typical means of smoothing wind- or solar-power generation fluctuations. Such BESS-based hybrid power systems require a suitable control strategy that can effectively regulate power output levels and battery state of charge (SOC). This paper presents the results of a wind/photovoltaic (PV)/BESS ???



is a problem with the energy supply from the power grid. If the battery energy storage system is configured to power the charging station when the power grid is 99th percentile day in the 5th year of charging minimum battery-buffered DCFC energy storage station operation. capacity in the reference tables in the Appendix. 7 . Battery

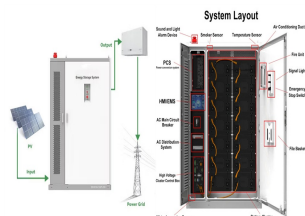


On November 16, Fujian GW-level Ningde Xiapu Energy Storage Power Station (Phase I) of State Grid Times successfully transmitted power. The project is mainly invested by State Grid Integrated Energy and CATL, which is the largest single grid-side standalone station-type electrochemical energy storage power station in China so far.



The LS Power-Diablo Battery Energy Storage System, a 50,000kW energy storage project located in Contra Costa County, California. they say will be a \$650 million network of stations that can

# INSIDE THE BATTERY ENERGY STORAGE POWER STATION



The future of energy storage is here: An inside look at Rocky Mountain Power's 600-battery DR project The 12.6 MWh Utah project uses solar and battery systems as a virtual power plant.



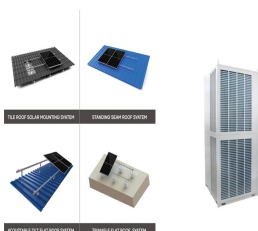
A battery energy storage system (BESS) captures energy from renewable and non-renewable sources and stores it in rechargeable batteries (storage devices) for later use. A battery is a ???



2 The most important component of a battery energy storage system is the battery itself, which stores electricity as potential chemical energy. Although there are several battery technologies in use and development today (such as lead-acid and flow batteries), the majority of large-scale electricity storage systems



The Tesla Megapack is a large-scale rechargeable lithium-ion battery stationary energy storage product, intended for use at battery storage power stations, manufactured by Tesla Energy, the energy subsidiary of Tesla, Inc.. Launched in 2019, a Megapack can store up to 3.9 megawatt-hours (MWh) of electricity. Each Megapack is a container of similar size to an intermodal ???



Discover what a battery energy storage system is and how it functions to store and distribute energy efficiently in this informative blog post. Regulatory Resources. 200 Holt Street, Hackensack, NJ 07601. As Emerging Power continues to innovate in battery storage solutions, the industry will likely see increased deployment of smart grid

# INSIDE THE BATTERY ENERGY STORAGE POWER STATION



These battery energy storage systems usually incorporate large-scale lithium-ion battery installations to store energy for short periods. The systems are brought online during periods of low energy production and/or high demand. Their purpose is to increase the reliability of the grid and reduce the need for other drastic measures (such as rolling blackouts).



Battery storage is a crucial part of the transition to clean energy because of the way it can store power from intermittent sources for use at other times, providing a cleaner and less expensive



There are many different chemistries of batteries used in energy storage systems. Still, for this guide, we will focus on lithium-based systems, the most rapidly growing and widely deployed type representing over 90% of the market. In more detail, let's look at the critical components of a battery energy storage system (BESS). Battery System



On July 9 at 7:35 p.m., California's power grid hit an all-time peak for battery storage. But that record is just one of many. All-time peaks???like the 2,519 megawatts on that evening???are



This represents a pivotal stride towards the widespread adoption of new energy storage technologies. The 10-MWh sodium-ion battery energy storage station showcases impressive capabilities, utilizing 210 Ah sodium-ion battery cells capable of charging up to 90 percent in just 12 minutes, as disclosed in a company statement.

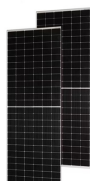


# INSIDE THE BATTERY ENERGY STORAGE POWER STATION

TAX FREE



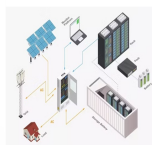
This article is the second in a two-part series on BESS ??? Battery energy Storage Systems. Part 1 dealt with the historical origins of battery energy storage in industry use, the technology and system principles behind modern BESS, the applications and use cases for such systems in industry, and presented some important factors to consider at the FEED stage of ???



The state utility says the 10 MWh sodium-ion battery energy storage station uses 210 Ah sodium-ion battery cells that charge to 90% in a mindblowing 12 minutes. The system comprises 22,000 cells.



OverviewConstructionSafetyOperating characteristicsMarket development and deploymentSee also



Battery storage is transforming the global electric grid and is an increasingly important element of the world's transition to sustainable energy. Tesla can deploy an emissions-free 250 MW, 1 GWh power plant in less than three months on a three-acre footprint ??? four times faster than a traditional fossil fuel power plant of that size



In the energy industry, BESS are used for a variety of purposes such as balancing the supply and demand of energy in the grid, providing ancillary services, and enabling the integration of renewable energy sources. Battery storage systems come in completely different scales - from fridge-sized residential battery storage systems to so-called

# INSIDE THE BATTERY ENERGY STORAGE POWER STATION

---



Discover what BESS are, how they work, the different types, the advantages of battery energy storage, and their role in the energy transition. Battery energy storage systems (BESS) are a ???