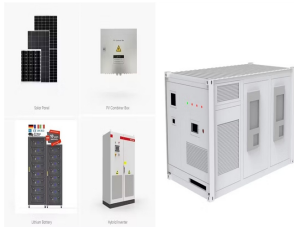
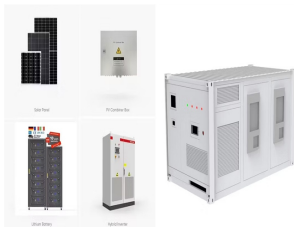


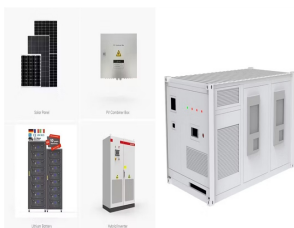
INTEGRATED EQUIPMENT MECHANICAL ENERGY STORAGE



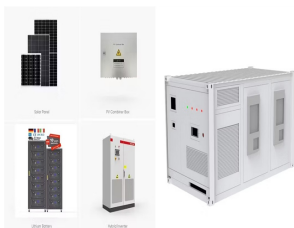
What is a multi-storage integrated energy system? To address the insufficient flexibility of multi-energy coupling in the integrated energy system and the overall strategic demand of low-carbon development, a multi-storage integrated energy system architecture that includes electric storage, heat storage and hydrogen storage is established.



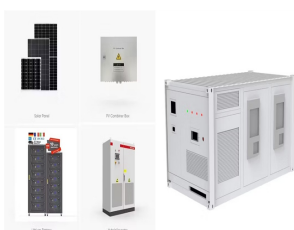
What is a generation-integrated energy storage system?
Generation-integrated energy storage (GIES) systems store energy before electricity is generated. Load-integrated energy storage (LIES) systems store energy (or some energy-based service) after electricity has been consumed (e.g., power-to-gas, with hydrogen stored prior to consumption for transport or another end-use).



What is a load-integrated energy storage system? Load-integrated energy storage (LIES) systems store energy (or some energy-based service) after electricity has been consumed (e.g., power-to-gas, with hydrogen stored prior to consumption for transport or another end-use). GIES systems have received little attention to date but could have a very important role in the future .

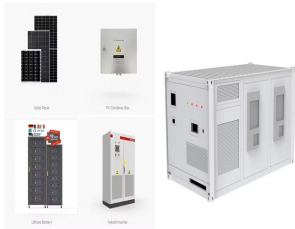


What are energy storage systems? Energy storage systems (ESSs) can provide the flexibility that is needed for a robust high quality stable electrical system when technically integrated into the grid network. The following are some of the features of energy storage:

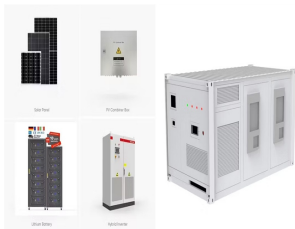


What is a mechanical energy storage system? Mechanical energy storage systems such as PHS, CAES and GES can be used to compensate for unexpected contingencies for example the failure of a generating unit. In this application premium is placed on mechanical energy storage being able to charge or discharge within a very short interval of time (in milliseconds of time).

INTEGRATED EQUIPMENT MECHANICAL ENERGY STORAGE



Can mechanical energy storage systems be used as a solution?
Hence, mechanical energy storage systems can be deployed as a solution to this problem by ensuring that electrical energy is stored during times of high generation and supplied in time of high demand. This work presents a thorough study of mechanical energy storage systems.



As renewable energy production is intermittent, its application creates uncertainty in the level of supply. As a result, integrating an energy storage system (ESS) into renewable energy systems could be an effective ???



Besides, safety and cost should also be considered in the practical application. 1-4 A flexible and lightweight energy storage system is robust under geometry deformation without compromising its performance. As usual, the mechanical ???



The target market of VRB energy storage system produced by Shanghai Electric is mainly in the fields of renewable energy power generation, distributed and smart micro-grid, frequency modulation and peak load ???



As a mechanical energy storage system, CAES has demonstrated its clear potential amongst all energy storage systems in terms of clean storage medium, high lifetime scalability, low self-discharge

INTEGRATED EQUIPMENT MECHANICAL ENERGY STORAGE



Among them, the compressed air energy storage (CAES) system is considered a promising energy storage technology due to its ability to store large amounts of electric energy and small ???



Addressing the urgent issue of reducing industrial carbon emissions, this study presents an integrated industrial energy supply system (IRE-CCUS-BESS-SPS) that incorporates renewable energy; calcium-based ???



Energy storage should be integrated into a comprehensive strategy for advancing renewable energy. It may be effectively incorporated into intermittent sources like solar and ???



How Flywheel Energy Storage Systems Work. Flywheel energy storage systems (FESS) employ kinetic energy stored in a rotating mass with very low frictional losses. Electric energy input accelerates the mass to speed via an integrated ???



The predominant concern in contemporary daily life revolves around energy production and optimizing its utilization. Energy storage systems have emerged as the paramount solution for harnessing produced energies ???

INTEGRATED EQUIPMENT MECHANICAL ENERGY STORAGE



Energy storage flywheel systems are mechanical devices that typically utilize an electrical machine (motor/generator unit) to convert electrical energy in mechanical energy and vice versa. Energy is stored in a fast-rotating mass ???