

IS IT OKAY TO INSTALL PHOTOVOLTAIC PANELS ON TEA TREES



Do trees & solar panels get along? Unfortunately for some homeowners, trees and solar panels don't get along. Trees can block sunlight from hitting your solar panels, which can substantially reduce their performance and energy production. Here's the good news: you don't need to clear-cut your property to start using solar panels.



Can solar panels be installed on a property surrounded by trees? Ultimately, solar panel installation companies have worked with all types of properties including properties surrounded by trees. They know how to maximize the efficiency of your solar panels. They'll be able to determine if you should cut down trees, trim trees, or just leave them there.



Can a solar panel remove a tree? That means when you remove one tree from your property and replace it with one solar panel, your net negative impact on the environment is 10.5 metric tons of CO₂ emissions. In other words, for the removal of one tree to make sense (environmentally speaking), the net CO₂ reduction from that solar panel must exceed 10.5 metric tons.

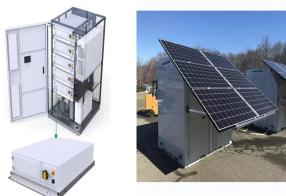


Do Solar trees save ground space? Solar trees save ground space compared to traditional solar panels, as they are naturally quite small and thin. As a result, solar trees require less land than solar panel installations, especially considering their ability to optimise sun exposure through the placement of photovoltaic cells.

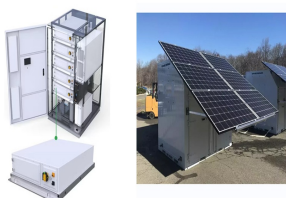


Is removing trees to create solar energy a bad tradeoff? Some people believe that removing trees to create solar energy is a bad tradeoff for the environment. They believe it creates a net negative impact. After all, trees remove carbon dioxide from the environment by storing CO₂, and we emit CO₂ when manufacturing solar panels.

IS IT OKAY TO INSTALL PHOTOVOLTAIC PANELS ON TEA TREES



How much does a solar tree cost? A 1.8kW solar tree costs, on average, around \$40,000 (?31,259.40), while a larger 5.4kW system can reach costs of around \$80,000 (?62,518.80). Commercial-grade solar trees can cost around \$100,000 (?78,148.50). You???ll notice these prices are considerably higher than solar panels. The average 3.5kW solar panel system will cost around ?7,000.



Photovoltaic (PV) Cell Functionality: PV cells in solar panels can absorb photons to create electricity, even in low-light or shaded conditions.; Efficiency in Various Light Conditions: . Direct Sunlight: Offers optimal performance for solar panels.; Indirect Sunlight: Panels can still produce a significant portion of their potential output.; Shade: Panels generate less electricity, but



Shading, if not considered, can be a solar panel system's worse nightmare. According to some experts, homeowners could be losing as much as 40 per cent of their potential solar generation due to shade. This is because, as a shadow is cast over a panel, the amount of sunlight reaching the surface is reduced.



Additionally, considering tree growth patterns and selecting appropriate panel locations during installation can help optimize solar energy production in tree-rich environments. Conclusion: In the end, the influence of trees can be both ???



If you don't know how to install solar panels on roof that is steep, it's a good idea to call a professional installation company that specialized in solar panel installation. However, you can also mount yours on the ground on a frame in a well-lit spot near your house.

IS IT OKAY TO INSTALL PHOTOVOLTAIC PANELS ON TEA TREES



The PV panels on solar trees for the garden convert sunlight directly into electricity through the photovoltaic effect. These panels are often monocrystalline and known for their high efficiency, sometimes up to 24%. Moreover, some solar power trees are equipped with automatic sun-tracking systems that adjust the position of the panels throughout the day to ???



No, removing a tree does not negate the environmental benefits of solar energy. Solar panels have a very small carbon footprint, and even if you remove a tree to install them, the solar panels will still offset far more carbon emissions than the tree would have over its lifetime.. Additionally, it's important to remember that solar panels only need direct sunlight for a few hours a day to



Solar panels are great solution for harnessing clean, renewable energy and reducing electricity bills. However, despite their cost-saving benefits there is one thing that solar panel installers don't often mention: the unintended invitation they extend to birds, particularly wild pigeons. Pigeons are drawn to solar panel installations in search for warm and shelter. ???



The installation of a photovoltaic system with horizontally ???xed panels requires a signi???cant unshaded area,whichhas becomeincreasinglyscarce,especiallyinurbancenters.Thephotovoltaicsolart reeisa strategyused to increase the ef???ciency of photovoltaicsystems by reducingthe occupied area andoptimizingthe



Find and Compare Solar Energy near TEA TREE GULLY, SA. Get Reviews, Location and Contact details. Home; Solar Energy Near Me; Tea Tree Gully SA. Get free quotes. Have a go at viewing our listings to install solar panels for your home. View More. Suntrix. Solar Energy, Newton, SA 5074. More info. Closed. 95 Graves St, Newton, SA, 5074 | 7

IS IT OKAY TO INSTALL PHOTOVOLTAIC PANELS ON TEA TREES



Trees provide numerous environmental benefits, including shade, wildlife habitats, and improved air quality. It is advisable to explore alternative options first, such as tree trimming and strategic solar panel ???

Commercial and Industrial ESS

- Budget-Friendly Solution
- Renewable Energy Integration
- Reduced Energy Storage Expenses



There are a large number of formally approved solar panel installations in conservation areas, including on roofs that face the road. If your solar panel installation involves work on a shared or party wall, you may need to comply with the Party Wall Act. Why are Solar Panels Good for the Env Solar panels are the leading source of



Trees can affect the efficiency of solar panels in several ways, and solar panel installers need to understand how best to optimise energy generation when trees are present. Trees can cast a shadow on panels, blocking the sun's rays and ???



There are good reasons why PV panels are not the enemy of forests. For example, I asked Perplexity to list the fractions of land use for Italy. It would make no sense to cut trees to install PV panels simply because there is no need. But I would go more in depth into this issue. While it is true that PV panels are not enemies of the trees,



Finding an unshaded spot is best, but sometimes shading is unavoidable. Some solar panel systems can minimise the impact of shading using "optimisers". Solar optimisers help improve the overall performance of your solar panel system. So, if one panel is shaded, it doesn't impact how much electricity the other panels can generate.

IS IT OKAY TO INSTALL PHOTOVOLTAIC PANELS ON TEA TREES



Solar PV panels have long been a popular renewable technology among self-builders and renovators. Thanks to a mixture of government incentives and falling technology prices, demand for solar photovoltaics (PV) has boomed over the last decade. The once-generous Feed-In Tariffs (FITs) have now been dropped (the replacement Smart Export Guarantee is far ???



Southwest or southeast-facing are also good, though you may get slightly less power. Also consider: our guide to solar panel installation. 4. There isn't enough sun for solar panels. Check that any nearby trees or neighbouring buildings don't cast shadows onto your roof, and aren't likely to in the future.



Finding an unshaded spot is best, but sometimes shading is unavoidable. Some solar panel systems can minimise the impact of shading using "optimisers". Solar optimisers help improve the overall performance of your solar panel system. So, if one panel is shaded, it doesn't impact how much electricity the other panels can generate.



During the installation process, the photovoltaic panels are mounted on the roof or on a ground-mounted system, and the wiring and electrical components are installed. to work with an expert who is familiar with the local regulations ???



Installing solar panels on a house with numerous trees around can affect the effectiveness of the solar system. Trees can cast shadows on the solar panels, significantly reducing their energy production. Shade on even a small portion of a solar panel can lead to a disproportionate drop in power output. To maximize sola

IS IT OKAY TO INSTALL PHOTOVOLTAIC PANELS ON TEA TREES



As the number of residential solar panel installations increase there is going to be a greater problem from over shadowing or shading from trees and other obstacles. Trees in particular will cause a problem as even partial shading on some solar arrays can significantly reduce their ability to generate electricity.



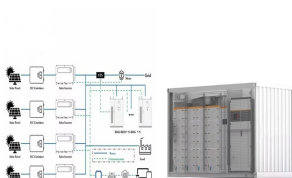
The main advantage of a photovoltaic solar tree, when compared to photovoltaic systems with single orientation panels, is the possibility of optimizing the orientation of each solar panel. This characteristic may allow the energy generation to be optimized in desired periods.



??? Solar panel installation is much easier if you have a useable loft space It's much easier to get rooftop solar panels installed if you have a loft space. This way, installers can look at the underside of your roof beforehand ???



Installing solar panels on a house with numerous trees around can affect the effectiveness of the solar system. Trees can cast shadows on the solar panels, significantly reducing their energy production. Shade on even a ???



Trees Affect on Solar Panels. Installing a solar panel system is a great way to reduce your reliance on the National Grid and save money on electricity. The energy generated from solar panels can also be stored in solar batteries for use after dark, meaning you can reap the benefits long after the sun has set.

IS IT OKAY TO INSTALL PHOTOVOLTAIC PANELS ON TEA TREES



Removing trees for solar panels brings its own environmental considerations, and there are key factors to keep in mind when installing solar panels in shaded areas. Modern solar technology's resilience to shade, the seasonal changes of ???



Another interesting thing was the panels that were damaged were the newest ones: the old, original panels were fine, & still are working. 2 Phase setup, on a shed, so one system changed, & other upgraded with new ???



The first step in the solar panel installation guide is to install the mounts that will support the solar panels. These come in three primary types: pole, roof-ground, and flush mounts . Depending on the chosen mount, you ???



Sunlight exposure should be good for a minimum of five to six hours every day throughout the year. Use a toolkit for solar energy or smartphone application to determine shade patterns over time. Shading by neighbouring ???



Cutting down trees is not always necessary. Many homeowners can optimise solar panel efficiency by just trimming a few branches. However, in some cases, tree removal might be necessary for optimal solar panel performance .

IS IT OKAY TO INSTALL PHOTOVOLTAIC PANELS ON TEA TREES



The vision of a tree-shaped solar installation can be really good to the eyes as well. Solar panel trees can aid as an amazing option for assets where solar roofing doesn't seem possible. They are also accessible with involuntary sun tracking and in-built vacuuming machines. They are mostly utilized as a source to instruct and to make people



Here is a list of Tea Tree Gully's best Solar Panel Experts as rated by other customers. Get up to 3 free quotes for Tea Tree Gully Solar Panel Experts! service and repairs. I also supply and install solar panel systems including stand alone or self use battery systems. Read more; Kenny & Sun. Golden Grove, Andre understands good old



Photovoltaic panels have transformed how we connect solar energy, providing a clean and maintainable energy source. As potential photovoltaic panel owners consider their financial investment, a burning concern frequently arises: Can Solar Panels Be Installed in the Rain? This blog post will discuss whether solar panels can be installed in the Rain.



As a result, solar trees require less land than solar panel installations, especially considering their ability to optimise sun exposure through the placement of photovoltaic cells. This makes solar trees valuable in cities ???



Both the position and height of trees around your solar panels have direct impacts on how shaded ??? and thus less efficient ??? your solar panel system is. For example, trees on the east or west side of your solar system ???