

IS IT OKAY TO INSTALL PHOTOVOLTAIC PANELS ON THE VACANT LAND OF THE FARM



Can solar farms be built on flat land? As with most wind power projects, developers only place solar farms on land that meets certain conditions. The land should be sturdy for solar projects and not fall foul to sinking from soft soil. But it's also essential to consider the landscape for a site, as solar projects are particularly reliant on flat land without steep slopes.



Do you need planning permission for a solar farm? Ground mounted systems measuring over 9m sq. (approximately 4-5 solar panels) require planning permission and as solar farms are typically built on rural land, they are subject to rigorous planning procedures before you can start harnessing solar power.



Can solar panels be installed on agricultural buildings? Installing solar panels on the roofs of agricultural buildings is a great way to produce green energy for your farm while cutting costs, providing a reliable energy source, and reducing your carbon footprint. Farming buildings are typically large enough to accommodate a large number of solar panels.



Can a farm be used as a solar farm? Agricultural land can be easily converted into a solar farm, collecting energy from the sun which can be used to power the farm and its operations. Part of the land can be used for this purpose. You may need special permission if the land is protected, listed, or part of a world heritage site.



Are rooftop solar panels a good option for a farm? Rooftop solar panels can be a good option for a farm, as they utilize space that would otherwise be wasted to create energy, allowing you to use the agricultural land for agriculture. Farming buildings are typically large enough to accommodate a large number of solar panels.

IS IT OKAY TO INSTALL PHOTOVOLTAIC PANELS ON THE VACANT LAND OF THE FARM



How to choose the right land for your solar installation? Finally, there are some practical considerations when it comes to the features of your land. Here they are: Flat land is preferred, especially for solar. For solar installations, the land should ideally be either flat or on a gentle south-facing slope.



I have some land and I can see electric poles on the street/road (not on land). Install electrical service on vacant land. Thread starter packersbay; Start date Apr 26, 2021; 1; 2; 3; Next. 1 of 3 Go to page The reason I say county first is some counties limit what size service you can install without an actual building. Here farm



Each solar panel takes up a significant amount of space and yields potential environmental impacts. These panels absorb the light used to produce some of our renewable energy and transfer this absorbed sun power to their sister equipment on these sites. many areas are working on rewriting zoning laws to allow the development of solar farm



The uncertain climate of subsidies for farmers giving over their land to solar farming, has led to fast installation in order to secure the funding first, the fields later. In many cases, the installations have been carried out before adequate security has been installed, rather than the other way around, leaving fields of valuable solar panels vulnerable.



If you're expanding your horizons as a landowner, you may wonder whether your property meets typical solar farm land requirements. As the average income for a project sits between \$800 ??? \$1200 per annum per acre, solar projects are becoming seriously popular. You may think decent acreage and excellent sunlight levels would be enough. However, finding ???

IS IT OKAY TO INSTALL PHOTOVOLTAIC PANELS ON THE VACANT LAND OF THE FARM



A large house with an unshaded south-facing roof of around 30m² could install 4kW of PV panels. Located in, say, Co Carlow and set at the optimum angle to the sun (35°), it would generate around 3,300kWh of electricity (roughly equivalent to the amount of electricity consumed by a small household) throughout the year.



JTC To Increase Solar Energy Capacity From 12.3 MWp To ??? JTC will double the potential of Jurong Island to harness solar energy by launching a tender to install solar panels on 60ha of temporary vacant ground and additional rooftops at the oil hub. This will help overcome the limited land available for large solar farms in Singapore.



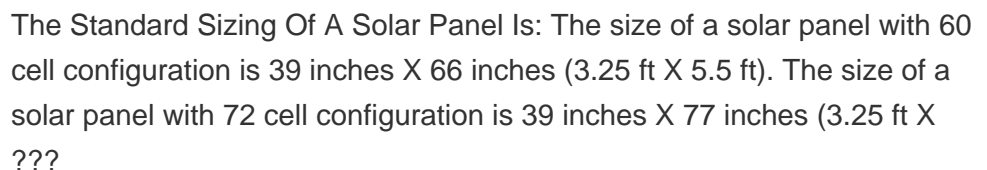
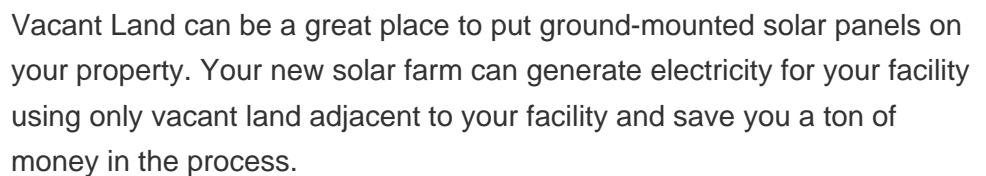
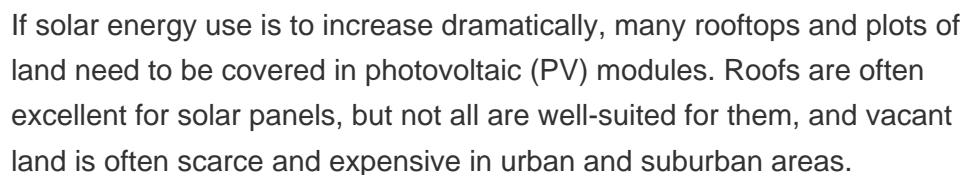
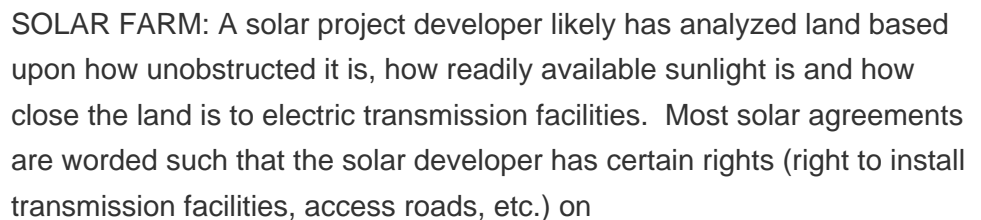
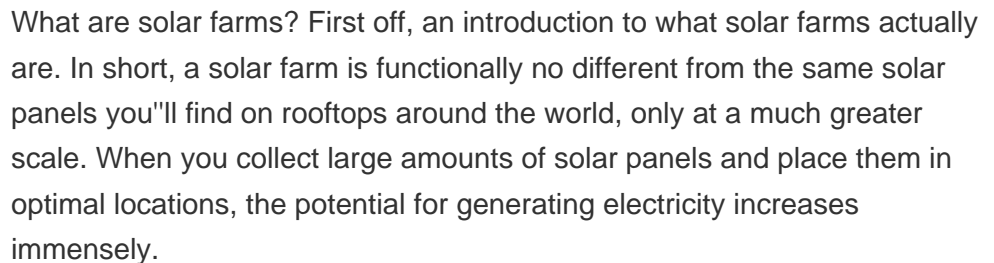
An East Ayrshire farm has been given the go ahead to install 1,000 solar panel modules on land which was home to the area's first ironworks in the 1700s.. Alan Blackwood, of Auldhouseburn Farm



Choosing a plot of land for a photovoltaic farm - that is, what to check before we start planning Our photovoltaic investment. What is necessary to make the right decision regarding the choice of location where we will install our photovoltaic farm. Undoubtedly, this is one of the key steps on the road to success in the renewable energy



How to start a solar farm on your vacant land The Energy International Association (EIA) has projected a 15% growth for renewable energy installations for the year 2020. EIA forecasts that there will be 19.3 gigawatts of (USA) utility scale solar installations for 2019-2020 alone which represents a 65% increase from 2018 installed capacity.



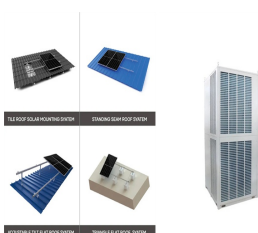
IS IT OKAY TO INSTALL PHOTOVOLTAIC PANELS ON THE VACANT LAND OF THE FARM



The decision to transfer land use from agricultural production to solar panel electrical production (solar farms) should be made by careful examination of immediate and long-term potential risks and benefits. Currently, the transition seems a logical and profitable venture since payments made by contractors are much greater than revenue received from farmland rental. However, ???



The solar PV system installation must be carried out by a licenced electrician experienced in the specific work. While installing the solar panels: ??? use the identified control measures for eliminating or minimising the risk of falls from heights, and other hazards like asbestos ??? follow the safe work procedures for installing the solar



The profitability of a solar panel installation business hinges on the number of panels installed. For businesses that lease solar panels, the typical annual return is around 6%, necessitating a long-term investment approach from the ???



Leasing land for solar energy projects involves a contract between a landowner and a solar company that allows the solar company to install and operate a solar energy system on their property in exchange for lease payments. This arrangement has gained popularity due to the increasing demand for clean energy and the potential for landowners to generate ???



This is a subtitle for your new post Vacant Land can be a great place to put ground-mounted solar panels on your property. Your new solar farm can generate electricity for your facility using only vacant land adjacent to your facility and save you a ton of money in the process. Two qualifying questions you [???

IS IT OKAY TO INSTALL PHOTOVOLTAIC PANELS ON THE VACANT LAND OF THE FARM



Once you have bought your solar PV panels, the maintenance and operating costs are small. The panels and inverters will require cleaning approximately every 10 years. Panel output should be expected to fall at a rate of 1% per year. The financial return is mainly tied up with the value and amount of energy generated.



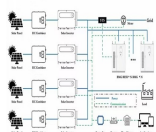
Landowners considering granting a solar panel lease of their land should engage with their accountants and tax advisers to consider the tax implications. Letting the land for solar PV will mean that it is no longer used for ???

Commercial and Industrial ESS

Air Cooling / Liquid Cooling
 • Single-Phase Inverter
 • Removable Energy Storage
 • Modular Design for Flexible Expansion



They should then suggested the size and type of solar panel system suitable for the farm's needs.??? Get to work: Take those recommendations and make them happen! That might mean upgrading equipment, improving insulation or adjusting operational practices, before or alongside the solar panel installation.



Site Preparation and Infrastructure Installation . The construction team will clear the land of any obstructions and prepare it for the installation of solar panels and any other associated infrastructure. This includes installing the foundations, mounting structures, inverters, transformers, and electrical wiring.



There is significant opportunity to produce large amounts of solar energy on farmland. Agricultural land in the U.S. has the technical potential to provide 27 terawatts of solar energy capacity. This is a quarter of the total U.S. solar energy capacity of 115 TW. Only 0.3% of farmland is expected to be used for solar energy by 2035.

IS IT OKAY TO INSTALL PHOTOVOLTAIC PANELS ON THE VACANT LAND OF THE FARM



As the UK battles with the effects of climate change, solar panels have become a viable mainstream solution to the fossil fuel crisis. In 2019, roughly 39% of electricity in the UK was produced using fossil fuels, and 40% of the UK's energy came from renewables, compared to 10 years ago when fossil fuels accounted for 80% of the UK's energy production.



The prohibitive cost of parking lot solar panels makes large expanses, meaning acres, of land more appealing to companies, as the solar energy business is still about profits. It is an unfortunate situation that this land may sometimes be forest and the trees must be cut down to clear space for solar panels. There is certainly more than one



The project involves the installation of Photovoltaic (PV) solar panels on the roof of the building, which will have an energy generation capacity of 50kW. The proposed works include: the erection of scaffolding, installation of mounting structures, PV panels, inverters and cabling. Duration of Works The expected duration is 1 ??? 2 weeks.



When you install solar on your land, you are playing a key role in helping to reduce your community's dependence on fossil fuels which contributes directly towards combating climate change. Solar energy can ???



If the land disruption associated with building a solar panel farm is expected to exceed 1 acre in size, NPDES permit coverage is required. For solar panel farms that disturb more than one acre, a stormwater management permit may be required. This permit ensures proper erosion and sediment control during construction activities.