

# IS THE BIGGER THE ENERGY STORAGE MOTOR THE BETTER



Why do electric motors need more energy management strategies? Since the electric motor functions as the propulsion motor or generator, it is possible to achieve greater flexibility and performance of the system. It needs more advanced energy management strategies to enhance the energy efficiency of the system.



Why is energy storage important in electrical power engineering? Various application domains are considered. Energy storage is one of the hot points of research in electrical power engineering as it is essential in power systems. It can improve power system stability, shorten energy generation environmental influence, enhance system efficiency, and also raise renewable energy source penetrations.



What are the most popular energy storage systems? This paper presents a comprehensive review of the most popular energy storage systems including electrical energy storage systems, electrochemical energy storage systems, mechanical energy storage systems, thermal energy storage systems, and chemical energy storage systems.



Which energy storage systems are suitable for electric mobility? A number of scholarly articles of superior quality have been published recently, addressing various energy storage systems for electric mobility including lithium-ion battery, FC, flywheel, lithium-sulfur battery, compressed air storage, hybridization of battery with SCs and FC ,,,,,,,.



Which type of energy storage system is suitable for long-term use? Sahri et al. suggested that hybrid energy system consisting of fuel-cell with capacitor is a common choice to handle load fluctuations and voltage variances . Intended for extended use, FC and UC, FC and UHSF, and CAES and UC hybrids energy storage systems are available .

# IS THE BIGGER THE ENERGY STORAGE MOTOR THE BETTER



What is the difference between power and efficiency? Power: How quickly the stored energy discharged and charged is determined based on the power. Efficiency: It expresses the amount of energy lost during the storage period and during the charging/discharging cycle, as it is the ratio between the energy provided to the consumer to the energy required for charging.



The rest of this article is organized into the sections below: Introduction, Configuration of HEV, Electrical motors in EV and HEV, Energy storage systems, Charge equalization of the supercapacitor, and Energy a?|



Conventionally used carbon and metal oxide-based electrodes offer better electrical conductivity but lower energy storage capacity; typically, materials with low electrical a?|



Mohammad Imani-Nejad PhD "13 of the Laboratory for Manufacturing and Productivity (left) and David L. Trumper of mechanical engineering are building compact, durable motors that can operate at high speeds, making devices a?|



i 1/4 ? 2022a??a??,2022,a??a??a??a?? a?|

# IS THE BIGGER THE ENERGY STORAGE MOTOR THE BETTER

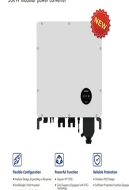


Smaller motors tend to be more efficient for city commutes, as they require less energy. In contrast, larger motors might drain the battery faster but are better for challenging terrain or heavy loads. Debunking Common E-Bike a?|



This article's main goal is to enliven: (i) progresses in technology of electric vehicles" powertrains, (ii) energy storage systems (ESSs) for electric mobility, (iii) electrochemical a?|

200W modular power converter



INTEGRATED DESIGN  
EASY TO TRANSPORT AND INSTALL,  
FLEXIBLE DEPLOYMENT



The energy system design is very critical to the performance of the electric vehicle. The first step in the energy storage design is the selection of the appropriate energy storage resources. This a?|



In this study, a flywheel energy storage system (FESS) has been designed for smart grid applications. The requirements of the flywheel and electrical machine, which are the most important parts of



Energy storage captures energy when it is produced and stores it for later use through a variety of technologies including, but not limited to, pumped hydro, batteries, compressed air, hydrogen storage and thermal storage. Where a?|

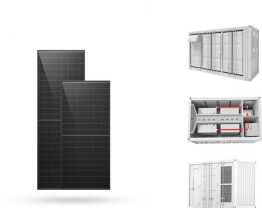
# IS THE BIGGER THE ENERGY STORAGE MOTOR THE BETTER



This article delivers a comprehensive overview of electric vehicle architectures, energy storage systems, and motor traction power. Subsequently, it emphasizes different charge equalization methodologies of the energy storage a?|



BEVs are driven by the electric motor that gets power from the energy storage device. The driving range of BEVs depends directly on the capacity of the energy storage a?|



Welcome to the realm of mechanical energy storage, where the ingenuity of engineering meets the dynamic needs of energy management. In this innovative domain, the focus is on storing a?|