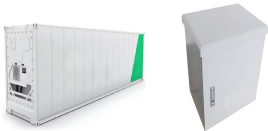


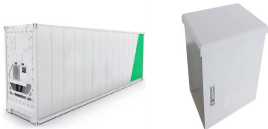
IS THE ENERGY STORAGE BATTERY CHARGED



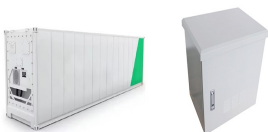
What is a battery energy storage system? A battery energy storage system (BESS) is an electrochemical device that charges (or collects energy) from the grid or a power plant and then discharges that energy at a later time to provide electricity or other grid services when needed.



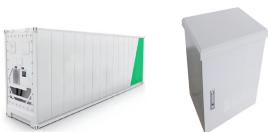
How do batteries store energy? Batteries and similar devices accept, store, and release electricity on demand. Batteries use chemistry, in the form of chemical potential, to store energy, just like many other everyday energy sources. For example, logs and oxygen both store energy in their chemical bonds until burning converts some of that chemical energy to heat.



How does a battery storage system work? A battery storage system can be charged by electricity generated from renewable energy, like wind and solar power. Intelligent battery software uses algorithms to coordinate energy production and computerised control systems are used to decide when to store energy or to release it to the grid.



What type of batteries store electrical energy? These are the most common batteries, the ones with the familiar cylindrical shape. There are no batteries that actually store electrical energy; all batteries store energy in some other form.

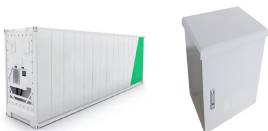


How does the state of charge affect a battery? The state of charge influences a battery's ability to provide energy or ancillary services to the grid at any given time. Round-trip efficiency, measured as a percentage, is a ratio of the energy charged to the battery to the energy discharged from the battery.

IS THE ENERGY STORAGE BATTERY CHARGED



What is a battery and how does it work? A battery for the purposes of this explanation will be a device that can store energy in a chemical form and convert that stored chemical energy into electrical energy when needed. These are the most common batteries, the ones with the familiar cylindrical shape.



Home Energy Storage and EV Charger. Combine the DURACELL Energy 5+ Battery and EV Charger to maximise your energy cost savings. Store solar or lowest cost grid energy to power both your home and your car. Take a step towards greater energy independence with DURACELL Energy. [Learn More.](#)



Grid-level large-scale electrical energy storage (GLEES) is an essential approach for balancing the supply???demand of electricity generation, distribution, and usage. Compared with conventional energy storage methods, battery technologies are desirable energy storage devices for GLEES due to their easy modularization, rapid response, flexible installation, and short ???



A battery energy storage system (BESS) captures energy from renewable and non-renewable sources and stores it in rechargeable batteries (storage devices) for later use. A battery is a ???



1.7 Schematic of a Battery Energy Storage System 7 1.8 Schematic of a Utility-Scale Energy Storage System 8 1.9 Grid Connections of Utility-Scale Battery Energy Storage Systems 9 2.1ackable Value Streams for Battery Energy Storage System Projects S 17 2.2 ADB Economic Analysis Framework 18 2.3 Expected Drop in Lithium-Ion Cell Prices over the

IS THE ENERGY STORAGE BATTERY CHARGED



170+ Countries SUNGROW focuses on integrated energy storage system solutions, including PCS, lithium-ion batteries and energy management system. These "turnkey" ESS solutions can be designed to meet the demanding requirements for residential, C& I and utility-side applications alike, committed to making the power interconnected reliably.



Energy density is measured in watt-hours per kilogram (Wh/kg) and is the amount of energy the battery can store with respect to its mass. Power density is measured in watts per kilogram (W/kg) and is the amount of power that can be generated by the battery with respect to its mass. To draw a clearer picture, think of draining a pool.



What makes this battery different is that it stores energy in a unique liquid chemical formula that combines charged iron with a neutral-pH phosphate-based liquid electrolyte, or energy carrier.



And during this year's solar eclipse, batteries charged on excess renewable energy carried California's power sector through the temporary slump in solar PV generation. If battery energy storage is to continue living up to its promise of enabling a net-zero grid, it's more important than ever that state policies and battery control



Battery energy storage enables the storage of electrical energy generated at one time to be used at a later time. This simple yet transformative capability is increasingly significant. The need for innovative energy storage becomes vitally important as we move from fossil fuels to renewable energy sources such as wind and solar, which are

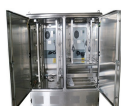
IS THE ENERGY STORAGE BATTERY CHARGED



Tehachapi Energy Storage Project, Tehachapi, California. A battery energy storage system (BESS) or battery storage power station is a type of energy storage technology that uses a group of batteries to store electrical energy. Battery storage is the fastest responding dispatchable source of power on electric grids, and it is used to stabilise those grids, as battery storage can ???



A battery storage system can be charged by electricity generated from renewable energy, like wind and solar power. Intelligent battery software uses algorithms to coordinate energy production and computerised control systems are used to decide when to store energy or to release it to the grid.



Battery energy storage is reviewed from a variety of aspects such as specifications, advantages, limitations, and environmental concerns; however, the principal focus of this review is the environmental impacts of batteries on people and the planet. Batteries are the most common and efficient storage method for all small-scale power needs, and



Energy storage can charge electric vehicles in an hour or less; Helps manage demand charges by drawing from storage during peak times ??? can lead to a 70%+ cost reduction The Kilows team has decades of experience in energy generation, battery technology, energy storage and customer success to deliver on our vision. GreenCore.



So by default, any electricity your solar panels generate will be used to power your home, and then used to charge your storage battery. Any unused electricity is exported back to the grid when your battery is full, or when you schedule it to (which you may want to do, as some energy companies will pay you more for exporting electricity at peak

IS THE ENERGY STORAGE BATTERY CHARGED



The battery energy storage system's (BESS) essential function is to capture the energy from different sources and store it in rechargeable batteries for later use. Often combined with renewable energy sources to accumulate the renewable energy during an off-peak time and then use the energy when needed at peak time. This helps to reduce costs and establish benefits ???



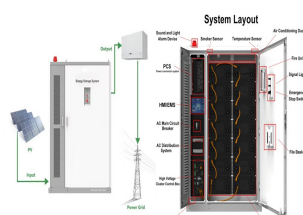
Battery energy storage systems (BESSs) provide significant potential to maximize the energy efficiency of a distribution network and the benefits of different stakeholders. This can be achieved through optimizing placement, sizing, charge/discharge scheduling, and control, all of which contribute to enhancing the overall performance of the



With the gradual transformation of energy industries around the world, the trend of industrial reform led by clean energy has become increasingly apparent. As a critical link in the new energy industry chain, lithium-ion (Li-ion) battery energy storage system plays an irreplaceable role. Accurate estimation of Li-ion battery states, especially state of charge ???



This review highlights the significance of battery management systems (BMSs) in EVs and renewable energy storage systems, with detailed insights into voltage and current monitoring, charge-discharge estimation, protection and cell balancing, thermal regulation, and battery data handling.



*Prices reflect the federal tax credit but don't include solar panels, which you'll need to keep your battery charged during an outage. The difference between whole-home and partial-home battery backup systems is pretty self-explanatory: Whole-home battery backup systems can power your entire home in the event of an outage, whereas partial-home setups ???

IS THE ENERGY STORAGE BATTERY CHARGED



Powerwall is a compact home battery that stores energy generated by solar or from the grid. You can use this energy to power the devices and appliances in your home day and night, during outages or when you want to go off-grid. You can optimize your stored energy to charge your electric vehicle with clean energy during the day, at night or



Powerwall gives you the ability to store energy for later use and works with solar to provide key energy security and financial benefits. Each Powerwall system is equipped with energy monitoring, metering and smart controls for owner customization using the Tesla app. The system learns and adapts to your energy use over time and receives over-the-air updates to add new ???



Work has been completed on the largest battery energy storage system (BESS) to have been paired with solar PV to date, with utility Florida Power & Light (FPL) holding a ceremony earlier this week. Construction on the Manatee Energy Storage Center in Florida's Manatee County was completed in just 10 months, having begun in February this year.



In this study, an innovative dual-photoelectrode vanadium???iron energy storage battery (Titanium dioxide (TiO_2) or Bismuth vanadate (BiVO_4) as photoanodes, polythiophene (pTTh) as photocathode, and $\text{VO}^{2+}/\text{Fe}^{3+}$ as redox couples.) is proposed, which can autonomously charge under sunlight. The dual-photoelectrode structure enables the



Unlike traditional power plants, renewable energy from solar panels or wind turbines needs storage solutions, such as BESSs to become reliable energy sources and provide power on demand [1]. The lithium-ion battery, which is used as a promising component of BESS [2] that are intended to store and release energy, has a high energy density and a long energy ???

IS THE ENERGY STORAGE BATTERY CHARGED



In this calculation, the energy storage system should have a capacity between 500 kWh to 2.5 MWh and a peak power capability up to 2 MW. Having defined the critical components of the charging station???the sources, the loads, the energy buffer???an analysis must be done for the four power conversion systems that create the energy paths in the station.



A battery energy storage system (BESS) is an electrochemical device that charges (or collects energy) from the grid or a power plant and then discharges that energy at a later time to provide electricity or other grid services when needed.



The former is the fundamental unit of electrochemical storage and discharge. A battery is comprised of at least one but possibly many such cells appropriately connected. The energy is stored