

# IS THE MORONI PUMPED STORAGE POWER STATION GOOD



What is pumped storage power station? Small and medium-sized pumped storage power stations are mainly used to store clean energysuch as wind and solar energy. Pumped storage has the characteristics of flexible operation and low environmental pressure,so it is a mature energy storage method with high economy and large capacity .



Should pumped storage power stations be planned according to local conditions? In 2021,the National Energy Administration made it clear in the Medium and Long Term Development Plan for Pumped Storage (2021???2035) that the construction of small and medium-sized pumped storage power stations should be planned according to local conditionsin provinces with better resources.



Can a pumped storage power station help a solar power plant? The same can be applied to solar generation: the pumped storage power station can contribute to constant electricity productionat night time when there is no sunshine to run a solar power plant. The flexibility extends not just to the turbine and tank sizes,but also to the depth the system is installed at.



How pumped storage power station can reduce the cost? Therefore, on the basis of conventional small hydropower, the transformation into a small pumped storage power station or joint operation with pumped storage can reduce the cost, shorten the construction period, solve the problem of site selection, improve the power station output in the dry season, and increase the economic benefits.



What is pumped storage power station (PSPS)? The pumped storage power station (PSPS) is a special power source that has flexible operation modes and multiple functions. With the rapid economic development in China,the energy demand and the peak-valley load difference of the power grid are continuing to increase.

# IS THE MORONI PUMPED STORAGE POWER STATION GOOD



Do Greek power systems need pumped storage? Caralis et al. examined the ability of the Greek power system to absorb renewable power and the necessity of pumped storage systems. Results showed that for the gradual increase of variable output of renewable energy sources (RES), pumped storage is required.



The periodic operation plan of the pumped storage power station has good adaptability, but it does not consider the impact of the pumped storage power plant's behavior on the market. Literature [7] establishes a multi-input decision factor model that can simulate the



Pumped-storage hydroelectricity (PSH), or pumped hydroelectric energy storage (PHES), is a type of hydroelectric energy storage used by electric power systems for load balancing. A PSH system stores energy in the form of gravitational potential energy of water, pumped from a lower elevation reservoir to a higher elevation. Low-cost surplus off-peak electric power is typically ???

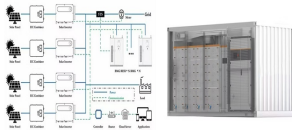


Pumped-storage power (PSP) station operation, known for its critical role in power grid system management, including load peak-shaving, load valley filling, frequency modulation, phase modulation, and emergency backup, holds great importance [3], [4], [5]. Hence, optimizing the operation of a PSP station to enhance power output can actively



Gouv?es pumped-storage hydroelectric power plant has an installed reversible capacity of 880 MW and, since 2022, has been delivering clean electricity to the grid from the T?mega giga battery. This facility is reversible, allowing water from the Daiv?es reservoir to be stored in the Gouv?es reservoir, taking advantage of the more than 650

# IS THE MORONI PUMPED STORAGE POWER STATION GOOD



The Nant de Drance pumped storage hydropower plant in Switzerland can store surplus energy from wind, solar, and other clean sources by pumping water from a lower reservoir to an upper one, 425 meters higher. The Yakamas think an old landfill on their reservation could be a good site for a 500-megawatt system, and have applied for DOE



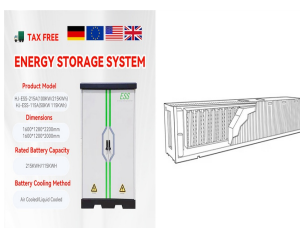
Pumped hydro storage power capacity [1] (Watts person ???1 ). A run-of-river hydroelectric power station that is downstream of a large dam. that could be used to form a good pumped hydro



A risky investment uses a higher discount rate. Almost all the costs of a pumped hydro system are up front, similar to a solar or wind power station, but unlike a gas power station where most of the costs are for fuel. A typical real (after subtracting inflation) discount rate for a low-risk investment is 5%.



PUMPED HYDROPOWER STORAGE Pumped Hydropower Storage (PHS) serves as a giant water-based "battery", helping to manage the variability of solar and wind power 1 BENEFITS Pumped hydropower storage (PHS) ranges from instantaneous operation to the scale of minutes and days, providing corresponding services to the whole power system. 2

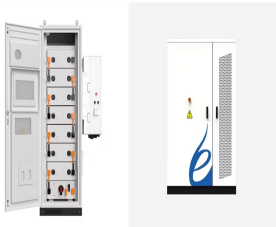


Pumped storage power plant, Power network operation Abstract: Pumped storage type power plants have been developed in Japan since 1930. Tokyo Electric Power Co., Inc. (TEPCO) has 9 pumped storage power plants with approximately 10,000 MW in total, including one under construction. They have contributed to stable operation of a huge

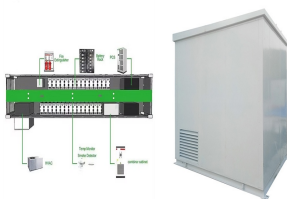
# IS THE MORONI PUMPED STORAGE POWER STATION GOOD



The secured capacity from pumped storage systems can rise to up to 16GW. Germany would be able to build and run fewer new gas power plants. The operation of the pumped storage systems would be profitable, and power generation costs would drop. At the same time macro-economic benefits are expected. The benefits



The pumped storage power station has the characteristics of frequency-phase modulation, energy saving, and economy, and has great development prospects and application value. In order to cope with the large-scale integration and intermittency of renewable energy and improve the ability of pumped storage units to participate in power grid frequency modulation, ???



Optimizing peak-shaving and valley-filling (PS-VF) operation of a pumped-storage power (PSP) station has far-reaching influences on the synergies of hydropower output, power benefit, and carbon

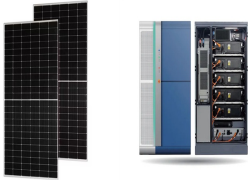


Figure 2: The plot above visualises (logarithmic scale used) the estimated discharge durations relative to installed capacity and energy storage capacity for some 250 pumped storage stations currently in operation, based on information from IHA's Pumped Storage Tracking Tool. The vast majority of pumped storage stations have a discharge duration longer ???



Introduction. Pumped storage power plants are a type of hydroelectric power plant; they are classified as a form of renewable (green) power generation.. Pumped storage plants convert potential energy to electrical energy, or, electrical energy to potential energy.They achieve this by allowing water to flow from a high elevation to a lower elevation, or, by pumping water from a ???

# IS THE MORONI PUMPED STORAGE POWER STATION GOOD



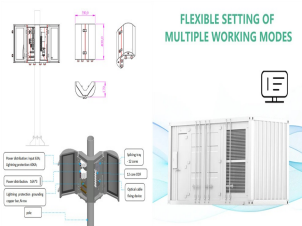
The construction of pumped storage power stations using abandoned mines would not only overcome the site-selection limitations of conventional pumped storage power stations in terms of height difference, water source, environment, etc. [18,19], but would also have great significance for the smooth availability of green energy, thus improving



Pumped storage hydropower, also known as "Pumped hydroelectric storage", is a modified version of hydropower that has surprisingly been around for almost a century now. As one of the most ???



1 ? This research article explores the potential of Pumped Storage Hydroelectric Power Plants across diverse locations, aiming to establish a sustainable electric grid system and ???



The pumped storage power station (PSPS) is a special power source that has flexible operation modes and multiple functions. With the rapid economic development in China, the energy demand and the



Entura completed a feasibility study for Genex Power's Kidston Pumped Storage Hydro Project in North Queensland in 2015-16. The project is now in construction and Entura is serving as Owner's Engineer. The project is highly significant because this will be the first pumped storage hydro project constructed in Australia in decades.

# IS THE MORONI PUMPED STORAGE POWER STATION GOOD



also does not have the basis to ease the cost of pumped storage power stations. The return on investment cannot be guaranteed, and the benefits of pumped storage power stations are often difficult to recover. The main body of pumped storage power station is non-power grid enterprise, and the operation mode is power grid leasing.



The design of pumped storage plant units has to ensure high availability and reliability for peak load operation. Over the past 50 years Alstom has continuously investigated and improved its designs to consider the cycling of machines, adjustable speed, efficiency and reliability. This paper takes an in-depth look at Alstom's experience of designing and installing ???



Pumped-Hydro Energy Storage Potential energy storage in elevated mass is the basis for . pumped-hydro energy storage (PHES) Energy used to pump water from a lower reservoir to an upper reservoir Electrical energy. input to . motors. converted to . rotational mechanical energy Pumps. transfer energy to the water as . kinetic, then . potential energy



The pumped storage power station has the characteristics of frequency-phase modulation, energy saving, and economy, and has great nonlinear control law to realize good control of uncertain and strong coupling system and enhance its robustness and adaptability [ 14]. Later, some literature attempts to apply ADRC to the LFC system.



Qingyuan pumped storage hydroelectric power plant make-up. Qingyuan pumped storage hydroelectric power station includes an upper and lower reservoir with a 500m elevation difference. The power plant has four generators with a capacity of 356MVA each with a voltage rating of 15.75kV. It has an underground powerhouse measuring 169.5m x 25.5m x 55.7m.