

# ISLE OF MAN ALFA ENERGY GROUP



Islands Energy Group, the parent company of Isle of Man Energy has announced the winners of its Together We Can Fund, part of its Sustainability Strategy. Ballakermeen High School have been given ?1,500 to fund a kerbside recycling programme and the installation of bins throughout their school.



ISLE OF MAN FUTURE ENERGY SCENARIOS 19th July 2021 ??? In December 2020, the Isle of Man Government launched its Future Energy Scenarios (FES) ??? If the Isle of Man gains access to GB's CFD market then there may be opportunity to export offshore wind directly from an offshore wind farm to GB



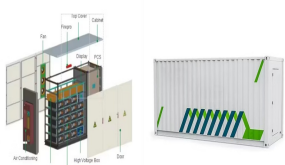
Jo is responsible for Guernsey Energy, Island Energy and Isle of Man Energy. Jo joined the company in 2021 with a wealth of experience in driving commercial growth and transforming businesses. Prior to this role Jo was Managing ???



Isle of Man EnergyEnergy has been providing energy for every generation for almost 200 years. a member of the Islands Energy Group. Website by BWI. IOM Gas Characteristics. IOM Natural Gas Characteristics. Calorific Value: ??? 37.5 to ??? 43.0 MJ/m 3: Hydrogen sulphide content:



Islands Energy Group is made up of three businesses based in Guernsey, Jersey and the Isle of Man ??? Guernsey Energy, Island Energy and Isle of Man Energy. We are the sole gas utility providing natural gas and/or liquefied petroleum gas to domestic, commercial and industrial customers across the islands.

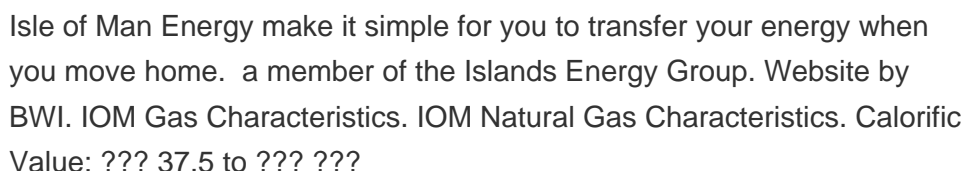
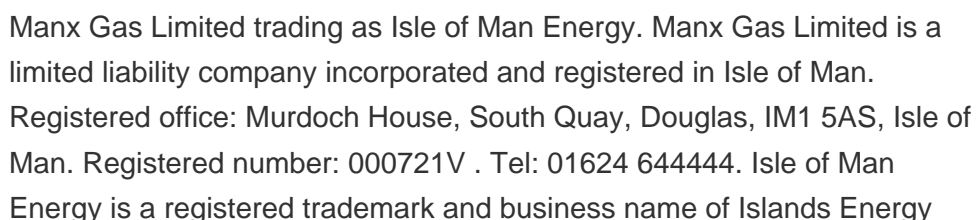
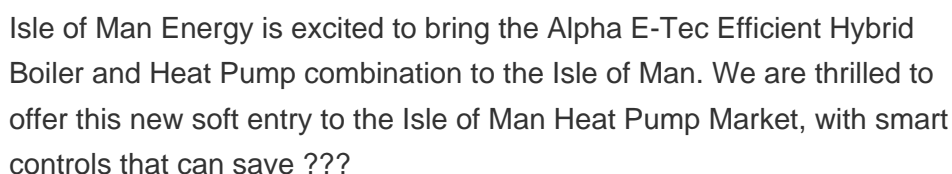
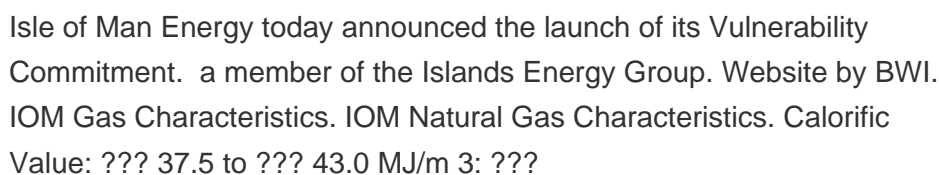
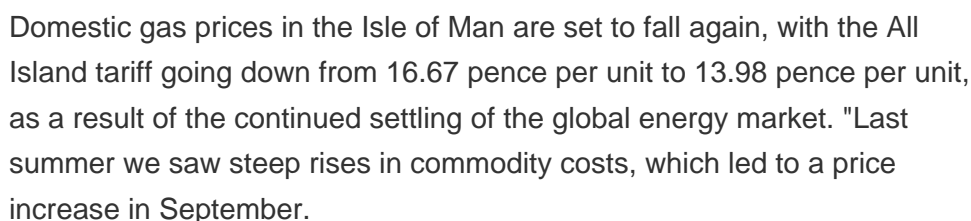
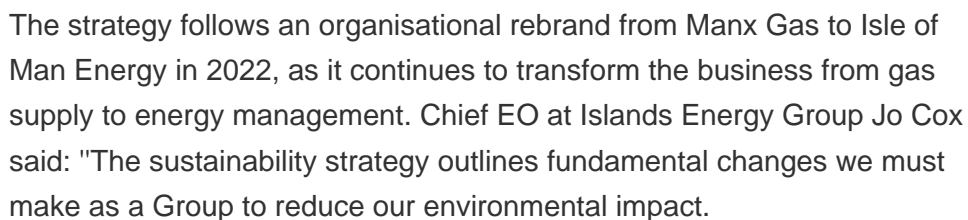


Our comfort checks are available to all customers and are completely free. Our energy advisers will visit your home at a time to suit you to discuss your energy needs and any concerns you have. They'll check your heating and hot water equipment to ensure it is all working safely and

# ISLE OF MAN ALFA ENERGY GROUP

---

efficiently and provide you with free energy saving advice.



# ISLE OF MAN ALFA ENERGY GROUP



Isle of Man Energy's e-billing platform is the quickest and easiest way to view your bill. a member of the Islands Energy Group. Website by BWI. IOM Gas Characteristics. IOM Natural Gas Characteristics. Calorific Value: ??? 37.5 to ??? ???



Installed by Isle of Man Energy approved contractors. Get a free consultation . Call us on 644444 a member of the Islands Energy Group. Website by BWI. IOM Gas Characteristics. IOM Natural Gas Characteristics. Calorific Value: ??? 37.5 to ??? 43.0 MJ/m 3: Hydrogen sulphide content:



Join Isle of Man Energy's vibrant team providing energy to homes and businesses across the island. a member of the Islands Energy Group. Website by BWI. IOM Gas Characteristics. IOM Natural Gas Characteristics. Calorific Value: ??? 37.5 to ??? 43.0 MJ/m 3: Hydrogen sulphide content:



Isle of Man Energy can help you save energy and money. Organise a free energy review and receive energy advice from our Energy Saving Trust-endorsed experts. a member of the Islands Energy Group. Website by BWI. IOM Gas Characteristics. IOM Natural Gas Characteristics. Calorific Value: ??? 37.5 to ??? 43.0 MJ/m 3: Hydrogen sulphide content



The energy sector is changing. We're having to re-evaluate our fundamental offering and consider how we contribute to a future that is greener, cleaner and better. Living in island communities amplifies this responsibility, as we can plainly see and imagine the impact that climate change is having on our coastlines, valleys, towns and wildlife.



Isle of Grain. Definition: LNG import and storage facility. Isle of Man to England Interconnector. Definition: A submarine power cable connecting the transmission system of the Manx Electricity Authority to that of Great Britain. With an undersea section of approximately 104 kilometers, it is the

# ISLE OF MAN ALFA ENERGY GROUP

---

longest AC undersea cable in the world.

# ISLE OF MAN ALFA ENERGY GROUP



Islands Energy Group is made up of three businesses based in Guernsey, Jersey and the Isle of Man ??? Guernsey Energy, Island Energy and Isle of Man Energy. We are the sole gas utility providing natural gas and/or liquefied petroleum gas ???



The Isle of Man Government has legislated to reduce its greenhouse gas emissions to net zero by 2050 and have an ambitious interim target to decarbonise the power sector by 2050. The Department of Environment, Food & Agriculture plays a key role in the important work of exploring the possible routes towards Government's targets and establishment and development of the ???



Isle of Man Energy, Douglas, Isle of Man. 1,749 likes ? 2 talking about this ? 19 were here. We're looking ahead for a brighter tomorrow with a focus on energy saving advice & technology. Isle of Man Energy | Douglas Isle Of Man

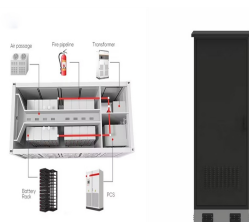


The energy sector is changing. We're having to re-evaluate our fundamental offering and consider how we contribute to a future that is greener, cleaner and better. Living in island communities amplifies this responsibility, as ???



Islands Energy Group (IEG), parent company of Guernsey/Island/Isle of Man Energy, has launched a fund that will give awards of up to ?5,000 to local environmental causes and initiatives. The Together We Can Fund will support locally based charities, projects and initiatives that benefit the environment and the wider community.

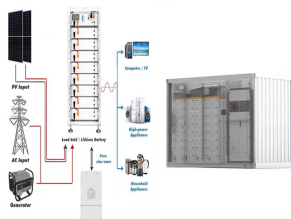
# ISLE OF MAN ALFA ENERGY GROUP



The Islands Energy Group leadership team is focused on commercial sustainability and innovation within the islands' communities. Isle of man Energy. Clive Doyle. Managing Director Island Energy. Darryl Goddard. Managing Director Guernsey Energy. our businesses . Guernsey Energy. Isle of Man Energy. Island Energy.



Islands Energy Group Limited Energy Centre, Admiral Park, St Peter Port, Guernsey GY1 2BB Website by BWI. Isle of Man Energy is pleased to announce that we have been working with the regulatory body CURA to approve a new gas tariff for January 2024. Gas prices in the Isle of Man are set to drop by 16% The store will not work correctly in



Islands Energy Group, the parent company of Crown Dependencies energy companies Guernsey Energy, Island Energy and Isle of Man Energy, has pledged to become a Net Zero business by 2050 in its newly ???



Isle of Man ???Future Energy Scenarios This report has been prepared specifically for and under the instructions and requirements of the Isle of Man Government under an appointment dated 16 December 2020, and a subsequent extension agreed on 03 June 2021, in connection with the development of Future Energy Scenarios.