

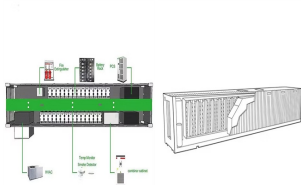
ISLE OF MAN BACKUP FVE



The Isle of Man's border has reopened to residents as coronavirus lockdown restrictions continue to be eased. It marks the transition from level five to level four of the government's border plan



He entered Isle of Man National Politics in 2004 and the following year was appointed Chairman of the publicly owned electricity utility company. After the 2006 General Election he was appointed the Minister for Health & Social Security where he remained for over three years. This was followed by Minister for Education and Children for 18 months.



A service agreement means it must remain available as a back-up vessel for Isle of Man services at certain times of the year. Winter pressures CalMac is anticipating a difficult winter season and



France's highest honour has been bestowed on five World War Two veterans at a special ceremony at Government House in the Isle of Man. Thomas Kneale, Thomas Clague, John Connor, Edward Holden and



Five members of the House of Keys are to examine the detail of proposed assisted dying laws on the Isle of Man. MHKs voted in favour of forming a committee to scrutinise the private member's bill



The Isle of Man Steam Packet Company has bought a back-up freight vessel for about ?8m. The MV Arrow had already been in use by the ferry firm since 2014.. The government-owned operator said the

ISLE OF MAN BACKUP FVE



Government Notes. The Isle of Man Bank's Cash Centre is based at 2 Athol Street, Douglas, Isle of Man IM99 3ED. The Cash Centre's e-mail address for queries is: cashcentreIOM@rbsint If you have a damaged Manx note or if you want to check the validity of a note in your possession, take it to any branch of the Isle of Man Bank. This



Isle of Man TT 2024: Five storylines that shaped the event The 2024 Isle of Man TT has come to a close and will be remembered for the historic achievements of Michael Dunlop. Lewis Duncan Jun 9



15 ? The Isle of Man Steam Packet Company said the 19:45 GMT crossing of the Manxman to Heysham Port, and its overnight return, were "at risk". Back-up ferry out on ???



The Isle of Man is renowned for their Christmas themed coins.. Traditionally the island release Christmas themed 50ps most years, however last year an incredibly popular Christmas ?2 coin was released for the very first time, and this has now been followed by a second ?2 this Christmas.. This year's magical design features an enchanting portrait of Old ???



The Isle of Man (population 50,000) is a British Crown Dependency in the middle of the Irish Sea. It is not legally part of the UK. It has its own parliament and makes its own laws. These are often similar to UK laws, but the island did not follow the UK in abolishing judicial corporal punishment in 1948. JUVENILE BIRCHINGS IN THE 1950s

ISLE OF MAN BACKUP FVE



4 ? This is a crucial week for the water industry. Regulator Ofwat will on Thursday give its "final determination" on how much bills will rise over the next five years. Before then, Britain's largest company Thames Water hopes to win court approval for a ?3bn bridging loan to stop it running out of



In Manx, the Isle of Man is known as Ellan Vannin or Manannan's Island - Manannan (a Celtic sea god) being apt for an isle that "turned the tide" in reviving its native language that UNESCO



The Isle of Man is an independent jurisdiction with its own legislation and tax system; it is not part of the UK or the EU. However, it has a unique relationship with the UK as it is a British Crown Dependency and is also considered to be part of



The Isle of Man is a special place and it is important to keep it that way. As we publish this vision and strategy, the Isle of Man is the only "entire nation" Biosphere. Let's embrace what Biosphere stands for and use it as a platform to work together for a sustainable future. By Hon Howard Quayle, Chief Minister of the Isle of Man and



The Isle of Man Government has committed to two ambitious targets for Electricity generation in support of the Climate Change Transition: 1) Securing no less than 75% of the Island's electricity from renewable sources by 2035 2) Net zero emissions from electricity generation by 2050.



Isle of Man ??? an overview The Island. The Isle of Man is in the middle of the Irish Sea at the centre of the British Isles. It is 33 miles (53km) long and 13 miles (22km) wide at its broadest point, with a total land area of 227 square miles (572 square km). The resident population at the 2011

ISLE OF MAN BACKUP FVE

census was 84,500, up 5.5% since 2006.

ISLE OF MAN BACKUP FVE



Overlook the pristine beauty of the Isle of Man coast line while you take a relaxing soak in one of our hot tubs with a glass or two of wine. The hot tubs are available daily but please refer to your rooms terms for any restrictions. Price Per Night From: ?225. Book your Getaway. info@seascape.im.



Visit Isle of Man has launched the final chapter of its Extraordinary Story tourism campaign aimed at attracting more visitors to experience the Island's unique UNESCO Biosphere status, by showcasing its extraordinary offering to potential visitors, from its ancient and compelling history, to the vibrancy of its culture and its adventure playground.



Isle of Man Gold Quintuple Sovereign Coin. This 1973 Isle of Man Five Sovereign Coin was struck by the Pobjoy Mint. The Manx coin is struck from 22 carat gold and contains the gold equivalent of five Sovereigns (1.1739 troy ounces). It is often referred to ???



The official coinage of the Isle of Man are denominated in Manx pounds from 1971 to 2016, coins of the Isle of Man were minted by Pobjoy Mint Limited. [1] Since 2017, coins of the Isle of Man have been minted by the Tower Mint.. Due to matching appearance and value of pound sterling coins, these coins often appear in circulation within the United Kingdom.

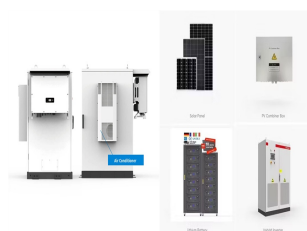


The Isle of Man had become physically separated from Great Britain and Ireland by 6500 BC. It appears that colonisation took place by sea sometime during the Mesolithic era (about 6500 BC). [1] The island has been visited by various raiders and trading peoples over the years. After being settled by people from Ireland in the first millennium AD, the Isle of Man was converted to ???

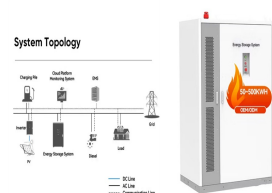
ISLE OF MAN BACKUP FVE



In this article, we explore 5 of the Isle of Skye's best Legends. Discover the locations on Scotland's most famous island that will have you captivated both by the scenery and the story. creatures said to be half-man ???



The Isle of Man (Manx: Ellan Vannin) is an island in the British Isles, sitting in the Irish Sea midway between Cumbria in England and County Down in Northern Ireland 's not part of the United Kingdom but is a Crown Dependency: its own elected parliament, the Tynwald, governs island affairs, but matters such as defence and foreign affairs are governed by the UK.



The history of Manx telecommunications starts in 1859, when the Isle of Man Electric Telegraph Company was formed on the Island with the intention of connecting across the Island by telegraph, and allowing messages to be sent onwards to the UK August 1859, a 36-nautical-mile (67 km; 41 mi) long cable was commissioned from Glass, Elliot and Company of ???



By 820 they had conquered and settled in the Isle of Man, establishing a prosperous Viking colony that benefited greatly from the trade between Ireland and the Scottish islands. The Isle of Man had a central location was on the sailing route from Scandinavia to Ireland. With its excellent fertile agricultural land and good harbours around the



2 ? A former flagship passenger ferry has been chartered to a Swedish operator to help with a freight backlog. The Ben-my-Chree was retained by the Isle of Man Steam Packet ???

ISLE OF MAN BACKUP FVE



3 ? 5 day weather forecast for the Isle of Man. Issued on Wednesday, 18 December 2024 at 6:00am by Ronaldsway Met Office. Forecast periods cover 24 hours from 6am each day to 6am on following day (min. temp. normally refers to start of period). Wind speeds are in mph. "Fog" implies very poor visibility.



The Independent Isle of Man Covid Review; Our Island Plan. Building a secure, vibrant and sustainable future is the vision set out by the Government in Our Island Plan. Secure We have an Island where everyone feels safe, our economy is secure, our health and education systems support everyone, and we have housing, food, energy, and transport



The UKHSA school survey is part of a wider radon study, with 700 properties due to be tested later this year to measure risk and bring the Isle of Man in line with health and safety measures in