

# JINAO PHOTOVOLTAIC PANEL PACKAGING DRAWINGS



Where should Jinko Solar PV modules be installed? .2.2 Site Selection  
In most applications, Jinko solar PV modules should be installed in a location where they will receive maximum sunlight throughout the year. In the Northern Hemisphere, the module should typically face south, and in the Southern Hemisphere, the modules should t



What should I know before installing Jinko Solar? as may be present. Do not remove any part installed by Jinko Solar or dis le the module. All instructions should be read and understood before attempting to install, wire, operate and ain the module. Don????t lift up PV modules using the attached cables he junction box. Do not touch live termin



Can I transport a PV module in series? elow pictures show. This is prohibitedand there is a risk of damage to the module and c se injury for you.Only PV modules with the same cell size should be nected in series.During transporting modules,please attempt to minimize shock or vibration to the module,as this may damage the module or lead t



What is the size of a Jinko junction box? ox may be damaged.The cable of the junction box is defined as L,as showed below in Figure 11. For Jinko standard full module L is 900/1200mm,the half???cut module L is 145/290mm,and the SWAN bifacial mo odule L is 150/250mm. For customized module,L can be base



Where can I find Jinko Solar product catalogue 2021? Consult Jinko Solar's entire Product catalogue 2021 catalogue on DirectIndustry. Page: 1/20

# JINAO PHOTOVOLTAIC PANEL PACKAGING DRAWINGS



What pressure does a Jinko module meet? er stickers match. Jinko modules are designed to meet a maximum positive (or downward) pressure of 3600Pa (Only refer to the mentioned module type in this manual) and negative (or upward) pressure of 1600Pa. This design load was then tested with a safety



These organic packaging materials are used to supply solar PV modules to remote construction sites. This problem, however, remains largely undocumented in the literature (Guerin 2020). These risks



PV technology is expected to play a crucial role in shifting the economy from fossil fuels to a renewable energy model (T. K?berger, 2018). Among PV panel types, crystalline silicon-based panels currently dominate the global PV landscape, recognized for their reliability and substantial investment returns (S. Preet, 2021). Researchers have developed alternative ???

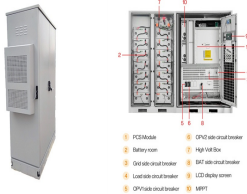


Packing method B: Plan 1 (Conventional Packaging) 1. Remove the wrapping film around the box and separate the upper and lower boxes. 2. The long side of the module to be unpacked needs to be close to a solid support for about 15-20cm distance, the ???



A ground mounted solar panel system is a system of solar panels that are mounted on the ground rather than on the roof of buildings. Photovoltaic solar panels absorb sunlight as a source of energy to generate electricity. A photovoltaic (PV) module is a packaged, and connected photovoltaic solar cells assembled in an array of various sizes.

# JINAO PHOTOVOLTAIC PANEL PACKAGING DRAWINGS



Our dedicated solar panel detailing team has the capabilities for creating preliminary, permit and installation drawings for residential as well as commercial buildings. Our rich experience in this field has enabled us to develop and evolve a custom procedure for panel detailing aimed at maximizing the efficiency of the team involved.



Visimation Inc., 4580 Klahanie Drive SE, #225, Sammamish, WA 98029  
ShapeSource by Visimation is your one-stop source for Visio stencils, Visio shapes and Visio templates. Browse our eCommerce website for both free and paid stencils for Microsoft Visio 2013, 2010 and older versions of Visio for creating professional quality technical drawings, maps, diagrams, ???



Just like framing, sorting, and packing can be manual, semi-automated, or fully automated. Manual solar panel machines are the least expensive and are typically suited for small-scale operations. Semi and fully-automated machines are more suited to medium to large-scale solar panel manufacturing. Automated sorting machines offer numerous benefits.



Our platform provides an intuitive interface that allows customers and professionals to configure a solar system based on location and energy needs. The AI-powered tool then generates a customized solar system design that takes into account various factors such as cost, tax incentives, and available solar radiation.



Find Solar Panel Drawing stock images in HD and millions of other royalty-free stock photos, illustrations and vectors in the Shutterstock collection. Thousands of new, high-quality pictures added every day.

# JINAO PHOTOVOLTAIC PANEL PACKAGING DRAWINGS



That goal was realized by replacing glass with a thin, clear polymer film of ethylene tetrafluoroethylene (ETFE), trademarked Tefzel, from DuPont Performance Materials (Wilmington, DE, US), resulting in Armageddon's version 1.0 panel design, SolarClover, the industry's first film-covered solar panel to meet the solar industry UL1703 standard (Standard ???)



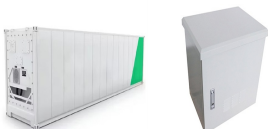
Veichi, as one of the leading monocrystalline solar panel manufacturers, provides series of photovoltaic panels with wholesale price, power ranges from 410-430W and 565-585W. We use cookies to personalize content and ads, to provide social ???



PV solar panels are most efficient when they receive direct sunlight. Proper planning is so crucial. If PV panels are oriented incorrectly, then their efficiency can drop dramatically. To get the most out of your PV solar panels, the PV panel positioning is critical. Solar panels can be either roof-mounted or ground mounted.

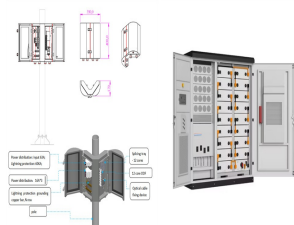


I can actually find myself using all 3 for the same drawing within 5 minutes thanks to copy/paste. None of them are designed for schematics, so there is a lot to be desired. Draw.io is free and web/cloud based. But, not collaborative. I did a lot of software design diagrams in Gliffy (commercial, \$96/year, web and cloud). But that is commercial

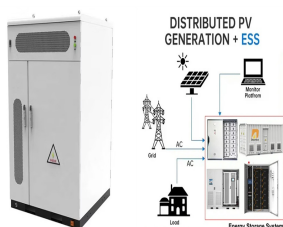


DRAWING NUMBER DATE Notes: Viridian Solar Atlas Building, 68 Stirling Way, Papworth, Cambs. CB23 3GY T 01480 831501 F 01480 831831 10 0161 of 6 NTS KTT Weight of solar panels: PV16-M10 = 25kg Where the panels are fitted into a pitched tiled roof, they are fixed directly above the roof battens with a uniformly distributed load of 12.8kg per

# JINAO PHOTOVOLTAIC PANEL PACKAGING DRAWINGS



All solar panel strings connected in parallel have to feature the same voltage, and they also have to comply with the NEC 690.7, NEC 690.8(A)(1), and NEC 690.8(A)(2). Modules need to be the same model in all ???



Ground Mounted System Site Plan and Solar Array Layout Drawing. Draw in the solar array(s) as a rectangle on the property map using the solar module dimensions provided in our Ground Mount Systems Page or a custom quantity.; The solar modules are racked in landscape (Length is East-West) in groups of three or four modules.



A typical solar panel used for residential purposes produces around 250 to 300 watts of power under ideal sunlight conditions. That means, during a sunny day, one panel might produce enough energy to power small ???



Understanding the intricacies of solar panel wiring diagrams is a crucial step towards achieving your renewable energy dream. In this extensive guide, we'll embark on a deep dive into the world of solar energy, covering everything from the basics of solar panel configurations and necessary equipment to the intricacies of designing a solar panel wiring diagram.



PV CAD. Speed in CAD for Distributed Generation. Quickly create precise engineering and permit-ready drawings for rooftop, carport, and ground mounted residential and C& I solar projects. Get a Free Trial. Compatible with ???

# JINAO PHOTOVOLTAIC PANEL PACKAGING DRAWINGS



We prepare all kinds of Solar Panel Layout drawings, right from the site plans to the mounting planes, conduit layouts and structural calculations. We typically provide a 24 hour turnaround to our regular clients. With the help of 3D imagery, we locate the specified address and the rooftop where the solar CAD panel has to be installed and



This commitment to sustainable packaging aligns seamlessly with the ethos of solar energy itself. IntelliTrack Insights: Enter the future of solar panel packaging with IntelliTrack, a breakthrough technology that equips solar packaging with real-time monitoring capabilities. Ficus Pax provides this smart solution that captures data on



5 Avoiding Common Mistakes in Solar Panel Packaging; 6 The Impact of Packaging on Transportation Efficiency; 7 Case Study: Implementing Effective Solar Panel Packaging for Safe Transport. 7.1 Background; 7.2 Project Overview; 7.3 Implementation; 7.4 Results; 7.5 Summary; 8 Expert Insights From Our Solar Panel Installers About The Importance of



Photovoltaic (PV) systems (or PV systems) convert sunlight into electricity using semiconductor materials. A photovoltaic system does not need bright sunlight in order to operate. It can also generate electricity on cloudy and rainy days from reflected sunlight. PV systems can be designed as Stand-alone or grid-connected systems.