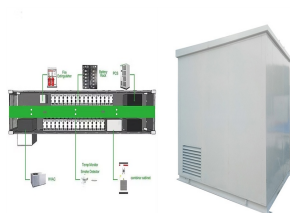
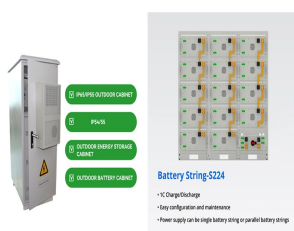


# JINKO PHOTOVOLTAIC PANELS



With headquarters in Shanghai, they serve over 3,000 customers in more than 190 countries & regions worldwide. 1 in every 8 Solar Modules installed globally has a Jinko Badge. Jinko Tiger NEO- TOPCon range is the best-selling N-type solar panel in the industry.



No. of cells Dimensions Weight Front Glass Frame Junction Box Output Cables 24.2 kg (53.35 lbs) IP68 Rated Electrical Performance & Temperature Dependence Irradiance 1000W/m<sup>2</sup> AM=1.5 NOCT: Irradiance 800W/m<sup>2</sup> AM=1.5 \*STC: Wind Speed 1m/s Module Type Maximum Power (P<sub>max</sub>) Maximum Power Voltage (V<sub>mp</sub>) Maximum Power Current (I<sub>mp</sub>) Open-circuit ???



The EAGLE (R) G6 modules utilize our latest flagship TOPCon cell technology, featuring record breaking cell efficiencies of over 26%. EAGLE (R) G6 TOPCon modules offer industry-leading power and efficiency, along with improved energy performance and reliability.



The Jinko Tiger Neo 440Wp All Black Solar Panel (JKM440N-54HL4R-B) has excellent light trapping technology and current collection to improve power output, efficiency and reliability of the module. Features of the Jinko Tiger Neo 440Wp TOPCon N ???



No. of cells Dimensions Weight Front Glass Frame Junction Box Output Cables 28 kg (61.73 lbs) IP68 Rated Electrical Performance & Temperature Dependence Irradiance 1000W/m<sup>2</sup> AM=1.5 NOCT: Irradiance 800W/m<sup>2</sup> AM=1.5 \*STC: Wind Speed 1m/s Module Type Maximum Power (P<sub>max</sub>) Maximum Power Voltage (V<sub>mp</sub>) Maximum Power Current (I<sub>mp</sub>) Open-circuit Voltage ???

# JINKO PHOTOVOLTAIC PANELS



JinkoSolar is the world's No.1 solar panel manufacturer. Quality, reliability and unrivalled performance! Skip to main content. Global Site; Investor Relations; Jinko Solar Energy Storage; Search. facebook; Jinko Solar Australia Holdings Co Pty Ltd. 2A 152 Marsden St, Parramatta NSW 2150 aus@jinkosolar +61 1300 326 182. Search. facebook



The Jacksonville, Florida, location has been producing solar panels since 2018. Jinko solar panel cost. A solar energy system built with Jinko solar panels typically costs around \$2.60 per watt. That means a 6 kilowatt (kW) Jinko system will cost you about \$16,000 before incentives. For reference, an average solar panel installation costs about



No. of cells Dimensions Weight Front Glass Frame Junction Box Output Cables 34.6kg (76.38 lbs) IP68 Rated Electrical Performance & Temperature Dependence Irradiance 1000W/m<sup>2</sup> AM=1.5 NOCT: Irradiance 800W/m<sup>2</sup> AM=1.5 \*STC: Wind Speed 1m/s Module Type Maximum Power (P<sub>max</sub>) Maximum Power Voltage (V<sub>mp</sub>) Maximum Power Current (I<sub>mp</sub>) Open-circuit ???



The higher performance Tiger series are rated from 370W up to 470W and feature many of the latest innovations in PV cell technology including larger size cells, multi-busbar (MBB) with 9 thin wire busbars (as opposed to traditional flat ribbon busbars) and what Jinko has termed "Tiling Ribbon" or TR for short. Tiling ribbon is a manufacturing technique ???



Jinko Solar Co., Ltd. (referred to as "JinkoSolar", NYSE: JKS) is a global solar technology leader, excelling in integrated research, development, and manufacturing of photovoltaic products. Serving 200+ countries, it leads global mainstream photovoltaic sales and pioneers "vertical integration" in production, JinkoSolar owns 10+ globalized manufacturing bases.

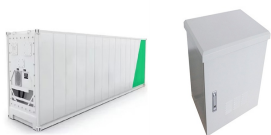
# JINKO PHOTOVOLTAIC PANELS



W Solar Panel 108 Cells JKM425N-54HL4-B BOB Clearance. Price per Watt \$0.44; Rated Power Output 425 W; Voltage (VOC) 32.73V; Number of cells 108; Cell Type Monocrystalline; Pickup on Fri, Dec 06 from Millstone, NJ. \$271 \$186.40. Add to cart. In stock. 21% OFF. LONGi 540W Solar Panel 144 Cell LR5-72HBD-540M Clearance.



PHOTOVOLTAIC MODULES This manual is for Jinko solar PV module storage and unpacking instructions. To ensure the safety of loading, unloading, unpacking When you need to unpack and install the modules, you can search and download relevant content from Jinko's official website. () HANDLING INFORMATION 1.1



No. of cells Dimensions Weight Front Glass Frame Junction Box Output Cables 32 kg (70.55 lbs) IP68 Rated Electrical Performance & Temperature Dependence Irradiance 1000W/m<sup>2</sup> AM=1.5 NOCT: Irradiance 800W/m<sup>2</sup> AM=1.5 \*STC: Wind Speed 1m/s Module Type Maximum Power (Pmax) Maximum Power Voltage (Vmp) Maximum Power Current (Imp) Open-circuit Voltage ???



Jinko's latest N-Type modules are loaded with features and technologies that deliver a high power performance and guarantee reliability and safety over a long lifetime. Key features: Hot 2.0 Technology improves reliability and lowers ???



The Eagle Series is the most affordable panel in Jinko's Australian solar panel range. The Eagle Plus module conversion efficiency (up to 18.57%) is boosted by PERC technology (developed initially at UNSW) and ???

# JINKO PHOTOVOLTAIC PANELS



No. of cells Dimensions Weight Front Glass Frame Junction Box Output Cables 34.6kg (76.38 lbs) IP68 Rated Electrical Performance & Temperature Dependence Irradiance 1000W/m<sup>2</sup> AM=1.5 NOCT: Irradiance 800W/m<sup>2</sup> AM=1.5 \*STC: Wind Speed 1m/s Module Type Maximum Power (P<sub>max</sub>) Maximum Power Voltage (V<sub>mp</sub>) Maximum Power Current (I<sub>mp</sub>) Open-circuit ???



Jinko Solar Panel Review. Jinko Solar: Most Chosen Solar Panel Brand. As solar technology has matured, the challenge is to harness the sun's power in the most reliable and cost effective manner in order to fulfill energy needs for decades ???



No.of cells Dimensions Weight Front Glass Frame Junction Box Output Cables 26.1 kg (57.54 lbs) IP67 Rated Electrical Performance & Temperature Dependence STC: Irradiance 1000W/m<sup>2</sup> AM=1.5 NOCT: Irradiance 800W/m<sup>2</sup> AM=1.5 \* Power measurement tolerance: ? 3% \* Wind Speed 1m/s Module Type Maximum Power (P<sub>max</sub>) Maximum Power Voltage (V<sub>mp</sub>) Maximum



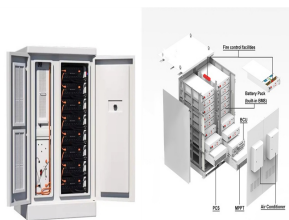
Jinko Solar Panels JinkoSolar is one of the most innovative solar module manufacturers in the world, and have been vying for the position of the largest solar manufacturer. Thanks to their focus on R& D, they were among the first to offer leading efficiencies and performance with their N-type mono products, and have a wide range of panels to suit both the domestic and the C& I ???



Jinko Solar's Tiger Neo 72HC solar panel is designed to deliver high performance and reliability for residential, commercial, and utility-scale solar projects. With an ultra-high power output of up to 585W, the Tiger Neo 72HC is one of the most efficient solar panels available on the market today.

# JINKO PHOTOVOLTAIC PANELS

---



Additional value from Jinko Solar's linear warranty 5 Busbar Solar Cell: 5 busbar solar cell adopts new technology to improve the efficiency of modules, offers a better aesthetic appearance, making it perfect for rooftop installation. (5BB) PID RESISTANT: Jinko PV Material. Title: Eagle JKM330-350M-72-V-A1-EN.ai



In most applications, Jinko solar PV modules should be installed in a location where they will receive maximum sunlight throughout the year. In the Northern Hemisphere, the module should typically face south, and in the Southern Hemisphere, the modules should typically face north. Modules facing 30 degrees away



Jinko Solar Import and Export Co., Ltd. ("Jinko") generally provides the Warranties set forth herein to the original purchaser and its permitted successors and assigns ("Customer") with respect to any solar photovoltaic module set forth herein sold by Jinko under purchase agreements signed