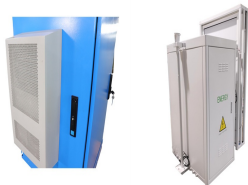


JIYUAN FLYWHEEL ENERGY STORAGE



Beacon Power is building the world's largest flywheel energy storage system in Stephentown, New York. The 20-megawatt system marks a milestone in flywheel energy storage technology, as similar systems have only been applied in testing and small-scale applications. The system utilizes 200 carbon fiber flywheels levitated in a vacuum chamber.



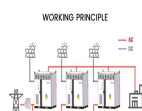
The anatomy of a flywheel energy storage device. Image used courtesy of Sino Voltaics . A major benefit of a flywheel as opposed to a conventional battery is that their expected service life is not dependent on the number of charging cycles or age. The more one charges and discharges the device in a standard battery, the more it degrades.



Flywheel energy storage technology is a form of mechanical energy storage that works by accelerating a rotor (flywheel) to a very high speed and maintaining the energy in the system as kinetic energy.

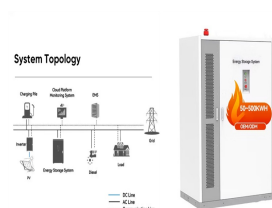


Energy storage system represented by chemical battery and flywheel energy storage system is fast-ramping and responses quickly in frequency regulation market. It shows outstanding performance in frequency regulation comparing with the traditional frequency regulation resource. Huang Jiyan, Chen Yuanyang et al 2016 Review on large-scale

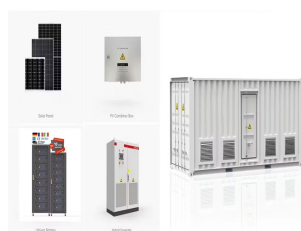


Lets check the pros and cons on flywheel energy storage and whether those apply to domestic use ():Compared with other ways to store electricity, FES systems have long lifetimes (lasting decades with little or no maintenance;[2] full-cycle lifetimes quoted for flywheels range from in excess of 10 5, up to 10 7, cycles of use),[5] high specific energy (100???130 ???

JIYUAN FLYWHEEL ENERGY STORAGE



This paper presents an overview of the flywheel as a promising energy storage element. Electrical machines used with flywheels are surveyed along with their control techniques. Loss minimization



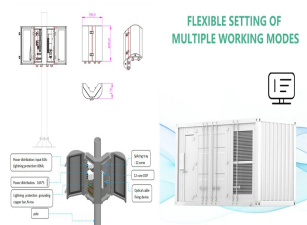
Flywheel Energy Storage System (FESS) Revterra Kinetic Stabilizer Save money, stop outages and interruptions, and overcome grid limitations. Sized to Meet Even the Largest of Projects. Our industrial-scale modules provide 2 MW of power and can store up to 100 kWh of energy each, and can be combined to meet a project of any scale.



Flywheel energy storage systems can be mainly used in the field of electric vehicle charging stations and on-board flywheels. Electric vehicles charging station: The high-power charging and discharging of electric vehicles is a high-power pulse load for the power grid, and sudden access will cause the voltage drop at the public connection point



The core element of a flywheel consists of a rotating mass, typically axisymmetric, which stores rotary kinetic energy E according to (Equation 1) $E = \frac{1}{2} I \omega^2$ [J], where E is the stored kinetic energy, I is the flywheel moment of inertia [kgm²], and ω is the angular speed [rad/s]. In order to facilitate storage and extraction of electrical energy, the rotor ???



One energy storage technology now arousing great interest is the flywheel energy storage systems (FESS), since this technology can offer many advantages as an energy storage solution over the



The flywheel schematic shown in Fig. 11.1 can be considered as a system in which the flywheel rotor, defining storage, and the motor generator, defining power, are effectively separate machines that can be designed accordingly and matched to the application. This is not unlike pumped

JIYUAN FLYWHEEL ENERGY STORAGE

hydro or compressed air storage whereas for electrochemical storage, the
???

JIYUAN FLYWHEEL ENERGY STORAGE



diy Flywheel Energy Storage System for storing Electricity as. I'm gonna build a Flywheel Energy Storage (FES) that works by accelerating a rotor (flywheel) to a very high speed and maintaining the energy in the system a



Falcon Flywheels is an early-stage startup developing flywheel energy storage for electricity grids around the world. The rapid fluctuation of wind and solar power with demand for electricity creates a need for energy storage. Flywheels are an ancient concept, storing energy in the momentum of a spinning wheel.



The main components of a typical flywheel. A typical system consists of a flywheel supported by rolling-element bearing connected to a motor/generator. The flywheel and sometimes motor/generator may be enclosed in a vacuum chamber to reduce friction and energy loss.. First-generation flywheel energy-storage systems use a large steel flywheel rotating on mechanical ???



Flywheel energy storage systems (FESS) employ kinetic energy stored in a rotating mass with very low frictional losses. Electric energy input accelerates the mass to speed via an integrated motor-generator. The energy is discharged by drawing down the kinetic energy using the same motor-generator. The amount of energy that can be stored is



Flywheel Energy Storage (FES) systems refer to the contemporary rotor-flywheels that are being used across many industries to store mechanical or electrical energy. Instead of using large iron wheels and ball bearings, advanced FES systems have rotors made of specialised high-strength materials suspended over frictionless magnetic bearings

JIYUAN FLYWHEEL ENERGY STORAGE



Thanks to the unique advantages such as long life cycles, high power density and quality, and minimal environmental impact, the flywheel/kinetic energy storage system (FESS) is gaining steam recently.



Flywheel energy storage systems are feasible for short-duration applications, which are crucial for the reliability of an electrical grid with large renewable energy penetration. Flywheel energy storage system use is increasing, which has encouraged research in design improvement, performance optimization, and cost analysis.



A two-layer optimization strategy for the battery energy storage system is proposed to realize primary frequency regulation of the grid in order to address the frequency fluctuation problem caused



Pic Credit: Energy Storage News A Global Milestone. This project sets a new benchmark in energy storage. Previously, the largest flywheel energy storage system was the Beacon Power flywheel station in Stephentown, New York, with a capacity of 20 MW. Now, with Dinglun's 30 MW capacity, China has taken the lead in this sector.. Flywheel storage ???



The flywheel energy storage system (FESS) offers a fast dynamic response, high power and energy densities, high efficiency, good reliability, long lifetime and low maintenance requirements, and is



Energy storage flywheel systems are mechanical devices that typically utilize an electrical machine (motor/generator unit) to convert electrical energy in mechanical energy and vice versa. Energy is stored in a fast-rotating mass known as the flywheel rotor. The rotor is subject to high

JIYUAN FLYWHEEL ENERGY STORAGE

centripetal forces requiring careful design, analysis, and fabrication to ensure the safe ???

JIYUAN FLYWHEEL ENERGY STORAGE



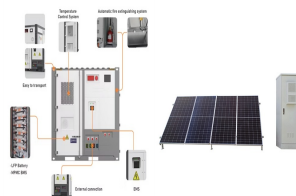
This chapter provides an overview of energy storage technologies besides what is commonly referred to as batteries, namely, pumped hydro storage, compressed air energy storage, flywheel storage, flow batteries, and power-to-X ???



The literature 9 simplified the charge or discharge model of the FESS and applied it to microgrids to verify the feasibility of the flywheel as a more efficient grid energy storage technology. In the literature, 10 an adaptive PI vector control method with a dual neural network was proposed to regulate the flywheel speed based on an energy optimization ???



An overview of system components for a flywheel energy storage system. Fig. 2. A typical flywheel energy storage system [11], which includes a flywheel/rotor, an electric machine, bearings, and power electronics. Fig. 3. The Beacon Power Flywheel [12], which includes a composite rotor and an electric machine, is designed for frequency



This review presents a detailed summary of the latest technologies used in flywheel energy storage systems (FESS). This paper covers the types of technologies and systems employed within FESS, the range of materials used in the production of FESS, and the reasons for the use of these materials. Furthermore, this paper provides an overview of the ???



Flywheel energy storage technology usually takes "hours" as the unit of storage time, and its storage . JiYuan Huang, Peiqiang Li, et al. Performance evaluation of primary frequency .