

LAND MANAGEMENT FOR NEW ENERGY STORAGE PROJECTS



Why should you lease a site for a battery energy storage system? Land is the most important resource for the development of battery energy storage systems. Several factors must be considered when considering the leasing of a site for a BESS project, some of the most important being: The size of the land required for a BESS project depends on the capacity of the battery system.



What is a battery energy storage system? Battery Energy Storage Systems (BESS) are rapidly emerging as a critical component of the renewable energy landscape. As the demand for clean and reliable energy grows, BESS plays a crucial role in ensuring grid stability and optimizing energy utilization. Land requirements are a significant factor in the development of BESS projects.



Why are solar & battery storage lease rates increasing? The increasing demand for landsuitable for solar and battery storage projects has driven up lease rates in recent years, especially because of the incentives offered by the IRA Renewable Energy. As the industry expands, competition for land is intensifying, particularly in regions with favorable solar and wind resources.



How land requirements affect Bess projects in 2024? Land requirements are a significant factor in the development of BESS projects. Understanding the land needs, lease rates, and other related considerations is essential for project feasibility and profitability. So, let's explore all the details associated with BESS projects in 2024.



What is the average lease rate for solar projects? Recent research by Purdue University revealed that the average lease rate for solar projects has exceeded \$1,000 per acre in many regions. With the growing interest in BESS projects, it's reasonable to expect similar trends in land lease rates for battery storage facilities.

LAND MANAGEMENT FOR NEW ENERGY STORAGE PROJECTS



How much does a solar project cost per acre? As the industry expands, competition for land is intensifying, particularly in regions with favorable solar and wind resources. Recent research by Purdue University revealed that the average lease rate for solar projects has exceeded \$1,000 per acre in many regions.



Energy-Storage.news" publisher Solar Media will host the 1st Energy Storage Summit Asia, 11-12 July 2023 in Singapore. The event will help give clarity on this nascent, yet quickly growing market, bringing together a ???



National Grid engineers handling earthing cables. Image: National Grid. The UK government has not ruled out changing grid access rights for new energy storage projects as part of its REMA reforms, a potential move that ???



Battery Energy Storage Systems (BESS) are rapidly emerging as a critical component of the renewable energy landscape. As the demand for clean and reliable energy grows, BESS plays a crucial role in ensuring grid stability ???



Subscribe to Newsletter Energy-Storage.news meets the Long Duration Energy Storage Council Editor Andy Colthorpe speaks with Long Duration Energy Storage Council director of markets and technology Gabriel ???

LAND MANAGEMENT FOR NEW ENERGY STORAGE PROJECTS



The Investment Tax Credit (ITC), previously applicable to solar projects, has been expanded to include energy storage systems. The base ITC for energy storage is 6% of the project's qualifying costs. However, this can be ???



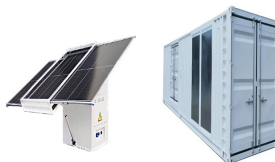
Despite the fact that energy storage is regarded as relatively new in Ireland, the 2020 goal of 40 per cent renewable electricity and energy storage project developers have been successful in winning contracts in EirGrid's DS3 ???



Energy Storage Initiative. The Energy Storage Initiative supported energy storage technologies and projects to: improve the reliability of Victoria's electricity system; drive the development of clean technologies; boost the local ???



The Waratah Super Battery project is being delivered as a priority transmission infrastructure project under the Electricity Infrastructure Investment Act 2020 (the Act), and is the first such project to be delivered under this Act.. ???

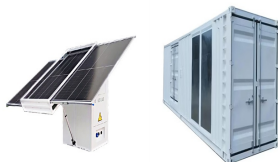


ILI Group has a portfolio of over 4.7GW energy storage projects, including 2.5GW of utility-scale battery storage and 2.5GW pumped storage hydro. In July, the group submitted a Section 36 planning application for a ???

LAND MANAGEMENT FOR NEW ENERGY STORAGE PROJECTS



A 230MW battery energy storage system (BESS) project from NextEra Energy Resources has come online in California, US. The Bureau of Land Management (BLM), Recent significant solar-plus-storage projects it ???



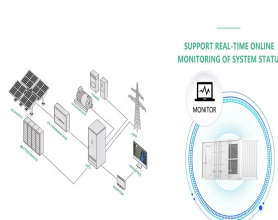
In November 2023, the transmission connection queue stood at 400 GW, of which 72 GW was from battery energy storage projects. At the end of April 2024, the total queue now stands at 510 GW, with a further 200 GW in ???



Discover the potential of your land for energy storage. Learn about land leasing opportunities for battery storage projects, financial benefits, environmental impact, and the process of partnering with energy developers.



Delivered by Invinity Energy Systems plc (AIM:IES), a leading global manufacturer of utility-grade energy storage, in partnership with Pivot Power, has been awarded over ?700,000 funding for a feasibility study into ???



The notice further clarifies the market position of new energy storage systems from four aspects: First, encouraging independent participation of new energy storage systems in the power ???

LAND MANAGEMENT FOR NEW ENERGY STORAGE PROJECTS



In previous posts in our Solar + Energy Storage series we explained why and when it makes sense to combine solar + energy storage and the trade-offs of AC versus DC coupled systems as well as co-located versus ???



Experts said developing energy storage is an important step in China's transition from fossil fuels to a renewable energy mix, while mitigating the impact of new energy's randomness, volatility, intermittence on the grid and ???



The US Bureau of Land Management (BLM) has given the green light for construction to begin on a second large-scale battery storage system at Desert Sunlight, a solar PV plant on lands it manages in California. The ???



In the first installment of our series addressing best practices, challenges and opportunities in BESS deployment, we will look at models and recommendations for land use permitting and environmental review ???