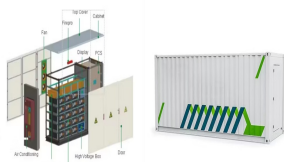
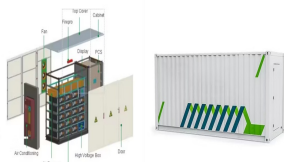


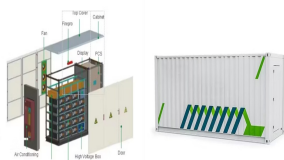
LAND USE NATURE OF INDEPENDENT ENERGY STORAGE POWER STATION



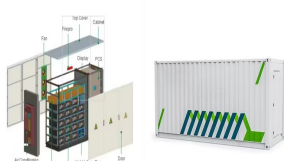
What is the energy storage system? The energy storage system includes 1x5 MWx2 h LiB, 1x2 MWx2 h VRFB. And the wind power of 99 MW had been put into operation in August 2012. The system is connected with the 35 kV bus. Through intelligent control, the system stores and releases power according to the coordinating with wind power.



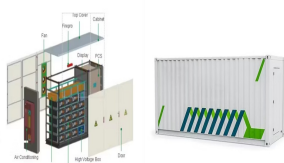
How many kW is a solar energy storage system? The wind power is 2x780 kW, the PV power is 300 kW. The energy storage system includes 1x2 MWx2 h PbAB, 1x500 kWx15 s SCES and 5x500 kW bidirectional converters. The system can realize the flexible shift between on-grid and off-grid operation. This bidirectional balance can guarantee the island's power utilization.



Does energy storage industry need a policy guidance? Sungrow Power Supply Co., Ltd.: energy storage industry needs the policy guidance urgently. Machinery & Electronics Business; 2015-6-22: A06. Policy and innovation are key factors for the development of energy storage technology. China Electric Power News; 2016-4-28: 008. Lin Boqiang.

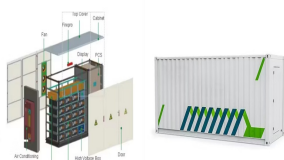


Is energy storage a precondition for large-scale integration and consumption? So to speak, energy storage is the precondition of large-scale integration and consumption of RES. However, China's energy storage industry is at the exploration stage and far from commercialization. This restricts the development of RES to certain extent. For this reason, this paper will concentrate on China's energy storage industry.

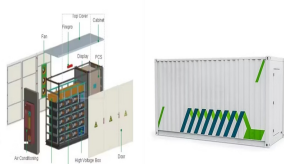


What are the benefits of electric power system in industrial park? Users in industrial park can regulate their electric load autonomously. The system can smooth PV generation, and level peak-valley electric quantity. The system is benefit for energy storage, peak-shaving, valley-filling, and stabilizing intermittent RES generation. It is an important technology support for smart grid.

LAND USE NATURE OF INDEPENDENT ENERGY STORAGE POWER STATION



What is the energy storage subsidy? The upper limit is 1 million yen for household and 0.1 billion yen for commercial consumers. The object of this subsidy is not only optimizing electricity system operation, but also evaluating the influence of large-scale production for battery costs. Compared with the US and Japan, EU started late in energy storage policies.



With the development of metro systems, the problem of unbalanced ridership into and out of the stations, caused by the singleness of station area development, has become increasingly prominent. Research on ???



In order to promote the deployment of large-scale energy storage power stations in the power grid, the paper analyzes the economics of energy storage power stations from three aspects of ???



Current power systems are still highly reliant on dispatchable fossil fuels to meet variable electrical demand. As fossil fuel generation is progressively replaced with intermittent ???



When the energy storage absorption power of the system is in critical state, the over-charged energy storage power station can absorb the multi-charged energy storage of ???

LAND USE NATURE OF INDEPENDENT ENERGY STORAGE POWER STATION



China Central Television (CCTV) recently aired the documentary Cornerstones of a Great Power, which vividly describes CATL's efforts in the technological breakthrough of long-life batteries. The Jinjiang 100 MWh ???



With such high expected shares of wind and solar power by 2020, the long-term energy storage becomes crucial to smooth supply fluctuations over days, weeks or months, ???



2023, ???46, "", ???, ??

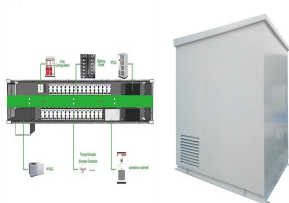


Shared energy storage has been shown in numerous studies to provide better economic benefits. From the economic and operational standpoint, Walker et al. [5] compared ???

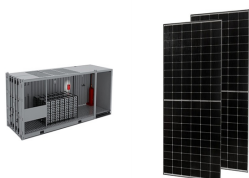


On May 14, 1968, the first PSPS in China was put into operation in Gangnan, Pingshan County, Hebei Province. It is a mixed PSPS. There is a pumped storage unit with the installed capacity ???

LAND USE NATURE OF INDEPENDENT ENERGY STORAGE POWER STATION



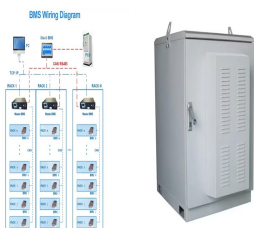
„??????,15000???7000 ???



Independent energy storage, also known as "independent energy storage power station", differs from traditional energy storage products in its unique independence. It possesses independent ???



In addressing the query regarding the nature of land use for energy storage power stations, several critical components emerge. 1. Land utilization dynamics are intricately linked ???



This article provides a comprehensive guide on battery storage power station (also known as energy storage power stations). These facilities play a crucial role in modern power grids by storing electrical energy for later use. ???



This article establishes a full life cycle cost and benefit model for independent energy storage power stations based on relevant policies, current status of the power system, ???

LAND USE NATURE OF INDEPENDENT ENERGY STORAGE POWER STATION



In the multi-station integration scenario, energy storage power stations need to be used efficiently to improve the economics of the project. In this paper, the life model of the ???



As the hottest electric energy storage technology at present, lithium-ion batteries have a good application prospect, and as an independent energy storage power station, its business model ???



However, due to seasonal and cyclical variations in the amount of energy, wind power or solar photovoltaic power generation alone suffers from the defect of unstable power ???



The total onshore area of the calculation cells was 305,100 km² the optimistic land use scenario the available area for wind power development was 109,200 km² (35.8% of the total) and in the



Large-scale integration of renewable energy in China has had a major impact on the balance of supply and demand in the power system. It is crucial to integrate energy storage devices within wind power and photovoltaic ???