

# LARGE ENERGY STORAGE BATTERY DETECTION



The following document summarizes safety and siting recommendations for large battery energy storage systems (BESS), defined as 600 kWh and higher, as provided by the New hazard detection systems; means of protecting against incipient fires; and ventilation and/or cooling strategies for protecting against thermal runaway, fires, and



The ISC evolution is presented based on the upper summary. Then, the ISC detection methods are reviewed: (1) comparing the measured data with the predicted value from the model; (2) detecting whether the battery has self-discharge; (3) comparing based on the battery inconsistency and (4) other signals.



Products cover battery cells, modules, as well as large industrial and commercial energy with cost and solution advantages in large energy storage. System Features. Rack visual switches. Short circuit protection. Fire suppression system. Water fire extinguishing system. Intrusion detection system. Golden Shield controller. Service Hotline



The detection method of battery parameters in battery management system is simple and 3551???5325), the value has a large deviation, but the predicted value in the overcharge and over discharge state has a good match. Fault evolution mechanism for lithium-ion battery energy storage system under multi-levels and multi-factors. J. Energy



In large-scale energy storage systems, the early detection of faults in battery cells can prevent cascading failures and optimize storage efficiency. Industrial and grid-scale ???

# LARGE ENERGY STORAGE BATTERY DETECTION



Fire Suppression in Battery Energy Storage Systems. generation modules. There were no injuries, but the fire did over \$300,000 in damage. Gas Detection By and large, BMSs do their job extremely well. However, if the BMS becomes damaged or ???



Dubarry, M. et al. Battery energy storage system battery durability and reliability under electric utility grid operations: analysis of 3 years of real usage. J. Power Sources 338, 65773 (2017).



Safety concerns are the main obstacle to large-scale application of lithium-ion batteries (LIBs), and thus, improving the safety of LIBs is receiving global attention. based on equilibrium electric quantity compensation to address negative impact of the equalization function of the battery management system on ISC detection, and effective



The amount of gas is related to battery capacity. Energy-storage systems typically use high-capacity batteries (generally greater than 100 Ah). Large-capacity batteries release more gas. Fast thermal runaway detection for lithium-ion cells in large scale traction batteries. Batteries, 4 (2018), p. 16, 10.3390/batteries4020016. View in



In November of 2017, a fire at a Belgium grid-connected lithium-ion battery energy storage site near Brussels resulted in a cloud of toxic fumes that forced thousands of residents to stay at home. In April of 2019, a lithium-ion battery system exploded at an Arizona Public Service site, severely injuring eight firefighters.

# LARGE ENERGY STORAGE BATTERY DETECTION

114KWh ESS



\*Recommended practice for battery management systems in energy storage applications IEEE P2686, CSA C22.2 No. 340 \*Standard communication between energy storage system components MESA-Device Specifications/SunSpec Energy Storage Model Molded-case circuit breakers, molded-case switches, and circuit-breaker enclosures UL 489



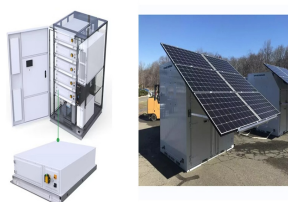
Internal short circuit (ISC) is a critical cause for the dangerous thermal runaway of lithium-ion battery (LIB); thus, the accurate early-stage detection of the ISC failure is critical to improving the safety of electric vehicles. In this paper, a model-based and self-diagnostic method for online ISC detection of LIB is proposed using the measured load current and terminal ???



Large-Scale Battery Storage (LSBS) is an emerging industry in Australia with a range of challenges and opportunities to understand, explore, and resolve. A study by the Smart Energy Council<sup>1</sup> released in September 2018 identified 55 large-scale energy storage projects of which ~4800 MW planned, ~4000 MW proposed, ~3300 MW already existing or



The early detection and tracing of anomalous operations in battery packs are critical to improving performance and ensuring safety. This paper presents a data-driven approach for online anomaly detection in battery packs that uses real-time voltage and temperature data from multiple Li-ion battery cells. Mean-based residuals are generated for cell groups and evaluated using ???



A battery energy storage system (BESS) is a type of system that uses an arrangement of batteries and other electrical equipment to store electrical energy. This type of BESS container is then typically equipped with smoke detection, fire alarm panel, and some form of fire control and suppression system. URL: Firefighters bring large

# LARGE ENERGY STORAGE BATTERY DETECTION



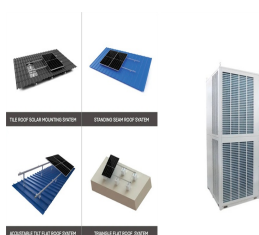
These battery energy storage systems usually incorporate large-scale lithium-ion battery installations to store energy for short periods. The systems are brought online during periods of low energy production and/or high demand. Their purpose is to increase the reliability of the grid and reduce the need for other drastic measures (such as rolling blackouts).



In large-scale energy storage systems, the early detection of faults in battery cells can prevent cascading failures and optimize storage efficiency. Industrial and grid-scale applications: In industrial settings and grid-scale energy storage, batteries are essential for uninterrupted power supply and energy management.



Overcharging and runaway of lithium batteries is a highly challenging safety issue in lithium battery energy storage systems. Choosing appropriate early warning signals and appropriate warning schemes is an important direction to solve this problem. With a large number of energy storage containers on the market, as well as the pursuit of



The early detection and tracing of anomalous operations in battery packs are critical to improving performance and ensuring safety. This paper presents a data-driven approach for online ???



Lithium-ion batteries (LIBs) have been extensively used in electronic devices, electric vehicles, and energy storage systems due to their high energy density, environmental friendliness, and longevity. However, LIBs are sensitive to environmental conditions and prone to thermal runaway (TR), fire, and even explosion under conditions of mechanical, electrical, ???

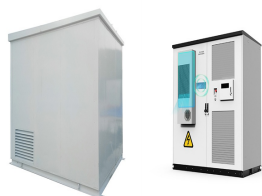
# LARGE ENERGY STORAGE BATTERY DETECTION



Batteries, integral to modern energy storage and mobile power technology, have been extensively utilized in electric vehicles, portable electronic devices, and renewable energy systems [[1], [2], [3]]. However, the degradation of battery performance over time directly influences long-term reliability and economic benefits [4, 5]. Understanding the degradation ???



eight energy storage site evaluations and meetings with industry experts to build a comprehensive plan for safe BESS deployment. BACKGROUND Owners of energy storage need to be sure that they can deploy systems safely. Over a recent 18-month period ending in early 2020, over two dozen large-scale battery energy storage sites around the



Unfortunately, there have been a large number of energy storage battery fires in the past few years. For example, (CF 3) 2), gaseous suppression agent 30 s after receiving a smoke detection signal from a Very Early Smoke Detection Apparatus (VESDA) laser-based smoke detection system (DNV???GL, 2020).



Over the past four years, at least 30 large-scale battery energy storage . sites (BESS) globally experienced failures that resulted in destructive . fires. 1. In total, more than 200 MWh were involved in the fires. For . context, roughly 12.5 GWh of globally installed cumulative battery energy storage capacity was operating in March 2021



However, with the need for more effective storage systems for renewable energy resources, lithium-ion battery energy storage systems have proven to be the most effective. The demand for such systems has grown fast and continues to increase rapidly. Lithium-ion storage facilities have high-energy batteries that contain flammable electrolytes.

# LARGE ENERGY STORAGE BATTERY DETECTION



Lithium-ion (Li-ion) batteries have been utilized increasingly in recent years in various applications, such as electric vehicles (EVs), electronics, and large energy storage systems due to their long lifespan, high energy density, and high-power density, among other qualities. However, there can be faults that occur internally or externally that affect battery ???



Lithium-ion batteries, with their high energy density, long cycle life, and non-polluting advantages, are widely used in energy storage stations. Connecting lithium batteries in series to form a battery pack can achieve the required capacity and voltage. However, as the batteries are used for extended periods, some individual cells in the battery pack may ???



Performance of the current battery management systems is limited by the on-board embedded systems as the number of battery cells increases in the large-scale lithium-ion (Li-ion) battery energy storage systems (BESSs). Moreover, an expensive supervisory control and data acquisition system is still required for maintenance of the large-scale BESSs. This paper ???



Battery energy storage systems (BESSs) rely on battery sensor data and communication. It is crucial to evaluate the trustworthiness of battery sensor and communication data in (BESS) since inaccurate battery data caused by sensor faults, communication failures, and even cyber-attacks can not only impose serious damages to BESSs, but also threaten the overall reliability of ???



There are serious risks associated with lithium-ion battery energy storage systems. Thermal runaway can release toxic and explosive gases, and the problem can spread from one malfunctioning cell



# LARGE ENERGY STORAGE BATTERY DETECTION

---



The proposed convolutional neural network (CNN)-based false battery data detection and classification (FBD 2 C) model could potentially improve safety and reliability of the BESSs. ???



Thermal runaway of single cells within a large scale lithium-ion battery is a well-known risk that can lead to critical situations if no counter measures are taken in today's lithium-ion traction batteries for battery electric vehicles (BEVs), plug-in hybrid electric vehicles (PHEV) and hybrid electric vehicles (HEVs). The United Nations have published a draft global ???



Mitigating Hazards in Large-Scale Battery Energy Storage Systems  
January 1, 2019 Hazard Assessment of Lithium Ion Battery Energy Storage Systems. February 2016. 3 Underwriters Laboratory. UL 9540 Standard for Energy Storage Systems and Equipment. 4 Underwriters Laboratory. UL 9540A Test Method.