

LEBANON ELECTRIC SHAZHOU POWER STORAGE



The potential for growth in energy storage technologies is immense, given the increasing demand for efficient and reliable energy systems worldwide. 2. KEY PLAYERS IN SUZHOU'S ENERGY STORAGE SCENE HIKVISION ENERGY. A notable figure in the energy storage arena of Suzhou is Hikvision Energy, a subsidiary of one of China's leading technology



In 2022 and 2023, Primesouth Lebanon, a company responsible for the operation and maintenance of power plants, responded to the government repeatedly stalling payments by taking the drastic step of shutting down two of EDL's major power plants, cutting off the entire state power supply.



A novel approach has been introduced to assess the significance of long-duration energy storage technologies (LDS) in terms of their energy and power capacity. This method explores the ???



The Deir Ammar and Zahrani power stations shut down in quick succession over the weekend after fuel ran out, leaving Lebanon's population of more than 6.8 million people without public power.



On average, Lebanon, NH residents spend about \$232 per month on electricity. That adds up to \$2,784 per year.. That's roughly equal to the national average electric bill of \$2,796. The average electric rates in Lebanon, NH cost 25 ¢/kilowatt-hour (kWh), so that means that the average electricity customer in Lebanon, NH is using 911.00 kWh of electricity per ???

LEBANON ELECTRIC SHAZHOU POWER STORAGE



The electricity sector in Lebanon is notoriously dysfunctional, suffering from supply shortages for decades. Peak demand is 1.5 gigawatts (GW) or 219.78 megawatts (MW) per million inhabitants, higher than generation capacity. 1 In comparison, the power deficit in India, where over 1 billion people live, was 1.2 GW in 2019/2020, or 0.9 MW per million ???



State Grid Suzhou Power Supply powering green energy revolution in Suzhou. and built pilot stations for distributed photovoltaic plus energy storage. In accordance with the construction of photovoltaic power stations on mountain tops, water surfaces, rooftops and in agricultural areas, the company worked together with the government to



Staff members from State Grid Suzhou Power Supply Company at work at Anhui Nantai Plastic Industry. [Photo provided to chinadaily .cn] On Thursday, staff members from State Grid Suzhou Power Supply Company provided guidance to equipment manufacturers in the construction of the distributed energy storage project, which was launched by Anhui Nantai ???



All of them feature on high power output for industrial electric tools use, big capacity power for electronic car and consuming devices powering. In 2021,LKPOWER will launch innovative energy storage products with a wider range of applications to meet the electricity demand of more segments and markets. R& D strength in portable products.



The State Grid Suzhou Power Supply, with the aim to better serve the development of new energy, is organizing power supply service personnel to enter new energy enterprises for equipment operation

LEBANON ELECTRIC SHAZHOU POWER STORAGE



Lebanon has been left without electricity, plunging the country into darkness amid a severe economic crisis. A government official told Reuters news agency the country's two largest power stations



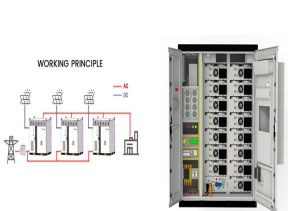
On August 27, the construction of the Langshan 10MW/97.312MWh Energy Storage Project of Jilin Electric Power Co., Ltd. started. The project is invested by Jidian Taineng (Zhejiang) Smart Energy Co., Ltd., and constructed by Changxing Taihu Nenggu Technology Co., Ltd. and Zhejiang Changxing Electric



With an area of 20 000 square meters workshop, its production capacity can be 1 million to 1.2 million packs. Dongguang Chilee devote itself to create one most excellent light power battery production line in the near future 2-3 years, and make it as the first class light power lithium battery suppliers in China.

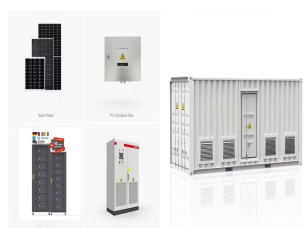
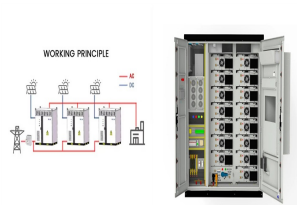
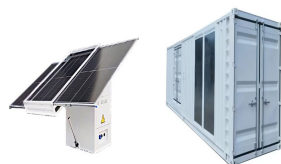


Hydro-electric power storage plants that require man-made dams to produce energy can cost billions of dollars to construct, although they can store significantly more energy than 100MW. The largest hydro storage plant in the world is the Bath County Pumped Storage Station in Virginia, US, which cost \$1.6bn in 1985 and has a storage capacity of



The City of Lebanon owns and operates its own electric utility containing generation, transmission and distribution facilities. The City's daily demand is met through the purchase of bulk power from American Electric Power (AEP). This allows the City to leverage the buying power and generation capabilities of a large utility, while

LEBANON ELECTRIC SHAZHOU POWER STORAGE



Lebanon's power production earlier ranged between 1,600 and 2,000 megawatts daily, but the fuel shortage in recent years has gradually reduced production to unprecedentedly low levels. *Writing by

On November 16, Fujian GW-level Ningde Xiapu Energy Storage Power Station (Phase I) of State Grid Times successfully transmitted power. The project is mainly invested by State Grid Integrated Energy and CATL, which is the largest single grid-side standalone station-type electrochemical energy storage power station in China so far.

HISEN is dedicated in advanced battery storage products and integrated energy storage solutions for residential customers. We are keen to provide efficient, low-cost, clean energy, in order to improve the reliability and resilience of the regional electric grid. HISEN targets at top brand and will make every effort to be one of the top international energy solution suppliers.

The North America and Western Europe (NAWE) region leads the power storage pipeline, bolstered by the region's substantial BESS segment. The region has the largest share of power storage projects within our KPD, with a total of 453 BESS projects, seven CAES projects and two thermal energy storage (TES) projects, representing nearly 60% of the global ???

With the large-scale access of renewable energy sources such as wind and light to the power grid, it is difficult to accept high-ratio renewable energy generation by the regulation capability of limited thermal power units, and the artificially introduced flexible resources such as energy storage play an increasingly significant role.

LEBANON ELECTRIC SHAZHOU POWER STORAGE



Sep 27 - Jiangsu Electric Power Construction No.1 Engineering Company Limited (JEPC1), a subsidiary of China Energy Engineering Corporation (CEEC), announced it has won the contract to construct Unit 3 of Zhangjiagang Shazhou power plant. The work will be completed as part of a phase II expansion project of the 2,000 megawatt (MW) plant.



RCT Power's EPZ factory in China's Jiangsu province has achieved a significant milestone by becoming the energy storage industry's first "Zero Carbon Factory", the facility having successfully completed all green certification procedures and officially received the Zero Carbon Factory certificate from T?V Rheinland Greater China.



OVERVIEW OF LEBANON COMMUNITY POWER Lebanon Community Power is a program authorized under RSA 53:E to provide electricity supply service for the ity's residents, businesses, and other types of customers. Providing electricity supply involves being responsible for procuring electric generation (supply) to match customer



State Grid Hunan Comprehensive Energy Service is a joint venture (JV) of state-owned power provider State Grid Hunan Electric Power Company and State Grid Comprehensive Energy Group. The four contracts are for 22.5MW / 45MWh of energy storage capacity in Chenzhou, 7.5MW / 15MWh in Loudi, 20MW / 40MWh in Yongzhou and 10MW / 20MWh in ???

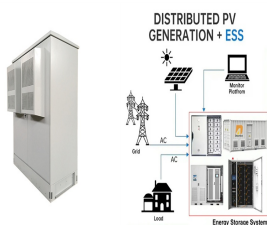


This 2 x 1,000 MW ultra-supercritical coal-fired power plant is one of the three "establish first and then reform" projects to provide a clean, efficient and supportive power supply to Jiangsu province. The power station would be on the southwest side ???

LEBANON ELECTRIC SHAZHOU POWER STORAGE



Zhangjiagang Shazhou Electric POWER Co Ltd [100%] Wintime ENERGY Group Co Ltd [80.0%]; Zhangjiagang State Owned Capital Investment Group Co Ltd [20.0%] Background. The two existing coal-fired units of Zhangjiagang Shazhou power station, totaling 1,260 MW, were brought online in 2006. The plant is majority owned by Wintime Energy.



Empower your strategies with our Zhangjiagang Shazhou Power Plant report and make more profitable business decisions. Note: This is an on-demand report that will be delivered upon request. The report will be delivered within 2 to 3 business days of the purchase, excluding weekends and holidays. Certain sections of the report may be removed or