

# LITHIUM BATTERY FOR HOUSE MOLDOVA



Temperature is a critical aspect of lithium battery storage. These batteries are sensitive to extreme conditions, both hot and cold. The ideal temperature range for lithium battery storage is 20°C to 25°C (68°F to 77°F). This temperature range helps to maintain the battery's chemical stability and avoids rapid aging.



-Long Life Cycle: DC HOUSE lithium iron phosphate battery (LiFePO<sub>4</sub>) can be recharged more than 4000 times in a deep cycle to achieve a longer cycle life. More than 10 times higher than lead-acid batteries (generally only 300-400 cycles can be charged). -100% Protection: Built-in BMS(Battery Management System) protects the cell from getting damaged like overcharge, ???



Buy DC HOUSE 12V 200Ah (2 Pack) LiFePO<sub>4</sub> Lithium Battery, Upgraded 100A BMS, 15-Year Lifespan with Up to 15000 Cycles Max. Perfect for RV, Solar, Trolling Motor, Home Energy Storage -DELIVERY in 2 PARCELS: Coin & Button Cell - Amazon FREE DELIVERY possible on eligible purchases



DC House 48V 50Ah Deep Cycle LiFePO<sub>4</sub> Lithium Battery 40% off. Thread starter Solar Guppy; Start date Dec 2, 2024; Prev. 1; 2; First Prev 2 of 2 Go to page. Go. D. Doug864 LITHINENG 48V 50AH Lithium Battery Metal Case, 2 Pack LiFePO<sub>4</sub> \$499 for two Solar Guppy; Nov 26, 2024; Online Deals to Share with Others; Replies 18 Views 1K. Dec 8, ???

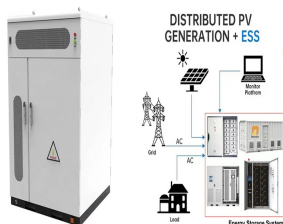


Last update on 2024-12-18 / Affiliate links / Images from Amazon Product Advertising API. Best 12 Volt RV Lithium Battery Reviews & Info 1. Battle Born LiFePO<sub>4</sub> Deep Cycle Lithium Battery

# LITHIUM BATTERY FOR HOUSE MOLDOVA



Buy DC HOUSE 24V 100Ah LiFePO4 Lithium Battery, Rechargeable with Over 4000+ Deep Cycles and BMS Protection for Solar System, Motorhome, Boat, Household, Solar Panel Set and Camping: Batteries - Amazon FREE ???



About this item . Light Weight and Mini in Size: DC HOUSE lithium iron phosphate battery provides 1280 Wh full energy output, only 30% of the weight and 45% of the size of lead-acid batteries., easy to move and install, energy density of 57 WH/Lb, is the perfect replacement for SLA/AGM batteries, our battery life is up to 10 years, life cycle up to more ???



From backup power to bill savings, home energy storage can deliver various benefits for homeowners with and without solar systems. And while new battery brands and models are hitting the market at a furious pace, the best solar batteries are the ones that empower you to achieve your specific energy goals. In this article, we'll identify the best solar batteries in ???



???????,???? ?????????????u?????, ?, ?????????? 1/4 ???>????? 3/4  
 ????? ?? ??? 3/4 ?????????????? 3/4 ?? ??? 3/4 ?????u?? ??? 3/4 ?>????  
 3/4 ???u. ?-? ??????>?,??? 1/2 ???u ???u? 1/2 ?? . ?-? ???



DC HOUSE 12V 12Ah LiFePO4 Lithium Battery with 15A BMS, 10 Year Lifespan, 10000+ Cycles, for Marine, Ride on Toy, Trolling Motor Fish Finder, Kayak, Power Wheels, Pride Go Go Mobility Scooters . Visit the DC HOUSE Store. 4.3 4.3 out of 5 stars 207 ratings | Search this page .

# LITHIUM BATTERY FOR HOUSE MOLDOVA



48V 100AH Lithium Battery: 48V 100AH Lithium Battery powered by A-grade cells, providing superior energy density and stable performance. It can be used for more than 4000 cycles. Operating temperature range: charging 0~55???, discharging: -20~55???; temperature protection.



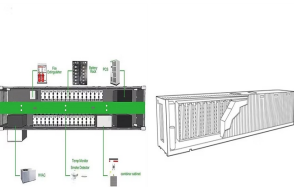
2- Enter the battery voltage. It'll be mentioned on the specs sheet of your battery. For example, 6v, 12v, 24, 48v etc. 3- Optional: Enter battery state of charge SoC: (If left empty the calculator will assume a 100% charged battery). Battery state of charge is the level of charge of an electric battery relative to its capacity.



DC HOUSE lithium iron phosphate battery (LiFePO4) can be recharged more than 4000 times in a deep cycle to achieve a longer cycle life. -Powerful Output: With a substantial 1280Wh capacity, 100ah lithium battery can power four trolling motors simultaneously for an extended duration. It supports multiple charging methods, including Type-C



Buy DC HOUSE 24V 100Ah LiFePO4 Lithium Battery, Rechargeable with Over 4000+ Deep Cycles and BMS Protection for Solar System, Motorhome, Boat, Household, Solar Panel Set and Camping: Batteries - Amazon FREE DELIVERY possible on eligible purchases



Buy DC HOUSE 12V 100Ah LiFePO4 Lithium Battery, Bluetooth & Low Temp Protection, Group 31 Lithium Battery, Up to 15000 Cycles, 100A BMS, Perfect for Trolling Motors, Marine, Boat, Solar: Batteries - Amazon FREE DELIVERY possible on eligible purchases



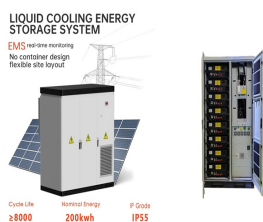
A lithium-ion or Li-ion battery is a type of rechargeable battery that uses the reversible intercalation of Li + ions into electronically conducting solids to store energy. In comparison with other commercial rechargeable batteries, Li-ion batteries are characterized by higher specific energy,

# LITHIUM BATTERY FOR HOUSE MOLDOVA

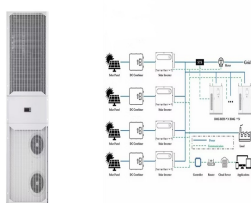
---

higher energy density, higher energy efficiency, a longer cycle life, and a longer ???

# LITHIUM BATTERY FOR HOUSE MOLDOVA



ICOttec C4 Power House Rechargeable Lithium Battery ONLY. The C4 Power House was designed exclusively for the ICOttec Outlaw, Night Stalker & Sabre Electronic Game Callers. 14.8 Volts 3700 mAh 54.8Wh 30-40 hours run time approximately\* Charger NOT included \*Battery consumption rate will vary based on; the volume, if Moldova (MDL L) Monaco



(u/? X????`+1 ? ?? z l?D????????? ?4ss"u? D ????? 3/4 ? ^h } Dq???x ? :L  
 ??? ? "??, z????????? " ?B?B? ? ?? " l ? 1/2 wss(R)??\_???d???uQ.? ?;  
 (R)???a?.JaeS-? ?"7h IBSr p/"J??j?????f"???????,??9?S? ?) ?????L<????  
 ??"V? 1/2 C"6O0????????[????J? ?v?g?> 1/2 (C)?9???????,?80?; ?1  
 Y??F%???eZY?f? 3/4 =??u?,C????{ k??Y



Batterie lithium LiFePO4 12V 100Ah, BMS 100A int?gr?, jusqu"? 15000 cycles. Explorez DC HOUSE. Notre service. Notre ?quipe. Notre histoire. Production. Nos clients. Notre service. Notre ?quipe. Notre histoire. Production. Nos clients. Aper?u des batteries. 3 choses que vous devez savoir avant de passer du plomb au LifePo4.

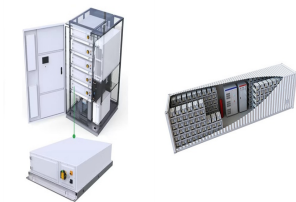


DC House 4 Amp 12V Lithium Battery Charger 4 Amp 14.6V Automatic Smart with Automatic BMS Activation Maintenance for Deep Cycle Battery Car Motorcycle Marine. \$19.99 \$ 19. 99. Get it as soon as Tuesday, Aug 13. Only 2 left in stock - order soon. Sold by DC HOUSE - US and ships from Amazon Fulfillment. +



Without a home battery, the solar energy produced in the daytime would be wasted. A home battery allows you to store solar energy and use it whenever you need it. Cut back on your electricity bills. By fully using your solar energy, you will significantly cut back on ???

# LITHIUM BATTERY FOR HOUSE MOLDOVA



ICOTec C4 Power House Rechargeable Lithium Battery ONLY. The C4 Power House was designed exclusively for the ICOTec Outlaw, Night Stalker & Sabre Electronic Game Callers. 14.8 Volts 3700 mAh 54.8Wh 30-40 hours run time ???



ICOTec C4 Power House Rechargeable Lithium Battery & Charger. The C4 Power House was designed exclusively for the ICOTec Outlaw & Night Stalker Electronic Game Callers. 14.8 Volts 3700 mAh 54.8Wh 30-40 hours run time approximately\* Charger included \*Battery consumption rate will vary based on; the volume, if co Moldova (MDL L) Monaco (EUR



FRYEBURG (WGME)-- A Fryeburg family has a warning for others after they say a lithium-ion battery suddenly caused a fire inside their home. These things are everywhere, from your phone to



You'll have a "chassis" (or "start/starting") battery and a "house" battery (or batteries). If you have a travel trailer or 5th wheel (an RV with no engine, that you tow), then you'll only have a house battery bank. Let's briefly look at the difference between RV chassis batteries and RV house batteries. Chassis Batteries



1 ? FCL signed its second distribution agreement, focused on FCL-X??? in bulk form with world renowned US Fire Pump, a USA based industrial fire solutions company; US Fire Pump deployed and validated FCL-X??? unique effectiveness in fighting dangerous, toxic and hard to control lithium-ion battery fires ; TORONTO, Dec. 20, 2024 /PRNewswire/ - Full Circle Lithium ???

# LITHIUM BATTERY FOR HOUSE MOLDOVA

---



Lithium iron phosphate (LFP or  $\text{LiFePO}_4$ ) had the highest stability and lowest thermal runaway risk. Remember, when buying a rechargeable battery-powered device, the more expensive  $\text{LiFePO}_4$  have no reported issues. CyberShack will happily review larger devices using these. The first step is to identify battery types with different risk profiles.