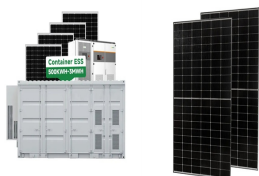


LITHIUM-ION BATTERY PACK ENERGY STORAGE



What are lithium ion batteries? Lithium-ion batteries (LIBs) have nowadays become outstanding rechargeable energy storage devices with rapidly expanding fields of applications due to convenient features like high energy density, high power density, long life cycle and not having memory effect.



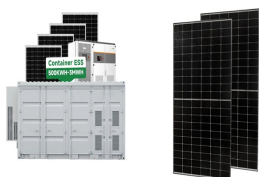
What are lithium-ion batteries used for? Not only are lithium-ion batteries widely used for consumer electronics and electric vehicles, but they also account for over 80% of the more than 190 gigawatt-hours (GWh) of battery energy storage deployed globally through 2023.



Are lithium-ion batteries energy efficient? Among several battery technologies, lithium-ion batteries (LIBs) exhibit high energy efficiency, long cycle life, and relatively high energy density. In this perspective, the properties of LIBs, including their operation mechanism, battery design and construction, and advantages and disadvantages, have been analyzed in detail.

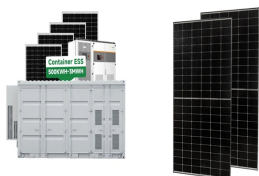


Can lithium-ion battery storage stabilize wind/solar & nuclear? In sum, the actionable solution appears to be 8 h of LIB storage stabilizing wind/solar + nuclear with heat storage, with the legacy fossil fuel systems as backup power (Figure 1). Schematic of sustainable energy production with 8 h of lithium-ion battery (LIB) storage. LiFePO₄/graphite (LFP) cells have an energy density of 160 Wh/kg (cell).



Can batteries be used in grid-level energy storage systems? In the electrical energy transformation process, the grid-level energy storage system plays an essential role in balancing power generation and utilization. Batteries have considerable potential for application to grid-level energy storage systems because of their rapid response, modularization, and flexible installation.

LITHIUM-ION BATTERY PACK ENERGY STORAGE



Are lithium-ion batteries critical materials? Given the reliance on batteries, the electrified transportation and stationary grid storage sectors are dependent on critical materials; today's lithium-ion batteries include several critical materials, including lithium, cobalt, nickel, and graphite.¹³ Strategic vulnerabilities in these sources are being recognized.



China has been developing the lithium ion battery with higher energy density in the national strategies, e.g., the "Made in China 2025" project [7]. Fig. 2 shows the roadmap of the lithium ion battery for EV in China. The goal is to reach no less than 300 Wh/kg in cell level and 200 Wh/kg in pack level before 2020, indicating that the total range of an electric car



This document outlines a U.S. national blueprint for lithium-based batteries, developed by FCAB to guide federal investments in the domestic lithium-battery manufacturing value chain that will



In order to enrich the comprehensive estimation methods for the balance of battery clusters and the aging degree of cells for lithium-ion energy storage power station, this paper proposes a state-of-health estimation and prediction method for the energy storage power station of lithium-ion battery based on information entropy of characteristic data. This method



Microvast is vertically integrated with absolute control from the R&D process to the manufacturing of our battery packs and energy storage systems (ESS), including core battery chemistry (cathode, anode, electrolyte, and separator). With established manufacturing worldwide, we can provide the right lithium-ion battery solutions to meet the

LITHIUM-ION BATTERY PACK ENERGY STORAGE



Nissan Leaf's lithium-ion battery pack. Lithium-ion batteries may have multiple levels of structure. Small batteries consist of a single battery cell. In 2016, an LFP-based energy storage system was chosen to be installed in Paiyun Lodge on Mt.Jade (Yushan) (the highest lodge in Taiwan). As of June 2024, the system was still operating safely.



The safety accidents of lithium-ion battery system characterized by thermal runaway restrict the popularity of distributed energy storage lithium battery pack. An efficient and safe thermal insulation structure design is critical in battery thermal management systems to prevent thermal runaway propagation.



Fire incidents in energy storage stations are frequent, posing significant firefighting safety risks. To simulate the fire characteristics and inhibition performances by fine water mist for lithium-ion battery packs in an energy-storage cabin, the PyroSim software is used to build a 1:1 experimental geometry model of a containerized lithium-ion energy storage cabin.



Tehachapi Energy Storage Project, Tehachapi, California. A battery energy storage system (BESS) or battery storage power station is a type of energy storage technology that uses a group of batteries to store electrical energy. Battery storage is the fastest responding dispatchable source of power on electric grids, and it is used to stabilise those grids, as battery storage can ???



Batteries have considerable potential for application to grid-level energy storage systems because of their rapid response, modularization, and flexible installation. Among ???

LITHIUM-ION BATTERY PACK ENERGY STORAGE



Energy Storage Program Pacific Northwest National Laboratory Current Li-Ion Battery Improved Li-Ion Battery Novel Synthesis New Electrode Candidates Coin Cell Test Stability and Safety Full Cell Fabrication and Optimization Lithium-ion (Li-ion) batteries offer high energy and power density, making them popular



Modular battery energy storage system design factors analysis to improve battery-pack reliability. Author links open overlay panel X. Dorransoro, E A reliability-based design concept for lithium-ion battery pack in electric vehicles. Reliab. Eng. Syst. Saf., 134 (2015), pp. 169-177, 10.1016/j.ress.2014.10.010. View PDF View article View in



Among numerous forms of energy storage devices, lithium-ion batteries (LIBs) have been widely accepted due to their high energy density, high power density, low self-discharge, long life and not having memory effect [1], [2] the wake of the current accelerated expansion of applications of LIBs in different areas, intensive studies have been carried out ???



Unlike traditional power plants, renewable energy from solar panels or wind turbines needs storage solutions, such as BESSs to become reliable energy sources and provide power on demand [1]. The lithium-ion battery, which is used as a promising component of BESS [2] that are intended to store and release energy, has a high energy density and a long energy ???



The global economy is experiencing a transition from carbon-intensive energy resources to low-carbon energy resources. Lithium-ion batteries are the most favourable electrochemical energy storage system for electric vehicles and energy storage systems due to their high energy density, excellent self-discharging rate, high operation voltage, long cycle life, and no memory effect.

LITHIUM-ION BATTERY PACK ENERGY STORAGE



The voltage safety window depends on the chemistry of the battery, for example, a lithium-ion battery with LiFePO₄ cathode and graphite anode has a maximum charge voltage of 3.65 V and a minimum discharge voltage of 2.5 V, but with a LiCoO₂ cathode, the maximum charging voltage is 4.2 V and the minimum discharge voltage is 3.0 V.



Here, we focus on the lithium-ion battery (LIB), a "type-A" technology that accounts for >80% of the grid-scale battery storage market, and specifically, the market-prevalent battery chemistries using LiFePO₄ or LiNi_xCo_yMn_{1-x-y}O₂ on Al foil as the cathode, graphite on Cu foil as the anode, and organic liquid electrolyte, which



TCM40/EG melts at 35.2 °C and decomposes within the range of 87.1-112 °C, providing a significant thermal energy storage capacity of 1276 kJ/kg. Therefore, it is efficient ??



Calculation of battery pack capacity, c-rate, run-time, charge and discharge current Battery calculator for any kind of battery : lithium, Alkaline, LiPo, Li-ION, Nimh or Lead batteries . Enter your own configuration's values in the white boxes, results are displayed in the green boxes.



As a key component of EV and BES, the battery pack plays an important role in energy storage and buffering. The lithium-ion battery is the first choice for battery packs due to its advantages such as long cycle life [3], high voltage platform [4], low self-discharge rate [5], and memory-free effect [6].

LITHIUM-ION BATTERY PACK ENERGY STORAGE



Which Home Battery Is Right for Me? While battery technology is still in its infancy, a breakthrough came with lithium-ion batteries. These batteries???the same kind found in cell phones and many other devices???capture energy from solar panels as direct current (DC) and convert it through an inverter to alternative current (AC), the kind used in American homes.



Developed by Battery and Emergency Response Experts, Document Outlines Hazards and Steps to Develop a Robust and Safe Storage Plan. WARRENDALE, Pa. (April 19, 2023) ??? SAE International, the world's leading authority in mobility standards development, has released a new standard document that aids in mitigating risk for the storage of lithium-ion ???



Purpose Lithium-ion (Li-ion) battery packs recovered from end-of-life electric vehicles (EV) present potential technological, economic and environmental opportunities for improving energy systems and material efficiency. Battery packs can be reused in stationary applications as part of a "smart grid", for example to provide energy storage systems (ESS) for ???



If you are looking for a customized lithium battery pack for your project, EGbatt ENERGY can help. We offer free design and manufacturing services for 12V, 24V, 36V, 48V, 72V, and 96V battery packs with high discharge capability. Our battery packs are equipped with top-grade lithium-ion cells and qualified BMS to ensure safety and reliability.



To ensure the safety of energy storage systems, the design of lithium???air batteries as flow batteries also has a promising future. 138 It is a combination of a hybrid electrolyte lithium???air battery and a flow battery, which can be divided into two parts: an energy conversion unit and a product circulation unit, that is, inclusion of a

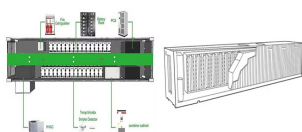
LITHIUM-ION BATTERY PACK ENERGY STORAGE



The lithium-ion battery pack of EVs is usually assembled from multiple battery modules. A battery module is a collection of multiple battery cells, usually connected in series and parallel. At present, there are mainly three types of lithium-ion battery cell: cylindrical cell, pouch cell and prismatic cell [60].



And recent advancements in rechargeable battery-based energy storage systems has proven to be an effective method for storing harvested energy and subsequently releasing it for electric grid applications. 2-5 Importantly, since Sony commercialised the world's first lithium-ion battery around 30 years ago, it heralded a revolution in the battery



The installed capacity of battery energy storage systems (BESSs) has been increasing steadily over the last years. These systems are used for a variety of stationary applications that are commonly categorized by their location in the electricity grid into behind-the-meter, front-of-the-meter, and off-grid applications [1], [2] behind-the-meter applications ???



A battery energy storage system (BESS) is an electrochemical device that charges (or collects energy) from chemistries are available or under investigation for grid-scale applications, including lithium-ion, lead-acid, redox flow, and molten salt (including sodium-based chemistries). 1. Battery chemistries differ in key technical



With the increasing use of lithium-ion batteries in automotive-type applications, a need for recommendations on how to store lithium-ion batteries has been identified due to ???