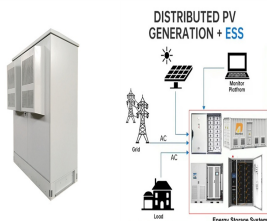


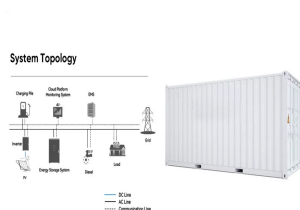
LITHIUM SLURRY BATTERY ENERGY STORAGE SYSTEM



Recently, the lithium-ion (Li-ion) battery has become a popular energy storage technology for many sustainable energy applications, such as transportation electrification (Su et al., 2011; Chen et al., 2016) and a smart grid (Chen and Su, 2018; Hu et al., 2020; Hu et al., 2021a), due to the advantages of a low discharge rate and high energy



Thus, there is an urgent need for large-scale electrochemical energy storage (EES) technology. [1][2][3][4][5][6][7] [8] Lithium slurry battery (LSB) combines the characteristics of lithium-ion



The aqueous lithium-ion slurry flow batteries achieve nearly 100% Coulombic efficiency, long cycling life, high safety, and low system cost, holding great promise for large-scale energy storage applications.



DOI: 10.1016/j.jpowsour.2020.229319 Corpus ID: 230577193;
Single-component slurry based lithium-ion flow battery with 3D current collectors @article{Chen2021SinglecomponentSB,
title={Single-component slurry based lithium-ion flow battery with 3D current collectors}, author={Hongning Chen and Yao Liu and Xuefeng Zhang ???



Slurry based lithium-ion flow battery has been regarded as an emerging electrochemical system to obtain a high energy density and design flexibility for energy storage. The coupling nature of electrode thickness and flow resistance in previous slurry flow cell designs, demands a nuanced balance between power output and auxiliary pumping.

LITHIUM SLURRY BATTERY ENERGY STORAGE SYSTEM



Lithium slurry battery is a new type of energy storage technique which uses the slurry of solid active materials, conductive additions and liquid electrolyte as the electrode.



Conventional energy storage systems, such as pumped hydroelectric storage, lead-acid batteries, and compressed air energy storage (CAES), have been widely used for energy storage. However, these systems face significant limitations, including geographic constraints, high construction costs, low energy efficiency, and environmental challenges.



Fig. 4 shows the specific and volumetric energy densities of various battery types of the battery energy storage systems [10]. Download: Download high-res image In Fig. 23, a flowchart detailing their suggested method for problem identification in a lithium-ion battery system [108]. The BMS runs a battery parameter estimation suite of



An electrochemical technology called a semi-solid flow battery can be a cost-competitive form of energy storage and backup for variable sources such as wind and solar, finds an interdisciplinary team from MIT. The battery uses dispersed manganese dioxide particles, along with carbon black.



Lithium slurry flow cell (LSFC) is a novel energy storage device that combines the concept of both lithium ion batteries (LIBs) and flow batteries (FBs). 2020, Kyocera Corporation and 24M announced that Kyocera has formally launched its residential energy storage system, Enerezza, the world's first system built using 24M's novel SemiSolid

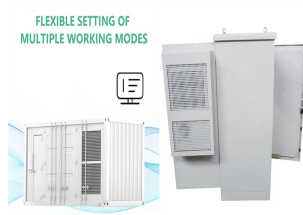
LITHIUM SLURRY BATTERY ENERGY STORAGE SYSTEM



There are different energy storage solutions available today, but lithium-ion batteries are currently the technology of choice due to their cost-effectiveness and high efficiency. Battery Energy Storage Systems, or BESS, are rechargeable batteries that can store energy from different sources and discharge it when needed. BESS consist of one or



The rising demands on low-cost and grid-scale energy storage systems call for new battery techniques. Herein, we propose the design of an iconoclastic battery configuration by introducing solid Li-storage chemistry into aqueous redox flow batteries. By dispersing tiny-sized Li-storable active material particulates and conductive agents into high-salinity aqueous ???



Semi-solid lithium slurry battery is an important development direction of lithium battery. It combines the advantages of traditional lithium-ion battery with high energy density and the flexibility and expandability of liquid flow battery, and has unique application advantages in the field of energy storage.



storage systems, and aviation, as well as for national defense . uses. This document outlines a U.S. national blueprint for lithium-based batteries, developed by FCAB to guide federal investments in the domestic lithium-battery manufacturing value chain that will decarbonize the transportation sector



Opportunities and challenges for using carbon slurry electrodes in energy storage systems. Slurry-based electrochemical energy storage could replace battery energy storage technologies with their relatively high and capacitance due to EDLC was 28.3 ~ 189.4 F. g ???1, which is appreciable compared to MH or lithium polymer-based H-storage.

LITHIUM SLURRY BATTERY ENERGY STORAGE SYSTEM



Battery Energy Storage Systems (BESS) are pivotal technologies for sustainable and efficient energy solutions. This article provides a comprehensive exploration of BESS, covering fundamentals, operational mechanisms, benefits, limitations, economic considerations, and applications in residential, commercial and industrial (C& I), and utility ???



The lithium anode in Li-S BSBs may affect the battery system's overall performance because there is almost no external pressure on it during battery operation, leading to dendrites growth and



Kyocera has officially launched a residential energy storage system using an advanced manufacturing process that supplier 24M claims can reduce some of the key costs of lithium battery making by as much as 50%. The Japanese company's new product, Enerezza, is aimed at the booming market in its homeland and is available in 5kWh, 10kWh and



Lithium-ion batteries are still useful for battery energy storage systems even after they have degraded and become inadequate for EVs, and their reuse is increasing in the field of battery energy storage systems. To achieve such systems with reused lithium-ion batteries, accurate identification of battery



Lithium slurry redox flow batteries (SRFBs) are a promising candidate for scalable energy storage systems. The section is one of the most basic elements of the flow field. The battery performance optimization based on the section reconstruction is helpful to improve the flow distribution of active particle suspensions in flow channel, reduce

LITHIUM SLURRY BATTERY ENERGY STORAGE SYSTEM



A battery energy storage system (BESS) is an electrochemical device that charges (or collects energy) from. Several battery chemistries are available or under investigation for grid-scale applications, including lithium-ion, lead-acid, redox flow, and molten salt (including sodium-based chemistries). 1. Battery chemistries differ in key



Lithium slurry flow cell (LSFC) is a novel energy storage device that combines the concept of both lithium ion batteries (LIBs) and flow batteries (FBs). Although it is hoped to ???



Lithium slurry flow cell (LSFC) is a novel energy storage device that combines the concept of both lithium ion batteries (LIBs) and flow batteries (FBs). Although it is hoped to inherit the advantages of both LIBs and FBs, such as high energy density, ease of fabrication, environmental friendly, independent energy and power density, to name but a few.



At present, the main energy carriers of energy storage power stations are lithium/sodium-ion batteries, supercapacitors, flow batteries, flywheel energy storage systems, and compressed air energy storage systems. Amongst them, lithium-ion battery occupies a major share due to the high energy density and relatively mature technology [1], [2], [3]

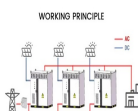


Rechargeable lithium-ion battery (LiB) cells have proven to be a powerful technology due to their considerable energy, power density and long cycle life [2]. According to the literature, the Li-ion battery market value is expected to increase from about \$34.2 billion in 2020 to \$87.5 billion in 2027 [3]. Advancement of technologies for

LITHIUM SLURRY BATTERY ENERGY STORAGE SYSTEM



A battery energy storage system (BESS) captures energy from renewable and non-renewable sources and stores it in rechargeable batteries (storage devices) for later use. A battery is a Direct Current (DC) device and when needed, the electrochemical energy is discharged from the battery to meet electrical demand to reduce any imbalance between



Semi-solid lithium slurry battery is an important development direction of lithium battery. It combines the advantages of traditional lithium-ion battery with high energy density and the flexibility and expandability of liquid flow battery, and has unique application advantages in the field of energy storage.

FLEXIBLE SETTING OF
MULTIPLE WORKING MODES



Redox flow batteries are promising for large-scale energy storage, but are hindered by cost, stability, and safety issues. Here the authors construct an all-polymer particulate slurry battery to



With the rapid development of electric vehicles and smart grids, the demand for battery energy storage systems is growing rapidly. The large-scale battery system leads to prominent inconsistency issues. This work systematically reviewed the causes, hazards, evaluation methods and improvement measures of lithium-ion battery inconsistency.



Moreover, grid-scale energy storage systems rely on lithium-ion technology to store excess energy from renewable sources, ensuring a stable and reliable power supply even during intermittent

LITHIUM SLURRY BATTERY ENERGY STORAGE SYSTEM



Semi-solid lithium slurry battery is an important development direction of lithium battery. It combines the advantages of traditional lithium-ion battery with high energy density and the flexibility and expandability of liquid flow battery, and has unique application advantages in the field of energy storage. In this study, the thermal stability of semi-solid lithium slurry battery ???