

# LOFENG GENERATOR VOLTAGE IS LOW



How to fix a low voltage generator? It is recommended to adjust the brush to the correct position or replace the brush to solve the problem of low voltage. Check the stator winding or field winding of the generator set for short circuit or ground fault, check the fault and clear it in time. Some rectifier diodes are broken and must be handled in time.



Can improper grounding cause low voltage output? Yes, improper grounding is the leading cause of generator low voltage output. Kashif has been a valuable asset to the electric generator industry for over 5 years. Now, As a skilled energy engineer, he has been on the front lines of diagnosing problems, fixing broken parts, and performing routine maintenance tasks to keep generators running smoothly.



What causes low voltage in a generator? When a generator supplies no voltage in its power outlets, it could be assumed to have been caused by some of the major factors such as burnt armature coils, Worn-out Armature Brush, AVR Flashing/burning, or disconnection along the power outlet line. This is one of the main Causes Of Low Voltage In Electric Power Generators.



What are the dangers of low voltage generators? The voltage-sensitive appliances may malfunction or melt down in the worst cases. Heavy motorized appliances like water pumps, refrigerators, air conditioners, etc. may not provide the desired output. Generator low voltages could not only hurt the efficiency of the appliances but also could harm them dangerously.



Is generator Low Voltage a silent killer? Generator low voltage is known as a silent killer for voltage-sensitive appliances like UPS, Chargers, refrigerators, Microwaves, etc. In worst cases, the low voltage could burn the ICS or inner organs of the appliances within no time.

# LOFENG GENERATOR VOLTAGE IS LOW



Can a generator withstand low voltage? They are frequently relied upon as a backup power supply during main power outages. However, any issues with their operation, such as producing low voltage, can be extremely detrimental, posing risks to both equipment and user safety. Generators cannot tolerate low voltage and we need to address it promptly.



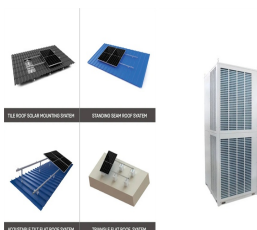
**Extra-Low Voltage.** Extra-low voltage is mostly harmless since it does not shock on touch. It's below 70 volts, and you may only get a mild shock if you touch the wires wet. Such a low voltage is used in medical equipment and phone chargers. **Low Voltage.** Low voltage is used in household appliances and generators. It ranges from 100 volts to



Ok so another update and further into the rabbit hole. So I had a 35 MFD cap ( spare for my AC ) so I figured let's try it. well, it boosted the voltage to near perfect 222 volts to 228 and L1 & L2 to N or G I got like 110 to 111 . but when I plugged the RV in every time the inverter blocked power and showed red LED on the power button ( like a fault but no fault code a?)

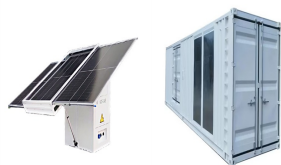


Some of the issues relating to a generator under-voltage include: How generators work; Under-voltage and other problems; If the warning light is on or the generator indicates that the voltage is too low, disconnect all the devices (the load) and check the readings again. If the problem is fixed, the generator is overloaded; if the problem

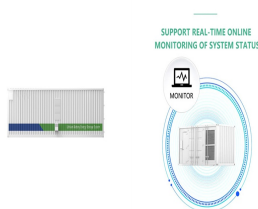


So, normally, generators either give a 120 (110-120) or 240 volts output. However, if it's a dual voltage generator, it can provide both the 120 and 240V output. The accepted formula for voltage output is Why would a generator put out low voltage? Any engine issue such as low engine oil, worn spark plugs, blocked air filters, clogged up

# LOFENG GENERATOR VOLTAGE IS LOW



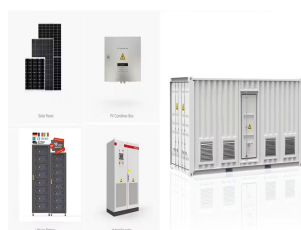
Understanding Generator Voltage Fluctuations: Generator voltage fluctuations refer to variations in the voltage output of the generator, which can occur intermittently or persistently. These fluctuations may manifest as sudden drops or spikes in voltage levels, impacting the performance and safety of connected appliances and equipment. Causes



Low voltage power generation also results in increase in the size of the generator and occupies larger space. When it is possible to provide insulation to a 400Kv transformer which steps up the generator voltage to 400kV why the generator voltage is limited based on insulation difficulty.??  
October 23, 2020 at 11:42 PM Unknown said



Reason 3. Loose or Corroded Connections. Another common cause of low voltage output is loose or corroded connections. The connections between the generator and the load, between the generator and the battery, or between the generator and the ground can become loose or corroded over time. This can increase the resistance and reduce the current flow, resulting in a?

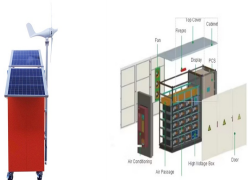


If the generator is not re-connectable (or only connectable for high/low voltage), you can still apply single phase loads to it as long as you do not go over the rated amps on an individual line. a?c The genset is limited by its electrical capacity based on the generator end and really does not have much to do with the engine.



Generators under voltage can be caused by a number of factors, most notably a decrease in the generator's input voltage. However, there are steps you can take to protect your generator from under-voltage damage. Generator under a?|

# LOFENG GENERATOR VOLTAGE IS LOW



When your generator has now or low voltage, it could be caused by the panel wiring, capacitor, alternator, or other parts. Find out how to troubleshoot this problem with our repair help.



Electrical devices and machinery are designed to operate within specific voltage ranges. When the voltage deviates too much from this range, it can cause equipment malfunction or damage. By maintaining a steady voltage output, generators with good voltage regulation help prevent such issues and ensure the smooth operation of electrical equipment.



Frequency Variation: Generators are designed to produce electricity at a specific frequency (usually 50Hz or 60Hz). Significant deviations in frequency can lead to voltage fluctuations. Environmental Factors: Extreme a?|



The voltage regulator controls the generator's output voltage. The generator cannot produce steady power if it becomes faulty, leading to low output. Have a technician test and, if necessary, replace the voltage regulator to maintain stable power production. Loose or Damaged Wiring. The wiring inside your generator connects all of its components.



The fault code UU is triggered when the generator voltage falls below the recommended level. For example, if a 20KVA generator drops its output to 10KVA, the Kohler generator's sensor will register this as an under-voltage fault. Possible Reasons for Code UU: AVR malfunction; Potentiometer problem; Rectifier problem; The generator is under speed.



The low voltage could be from a bad capacitor, bad diodes, bad connections at the brushes. You could even try connecting another capacitor across the brushes from the outside. One time we had to increase the capacitor on a 5 kw unit to give the generator enough field dc

# LOFENG GENERATOR VOLTAGE IS LOW

---

power to start a washing machine motor Hope this helps Don

# LOFENG GENERATOR VOLTAGE IS LOW



Dealing with Low Thermopile Voltage. Dealing with a low Honeywell thermopile voltage can be a real pain. It takes quite a bit of technical skill and know-how. You will need to invest in special tools and spend the better part of an a?|



2. Voltage Regulator Repair or Replacement: In the case of a faulty voltage regulator, consider consulting a qualified technician to repair or replace the regulator. They will have the expertise and tools required to handle this delicate component. 3. Addressing Wiring Issues: Repair or replace any damaged wiring connections or components. Ensure that all connections are a?|



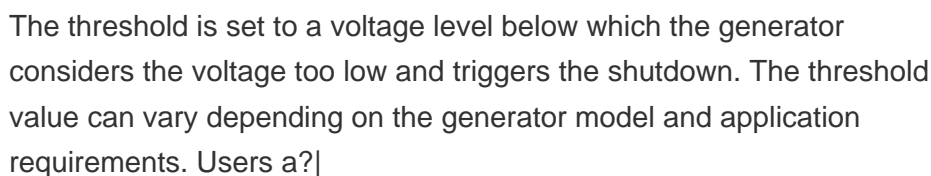
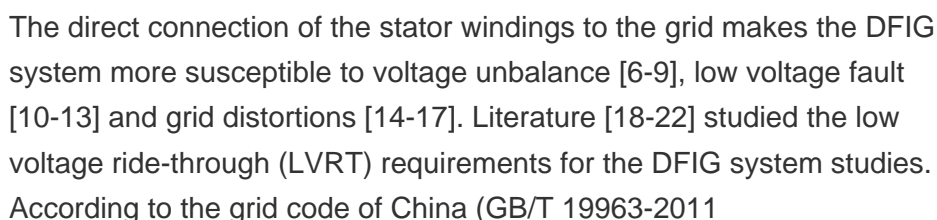
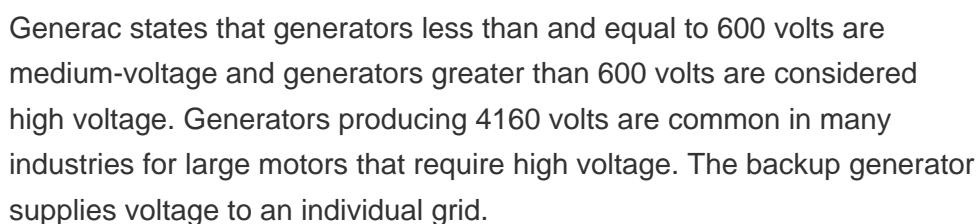
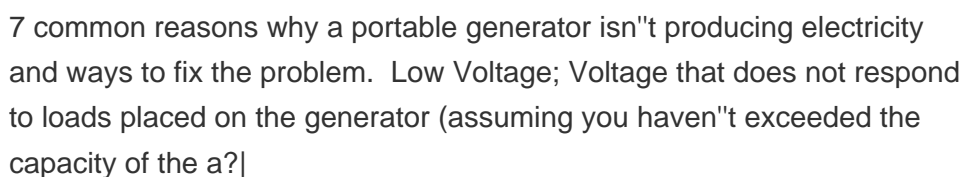
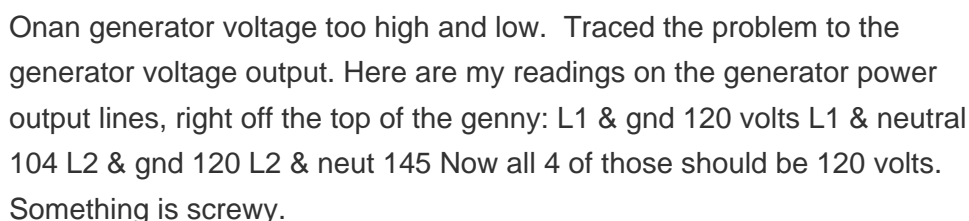
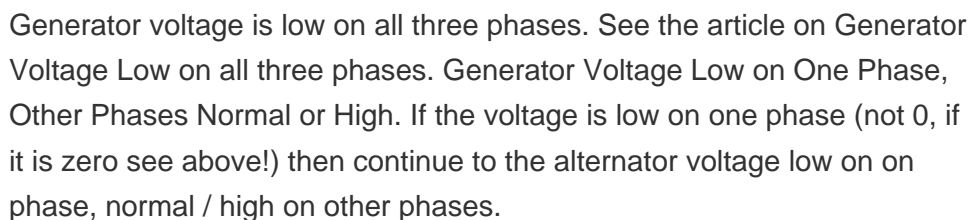
If your generators are not performing as well as they should be, a voltage drop might signify a problem. There are several causes of voltage drops a?? in most cases, repairing the generator is possible. Here, we discuss voltage drop a?|



What controls the generator voltage? The speed at which a conductor moves through a fixed magnetic field, and the strength of that field, affects the voltage output by the generator. Is a low voltage generator expensive to repair? This usually depends on what caused the low voltage in the first place. Sometimes, just removing some loads is fine.



When wired according to the centrion manual i get 126 vac one leg 50 Vac low idle, high idle i get 240 vac 1 leg and 70 Vac. And still no red light on the Vr. If i energize wire 4 as per generac wiring the voltage comes up. Some meters don't like generator voltage. If you can, get your hands on a Fluke True RMS meter.





# LOFENG GENERATOR VOLTAGE IS LOW



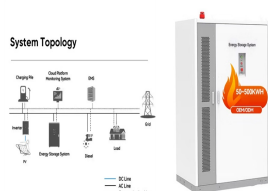
Low voltage on a generator can be caused by many things. This article looked at the most common reasons for low voltage on a generator. We also provided some tips to help you troubleshoot the issue and get your a?|



Troubleshooting low voltage output from a generator requires a comprehensive diagnostic process and proactive maintenance measures. By addressing internal faults and external influences, it is possible to correct the a?|



And if there is no voltage regulation (just a generator and we increase the load step by step), what would happen? generator; Share. Cite. Follow asked Nov 13, 2014 at 20:22. user16307 user16307. 12.2k 53 53 gold badges 192 192 silver badges a?|



Ron's generator will then slowly drop in RPM, going as low as about 4400 RPM, and if the load is kept on, the output voltage of course will also start dropping. (3 phase generator) : Red, white, blue wires. Assuming that the inverter works directly with the generator line voltage, the line current would be:  $2200 \text{ VA} / 120 \text{ V} = 18.3 \text{ A}$  for



Understanding generator voltage is crucial for efficient power supply. This section covers the essentials of generator voltage, its significance, and how to adjust it. What Is Generator Voltage? Generator voltage is the electrical potential difference generated. It is measured in volts (V). Generators produce voltage to power electrical devices



My 5000w husky generator is metering 114v at the 120 receptacles, and at each side of the 220 outlet. ANSI standard (old C84.1) for services is +/- 5%, and utilization voltage can be as low as 108V, but the upper limit is the same as for Services - 126V, not 134V. Your service should be



# LOFENG GENERATOR VOLTAGE IS LOW

---

114-126V. Reply reply