

LOW VOLTAGE OF ON-BOARD ENERGY STORAGE DEVICE



Can energy storage be integrated into on-board power systems? While there is some overlap, the maritime industry poses specific challenges to the successful integration of energy storage into on-board power systems: size and weight are of greater importance, the power system is isolated for most of the time and the load characteristic of propellers favours mechanical propulsion.



Why is on-board energy storage device (oesd) used in railway systems? and more energy storage has been utilized in railway systems to save energy cost. As a result, on-board energy storage device (OESD), due to its low energy loss, has been used by industry. However, the



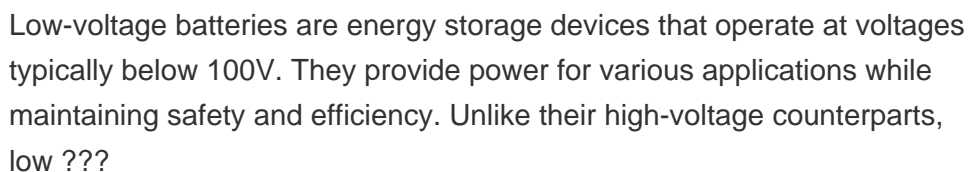
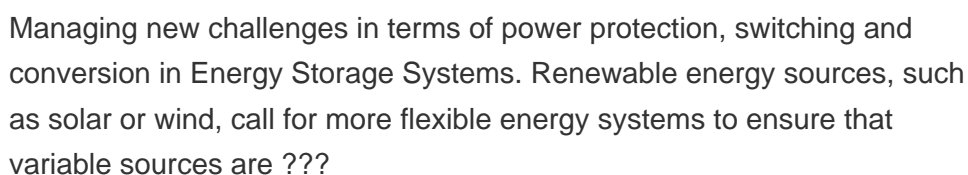
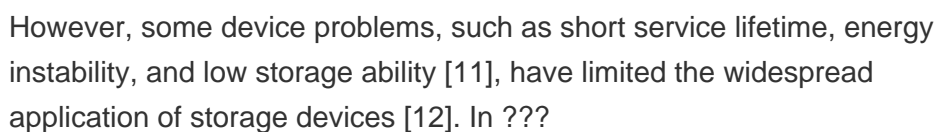
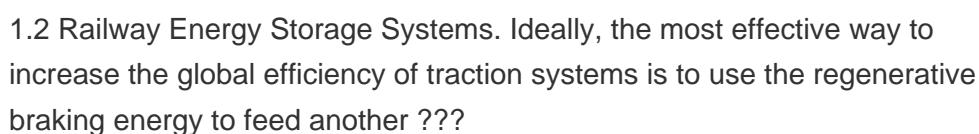
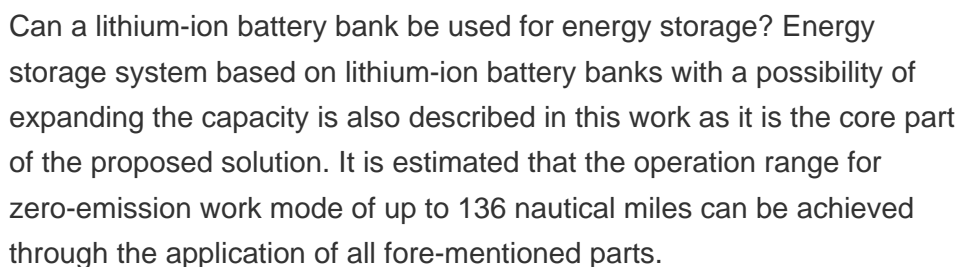
How does on-board energy storage affect a ship's energy management strategy? The exact effect of on-board energy storage depends on the ship functions, the configuration of the on-board power system and the energy management strategy. Previous research in this area consists of detailed modelling, design, and comparisons of specific on-board power systems for explicitly defined operational profiles.



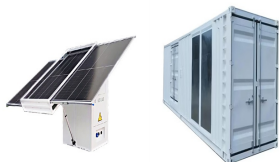
Should energy storage be used on-board ships? Conclusions Several general observations on the use of energy storage on-board ships can be made from the presented results: 1. Systems with electric transmission benefit more from the use of energy storage than systems with hybrid transmission, as there are less losses associated to the battery.



How efficient is energy storage in a ship? The relative efficiency of using batteries varies between -48% and +57%. Energy storage has the potential to reduce the fuel consumption of ships by loading the engine (s) more efficiently. The exact effect of on-board energy storage depends on the ship functions, the configuration of the on-board power system and the energy management strategy.



LOW VOLTAGE OF ON-BOARD ENERGY STORAGE DEVICE



Also, the life-cycle cost is still high for energy storage devices. (iii) No single energy storage technology meets the overall demands of an ideal ESS, which have high efficiency, ???



This paper investigates the benefits of using the on-board energy storage devices (OESD) and wayside energy storage devices (WESD) in light rail transportation (metro and tram) systems. The analysed benefits are the use of OESD and ???



In this paper, a decoupled model of a train including an on-board hybrid accumulation system is presented to be used in DC traction networks. The train and the accumulation system behavior are modeled separately, and the ???



The traditional concept of dc traction systems for light rail applications was based in a simple dc system that was fed by ac/dc noncontrolled diode rectifier substations connected ???



Many different types of electric vehicle (EV) charging technologies are described in literature and implemented in practical applications. This paper presents an overview of the existing and proposed EV charging technologies ???

LOW VOLTAGE OF ON-BOARD ENERGY STORAGE DEVICE



To evaluate the industry's current status and future challenges, the work analyses the technology behind FCEVs and hydrogen storage approaches for on-board applications, followed by a market review.



Most common control strategies for control of energy flow of energy of multiple energy storages are rule based so they are based on the maximum power or current of primary energy storage [10][11]



The rapid development of energy storage devices has enabled the creation of numerous solutions that are leading to ever-increasing energy consumption efficiency, particularly when two or more of these storage systems are linked ???



Low voltage devices are found in various settings, from residential to commercial and industrial. Some examples of low voltage devices include thermostats, doorbells, intercom systems, and landscape lighting. These ???