

# MOVEMENT POWER RESERVE 12 HOURS



What is a power reserve in a watch? The power reserve in a mechanical or automatic watch refers to the energy stored in the mainspring. The watch runs as the spring unwinds, powering features like hands and date. Once the spring has been fully unwound, the watch will stop functioning and needs to be wound again.



What time is the power reserve indicator on a watch? The power reserve indicator is located at 12 o'clock on the watch. IWC Portugieser Automatic ??? Luxury brand IWC Schaffhausen created the Portugieser automatic, an automatic watch with a power reserve of up to seven days.



How long does the power reserve last on a watch? The mainspring gets wound up, then as the watch runs down (displaying the time), it eventually stops when all of the tension (stored energy) is released from the spring. Until recently, the most common length of power reserve was around ~38 hours (an ETA 2824-2 for example) or 46 hours (an ETA/Unitas 6497-1).



Do automatic watches have power reserve? Manual-wound watches need to be wound to maintain power, while automatic ones are powered by a rotating disc that turns while the wearer moves. In this article, we will talk about power reserve ??? its history, how it works, and some examples of watches that have the longest power reserves. What is Power Reserve on an Automatic Watch?



How long should a mainspring power reserve be? Until recently, the most common length of power reserve was around ~38 hours (an ETA 2824-2 for example) or 46 hours (an ETA/Unitas 6497-1). With advances in materials and design of mainsprings and mainspring barrels, it has become a trend to increase the power reserve as much as possible.

# MOVEMENT POWER RESERVE 12 HOURS



What is a power reserve indicator? A power reserve indicator is a useful feature for automatic watch owners, serving as a reminder to start wearing the watch to prevent it from stopping. It's also beneficial for those who own a hand-wound mechanical watch, as it shows when to manually wind it again.



The Swatch Group has released the Powermatic 80 movement in the last couple of years. That is the main movement with 80 hours of power reserve. It's an increase over the older ETA-2824 movement which had something like 42 hours of power reserve. If it's your only watch, then the doubled power reserve is probably irrelevant.



The Heuer 02 movement features a 12-hour chronograph and date complication. For TAG to manufacture the Heuer 02 movement to fit some of their most iconic watches was an extremely intelligent decision. Movement: Automatic; Power Reserve: 80 Hours; Frequency: 28,800 (4Hz) Certification: COSC; Accuracy: -3/+5 Seconds Per Day; Functions



56 Hour Power Reserve. Latest. Latest; Oldest; Random; A to Z; Most Liked; Panerai Caliber OP XI. The manual wind Panerai caliber OP XI movement is based off an an ETA 6497/2. First seen in Panerai models around 2002. It has 17 jewels with a 56 hour power reserve and 21,600 vph. 12 hours ago by MaximusAK.



"power reserve" Measuring only 2.5 mm thick, the 830P movement is an ultra-thin hand-wound mechanical movement boasting an greater power reserve than its predecessors. as a chronograph function with sweep seconds hand and 30 ???



Hours, minutes, seconds; date window at 12 o'clock with a trapezoid-shaped applique; Power reserve display on two rotating discs; Movement. Mechanical self-winding movement; Exclusive Longines Calibre L896.5; 11 1/2 lines, 21 jewels, 25"200 vibrations per hour;

# MOVEMENT POWER RESERVE 12 HOURS

---

Magnetically resistant, with silicon balance-spring; Power reserve: up to 72 hours

# MOVEMENT POWER RESERVE 12 HOURS



It probably has some of the improvements of the 60 hours movement (hacking and improved power reserve) but not to the extent to go up to 60 hours. "That was accomplished [an upgraded 80-hour power reserve] by reducing the consumption of energy, while enlarging the power source. The frequency of the balance, for instance, was slowed from 4Hz



D20 in-house automatic tourbillon movement; Power reserve of 72 hours; Beating at a frequency of 3Hz; Dimensions of 39.2 x 44.4 x 12.1 mm; Power reserve of 72 hours; Beating at a frequency of 3Hz; Made up of 176 components; Limited edition of 10 pieces; Retrovision "47. Made with fullPage.js Contact.



If you are paranoid about your watch's power reserve, then get one with a power reserve indicator like this Orient Star Retrograde. As you can see, the top subdial displays its remaining power reserve which is really handy . Even though your watch's movement might have 40 or 50 ???



Hamilton Jazzmaster Power Reserve Auto (\$1,245+) The final Swatch Group watch we have on our list is the Hamilton Jazzmaster Power Reserve Auto, which like the previous two watches also features a 3-day+ power reserve (aka 80 hours), though in this instance accomplished via the Hamilton Caliber H-13.. Like the previous two models, the ???



Lastly, is the 50-hour power reserve which the movement comes equipped with ??? truly impressive, and a power reserve that high, allows you to always be on the go. Whether that's business meetings in the morning, to flights in the evening, your watch will always be ticking by your side, with that high power reserve.



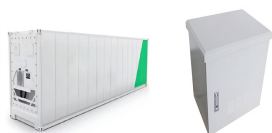
Automatic mechanical movement beating at 28800 vibrations per hour, with a power reserve up to 42 hours. This series is currently the ultra-thin high-end base movement. The movement, the size of a single coin, contains 172 meticulously crafted parts. The movement production line

# MOVEMENT POWER RESERVE 12 HOURS

---

uses fully imported state-of-the-art processing equipment.

# MOVEMENT POWER RESERVE 12 HOURS



Power reserve: 10 days Oris Big Crown ProPilot Calibre 111. Among Oris' annual in-house, manufacture movements, the 111 is one of the brand's several calibres that offers an impressive 10-day power reserve. Indicated via a patented non-linear display at three o'clock, the power reserve display in this watch comes in addition to a date and small seconds ???



Can I improve the movement at all? The 4R36 movement has hours, minutes and seconds hands and is the only 4R3x family member to have the day and date displayed. The 4R36 beats at 21,600 bph and has 24 jewels to ensure its longevity. You can expect a 41 hour power reserve and no sub-dials.



Brand Miyota (Citizen) Caliber Number 9015 Movement Type Automatic, self-winding mechanical Jewels 24 Linges 11.5"" Diameter 26mm Height 3.9mm thick Vibrations Per Hour 28,800 bph Lift Angle 51 degrees Power Reserve 42 hours Rotor Winding Direction Clockwise (uni-directional) Hand-Windable? Yes Shock System Parashock Stem 065-A05 Plastic Holder 500-002 Hand ???

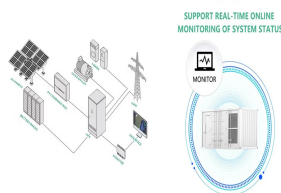


The framed 12 o'clock date window starts off this quirky '50s charm right, but the titular central power reserve indicator steals the show here. Rather than a simple single hand to display the current remaining movement power, Longines instead uses a pair of concentric rotating disks. A hefty 72 hour power reserve at a 25,200 bph



The watch is powered by the UN-118 movement, which has a power reserve of up to 60 hours. The Marine Chronometer is also water-resistant up to 200 meters, making it a great choice for those who love water sports. Innovations in Power Reserve Technology. Innovations in power reserve technology have led to watches with even longer power reserves.

# MOVEMENT POWER RESERVE 12 HOURS



Mechanical Watch 50M Waterproof/water resistant. 72H Power Reserve Hi-beat movement. Bracelet Strap Watches with 4 Stylish Colors??? (Automatic) Power Reserve:72 Hours;21 Jewels;288,00vph/hz Water Resistant:? 1/4 ?5 ATM Straps? 1/4 ?316L Stainless Steel 5000 RPM High-speed independent drilling, and 12 times fine polishing. urban.date steel



Manufacturer Miyota Caliber Number 9100 Movement Type Automatic, self-winding mechanical Lignes 13.5"" Diameter 30.2mm Height 5.52mm Jewels 26 Vibrations Per Hour 28,800 bph (4Hz) Lift Angle 51 degrees Power Reserve 40 hours Anti-Shock System Parashock Winding Direction Uni-directional (clockwise) Hand Windable? Yes Stem 065-A05 (tap 10) Plastic Movement ???



Power Reserve: On December 17, 2020, Sellita issued another evolution to the SW500 which increases power reserve from the the standard 48 hours up to 62 hours. This is possible thanks to a new and improved barrel design. "In order to increase the power reserve of the SW5XX movement family, we have developed a barrel with better performance.



Harwood's movements had a power reserve of up to 12 hours when fully wound. Harwood's automatic watch movement soon gained widespread popularity and was quickly embraced by other manufacturers. Rolex refined the design in 1930 with adjustments to the oscillating weight ??? giving it a full 360-degree.



Manufacturer Seiko Time Corp. Caliber Number 7S26 Replaced By 4R36 Movement Type Automatic, self-winding mechanical In-House? Yes Diameter 27.4mm Casing Diameter 27mm Height 4.9mm thick Jewels 21 Power Reserve ~41 hours Beat Rate 21,600 vph, 3 Hz Lift Angle 53 degrees Shock System Seiko Diashock Regulator Etachron style Magnetic Resistance ???



# MOVEMENT POWER RESERVE 12 HOURS



Manufacturer Seagull Caliber Number ST25, ST2500 Type Automatic Lignes 13.5"" Diameter 30.4mm Height 7.4mm - 7.9mm Jewels 25-45 Beats per hour 21,600 vph Power Reserve ~45-48 hours Anti-Shock System Incabloc Lift Angle Needs confirmed Hand-Windable? Yes Hacking Seconds? Yes Functions Various (see chart below) Country of Manufacture China Known ???



My Nubeo Manta is fitted with a NH35 movement, and I have done 2 x tests recently on the "power reserve". I fully would the watch (about 40 turns of the crown) and left it alone. First time it took 47 hours 20 minutes to stop, the second took 47 hours and 50 minutes to stop. I was really impressed!



Manufacturer ETA Caliber Number 2824-2 Movement Type Automatic, self-winding mechanical Lignes 11.5"" Diameter 25.6mm Thickness 4.6mm Jewel Count 25 Beat Rate / Frequency 28,800 bph / 4Hz Lift Angle 50 degrees Power Reserve ~38 hours Hands 1.50mm / .90mm / .25mm Shock Protection Novodiac / Incabloc (depending on grade) Regulator Etachron Rotor Type ???



In an average mechanical watch, whether automatic or hand-wound, the typical power reserve spans between 38 to 42 hours. That just about gives you enough time???about a day and a bit???to remember to wear the watch or wind it up so it continues ticking, and not mess up the accompanying indicators such as the date and moonphase displays.



Manual-wound watches need to be wound to maintain power, while automatic ones are powered by a rotating disc that turns while the wearer moves. In this article, we will talk about power reserve???its history, how it works, and some examples of watches that have the longest power ???



# MOVEMENT POWER RESERVE 12 HOURS



The power reserve of the movement is terrible, around 8 hours. Keeps time very well. I'm more than happy to upgrade the movement but if anyone has any simple suggestions as to why this problem exists then I'd be very appreciative.



Manufacturer Sellita Caliber Number SW300, SW300-1 Clone Of ETA 2892-A2 Movement Type Automatic, self-winding mechanical Lignes 11.5"" Diameter 25.6mm Height 3.6mm thick Jewels 25 Vibrations Per Hour 28,800 bph, 4Hz Lift Angle 51 degrees Acceptable Amplitude 200-315 degrees Power Reserve 42 hours (up to 56 with new Optimization Barrel) Rotor Style Ball ???



And it comes in the Wancher Storm Jet which I reviewed couple days ago. The movement is 20-jewel Seagull ST1903 hand winding column wheel, flyback chronograph movement. Power reserve approx. 42-hours. The finishing on the movement is actually pretty amazing for the price, even if it is done with machines.