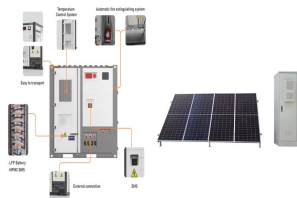
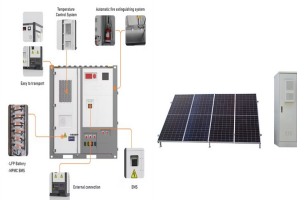


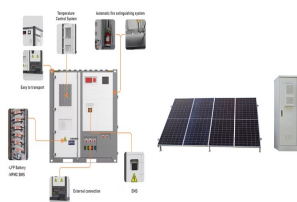
MSD ENERGY STORAGE BATTERY



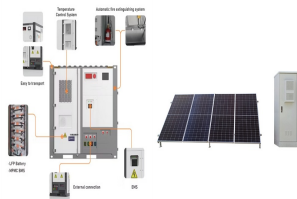
What happens when the MSD connector is released? When the latching mechanism is released, the connector halves separate, breaking the electrical connection and isolating the battery pack. In some cases, the MSD connector can be manually activated by a technician or emergency responder.



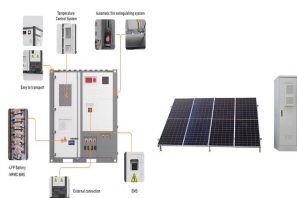
How do I activate the MSD connector? In some cases, the MSD connector can be manually activated by a technician or emergency responder. For example, during maintenance or in the event of an accident, the technician or responder can access the connector and release the latching mechanism, disconnecting the battery pack from the vehicle's electrical system.



Does a MSD meet UL94 V0? In addition, the MSD itself must meet IP67 and IP6k9k to ensure the Pack meets the requirements of IP67 or IP6k9k airtightness. The MSD's materials, except for the fuse and HVIL connectors, must meet the fire resistance level of UL94 V0 to prevent external fire from entering the Pack.



Why are MSD categories becoming fixed? With the industry's gradual platformization, MSD categories are becoming fixed, mainly based on maximum voltage and high current parameters. MSDs act as safety guards for the battery pack, protecting against safety risks of high voltage and high current.



And therefore: VARTA energy storage modules belong to the category of mercury-free battery (mercury content lower than 0.0001%). Disposal considerations In order to avoid short circuit and heating, used VARTA energy storage modules should never be stored or transported in bulk. Proper measures against short circuit are:

MSD ENERGY STORAGE BATTERY



MS Energy is a national high-tech enterprise focusing on "electrochemical-level" battery safety pre-diagnosis technology and providing customers with comprehensive solutions such as investment, construction, operation and management of green energy assets, bringing together the world's top scientific research teams and committed to achieving the national "dual carbon" a?|



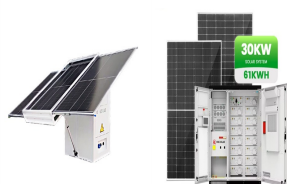
Distributed renewable sources are one of the most promising contributors for DC microgrids to reduce carbon emission and fuel consumption. Although the battery energy storage system (BESS) is widely applied to compensate the power imbalance between distributed generators (DGs) and loads, the impacts of disturbances, DGs, constant power loads (CPLs) a?|



and storage: Keep away from flames during and immediately after charging. Combustion or overcharging may create or liberate toxic or hazardous gases and liquids. Store batteries in cool, dry, well ventilated area. Do not short circuit battery terminals, or remove vent caps during storage or recharging. Protect battery from physical damage.



MSD in energy storage epitomizes a transformative shift in energy management, combining various energy sources to enhance efficiency, sustainability, and resilience. The pivotal role of this framework is underscored by its ability to integrate renewable energy with storage technologies, ensuring a consistent energy supply adaptable to ever

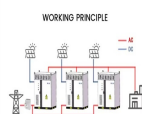


NuEnergy is one of the world's leading suppliers of various high performance lithium-ion batteries and energy storage technologies. Lithium-ion batteries as a power source are dominating in portable electronics, penetrating the EV market, and on the verge of entering the utility market for grid-energy storage. Our batteries are designed to ensure maximum performance over a?|

MSD ENERGY STORAGE BATTERY



The International Renewable Energy Agency predicts that with current national policies, targets and energy plans, global renewable energy shares are expected to reach 36% and 3400 GWh of stationary energy a?



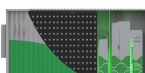
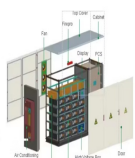
350A MSD maintenance switch introduction. SS3 series products are manual maintenance switch connectors, suitable for battery packs in energy storage systems, and are devices for manually cutting off power supply in high-voltage systems.



What is MSD energy storage battery? 1. MSD energy storage batteries are innovative energy solutions, 2. Utilized for renewable energy applications, 3. Enhance energy efficiency, 4. Contribute to climate change mitigation.



CHEMICAL/TRADE NAME *Lead-Acid Battery (* as used on label)
PRODUCT ID UN2794. FOR FURTHER INFORMATION . Primary Contact: Exide SDS Support (678) 566-9000 . Option 7, Option 1 .
CHEMICAL FAMILY/ Electric Storage Battery CLASSIFICATION . FOR EMERGENCY In the U.S. Call CHEMTREC (800) 424-9300 24-hour Emergency Response Contact



Saichuan Energy Storage Connector is used for positive and negative high voltage connection between battery packs of chemical energy storage systems. Fast, safe and cost-effective installation of energy storage systems for applications up to 1,500 V and 400 A. We have leading cable crimping technology and equipment, and can provide energy storage connectors with a?

MSD ENERGY STORAGE BATTERY



Microvast produces innovative and reliable lithium-ion batteries with advanced technologies. With nearly two decades of experience in battery development, we're accelerating the adoption of clean energy with the installation of more than 31,000 battery systems in 34 countries.



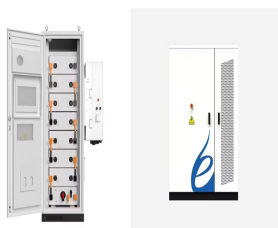
What is the MSD connector 1/4 ? The full English name of MSD: Manual Service Disconnect; the Chinese name: . The Manual Service Disconnect is a manual maintenance protection switch with a high voltage interlock function for use in the high voltage or battery box of an electric vehicle. It is a tool-less solution for disconnecting and preventing short-circuiting of a?



Introduction of MSD Manual Service Disconnect. The mechanical switch of the high-voltage power supply of the energy storage system is a device for manually cutting off the power supply of the high-voltage system. Features of MSD Manual Service Disconnect. The product has IP67 waterproof function and IPXXB anti-touch function;



enersys(R) - data logger enersys(R) - network & softwares battery handling solutions view more monitoring & fleet management energy systems streetflex(R) siteflex(R) - cabinets & enclosures siteflex(R) - power systems cordex(R) view more energy systems



MSD receptacle part numbers: Stud dimensions Fuse Ratings Part number Part dimensions(mm) M8 SHUNT 2315855-7 110 110 53 630A 2315855-6 500A 2315855-5 450A 2315855-4 for your hybrid and electric vehicle battery pack and power distribution unit application needs. This newly designed MSD meets United States Council for Automotive Research

MSD ENERGY STORAGE BATTERY



SAFETY DATA SHEETS (SDS/MSDS) ENERGY STORAGE Power disruption can happen due to generation, transmission malfunctions or weather-related outages. With a choice of many batteries designed specifically to support energy storage, the EnerSys(R) PowerSafe(R) battery ranges let you select the best solution for your application.



For example, an MSDS will list the chemicals within a product, and state whether the product is flammable, explosive, or corrosive. It will also prescribe safe handling (eg. ventilation or protective clothing), storage, emergency procedures, and proper disposal . "Sample of a 9 Section MSDS" Image Courtesy:



A manual disconnect is often referred to as the fourth safety device on a high voltage battery pack. This device is used to disconnect the electrical continuity within the battery pack so that the vehicle can be serviced. The MSD is a?|



Mini MSD Connector Liquid Cooling Quick Connector HVPT Connector High Voltage EV Cable EV Charging Cable EV Chargers IEC Standards AC SAE Standards AC Rated Energy Battery Storage Connectors. Energy Battery Storage Connector 200A Plug Right Angled 50mm2 Unshielded Cable 8mm Red.



The International Renewable Energy Agency predicts that with current national policies, targets and energy plans, global renewable energy shares are expected to reach 36% and 3400 GWh of stationary energy storage by 2050. However, IRENA Energy Transformation Scenario forecasts that these targets should be at 61% and 9000 GWh to achieve net zero a?|

MSD ENERGY STORAGE BATTERY



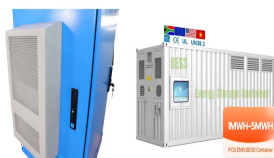
Energy Storage Connector High Protection Connector MSD Waterproof Multi-Core Communication Connector Multi-Spring Contact Power Connector Simple High Current Connector Mobile Energy Storage. MSD-350A 20030008556 MSD, for battery. Current: 350A, Voltage: 1500V, Certification: UL, TUV Plug with interlock pin: EMP-350A-D-D-OR-HV



Definition. In Germany, the energy market encompasses all markets for electricity and gas transported via the respective grid. This includes exchanges and other trading centres where both are traded as an energy source, as well as markets for ancillary services. An example of such a service is the provision of reactive power, which is used to maintain the voltage in the a?|



SAE standards require the function of a Manual Service Disconnect (MSD), when open, to remove any voltage between positive and negative Rechargeable Energy Storage System (RESS) output terminals. Another SAE standard specifies that measured voltage across all external battery terminal sets shall be less than 60 VDC within 5 seconds after the manual a?|



Energy storage harnesses play the role of signal and data transmission and power supply in the entire energy storage chain. The energy storage system requires a stable and reliable signal connection, which requires the energy storage wiring, Flame retardant and other functional aspects have very strict requirements.



The output power of the battery pack of a project requires a current of about 130Aa: Umax of the pack: 420V, and the rated voltage of the MSD needs to be greater than or equal to 450V. b: Consider the load continuous current: MSD can choose 350A Fuse (350Ai 1/4 ?2*130A) c: Response time consideration: Umax: 420VDCR100mI(C), short-circuit current

MSD ENERGY STORAGE BATTERY



MSD utilizes a two-stage lever to open the HVIL circuit prior to separation of HV contacts. It is a tool-free solution for disconnecting the internal high voltage battery pack and protecting the high voltage battery pack from short circuit. Storage temperature -40°C to 85°C STANDARDS: USCAR-2 USCAR-37 LV-215 RoHS MSD. 3 PRODUCT DIMENSIONS. 4



Victron Energy B.V. | De Paal 35 | 1351 JG Almere | The Netherlands
General phone: +31 (0)36 535 97 00 | E -mail: sales@victronenergy
Victron Energy Battery MATERIAL SAFETY DATA SHEET Lithium SuperPack 12,8V/20Ah, 60Ah, 100Ah, 200Ah, 25,6V/50Ah SECTION 1 - GENERAL INFORMATION MANUFACTURER's NAME: Victron a?|



Kijo Group is a professional energy storage battery company that integrates science, industry, and trade with production capacity. We have 30 years of expert experience and four production bases in China, and we also possess more than 400 middle and senior technical personnel. Please click to get the KIJ0 battery price!