

# NUKU ALOFA GRAVITY ENERGY STORAGE PROJECT



Wharf no. 1, the latest milestone of the Nuku'alofa Port Upgrade, was commissioned in a ribbon-cutting ceremony on 12 July 2024 in Tongatapu. The Prime Minister Hon. Hu'akavameiliku was joined by Asian Development Bank (ADB) Director General for the Pacific, Leah Gutierrez, the Australian High Commissioner to Tonga, Brek Batley, and Tonga's ???



The project will convert the distribution network of the Nuku'alofa with climate resilient infrastructure. The project will (i) convert the open overhead network to covered area bundled conductors, (ii) replace overhead consumer connections to underground cables, (iii) convert existing old distribution poles to climate resilient high standard poles, and (iv) replace ???



development currently being undertaken in Nuku'alofa through the Nuku'alofa Reconstruction Project (NRP) and the Integrated Urban Development Sector Project (IUDSP).<sup>2</sup> 2. Impact and Outcome. The impact of the project is improved living conditions for the population of Nuku'alofa. The outcome of the project will be effective, efficient, and

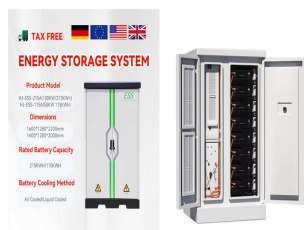


A total of 311 applications were received for clean energy or decarbonisation projects after the call for submissions opened last summer. Of these, seven were selected to receive direct funding from a ???1.1 billion budget and include hydrogen, carbon capture and storage, advanced solar cell manufacturing and other technologies.



Nuku'alofa by: improving waste disposal operations at the Tapuhia landfill, improving and expanding solid waste collection services, and strengthening financial management capacity in WAL. (iv) Output 4 - Other municipal services within Nuku'alofa: Other municipal services will be improved through the implementation of selected high-priority

# NUKU ALOFA GRAVITY ENERGY STORAGE PROJECT



Nuku'alofa, Tonga: Grant agreements worth an additional USD30 million, for the Nuku'alofa Port Project, were signed by Tonga's Minister for Finance, Hon Tiofilusi Tiueti and Asian Development Bank Director General for the Pacific, Leah Gutierrez, in a virtual meeting on 2 November. The additional financing from the ADB and Australia will address cost overruns ???



Nuku'alofa, Kingdom of Tonga - Representatives from the Government of Tonga alongside the Green Climate Fund (GCF) and the UN Development Programme (UNDP) signed the project document for the Tonga Coastal Resilience Project on 29 August 2024. Funded by GCF, this landmark initiative ??? with a total budget of USD 23.9 million ??? is a significant step ???



The project will rehabilitate 16.5 kilometers of the medium-voltage transmission network, upgrade 50 kilometers of the low-voltage distribution network in seven villages, climate- and disaster-proof the Nuku'alofa electricity network and connect 59 new households to the grid.. The project will also enhance gender inclusiveness of Tonga Power Limited (TPL) by providing ???



Battery Energy Storage Systems (BESS) is a technology developed for storing electricity with the underlying idea being that this stored energy can be utilized at a later time. This project is funded through the TREP project which is co-financed through ADB, GCF fund and DFAT along with contributions from government of Tonga and TPL. Popua



Nuku'alofa Network Upgrade Project (IFR TON 49450-036) ECONOMIC ANALYSIS A. Introduction 1. The implementing agency, Tonga Power Limited (TPL), generates and distributes Guidance for Clean Energy Projects. Manila. 11 Based on diesel generation fuel efficiency of 4.07 kWh per liter for Tongatapu and renewables penetration of 12.7%,

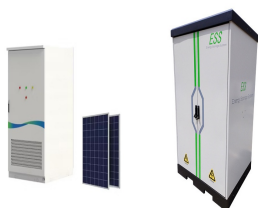
# NUKU ALOFA GRAVITY ENERGY STORAGE PROJECT



Tonga Power Limited is Tonga's sole electricity provider. We generate, distribute and sell electricity to 25,043 customers in the Kingdom of Tonga, including the outer islands of "Eua, Ha"apai & Vava"u.



NUKU"ALOFA, TONGA (18th July 2019) ??? Tonga's first Large scaled Battery Energy Storage System (BESS) will be built at the Popua Power Station after an agreement was signed today between Tonga Power Limited and Akuo Energy SAS, an energy company specializing in developing and operating renewable energy power plants. Battery Energy Storage Systems ???



Nuku"alofa Urban Development Sector Project (RRP TON 42394-22) 1 Initial Environmental Examination TONGA: Nuku"alofa Urban Development Sector Project Water Supply Improvement Subproject - Water Supply Production, Storage and Distribution Prepared by Planning and Urban Management Agency (MLSNR) For the Asian Development Bank (ADB)



The Nuku"alofa Network Upgrade Project aims to improve climate resilience (particularly cyclone resilience), reduce network losses, and improve the safety and reliability of the electricity ???



The project is aligned with the following impacts: (i) living standards in Nuku"alofa improved, and (ii) resilience to existing extreme natural events and to the threat of climate change increased. The project will have the following outcome: Nuku"alofa residents have access to improved, effective and climate resilient urban services and infrastructure. Outputs

# NUKU ALOFA GRAVITY ENERGY STORAGE PROJECT



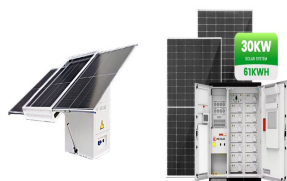
Nuku'alofa Port as an international gateway container and general cargo terminal and allow it to accommodate future trade growth and expansion, thereby strengthening Tonga's economic and social connectivity in the Pacific. The total project cost is estimated to be \$50 million with \$45 million ADB financing



Nuku'alofa, Kingdom of Tonga: Representatives from the Government of Tonga alongside the Green Climate Fund (GCF) and the UN Development Programme (UNDP) have today signed the project document for the Tonga Coastal Resilience Project. Funded by the GCF, this landmark initiative ??? with a total budget of US\$23.9 million ??? is a significant step forward in ???



Applications of Gravity Energy Storage Technology. Grid Stabilization: Gravity-based energy storage technology systems can help stabilize the grid by storing excess energy during periods of low demand and releasing it when demand peaks, thus reducing the need for costly peaker plants and enhancing grid reliability.; Renewable Integration: By providing a ???



the government and development partners and to fully utilize the benefits in the Nuku'alofa network. 7 Government of Tonga. 2021. Tonga National Infrastructure Investment Plan 3, 2021???2030. Nuku'alofa. 8 Government of Tonga. 2021. Tonga Energy Road Map PLUS framework, (2021-2035). Nuku'alofa.



Project Name Paci???c Renewable Energy Investment Facility: Nuku'alofa Network Upgrade Project Project Number 49450-036 Country / Economy Tonga Project Status Approved Project Type / Modality of Assistance Source of Funding / Amount Grant 0868-TON: Nuku'alofa Network Upgrade Project under the Paci???c Renewable Energy Investment Facility

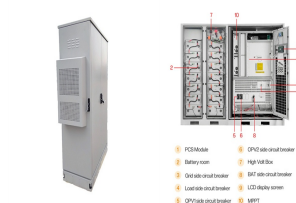
# NUKU ALOFA GRAVITY ENERGY STORAGE PROJECT



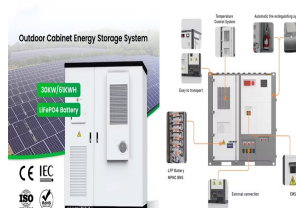
Project title Nuku"alofa Urban Development Sector Project Document title ESU Bi-Annual Report Date 12th December 2016 Author(s) Sonia CHIRGWIN Reference n? ESU-6 Quality control Version Date Written by: Checked by: Draft v1 30/11/16 Sonia CHIRGWIN John GILDEA Distribution Sent to: Name Company Sent on:



NUKU"ALOFA, TONGA (14th November 2019) ??? Tonga's second Large scaled Battery Energy Storage System (BESS) will be built at Matatoa after an agreement was signed today between Tonga Power Limited and Akuo Energy SAS, an energy company specializing in developing and operating renewable energy power plants. Akuo Energy were also the successful contractor ???



For the three projects where MOI was the implementing agency, a project accountant was recruited and based in the project management unit (PMU), to handle the disbursements and financial management tasks for each project. B. PROJECT DESCRIPTION 4. The Nuku"alofa port is the main international port of Tonga and the country's lifeline, given



The Project will support the establishment of municipal government in Nuku"alofa and will provide high priority urban infrastructure identified in the Nuku"alofa Urban Infrastructure Development Plan (UIDP). The Project will expand upon infrastructure development currently being undertaken in Nuku"alofa through the Nuku"alofa Reconstruction Project (NRP) and the Integrated Urban ???



Gravitricity has partnered with firms in the US and Germany to deploy its gravity energy storage solution while Energy Vault has provided an update on its China project. Gravitricity has signed an agreement with US firm IEA Infrastructure Construction to seek funds for projects in the US from the Bipartisan Infrastructure Bill which provided US

# NUKU ALOFA GRAVITY ENERGY STORAGE PROJECT



This output will help the government address the dual challenges of reducing high technical losses (by 2.5 percentage points) and incorporating climate resilience features for the grids in ???



Lithium-ion batteries, the type that power our phones, laptops, and electric vehicles, can ramp up equally quickly, however, and have similar round-trip efficiency figures as gravity solutions



How to Visit Nuku'alofa on a Budget. Tonga's capital city is a budget-friendly destination for backpackers and travellers on a budget. Nuku'alofa is Tonga's "big smoke", which is well worth spending at least a couple of days exploring to uncover the vibrant Tongan culture. The city is the home to the royal family, where their historical sites and iconic structures can be ???



A Project Funded by AusAID- 2006- 2007 . 2 distribution for Nuku'alofa area. . Storage & Treatment ??? Each of the wells pump water into 6 cement reservoirs Distribution ??? Distribution is by gravity feed to the city of Nuku'alofa. ??? Supply rate is 6/7 ML per day for Nuku'alofa supply. ??? Every property is required to connect



Nuku'alofa by: improving waste disposal operations at the Tapuhia landfill, improving and expanding solid waste collection services, and strengthening financial management capacity in WAL. (iv) Output 4 - Other municipal services within Nuku'alofa: Other municipal services will be improved through the implementation of selected high-priority