

OKNO FOTOWOLTAICZNE SOUTH GEORGIA AND SOUTH SANDWICH ISLANDS



Where is South Georgia & the South Sandwich Islands? South Georgia & the South Sandwich Islands is a British Overseas Territory in the southern Atlantic Ocean. Stunningly beautiful and rugged, this island wildlife sanctuary, once visited, is not easily forgotten. Its snow-covered peaks, blue glacier ice and emerald green bays are breathtaking sights.



Are South Georgia and the South Sandwich Islands mountainous? South Georgia and the South Sandwich Islands are a collection of islands in the South Atlantic Ocean. Most of the islands, rising steeply from the sea, are rugged and mountainous. At higher elevations, the islands are permanently covered with ice and snow.



Are there volcanoes in South Sandwich Islands? The South Sandwich Islands comprise 11 mostly volcanic islands (excluding tiny satellite islands and offshore rocks), with some active volcanoes. They form an island arc running north-south in the region 56°18'N-59°27'S, 26°23'W-28°08'W, between about 350 and 500 mi (300 and 430 nmi; 560 and 800 km) southeast of South Georgia.



What happened to South Georgia and the South Sandwich Islands? In 1985, South Georgia and the South Sandwich Islands ceased to be administered as a Falkland Islands Dependency and became a separate territory. The King Edward Point base, which had become a small military garrison after the Falklands War, returned to civilian use in 2001 and is now operated by the British Antarctic Survey.



What is the ccTLD for South Georgia and the South Sandwich Islands? The Internet country code top-level domain (ccTLD) for South Georgia and the South Sandwich Islands is .gs. The parts of the islands that are not permanently covered in snow or ice are part of the Scotia Sea Islands tundra ecoregion.

OKNO FOTOWOLTAICZNE SOUTH GEORGIA AND SOUTH SANDWICH ISLANDS



OverviewHistoryLanguagesGeographyClimateGovernmentEconomyEcology



1 South Georgia Island is the only inhabited island, with the summer-only settlement of Grytviken, and the only one regularly visited by cruise ships.Minor islands are ranged along its north coast ???



Countries of South America: Argentina ? Bolivia ? Brazil ? Chile ? Colombia ? Ecuador ? Guyana ? Paraguay ? Peru ? Suriname ? Trinidad and Tobago ??? ? Uruguay ? ???



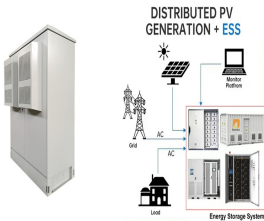
South Georgia is home to two mountain ranges ??? the Salvesen and the Allardyce ??? which soar to a peak of almost 3,000 metres above the sea. In the summer almost 75% of the island is covered in snow, ice, and glaciers.



South Georgia & the South Sandwich Islands is a British Overseas Territory in the southern Atlantic Ocean. Stunningly beautiful and rugged, this island wildlife sanctuary, once visited, is ???



OKNO FOTOWOLTAICZNE SOUTH GEORGIA AND SOUTH SANDWICH ISLANDS



In 1775, The UK claimed supremacy over South Georgia and in 1908; over the South Sandwich Islands. 1985 marked the formation of the territory of "South Georgia and the ???



? 1/4 ?? 1/4 ?South Georgia and The South Sandwich Islands,? 1/4 ?SGSSI? 1/4 ?,,???56?18???-59?30??????26?-28?30???,??? ???



In contrast to South Georgia, the South Sandwich Islands are rarely visited, and information on the terrestrial and marine flora and fauna is sparse. The archipelago is the only arc of active volcanoes in the Southern Ocean and its ???



1. South Georgia is not part of Antarctica. South Georgia and the South Sandwich Islands are a chain of sub-Antarctic islands in the Southern Ocean. They are located more than 2,000km ???



The South Atlantic island of South Georgia, situated south of the Antarctic Convergence, was the first Antarctic territory to be discovered. [1] It was first visited in 1675 by Antoine de la Roch?, ???

OKNO FOTOWOLTAICZNE SOUTH GEORGIA AND SOUTH SANDWICH ISLANDS



South Georgia is an island in the South Atlantic Ocean that is part of the British Overseas Territory of South Georgia and the South Sandwich Islands. It lies around 1,400 kilometres (870 mi) east of the Falkland Islands. Stretching in the ???



South Georgia and the South Sandwich Islands Cruises to Antarctica, Polar Travel With Cool Antarctica and Antarctica Travels Notes * Prices are per person. the lowest price is usually for triple occupancy in a basic cabin, the highest for ???



South Georgia and the South Sandwich Islands are two groups of sub-Antarctic islands of the Southern Ocean east of the southern tip of South America, north of Antarctica. The islands are an overseas territory of the ???



This Order extends the boundaries of South Georgia and South Sandwich Islands, so as to include, as territorial sea, the sea within twelve nautical miles of the baselines, together with its ???

- TELECOM CABINET
- BRAND NEW ORIGINAL
- HIGH EFFICIENCY