

ORIGINAL GOD ENERGY STORAGE WAREHOUSE



What is the energy warehouse? The Energy Warehouse delivers commercial and industrial scale energy storage without the challenges associated with toxic electrolytes, cooling requirements, fire risks, and other complications associated with other battery technologies.



Why do you need an energy warehouse? Easier installation and operation: The Energy Warehouse reduces or eliminates the need for hazmat permits for transport, HVAC, fire suppression and end of life disposal planning. Flexibility to meet any need: Gain the flexibility to shift between charge and discharge and rate of storage as needed for efficient energy management.



Why should a C&I energy warehouse be used? Flexibility to meet any need: Gain the flexibility to shift between charge and discharge and rate of storage as needed for efficient energy management. The Energy Warehouse provides C&I customers with safe storage systems and energy resilience, increasing uptime and insulating operations from grid outages.



What makes the Energy Center unique? Easy to site, install and operate: The Energy Center's environmentally benign chemistry, comprised of iron, salt and water, make this solution one of the easiest to deploy and maintain. No toxic materials facilitates permitting. No risk of thermal runaway delivers safe, reliable operation. Standard components enable service and repair.

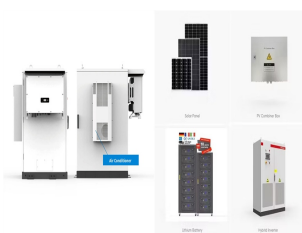


Many warehouse and storage buildings were newer buildings—about one-half (51%) were constructed in or after 1990. Energy use in warehouse and storage buildings. Warehouse and storage buildings used 528 trillion British thermal units (TBtu) of energy in 2018. Although warehouse and storage buildings accounted for 18% of total commercial

ORIGINAL GOD ENERGY STORAGE WAREHOUSE



Battery energy storage is safe using second-life batteries with safety systems from automotive manufacturers. Our systems meet energy sector compliance standards with rigorous testing and continuous software monitoring, alongside integrated fire prevention systems for added safety. To know more, connect with our experts today!



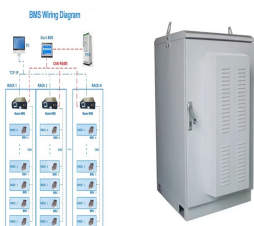
The ENERGY STAR Score for Warehouses applies to buildings that are used to store goods, manufactured products, merchandise, or raw materials, including non-refrigerated warehouses, refrigerated warehouses, and distribution centers. The objective of the ENERGY STAR score is to provide a fair assessment of the energy performance of a property relative to ???



Enhanced energy storage infrastructures such as fire energy storage warehouses present transformative opportunities for industries striving for energy efficiency and sustainability. Their unique ability to harness and store thermal energy makes them valuable assets in the evolving energy landscape.



Radiative cooling technology dissipates heat to outer space through the atmospheric window. A radiative cooling membrane possessing spectrum-selective optical properties has been installed on the grain storage warehouses in Hangzhou, China for a field testing. The long-term measurement results show notable decreases in headspace ???



Cold storage warehouses (CSWs) are large energy consumers and account for a significant portion of the global energy demand. CSWs are ideally suited for solar renewable energy, as they generally have large flat roofs and their peak demand can coincide with the sun shining. Original title: Financial viability of liquid air energy storage

ORIGINAL GOD ENERGY STORAGE WAREHOUSE



1. The amount of electricity an energy storage warehouse can discharge greatly varies based on multiple factors, such as its capacity and technology used, 2. Energy storage solutions range from grid-scale batteries to smaller community-based systems, 3. Peak power demand periods show significant discharge activities, 4.



Cold storage warehouses (CSWs) are large energy consumers and account for a significant portion of the global energy demand. CSWs are ideally suited for solar renewable energy, as they generally



This is the original release of the ENERGY STAR score for warehouses in Canada. This document presents details on the development of the 1 ??? 100 ENERGY STAR score for warehouse properties. More information on the overall approach to develop ENERGY STAR scores is covered in our Technical Reference for



Acquiring the Energy Storage Device and unlocking the Research Terminal is part of the An Eye for An Eye Quest in Genshin Impact. Players must collect three Energy Storage Devices and use them on



Electric warehouses are a technological advancement that will replace traditional substations for delivering reliable electric energy. In addition to the components normally found in a substation, electric warehouses will include energy storage modules to store supplemental power. These large-scale units will release energy when power supplied by ???

ORIGINAL GOD ENERGY STORAGE WAREHOUSE



Being the second most common commercial building type according to the latest EIA energy outlook, warehouses sustainability is a key component to decarbonize US commercial buildings. Companies are taking multiple steps in reducing the CO₂ emissions in the logistics sector, and specifically improving the energy efficiency of warehouse facilities.



Energy Center??? Energy Warehouse??? With a flexible and modular design, our batteries can be tailored to meet specific energy storage needs. Rest assured, our batteries are engineered to eliminate the risk of thermal runaway and meet the highest safety standards with an IEEE-693 Seismic High rating, NFPA 855 certification, and compliance



Cryogenic energy storage, integrated synergistically with RES and large refrigerated warehouses, is a promising environmentally friendly technology (addressed by the EU CryoHub project). Hence, studies were carried out to identify where large energy-intensive refrigerated warehouses are situated across Europe and how much power they consume.



Specialties: Whether you're looking for a simple storage shed, or you're needing a workshop or hobby space, a Cook shed is the perfect blank canvas! Cook Portable Warehouses builds high quality portable buildings in a variety of styles and sizes to meet any need or budget. We offer easy terms through our hassle free Rent-to-Own program. Low down payments and no credit ???

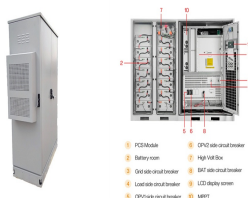


Three cases are defined, which present the refrigerated warehouse without an energy storage system (Case 1), with a cold energy system (Case 2), and a battery system (Case 3), respectively. 3. Results and discussions The indoor temperature of the refrigerated warehouse, the hourly electricity consumption, and the operational cost are calculated

ORIGINAL GOD ENERGY STORAGE WAREHOUSE



Energy consumption by distribution warehouses has become an essential component of green warehousing and research on reducing the carbon footprint of supply chains. Energy consumption in warehousing is a complex and multilayered problem, which is generally considered in the literature in relation to its detailed components, not as part of comparative ???



The Advanced Energy Design Guide for Small Warehouses and Self-Storage Buildings (AEDG-WHSE; the Guide) is intended to provide a simple approach for contractors and designers who create warehouses. Application of the recommendations in the Guide should result in warehouses with 30% energy savings when compared to those same warehouses



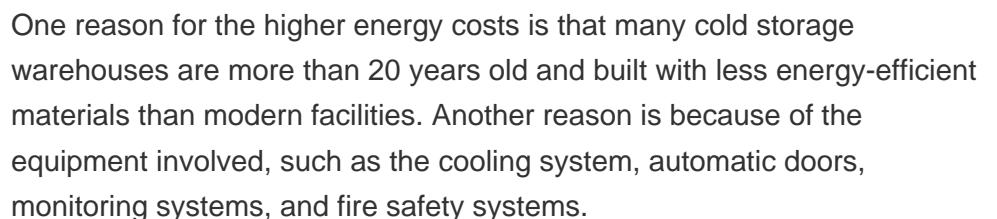
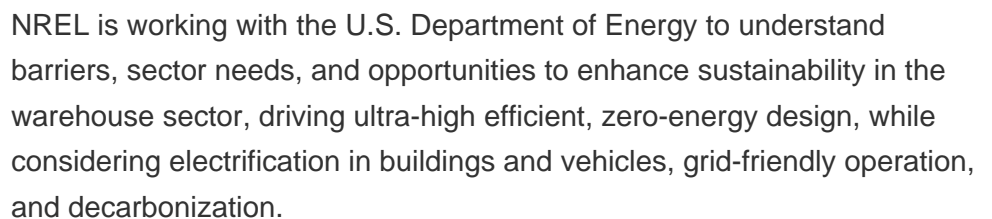
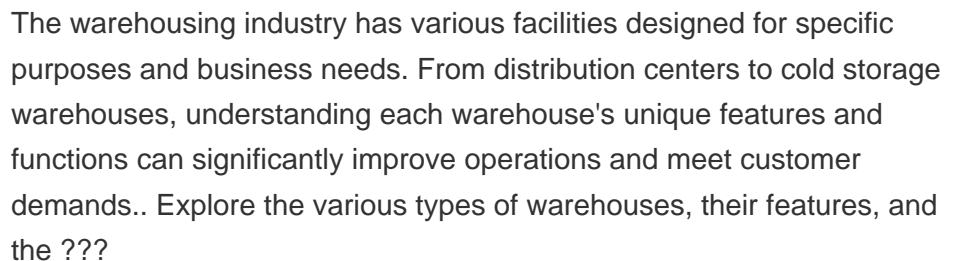
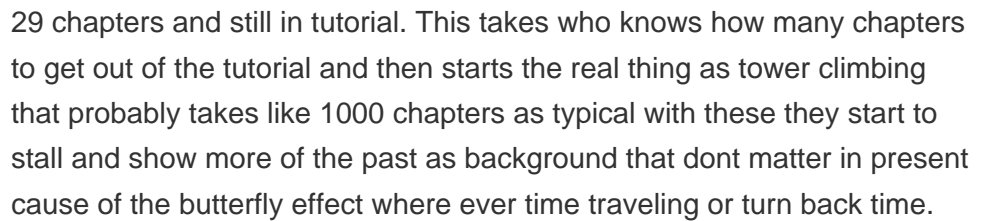
An order picker performs repetitive tasks, which may result in fatigue, body pain, and injuries. Therefore, it is essential to approach the storage location assignment from an ergonomic standpoint as well. This study presents an energy consumption based optimization model for storage location assignment in an industrial warehouse that stores metal bars. ???



energy consumption in warehouse buildings and the analysis of construction and functioning of modern storage warehouses. For a warehouse the following are presented: operation evaluation measures and indexes, an energy balance, ideas for improvements in terms of energy conservation in particular functioning zones. 1 Introduction



Refrigerated Facility Overview. The analysis presented in this article is based on an actual refrigerated warehouse comprised of two separate refrigerated docks, a cooler, and three freezers totaling 166,875 ft² (15 500 m²) of conditioned space. The size and respective temperature setpoints for each of the refrigerated spaces in the facility are given in Table 1, and the actual ???



ORIGINAL GOD ENERGY STORAGE WAREHOUSE



To open the Energy Storage Warehouse and Supply Warehouse 2 in Genshin Impact during the Unfinished Comedy quest with Cater, two out of the four available rooms can be accessed immediately. As long as the Gear Drivetrain is pointing in the correct direction before being removed from its original spot, the door will still open, even if the