

OUTDOOR ENERGY STORAGE GLUE



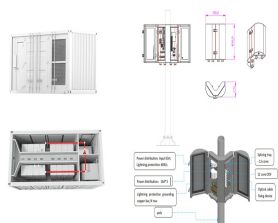
DOI: 10.1002/adfm.202009217 Corpus ID: 229438829; Elastic Energy Storage Enabled Magnetically Actuated, Octopusa??Inspired Smart Adhesive @article{Wang2020ElasticES, title={Elastic Energy Storage Enabled Magnetically Actuated, Octopusa??Inspired Smart Adhesive}, author={Suhao Wang and Hongyu Luo and Changhong Linghu and Jizhou Song}, a?|



At KonkaEnergy, our mission is to empower a sustainable and resilient future by pioneering innovative Battery Energy Storage Systems (BESS). We are committed to reshaping the global energy landscape, providing cutting-edge solutions that maximize efficiency, minimize environmental impact, and drive positive change.



When installing outdoor tiles for lasting results, choose the right adhesive. Consider Gorilla Heavy Duty Construction Adhesive for fast bonding and versatility. Loctite Power Grab Express is environmentally friendly with high initial tack. For a ready-to-use option, try the ROBERTS 5900-1 Ceramic Tile Adhesive. Gorilla Max Strength Clear offers durability in all a?|



Solar and Energy Storage Installer Oct 18, 2013 #2 solburden said: Is adhesive sticker labeling on outdoor PV equipment acceptable? Is adhesive sticker labeling on outdoor PV equipment acceptable? NEC 110.21 Marking, does not specifically address this only dictating the marking is suitable for the environment it is placed in. My opinion is



LePage Outdoor Weatherproof Wood Glue is a high-performance adhesive that's resistant to water and moisture, making it ideal for interior and exterior projects that are exposed to weather or wetness. The wood glue dries to a tough, high-strength bond; in fact, it has over 3700 psi of shear strength on maple.

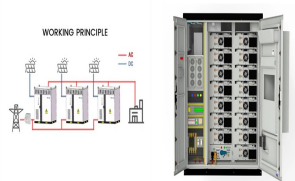
OUTDOOR ENERGY STORAGE GLUE



Weatherproof Adhesive Glue: Indoor or Outdoor Bonding & Sealing
Adiseal weatherproof adhesive glue delivers a 100% water-resistant bond in dry, damp, wet, or even underwater conditions. It is suitable for both internal and external construction bonding owing to its weatherproof characteristics.



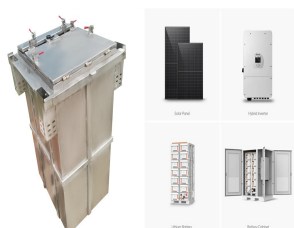
Storage Battery GlueTD-2058AB Medium Cover Glue for Storage Battery.Product featureThe product is medium cover glue for storage battery, low viscosity, good fluidity, easy to penetrate the the gap of the product. It can be solidified at room temperature or medium temperature, and the curing speed is fast.



1. What are the characteristics of outdoor energy storage power? Outdoor energy storage power is equivalent to a small portable charging station, with light weight, large capacity, high power, long life and strong stability. Outdoor energy storage power supply is not only light in weight and easy to carry, but also its large capacity and high



Application and Installation Tips for Outdoor Tile Adhesive. When choosing a tile adhesive for outdoor use, look for a product that is specifically designed for exterior applications and is weatherproof. Make sure it is suitable for the type of tile you are using and can withstand temperature changes.



The outdoor cabinet energy storage system, is a compact and flexible ESS specifically designed for small C& I loads. This system seamlessly integrates essential components such as battery units, PCS, fire extinguishing system, temperature control systems, and EMS systems. With a capacity range of 100kWh to 200kW, it meets diverse capacity



Type-3 wood glue: Equals epoxy without the mess How type-3 glue works: Water in yellow glues carries microscopic polymer strands into the cells of the wood parts being joined. As the water evaporates, the strands harden to give the glue strength to hold parts together. In type-3 glues, a chemical

OUTDOOR ENERGY STORAGE GLUE

reaction between the strands also locks them together to a?

OUTDOOR ENERGY STORAGE GLUE



6 . Moreday's Outdoor All-in-One Energy Storage Cabinet provides an innovative, integrated solution for energy storage needs in a variety of settings. With a robust, outdoor-ready design and advanced Li-ion (LFP) technology, this system is designed to optimize energy efficiency and sustainability. Whether for commercial, industrial, or



Extracting power from alternative energy sources like the sun addresses sustainability goals and increases the amount and availability of global power, even in areas with limited infrastructure. Increasing the efficiency of a solar power networka??for both conversion and storagea??is key to fully harnessing solar energy.



Pixii MultiCabinet solutions are modular battery energy storage systems that scale to your needs. It comes with smart functionality like time shift and peak shaving to reduce your energy cost, and it's fully integrated, enabling you to get the most out of both new and existing solar panels. And with grid support services, like Fast Frequency Support, your business can take part in the a?]

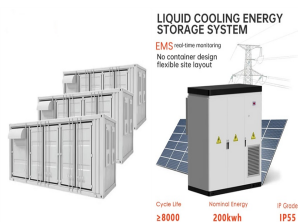


Outdoor battery storage systems are powerful energy storage systems that have been specially developed for outdoor use. They consist of lithium-ion batteries housed in a robust casing. Outdoor battery storage systems can store energy in large quantities. This makes them an ideal complement to renewable energy sources such as PV systems.



While hot glue can be used outdoors, it is important to carefully consider the outdoor environment and the limitations of the specific hot glue being used. By choosing the right hot glue and taking precautions to protect the glued joint from extreme temperatures and moisture, you can successfully use hot glue in a variety of outdoor applications.

OUTDOOR ENERGY STORAGE GLUE



Discover materials that help handle heat and current isolation with battery modules and packs, and that offer physical and chemical protection for sensitive assemblies in any environment. a?]



A portable power station is a compact and versatile energy storage system for outdoor activities, including camping, hiking, and other off-grid adventures. These portable power stations typically incorporate lithium-ion battery technology, offering a lightweight, high-capacity power solution. They can be charged in advance using various power



High-tech adhesive tapes for e-mobility and energy storage systems From high-tech tapes to process integration We tailor the properties of our adhesive to the requirements of the respective application. For example, we can adjust the adhesive strength by adding additives or meet requirements such as flame retardancy or electrical and thermal con-



Energy storage systems are installed in the most varied locations. A multi-storey car park, for example, offers protection in accordance with installation environment 1. As part of a solar farm, on the other hand, storage systems are deployed in less protected environments of the categories Outdoor Light or Outdoor Advanced.



Conductive Adhesive for Energy Storage. Astro 3486. Astro 3486 Conductive, Chemically-Resistant Adhesive for Batteries Features Very low volum Read More . Try Our Product Finder. Our product finder will walk you through a series of questions to a?]



Heat dissipation from Li-ion batteries is a potential safety issue for large-scale energy storage applications. Maintaining low and uniform temperature distribution, and low energy consumption of

OUTDOOR ENERGY STORAGE GLUE



Solar energy provides a growing and viable alternative to conventional power sources. Harnessing solar power requires innovative, enabling materials like solar panel adhesives and sealants to craft a solar architecture with improved system performance, reliability, extended component lifetimes, and warranties, all delivered at a lower cost per watt.



Find strong and reliable adhesives and glue for indoor and outdoor use at Toolstation. Free Delivery On All Orders Over GBP25. Buy Adhesives Now. Set Store Register Your Lists General Adhesive General adhesives create durable and weatherproof bonds on wood, metal, stone, ceramic, PVC, cork and rubber. Top brands such as Unibond, Everbuild



0.5P EnerOne+ Outdoor Liquid Cooling Rack With the support of long-life cell technology and liquid-cooling cell-to-pack (CTP) technology, CATL rolled out LFP-based EnerOne in 2020, which features The EnerOne+Energy Storage products are capable of various grid applications, such as frequency regulation, voltage regulation, arbitrage, peak



For a mini glue gun, this 12-color collection of hot glue sticks offers crafters plenty of options for designing vibrantly hued creations. RELATED: The 11 Handiest Ways to Use a Hot Glue Gun 11.



When you're choosing an outdoor adhesive, there are a few factors you'll want to consider to ensure your project is a success. The first thing to think about is the type of materials you'll be bonding. Some adhesives work better with certain materials than others, so it's important to choose an adhesive that is compatible with the