

OUTSOURCING OF HIGHWAY PHOTOVOLTAIC PANEL INSTALLATION



The results show that it's helpful to identify the most suitable location for solar panel installation on highway fill slopes. Bk et al [46] proposed and evaluated the concept of ???



Solar panel cleaning costs: \$150???\$750. Tree trimming costs: \$250???\$700. Loose wiring cost: \$100???\$200. Hail damage repair cost: \$120???\$500 per panel. Cracked panel cost: \$150???\$500 per panel. Solar panel inverter replacement cost: \$1,000???\$2,000. Roof repair cost: \$150???\$7,000. Solar Panel Maintenance



) (The East Midlands Gateway Rail Freight Interchange and Highway Order 2016): The prior approval of the airport operator (acting as the statutory aerodrome safeguarding authority) must be obtained by the undertaker for the installation of any solar photovoltaic panels or apparatus within the authorised development, such approval not to



In this respect, this study conducts a case study on selecting the site for PV-panel installation in the vicinity of a highway (e.g., slopes) by integrating geographic information system (GIS) and



Solar Panels perform at optimum capacity when placed in direct sunlight. When you install your Solar Power system, try to position your photovoltaic panels directly under the noontime sun for maximum efficiency from your photovoltaic unit.. Before Installation, take care of any obstructions to sunlight. Remove all unnecessary obstructions and items such as ???

OUTSOURCING OF HIGHWAY PHOTOVOLTAIC PANEL INSTALLATION



Estimated Reading Time: 7 minutes Solar panel systems in Singapore are gaining traction as the most viable energy source in the renewable energy transition. With our limited land space and sunny, tropical climate, ???



Photovoltaic (PV) power generation has become an important clean energy generation source. In the context of transportation development and its very large energy demand, scholars have begun to use PV power generation technology on roads and their surrounding road spaces. Current research on PV power generation in road spaces has ???



Introduction to Photovoltaic Systems: Gain foundational knowledge and skills in the installation of photovoltaic panels and solar energy systems, including safety procedures and equipment handling. Health and Safety Practices: Adhere to safety protocols and regulations specific to the installation of photovoltaic panels, ensuring a safe working environment for oneself and others.



Section 2: The Photovoltaic PV System Design Process Solar Panel Placement. Effective PV system design involves strategic solar panel placement. Aim for maximum sun exposure all year round, considering the seasonal changes in the sun's trajectory. Commonly, this means south-facing panels in the northern hemisphere. System Sizing



Solar Panels: Photovoltaic panels that are firmly affixed to the surface of the road serve as the brains of solar-powered smart highways. These panels, which are frequently constructed of tough, tempered glass, are meant to bear the weight of automobiles while also absorbing sunlight and generating power.

OUTSOURCING OF HIGHWAY PHOTOVOLTAIC PANEL INSTALLATION



The solar photovoltaic (PV) power generation system (PGS) is a viable alternative to fossil fuels for the provision of power for infrastructure and vehicles, reducing greenhouse gas emissions and



In this respect, this study conducts a case study on selecting the site for PV-panel installation in the vicinity of a highway (e.g., slopes) by integrating geographic information system (GIS) and



It should receive sufficient sunlight and there should be no obstacles that may block the solar panel within a 5-meter radius of the site. For example, the installation site cannot be under a tree or near tall buildings, as ???



The solar photovoltaic (PV) power generation system (PGS) is a viable alternative to fossil fuels for the provision of power for infrastructure and vehicles, reducing greenhouse gas emissions and enhancing the sustainability ???



Case Study: solar panel installation for an average UK home ??? House type: Semi-detached ??? Solar panels: polycrystalline 4kW ??? Number of panels: 10-14 ??? Solar panel cost, including installation: ?7000.00 (Actual price ranges from ?5,000 to ?9,000) ??? Estimated annual output: 3600 kWh (South of the UK) ??? Estimated Smart Export Guarantee Tariff: ?50.00 (SEG ???)

OUTSOURCING OF HIGHWAY PHOTOVOLTAIC PANEL INSTALLATION



The complete guide to solar panel installation, built on over a decade of experience. Planning, designing, costing, installing and commissioning. Powering Change. Installing since 2010 ? 0118 951 4490 ? info@spiritenergy .uk. (Location formerly known as 44 ???



As a result, you can expect to generate \$1,200 by selling the inverter for an average solar panel installation project. The labor cost of installing a solar panel system can range from 20 to 40% of the system cost depending ???



Roofing highways with solar panels represents an advanced approach that could transform our existing road infrastructure into a multifunctional system for energy generation and enhanced safety.



Therefore, the application in the highway field is very necessary to promote the construction of distributed photovoltaic power generation system. Discover the world's research 25+ million members



Solar panel systems on homes are typically up to 4kWp. A system of this size can generate more than 3,000kWh per year. For comparison, a home using a "medium" amount of electricity gets through 2,700kWh a year on average, according to energy regulator Ofgem.

OUTSOURCING OF HIGHWAY PHOTOVOLTAIC PANEL INSTALLATION



46. Solar Panel Life Span Calculation. The lifespan of a solar panel can be calculated based on the degradation rate: $L_s = 1 / D$. Where: L_s = Lifespan of the solar panel (years) D = Degradation rate per year; If your solar panel has a degradation rate of 0.005 per year: $L_s = 1 / 0.005 = 200$ years

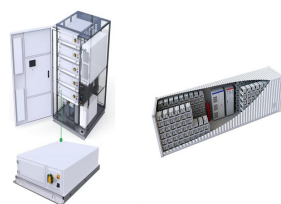
47. System Loss Calculation



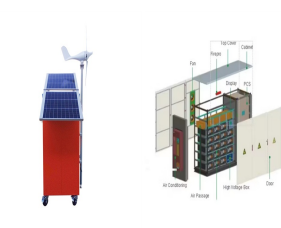
These technical drawings outline the specifications, dimensions, and installation guidelines for solar panels within the system. PV plan sets, which include solar panel drawings, are critical for ensuring the proper placement, alignment, and mounting of solar panels to optimize renewable energy production.



A company from Poland specialises in providing solar panel installation services. It can install either roof- or ground-mounted photovoltaic systems and pair them with energy storage systems. The firm can also assist the partner in selecting the best solution for his house, apartment building, commercial building, factory or any other location or facility.

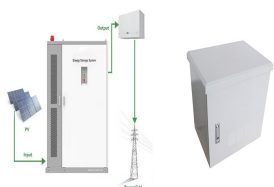


3. Explore incentives and rebates. Incentives and state and federal tax rebates can substantially cut your overall costs to install solar. The Federal Investment Tax Credit (ITC) alone can save you 30% on the upfront ???

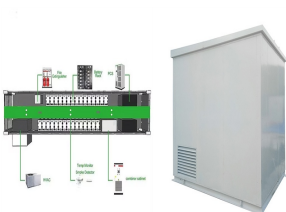


It is important to know which type of solar panel mounting system is the best one for you. This article explains each available option, while at the same time describes the technical process that involves its construction. By knowing how the installation is done, you will be able to choose the option that better suits your needs and

OUTSOURCING OF HIGHWAY PHOTOVOLTAIC PANEL INSTALLATION



Can I build my own Solar Panel System UK? - DIY Solar; Getting Solar Panel Quotes in the UK 2024; How much Space do I need for Solar Panels? UK Guide 2024; The Smart Export Guarantee (SEG) UK; Solar Panels for New Builds: A UK Guide for 2024; Solar Panels for Schools and Colleges in the UK; How Much Electricity Does a Solar Panel Produce, UK?



Utility-scale solar panel installations are massive???often between 500- and 30,000 times larger than a residential solar installation???and sell their electricity directly to utilities, meaning they can effectively provide power to tens of thousands of homes and businesses. To learn more about utility-scale solar panel installations, [click here](#).



By integrating the above key steps of the solar power generation evaluation, a basic assessment method for the PV power generation potential of highway slopes can be proposed as follows: (1) segment the alignment of ???