

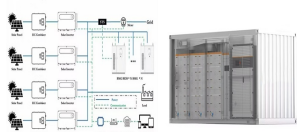
# PALAU ELTEK OUTDOOR



Rectifier Outdoor system 6kVA AC + 12,8-21kW DC. The Rectifier outdoor system combines both AC and DC feed into one common unit. Simultaneously it provides AC backup power for 230 Vac loads, and 48 Vdc power for DC loads and battery charging. Your message will be sent to your closest Eltek Office. To the top. Eltek in social media



The Outdoor Type 3 cabinet platform is designed for a variety of applications and can be tailored to fit your specific needs. This solution has a unique cube design that give flexibility to easily have various heights of cabinets. And as it is all based on the well proven Eltek technology, the Flatpack S family is the key for future needs



Eltek's Hybrid power core is based on the Flatpack2 product family, fully integrated into complete and flexible solutions with one single Smartpack2 controller monitoring all energy sources, flow and storage. Request a quote Contact us. Overview. Flatpack2 - Hybrid power core. The Hybrid power core has integrated battery distribution, DC load



The Rectifier outdoor system combines both AC and DC feed into one common unit. Simultaneously it provides AC backup power for 230 Vac loads, and 48 Vdc power for DC loads and battery charging. Rectifier Indoor system 6kVA AC ???



The IPack65 power system provides uninterrupted 48Vdc, either backed up by nearby IP65 free-standing Li-ion batteries or by normal indoor batteries in an outdoor cabinet. Alternatively, the system can be powered by a backed-up 400V AC or DC feed.



The document provides instructions for commissioning an Eltek rectifier system. It outlines connecting a laptop to the rectifier controller via LAN cable and using PowerSuite software. It then details setting various system parameters like voltage levels, alarms, rectifier settings, load and

# PALAU ELTEK OUTDOOR

---

battery configurations to activate features and properly standardize the rectifier system.

# PALAU ELTEK OUTDOOR



Since the launch the Flatpack2 family has expanded into a wide selection of power ratings and voltages. The Flatpack2 48V-60V/2000W HE is a cost efficient rectifier for 48V and 60V lead acid battery systems as well as 48V NiCad.



The galvanic isolated CAN bus can be connected to a supplying Eltek power system's control system allowing monitor and control of the DC/DC converters without adding a separate controller. Key features. Wide input range; OR-ing protection on output; Boost mode;



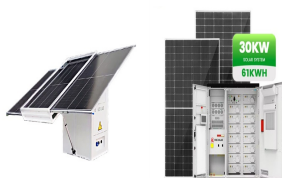
The galvanic isolated CAN bus can be connected to a supplying Eltek power system's control system allowing monitor and control of the DC/DC converters without adding a separate controller. Key features. Wide input range; OR-ing protection on output Boost mode High Efficiency Voltage keying Seamlessly integrated in control system



The Rectifier outdoor system combines both AC and DC feed into one common unit. Simultaneously it provides AC backup power for 230 Vac loads, and 48 Vdc power for DC loads and battery charging. Your message will be sent to your closest Eltek Office. To the top. Eltek in social media.



The Solar Extension Kit is a compact solution to house up to 2x Solar chargers and for use in new or existing Eltek power systems. Request a quote Contact us The front and rear MC4 connection mechanism enables easy on-site installation into both outdoor and indoor enclosures. Key features. Flatpack2 HE solar with MPPT; Hot pluggable modules



Built as a plug-and-play system, the Flatpack S 2U reduces installation time and enables cost-effective deployment. Eltek's Flatpack S high-efficiency rectifiers power the Flatpack S 2U, and typically achieve efficiency levels above 95 percent at 48Vdc output. When combined with

# PALAU ELTEK OUTDOOR

---

Eltek's advanced Smartpack S controller, the system

# PALAU ELTEK OUTDOOR



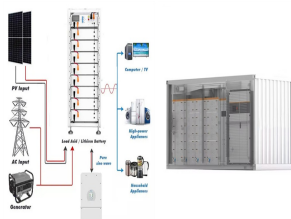
eltek ??? gr?terudveien 8 outdoor cabinet doc 234748.ds3 ??? rev10 key featuresreliability 19" equipment space optional thermal insulation dc power, telecom/industrial equipment and battery backup galvanized steel construction (aluminum upon request)



Eltek Outdoor Telecom Flatpack 2 Power and Equipment Cabinet. TSR ComSupply (347) 94.4% positive; Seller's other items Seller's other items; Contact seller; US \$3,500.00. or Best Offer. \$145.83 for 24 months with PayPal Credit \* Condition: New New. New. A brand-new, unused, unopened, undamaged item in its original packaging (where packaging ???



In the central office of your telecom network, The Eltek power systems secure continuous, safe and efficient operation of your business-critical applications. We are committed to telecom, and continuously pushing forward to help our customers build a smarter infrastructure with better energy utilization and a reduced cost of ownership of their



Furthermore, Eltek's expertise extends to the healthcare sector, where its reliable power solutions support medical imaging equipment, diagnostic devices, and patient monitoring systems. With a focus on precision and reliability, Eltek's products contribute to improved patient care and outcomes in healthcare facilities worldwide.



Outdoor Type 2 With durable construction the OutdoorType 2 power cabinet incorporates tailored thermal systems (fan/filters, air conditioners and heaters) that will keep even the most sensitive electronics functioning in extreme ???

