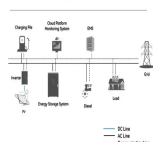


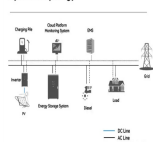
PARTY MEMBERS AMONG ENERGY STORAGE STUDENTS

System Topology



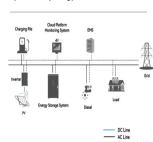
How do college students manage party members? At present, many college students are actively involved in the management of party members and the development of party members??? recommendation management. They are still in the stage of manual operation or manual management and recommendation.

System Topology



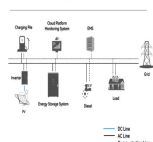
How to carry out the recommendation of the student party members? To carry out the recommendation of the student party members, the first step is to set up the basic settings and set the parameters to be collected. The second step is to collect all kinds of information of the students. These operations are all for the deep learning mode to be carried out at a later stage.

System Topology



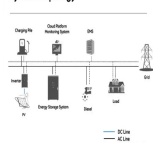
Do peers influence university students' energy-saving behaviors? However, previous studies have paid insufficient attention to the influence of peers on university students??? energy-saving behaviors. This paper attempts to examine the effect using a large-scale survey dataset conducted on students from Xiamen University in China and the classical linear-in-means model.

System Topology



What is student party member Development recommendation model? After implementing the student party member development recommendation model, the office information is digital information, no paper, and at the same time reduces the cost of information transmission, which can greatly save office expenses.

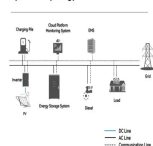
System Topology



How to improve party management in a school? Therefore, it is extremely urgent to systematically plan and construct the student party members??? development recommendation work, improve the party management level of our school and improve the efficiency of party affairs management, and realize the ???standardized, scientific and systematic??? information management of party organizations.

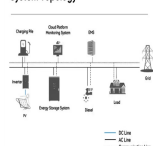
PARTY MEMBERS AMONG ENERGY STORAGE STUDENTS

System Topology



Do public policies promoting energy-saving behavior have a multiplier effect? Policy suggestions are put forward based on the conclusion of the study. Our estimates support the idea that public policies promoting energy-saving behavior can have a multiplier effect through interpersonal interaction. Students can be encouraged by peers to actively practice pro-environmental behaviors.

System Topology



The document stresses the need to amplify initiatives for enrolling party members among undergraduate students, to tackle new challenges with innovative approaches, continuously ???

Commercial and Industrial ESS

Air Cooling / Liquid Cooling

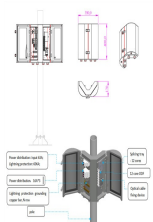
- Budget-Friendly Solution
- Renewable Energy Integration
- Modular Design for Flexible Expansion



Universities play a significant role in fostering energy efficiency and sustainability habits among the younger generation. As centres of knowledge and innovation, they are ???



Get the party started! Find everything you need on your shopping list, whether you browse online or at one of our party stores, at an affordable price. Skip to main. Find Party City Stores Still Open! See Locations Find a Store. Edit ???



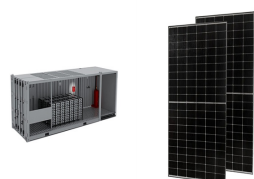
Our findings help to uncover the unique socio-political environment around ES in China, how audiences are informed, and the support provided to stakeholders" strategies. 1. ???

PARTY MEMBERS AMONG ENERGY STORAGE STUDENTS



The Karlsruhe Institute of Technology (KIT), the Ulm University (UUI) and the Centre for Solar Energy and Hydrogen Research Baden-W?rttemberg (ZSW) strengthen their collaboration in the area of ???

,,,,, ???



the country, they injected fresh energy into the growth of the Party and the found- Consequently, the proportion of Party members among college students increased. from 0.8% in 1990 to 2.5% in



From February 16 to 17, 2023, the 2022 National Energy Internet Conference and the 2022 Academic Annual Meeting of Energy Internet Committee of the Chinese Society for Electrical Engineering (CSEE), co-hosted Tsinghua University, ???