

# PHOTOVOLTAIC BRACKET BOLT INSTALLATION DIAGRAM



Why should you install a solar panel bracket? The purpose of installing the bracket is to better fix the solar panel. If there is a more convenient and feasible method to fix the solar panel. PVMars will definitely recommend it to you, and effective solutions are based on solar panels' characteristics and your on-site installation environment.



What is a power rail PV module mounting system? The PV module mounting system engineered to reduce installation costs and provide maximum strength for parallel-to-roof, tilt up, or open structure mounting applications. The POWER RAIL mounting system is designed with the professional PV solar installer in mind.



What materials are used for mounting base brackets? Mounting base brackets are fabricated from Series 6000 structural marine grade aluminum. 5/16" hardware included. "L" Feet are fabricated from high-strength 3/16" aluminum and include a vertical slot for adjusting to irregular surfaces. 5/16" coated hardware included. "L" Feet are fabricated from high-strength 3/16" aluminum.



Bracket Determine the type of roof fastening The TriSole systems can be mounted on the roof with four different sub-structures: ??? with cross rail connectors ??? with brackets ??? with hanger bolts and brackets ??? only with hanger bolts Now mount the first row of the TriSole tri-angular mounting system according to the selected sub-structure.



Pros-Reduced energy costs: Rooftop solar installations are the best way to reduce or even eliminate your electric bills over the long term.-Increase in property value: Studies have shown that homes with rooftop solar systems have a higher resale value than those without.-Environmental benefits: Generating your own power with rooftop solar helps reduce your ???

# PHOTOVOLTAIC BRACKET BOLT INSTALLATION DIAGRAM



This document provides safety and installation instructions for the UL Listed SunPower AC photovoltaic (PV) modules described herein, all of which bear the UL logo on the product label: 1.1 Disclaimer of Liability The installation techniques, handling and use of this product are beyond company control.



To ensure brackets are installed in a straight line, install a single ProteaBracket on each end of the roof at a measured, consistent distance from the bottom edge of the roof. Use a string line ???



1 Mounting bracket 2 5/16-18 bolts 2 washers-flat 2 washers-split locking  
Proper operation of your brakes is essential for your safety and the safety of others. Any brake service should be performed **ONLY** by persons experienced in the installation and proper operation of brake systems. It is the responsibility of the person



In the quest for renewable energy solutions on a global scale today, PV brackets, as the core components of solar power generation systems, play an indispensable role. CHIKO offers customized PV bracket design services that determine the optimal installation angle and direction through precise calculations and simulations to capture the



Fully structural bonding splice with fast and easy single bolt installation. The Bonding Pop-On Universal Mid Clamps accommodate PV module frame heights ranging from 30mm to 50mm. How does it install: ProteaBracket is a universal bracket for attachment of rail or the S-5-PVKIT to trapezoidal-ribbed (exposed-fastened metal profiles), with

# PHOTOVOLTAIC BRACKET BOLT INSTALLATION DIAGRAM



Head Bolts to secure the pulley bracket Use M10 x 10 Allen Head Set Screw 145? Spring 120? Spring. Installation Steps PV-10PX / PV-10HPX 23 K. Lift the carriages up manually and lock them on the 1st set of locks (See Fig. 28). Fig. 28. Installation Steps PV-10PX / PV-10HPX 33



In this guide, we'll use EcoFlow's 400W rigid solar panel as an example. With an industry-leading 23% efficiency rating and an IP68 waterproof rating, EcoFlow's rigid solar panels are among the highest-performing and ???



Mounting Brackets INSTALLATION DIAGRAM The hook and U-tube are connected with Fix the assembly at the lower end of the railing through the bottom rail and the bottom railfastener. The photovoltaic module is adjusted to a suitable Angle by adjusting the length of Mounting Brackets Hook fixing bolt M8\*90 external hexagon bolt With 2 flat



All brackets should have butyl tape or a high-quality caulking such as polyurethane or polysulfide, to seal any bolt penetrations and under struts, brackets, or mounting feet. If standoff mounts or other brackets can be installed before the roofers install the finished roof, roofers can more easily shingle or tile around the flashing and may install the flashing for the mounts.

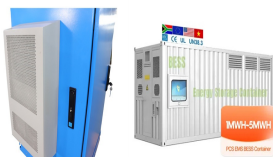


Step 2: Secure the mounting-bracket with M8 bolts and nuts. FIG 3-8 Install the wall bracket 3.4.3 Wall-Mounted Installation M8 or M10 expansion bolts can be used to fix the wall bracket on the wall. (Note: No expansion bolt is supplied) Mounting Steps Step 1: Level the assembled mounting-bracket by using a level, and mark the positions for

# PHOTOVOLTAIC BRACKET BOLT INSTALLATION DIAGRAM



Installation manual Version 2.15 page 10 of 16 View of a ready-prepared photovoltaic module for a balcony power plant with the Solar-Hook mounting bracket and the inverter. Figure 7/prepared solar module with 3 SOLAR-HOOK mounting brackets and inverter



3) Do not install modules in the position where may be soaked or constantly exposed to sprinklers or the fountain. 4) Do not install modules near open flame or flammable objects. 5) Do not install modules directly on the roof or the wall. The fixed bracket must be ???



For Use With Side-Mounted Rails for PV When using a side-mounted rail for PV, flip the slotted L-flange upside down, causing the shorter slotted side (the side without the square hole) to be flush against the ProteaBracket base. In this position, the hinge bolt will lock into the square hole on the slotted L-flange. Tighten the hinge bolt.

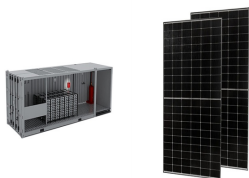


This page for standard Solar PV slate mounting bracket: K2 Part number P1000373 used for mounting small or large photovoltaic systems onto a slate roof. The ease in which these rail fixings are assembled is unique. Base plate 40 x 250mm | Bracket height 60mm | Total height 72mm | Bracket depth 72mm.



Step 2: Secure the mounting bracket with M8 bolts and nuts. FIG 3-8 Install the wall bracket 3.5.3 Wall-Mounted Installation M8 or M10 expansion bolts can be used to fix the mounting bracket on the wall. (Note: No expansion bolt is supplied) Mounting Steps Step 1: Level the assembled mounting bracket by using a level, and mark the positions for

# PHOTOVOLTAIC BRACKET BOLT INSTALLATION DIAGRAM



The installation of PV modules requires a great degree of skill and should only be performed by a qualified fastener. Do not damage the surrounding PV modules or mounting structure when replacing a PV module. Bind



The PV module mounting system engineered to reduce installation costs and provide maximum strength for parallel-to-roof, tilt up, or open structure mounting applications. The POWER RAIL mounting system is designed with the professional PV solar installer in mind. The top-clamping rails utilize a single tool with a revolutionary



U-bolts (not included). See figure 3. Step1. Attach the PV module to the mounting bracket using the nuts, bolts, washers, and lock washers provided. See figure 1. Caution: If additional holes ???



(3) Water surface type bracket. With the continuous promotion of distributed photovoltaic power generation projects, making full use of the sea, lakes, rivers and other water surface resources to install distributed photovoltaic power stations, the implementation of new forms of photovoltaic agriculture, such as fishery and light complementation, is another way to ???



RISEN PV MODULE INSTALLATION AND MAINTENANCE MANUAL  
Update the installation diagram, add the flat single shaft installation method, and delete some installation methods Pei Shichao 2020.08  
A/2[2020] Chapter 8.1.1 Bolts installation? 1/4 ?

# PHOTOVOLTAIC BRACKET BOLT INSTALLATION DIAGRAM



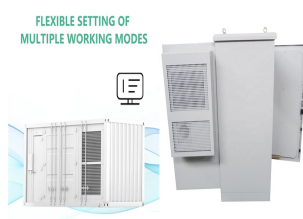
5.1 Tile Interface Installation 5.2 Rail Installation 5.3 PV Module Installation 5.4 Tin Interface Installation 5.5 Side Channel Cover for Cutter-Rail Installation(optional) 5.6 Hanger Bolt Installation 5.7 Roof Hook Extender Installation 6. Standard Certification Letter 7. Adjustable Tile Brackets Certification Letter 8. Buildex C5 Screw



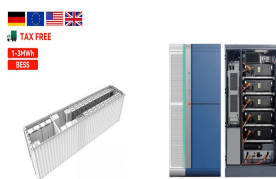
Safety Switch bracket Safety Switch for single phase inverter 3 -7.6 kW . a mounting bracket. 5. Install the mounting bracket on the wall with the flat side of the bracket is at the bottom. 6. Hang the inverter on the bracket: Align the two indentations in the inverter enclosure with the two triangular mounting tabs of the bracket, and lower the



The installation selection of photovoltaic ground brackets is mainly based on factors such as the fixing method of the bracket, terrain requirements, material selection, and the weather resistance, strength and stiffness of the bracket. First of all, there are many fixing methods, such as pile foundation method (direct burial method), concrete block weight method, pre-embedded ???



Corner brackets are only for aluminum-framed, rigid solar panels. They don't work with flexible panels. To install these brackets, you'll need to place them on all spots on the panel, mark holes, and drill them through each marked area. Then, fasten the brackets to the solar panel using the provided bolts and nuts.



Harnessing Solar Power with Roof-Mounted Panels. Ballasted mounts are often made of concrete blocks or metal brackets filled with ballast material such as gravel or concrete. These incentives can help offset the initial installation costs and make solar power more affordable. It's important to research and take advantage of any



The photovoltaic supporting structure must be strong and reliable, and can withstand such external effects as atmospheric erosion, wind load and other external effects. It should have safe and reliable installation, be able to achieve maximum use effect with minimum installation cost, be almost maintenance-free, and have reliable maintenance.