

# PHOTOVOLTAIC ENERGY STORAGE SYSTEM CONFIGURATION



With the development of the photovoltaic industry, the use of solar energy to generate low-cost electricity is gradually being realized. However, electricity prices in the power grid fluctuate throughout the day. Therefore, it is necessary to integrate photovoltaic and energy storage systems as a valuable supplement for bus charging stations, which can reduce ???



The optimal configuration of energy storage capacity is an important issue for large scale solar systems. a strategy for optimal allocation of energy storage is proposed in this paper. First various scenarios and their value of energy storage in PV applications are discussed. Then a double-layer decision architecture is proposed in this article. Net present value, investment payback period



However, the intermittence of renewable energy and the different operating characteristics of facilities present challenges to IES configuration. Therefore, a two-stage decision-making framework is developed to optimize the capacity of facilities for six schemes comprised of battery energy storage systems and hydrogen energy storage systems.



By constructing four scenarios with energy storage in the distribution network with a photovoltaic permeability of 29%, it was found that the bi-level decision-making model proposed in this paper



The results show that the optimized photovoltaic and energy storage system can effectively improve the photovoltaic utilization rate and economic of the microgrid system. The model can provide an effective method for the design of photovoltaic and energy storage configuration schemes for microgrids in rural areas.

# PHOTOVOLTAIC ENERGY STORAGE SYSTEM CONFIGURATION



The quality of power output from photovoltaic (PV) systems is easily influenced by external environmental factors. To mitigate the power fluctuations that can impact the quality of electricity in the grid, this paper establishes an optimization model for capacity configuration of hybrid energy storage systems based on load smoothing.



The experimental results show that the distributed photovoltaic absorption control using this method has lower load requirements, can effectively reduce the exchange power of the interconnection line, and improve the configuration scale, system reliability, and economy of the photovoltaic energy storage system.



The capacity configuration of energy storage system has an important impact on the economy and security of PV system [21]. Excessive capacity of energy storage system will lead to high investment, operation and maintenance costs, while too small capacity will not fully mitigate the impact of PV system on distribution network. In addition



The results show that, compared to the systems with a single pumped hydro storage or battery energy storage, the system with the hybrid energy storage reduces the total system cost by 0.33% and 0.88%, respectively. Additionally, the validity of the proposed method in enhancing the economic efficiency of system planning and operation is confirmed.



The optimal configuration of energy storage capacity is an important issue for large scale solar systems. a strategy for optimal allocation of energy storage is proposed in this paper. First ???

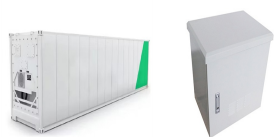
# PHOTOVOLTAIC ENERGY STORAGE SYSTEM CONFIGURATION



Yin Y et al. studied the collaborative management of PV power generation from the perspective of the value chain, and constructed a PV energy storage system centered on a PV power generation subsystem and an energy storage subsystem and used a hybrid particle swarm algorithm (HPSO) to determine the optimal configuration of the system [20].Kong



This paper develops an ESS optimization method to estimate the optimal capacity and locations of distributed ESS supporting the voltage regulation of a distribution network. The electrical ???



Hern?ndez et al. [21] argued that in PV self-generation and self-consumption systems, there is a need to focus on the optimal design sizing of the storage system, and therefore developed an analytical technique to derive the optimal configuration sizing of the hybrid storage, which not only improves the PV self-consumption rate but also



Coordinated control technology attracts increasing attention to the photovoltaic???battery energy storage (PV-BES) systems for the grid-forming (GFM) operation. However, there is an absence of a unified perspective that reviews the coordinated GFM control for PV-BES systems based on different system configurations. This paper aims to fill the gap ???

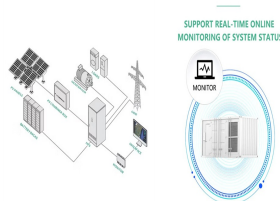


Abstract: Focusing on the subject of third-party enterprises configuring the photovoltaic energy storage system for the user side, this paper synthetically considers numerous elements, for ???

# PHOTOVOLTAIC ENERGY STORAGE SYSTEM CONFIGURATION



Based on the photovoltaic output of the station area, the charging and discharging capacity of the energy storage system, and the orderly charging plan of residential electric vehicles, a local



Currently, some experts and scholars have begun to study the siting issues of photovoltaic charging stations (PVCSSs) or PV-ES-I CSs in built environments, as shown in Table 1. For instance, Ahmed et al. (2022) proposed a planning model to determine the optimal size and location of PVCSSs. This model comprehensively considers renewable energy, full power ???



This paper considers the annual comprehensive cost of the user to install the photovoltaic energy storage system and the user's daily electricity bill to establish a bi-level ???



## 4 ENERGY STORAGE CAPACITY CONFIGURATION MODEL 4.1

Objective function. The introduction of the phase change energy storage in the building photovoltaic system can change the electrical load curve for buildings, making it closer to the photovoltaic power generation curve, which can increase the photovoltaic absorption rate.

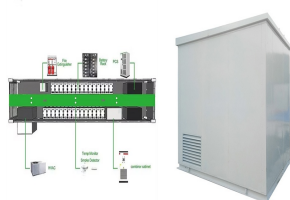


In 2020 Hou, H., et al. [18] suggested an Optimal capacity configuration of the wind-photovoltaic-storage hybrid power system based on gravity energy storage system. A new energy storage technology combining gravity, solar, and wind energy storage. The reciprocal nature of wind and sun, the ill-fated pace of electricity supply, and the pace of commitment of ???

# PHOTOVOLTAIC ENERGY STORAGE SYSTEM CONFIGURATION



After comparing the economic advantages of different methods for energy storage system capacity configuration and hybrid energy storage system (HESS) over single energy storage system, a method based on improved moving average and ensemble empirical mode decomposition (EEMD) to smooth wind power fluctuations is proposed aiming at the optimal ???



The development of photovoltaic (PV) technology has led to an increasing share of photovoltaic power stations in the grid. But, due to the nature of photovoltaic technology, it is necessary to use energy storage equipment for better function. Thus, an energy storage configuration plan becomes very important. This paper proposes a method of energy storage configuration based ???



To enhance the configurability of photovoltaic energy storage within distribution network systems and foster synchronized development of power sources and loads, a source-load coordinated approach for optimal photovoltaic energy storage configuration in distribution networks is introduced.



The on-grid WPS-HPGS primarily comprises a photovoltaic generation system, wind generation system, energy storage system, electrical load, and control system, as depicted in Fig. 2. The photovoltaic and energy storage systems are linked to the DC bus via a DC/DC converter, whereas the wind power is connected to the AC bus through an AC/DC/AC

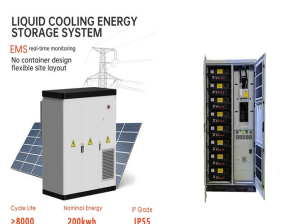


These distributions are compared to Weibull and Beta distributions. The wind???solar energy storage system's capacity configuration is optimized using a genetic algorithm to maximize profit. Different methods are compared in island/grid-connected modes using evaluation metrics to verify the accuracy of the Parzen window estimation method.

# PHOTOVOLTAIC ENERGY STORAGE SYSTEM CONFIGURATION



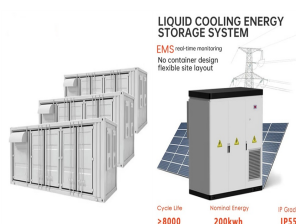
Application of energy storage capacity configuration. In solar energy storage systems, power scheduling plays a vital role with the primary goal of maximizing energy consumption efficiency and



In order to achieve energy savings and promote on-site integration of photovoltaic energy in electrified railways, a topology structure is proposed for the integration of photovoltaic (PV) and the energy storage system (ESS) into the traction power supply system (TPSS) based on a railway power conditioner (RPC). This paper analyzes the composition and ???



The best configuration of energy storage system is a vital problem in designing a new power system. For the one with photovoltaic power production, a capacity configuration of the energy storage system in a hybrid energy storage system with ???



Highlights. 1) This paper starts by summarizing the role and configuration method of energy storage in new energy power station and then proposes a new evaluation index system, including the solar curtailment rate, forecasting accuracy, and economics, which are taken as the optimization targets for configuring energy storage system in PV power stations.



In order to make full use of the photovoltaic (PV) resources and solve the inherent problems of PV generation systems, a capacity optimization configuration method of photovoltaic and energy storage hybrid system considering the whole life cycle economic optimization method was established. Firstly, this paper established models for various of ???



# PHOTOVOLTAIC ENERGY STORAGE SYSTEM CONFIGURATION



With the large-scale access of renewable energy, the randomness, fluctuation and intermittency of renewable energy have great influence on the stable operation of a power system. Energy storage is considered to be an important flexible resource to enhance the flexibility of the power grid, absorb a high proportion of new energy and satisfy the dynamic ???



Rooftop photovoltaic (PV) systems are represented as projected technology to achieve net-zero energy building (NEZB). In this research, a novel energy structure based on rooftop PV with electric-hydrogen-thermal hybrid energy storage is analyzed and optimized to provide electricity and heating load of residential buildings. First, the mathematical model, ???



For example, residential grid-connected PV systems are rated less than 20 kW, commercial systems are rated from 20 kW to 1MW, and utility energy-storage systems are rated at more than 1MW. Figure 2. A common configuration for a PV system is a grid-connected PV system without battery backup. Off-Grid (Stand-Alone) PV Systems