

PHOTOVOLTAIC INVERTER DEBUGGING METHOD



- 1 PCB Module
- 2 Battery room
- 3 DC side circuit breaker
- 4 Load side circuit breaker
- 5 CPV side circuit breaker
- 6 CPV side circuit breaker
- 7 MPPT
- 8 CPV side circuit breaker
- 9 High V&L Box
- 10 DC side circuit breaker
- 11 DC side circuit breaker
- 12 LCD display screen

What is a fault detection method for photovoltaic module under partially shaded conditions? A fault detection method for photovoltaic module under partially shaded conditions is introduced in . It uses an ANN in order to estimate the output photovoltaic current and voltage under variable working conditions. The results confirm the ability of the technique to correctly localise and identify the different types of faults.



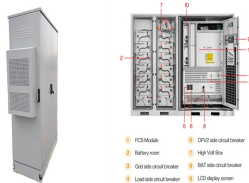
- 1 PCB Module
- 2 Battery room
- 3 DC side circuit breaker
- 4 Load side circuit breaker
- 5 CPV side circuit breaker
- 6 CPV side circuit breaker
- 7 MPPT
- 8 CPV side circuit breaker
- 9 High V&L Box
- 10 DC side circuit breaker
- 11 DC side circuit breaker
- 12 LCD display screen

How to diagnose a fault in a PV power generation system? The method includes as inputs the solar irradiation and module temperature of the PVM and then using this information together with the characteristics captured from the PV power generation system, provide fault diagnosis, including P_m , I_m , V_m and V_{oc} of the PVA during operation. Investigated faults are reported in Table 8.



- 1 PCB Module
- 2 Battery room
- 3 DC side circuit breaker
- 4 Load side circuit breaker
- 5 CPV side circuit breaker
- 6 CPV side circuit breaker
- 7 MPPT
- 8 CPV side circuit breaker
- 9 High V&L Box
- 10 DC side circuit breaker
- 11 DC side circuit breaker
- 12 LCD display screen

How to improve fault detection in PV systems? Robust encryption, secure communication protocols, and anomaly detection for cybersecurity events should be integrated into fault detection frameworks. Finally, improving fault detection in PV systems through distributed or federated learning methods holds great promise for future research.



- 1 PCB Module
- 2 Battery room
- 3 DC side circuit breaker
- 4 Load side circuit breaker
- 5 CPV side circuit breaker
- 6 CPV side circuit breaker
- 7 MPPT
- 8 CPV side circuit breaker
- 9 High V&L Box
- 10 DC side circuit breaker
- 11 DC side circuit breaker
- 12 LCD display screen

Are model-based fault detection methods effective in PV systems? Additionally, the review emphasizes the significance of data acquisition and monitoring in PV systems for successful fault detection. The application of model-based fault detection methods in PV systems, while demonstrating efficacy, is not without its limitations.



- 1 PCB Module
- 2 Battery room
- 3 DC side circuit breaker
- 4 Load side circuit breaker
- 5 CPV side circuit breaker
- 6 CPV side circuit breaker
- 7 MPPT
- 8 CPV side circuit breaker
- 9 High V&L Box
- 10 DC side circuit breaker
- 11 DC side circuit breaker
- 12 LCD display screen

Can a fault analysis tool be used for building integrated PV systems? Hachana et al. developed a diagnosis tool for Building Integrated PV (BIPV) systems, based mainly on a look-up table. The designed tool can be used for detecting possible faults in PVA by analysing the I-V characteristics. Several fault scenarios have been carried out.

PHOTOVOLTAIC INVERTER DEBUGGING METHOD



Can PV circuit simulation be used for fault detection? Stellbogen D. Use of PV circuit simulation for fault detection in PV array fields. In: Proceedings of the 20th IEEE: Photovoltaic Specialists Conference, 1993, p. 1302???. Ye Z, Lehman B, de Palma JF, Mosesian J, Lyons R. Fault analysis in solar PV arrays under: Low irradiance conditions and reverse connections.



Khelifi et al. [11] proposed a control method for PV inverters based on multilevel fast capacitors, which not only reduced the fluctuation of the output power, but also significantly reduced the total harmonic distortion in the grid current by using a Kalman- based high-gain observer to estimate the capacitor voltage. A novel cascaded H



the active methods may increase as well [17], [19]. C. Sandia frequency shift The method used in this paper was created by the Sandia National Laboratories, USA, and is known as the Sandia Frequency Shift (SFS) method for islanding detection. This method introduces small perturbations in the AC output current of the inverter, as shown in Fig. 2.



To ensure the reliable delivery of AC power to consumers from renewable energy sources, the photovoltaic inverter has to ensure that the frequency and magnitude of the generated AC voltage are



Moreover, the passivity based decoupling control scheme proposed in this paper for TNPC PV grid-connected inverter is with simple structure, easily debugging and realization in engineering.

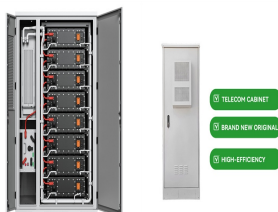
PHOTOVOLTAIC INVERTER DEBUGGING METHOD



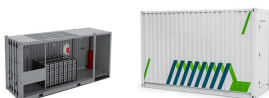
While retaining key information for diagnosis, the method is practical with low energy consumption and latency under the framework of edge computing. In this paper, to diagnose IGBT open-circuit faults of PV inverters, we propose a data-driven FDD method based on CS and CNN (CS-CNN) in edge computing scenarios. First, three-



1 ? This study addresses the critical issue of fault diagnosis in photovoltaic (PV) arrays, considering the increasing integration of distributed PV systems into power grids. The ???



The configuration of paralleled inverter system is shown in Fig. 1. The system is composed of two single-stage full-bridge inverters in parallel, where the inverter 1 connects with the PV cells and inverter 2 connects with an equivalent dc power supply which may be a dc-link bus from other converter or source (non-renewable energy sources (NRESs), such as energy ???

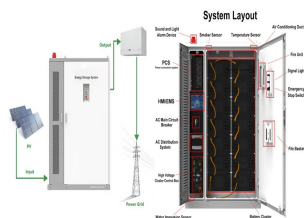


The PV-grid connected power inverter is a necessary part of the PV to electrical energy conversion system []. The quality of the voltage depends upon three phenomenons of voltage harmonics, voltage dips or swells and ???



<p>In general, the power distribution of a parallel inverter is achieved by the use of droop control in a microgrid system, which consists of PV inverters and non-regeneration energy source inverters without energy storage devices in an islanded mode. If the shared load power is no more than the available maximum PV inverter output power, then there is a power waste for the PV ???

PHOTOVOLTAIC INVERTER DEBUGGING METHOD



Aly and H. Rezk [19] in 2021 proposed a fuzzy logic-based fault detection and identification method for open-circuit switch fault in grid-tied photovoltaic inverters. Bucci et al. [20] in 2011



To tackle these issues, a data-driven diagnosis method based on compressed sensing (CS) and convolutional neural network (CNN) is proposed for open-circuit faults of PV inverters.



With the gradual development of photovoltaic power generation system in Ningxia, the photovoltaic inverter is used as network interface of photovoltaic power generation unit [1, 2], and it is particularly important to ensure its operation safely. Currently, the three-level inverter is widely used in photovoltaic power generation system.



Grid-tied PV inverters can be categorized into isolated and non-isolated types. Due to the presence of transformers, isolated PV inverters suffer from drawbacks such as larger sizes and lower system efficiency. Non-isolated PV inverters address these issues but introduce leakage current concerns due to the absence of electrical isolation.



1 Introduction. Photovoltaic (PV) power generation, as a clean, renewable energy, has been in the stage of rapid development and large-scale application [1 ??? 4]. Grid-connected inverter is the key component of PV generation system, which plays a decisive role in the transient characteristics of PV generation system.

PHOTOVOLTAIC INVERTER DEBUGGING METHOD



The insulated gate bipolar transistor (IGBT) is the core part of inverters and the root source of PV inverter failures. How to effectively diagnose the IGBT faults is critical for reliability, high ???



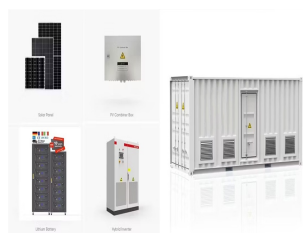
An important technique to address the issue of stability and reliability of PV systems is optimizing converters' control. Power converters' control is intricate and affects the overall stability of the system because of the interactions between different control loops inside the converter, parallel converters, and the power grid [4,5]. For a grid-connected PV system, ???



Therefore, PV system (PVS) fault diagnoses are crucial for PV power plant reliability, efficiency, and safety. Many fault diagnosis methods and techniques for PVS components have been ???



The grid-connected PV system comprises a PV source, a DC-DC boost converter and a voltage source inverter. The maximum power point tracking is achieved using Particle Swarm Optimization (PSO).



DC arc faults are dangerous to photovoltaic (PV) systems and can cause serious electric fire hazards and property damage. Because the PV inverter works in a high???frequency pulse width modulation (PWM) control mode, the arc fault detection is prone to nuisance tripping due to PV inverter noises. An arc fault detection method based on the ???

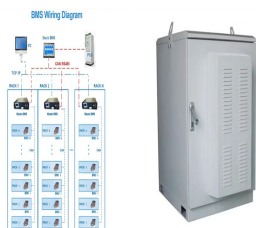
PHOTOVOLTAIC INVERTER DEBUGGING METHOD



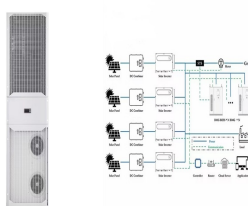
The proposed direct maximum power point tracking method is designed for single-phase single-stage grid-connected PV inverters and is based on estimating the ripple of the instantaneous PV power and voltage, using a second-order generalized integrator-based quadrature signal generator. A direct maximum power point tracking (MPPT) method for PV ???



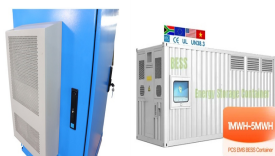
Aiming at the problem of noise easily polluting the voltage measurement link of an inverter DC bus in photovoltaic grid, an improved linear active disturbance rejection control technology based on



The fault prognostics of the photovoltaic (PV) power generation system is expected to be a significant challenge as more and more PV systems with increasingly large capacities continue to come into existence. The PV ???



Photovoltaic (PV) inverter plays a crucial role in PV power generation. For high-power PV inverter, its heat loss accounts for about 2% of the total power. If the large amount of heat generated during the operation of the inverter is not dissipated in time, excessive temperature rise will reduce the safety of the devices. This



Due to the traditional grid-connected current control method of single Proportional Integral (PI) and Repetitive Control (RC) strategies, the photovoltaic inverter output current will have a distortion problem, which can not only maintain the stability of the whole photovoltaic system, but also the current quality of the photovoltaic inverter grid-connected system is ???

PHOTOVOLTAIC INVERTER DEBUGGING METHOD



The connection of PV inverters to the grid without transformers leads to serious EMI problems that may affect the electric systems in the neighbourhood of the PV installation. In this study, a conducted EMI-based comparative study was carried out between two single-phase transformerless grid-connected PV inverters, namely, H5 and oH5.



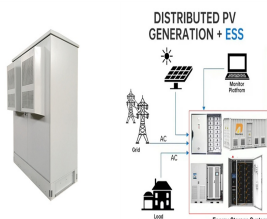
1 INTRODUCTION. With increasing attention to energy shortages and sustainable development, photovoltaics (PVs) are widely built and applied as one of the main ways to use solar energy [] PV systems, once inverter faults are not detected in time, it will severely affect the system reliability, and even cause fires [2, 3].For example, there were over ???



no report about the application of DE to identify PV inverter controller parameters. Considering the facts above, this paper presents a two-step parameter identification method for a typical PV inverter, which contains outer voltage loop and inner current loop. The first step is to identify all voltage loop parameters and the proportional



The aim of this research is to study the micro inverter technology, where the inverter is placed on each photovoltaic (PV) module individually in comparison to the common string or central inverters. In the already existing string and central inverters, several strings of PV modules are combined in order to achieve the power required from the inverter to operate.



Debugging specification 6.3 Introduction of protection function of photovoltaic inverter (1) Sleep function Under the photovoltaic mode, when the dc bus voltage is less than F12.11, the frequency converter will enter the sleep state and the ???

PHOTOVOLTAIC INVERTER DEBUGGING METHOD

Commercial and Industrial ESS

Air Cooling / Liquid Cooling

- Budget-Friendly Solution
- Renewable Energy Integration
- Modular Design for Flexible Expansion



After the system reaches a steady state, the simulated grid-connected PV system delivers output power of around 4 kW as shown in Fig. 5, and the system can operate efficiently and stably with a good power factor. Figure 6 shows the grid-connected output voltage, with two cycles of waveform displayed, and the waveform is stable and normal. Figure 7 ???



Abstract: Conventional photovoltaic micro-inverters use large electrolytic capacitors to balance the power pulsation with twice of the grid frequency, which will affect the lifetime of the inverter. This paper proposes a novel three-port micro-inverter with active power decoupling circuit and its control strategy. The proposed inverter reduces the sizes of the DC input capacitor and ???