

PHOTOVOLTAIC PANEL C-SHAPED STEEL HOLE SPACING



Most of us are familiar with what solar panels look like, but they are only one piece of this renewable energy puzzle. A key component of any solar panel system is its solar panel racking, even if you can't see it easily after installation. A proper solar energy system will need everything from batteries to store additional energy to solar panel mounts for attaching ???



Throughout this whirlwind tour of mounting solar panels, consider the best angle for your solar panels and you may want to explore the appropriate spacing gaps between each panel. Don't forget, the kind of stands ???



Based on the research characteristics of the C-shaped steel structure of the photovoltaic agricultural greenhouse, the stress and strain under the design load of the solar cell module support are



Good write up, Does this equation for determining row width hold good for single axis tracked panel rows which run north south. The panels in each row tilt maximum +55/-55 towards the sun at sunrise and sunset. Applying this height difference becomes $32.28 \approx 32$, module spacing = 105, minimum module spacing = 75



Rails, clamps, splices, and mounting devices are UL2703 Listed for mounting flat-plate Photovoltaic Modules and Panels ??? Conforms to STD UL 2703 (2015) Standard for Safety First Edition: Mounting Systems, Mounting Devices, Clamping/Retention Devices, and Ground Lugs for Use with Flat-Plate Photovoltaic Modules and Panels.



C-Stud framed steel walls are a popular choice in modern construction due to their strength, durability, and ease of installation. C-Studs are steel members with a channel-shaped cross-section, resembling the letter "C". These are vertically aligned between floor and ceiling tracks. C-Stud Framed Steel Walls are constructed with stud sizes of 3.625", 5.5" (9.2, ???



Web: <https://www.twojaelektryka.com.pl>

PHOTOVOLTAIC PANEL C-SHAPED STEEL HOLE SPACING



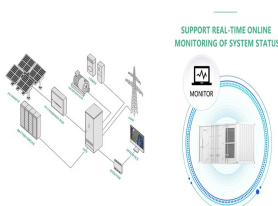
Follow manufacturer guidelines and specifications for proper attachment of solar panels. Solar panel mounting strut channels. Also known as strut or unistrut channels, these metal channels have a C-shaped cross-section. There are evenly-spaced holes for bolts, nuts, and fasteners along the length of the channel. These mounting strut channels



It is a metal piece that acts as a common connection point for different solar panels made up of solar panels. The transfer bar is responsible for collecting and transmitting the direct current produced by the solar panels to the inverter, which transforms the direct current into usable alternating current. The structure of a solar panel is



In the present paper, performance and exergy analysis for a vapor compression refrigeration system (VCRS) operating with eco-friendly refrigerants such as R1234ze and R1234fyare tested under



3. PV Array Spacing on Pitched Roofs. When installing PV systems on pitched roofs, such as those made of color steel tiles or ceramic tiles, the installation method typically follows the natural slope of the roof. In these cases, the spacing between rows of panels can be determined by considering a maintenance corridor that facilitates easy



Mounting systems are essential for the appropriate design and function of a solar photovoltaic system. They provide the structural support needed to sustain solar panels at the optimum tilt, and can even affect the overall temperature of the system.

PHOTOVOLTAIC PANEL C-SHAPED STEEL HOLE SPACING



The effective row spacing between the panels is decided by, Panel Tilt (??) Panel width (w) Height difference (H) Shadow angle and Azimuth angle(??) The Tilt angle of a panel varies with the location of the roof and is the most significant factor in deciding the row spacing. It is the angle between the solar panel and the roof base.



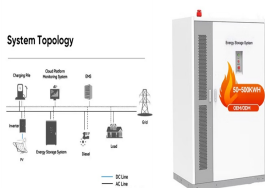
Spacing illustrations are based upon mounting solar panels measuring 1675x1001x31, using two frames secured directly to a completely flat roof (0?) in two parallel rows both facing due south. We have assumed that no shading on the panels is acceptable i.e no self shading even at the winter solstice, this would be a particularly important consideration for off-grid systems or any ???



Mounting Rail Spacing 25% 25% 50% Mounting Rails Allow 35mm for End Clamp at each end Mid Clamp gap 20mm H The mounting rails should be spaced apart as above. For example, using a 1.6m high panel, the rails should be spaced approx. 0.8m apart and the panels should be clamped so that they overhang the rails by 0.4m at the top and bottom. Roof



IronRidge is a global leader in solar racking founded in the mid-1990's and has since supported the growth of the industry by developing code-compliant racking solutions for roof and ground mount solar installations. The company's racking components are designed and tested to withstand extreme weather conditions and are certified for compliance with the latest ???



When designing a solar power system, one of the key factors that determine performance is the distance between solar panel rows. Proper spacing ensures that panels get maximum sunlight throughout the When designing solar installations, calculating the distance between solar panel rows is crucial to maximize energy output and avoid shading. Shading ???

PHOTOVOLTAIC PANEL C-SHAPED STEEL HOLE SPACING



(c) Panels with a gap of between 50mm and 300mm between the underside of the panel and the roof(s) (no pitched frames). (d) Panels with a minimum distance between panel and roof edge of 2 s where s is the gap between the underside of the panel and the roof surface, as shown in Figure D8 (roof edge includes ridges with pitch $\geq 10^\circ$).



Pre-applied adhesive makes attachment easy. Adjustable "wings" make MRB the single SKU solution for any shape metal roof. Most versatile metal roof attachment on the market. Secure directly onto the sides of the crown of the roof panel through the pre-punched holes. Stainless-capped, self-piercing S-5! fasteners and Protea L-Foot are



A fully worked example of Ground-mounted Solar Panel Wind Load and Snow Pressure Calculation using ASCE 7-16. With the recent trends in the use of renewable energies to curb the effects of climate change, one of ???



2. Materials Used in Solar Panel Mounting Hardware. The durability and resilience of solar panel mounts depend heavily on the materials used in their construction. This section explores the standard materials and their properties that make them suitable for solar panel mounting applications. Aluminum: Durable and Lightweight



Optimizing Solar Panel Spacing: Essential Calculations for Installers, Procurement Managers, and EPC Experts 0. November 13, 2023 4:17 pm November 20, 2023. In the realm of solar energy, the efficiency and effectiveness of a solar installation hinge significantly on a myriad of factors, among which solar panel spacing plays a pivotal role. This

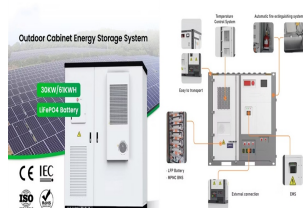
PHOTOVOLTAIC PANEL C-SHAPED STEEL HOLE SPACING



The elevation correction is therefore 50%. This may be excessive for rows that are less than about 4 times the height of the panel. To solve for X (the minimum distance between the rows), use the equation below: $X = L (\cos(\text{tilt}) + \sin(\text{tilt}))$???



This system utilizes C-shaped steel poles that are anchored into the ground using concrete foundations. The poles are then connected to crossbeams and rails, which support the solar panels. The C Steel Ground Mounting System offers several advantages, including high strength, flexibility in design, and ease of installation.



Helical piles and micropiles work well in compression and tension applications and are ideally suited for solar panel installation. At times, steel casing or re-bar is used for reinforcement. Typically "straight" shafts are drilled to the specified depth, but when necessary, a "belled" shaft can be used where an underreaming tool