

# PHOTOVOLTAIC PANEL BATTERY LIGHT WIRING DIAGRAM

114KWh ESS



114KWh ESS

What is a wiring diagram for solar panels? At its core, a wiring diagram for solar panels shows the connection between the different components of a solar power system. This diagram illustrates how solar panels, charge controllers, batteries, and inverters are interconnected to ensure a seamless flow of electricity.

114KWh ESS



114KWh ESS

What is a 12 volt Solar System wiring diagram? In summary, a 12 volt solar system wiring diagram provides a visual guide for understanding the electrical connections and components in a solar power system. It helps ensure that the system is installed correctly and functions efficiently by depicting how solar panels, batteries, charge controllers, and inverters are interconnected.

114KWh ESS



114KWh ESS

Does a solar panel charge a battery? The solar panel will also charge the battery but the charging time of the battery depends on the solar panel wattage, sunshine and ON/OFF condition of direct load. Related Solar Panel Wiring & Installation Diagrams: Wiring PV Panel to Charge Controller, 12V Battery & 12VDC Load.

114KWh ESS



114KWh ESS

Why do you need a solar wiring diagram? Whether you are planning to power a small cabin, an RV, or a boat, having a wiring diagram can help you ensure that your system is safe and efficient. The wiring diagram serves as a guide, showing you how to connect the different components of your solar system. This includes the solar panels, charge controller, battery bank, and inverter.

114KWh ESS



114KWh ESS

How do you wire a solar panel with a battery? 12V is the most common solar panel wiring connection with batteries, as most appliances are designed to operate on 12V. With a 12V system, parallel orientation is usually preferred for both panels and batteries. This is because increasing the amps allows for devices to be powered for much longer than they could be when wired in series.

# PHOTOVOLTAIC PANEL BATTERY LIGHT WIRING DIAGRAM

114KWh ESS



How do I connect a solar panel to a charge controller? We will directly connect them to the charge controller, battery and DC loads. The following solar panel wiring diagram shows that a 12V, 120W PV panel is connected to the solar charge controller (Panel Negative terminal of panel to the negative terminal of MPPT charge controller and vice versa for positive terminal).

114KWh ESS



In the last step I control a 5 volt motor with a 1.2 volt battery and the solar light IC. Although a current-limiting resistor between a solar panel and a battery is technically needed, it is not necessary if the battery will not be overcharged. In our ???



This is a 600 Watt Solar Panel Wiring Diagram with a complete list of DIY parts needed and step by step instructions on how to install it. you need enough to run from the end of the existing solar panel cables to the ???



Step-by-Step Guide on How to Wire Solar Panel to Battery. Wiring a solar panel to a battery can seem daunting, but breaking it down step-by-step simplifies the process. Follow these clear guidelines to ensure a successful connection. Step 1: Gather Materials. Collecting the necessary materials sets the stage for a smooth installation. Ensure



Diagrams, examples, and schematics for wiring solar panels in series and parallel and schematics for wiring batteries in series and parallel. For example, a 100W solar panel can make (under standard test conditions, STC) 18 volts (V) and 5.5 amps (A). A 1200Wh battery is rated by both the 12V and 100Ah capacity. When wiring components

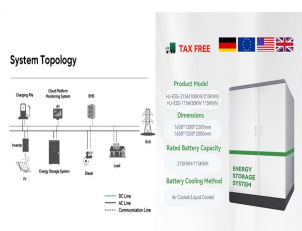
# PHOTOVOLTAIC PANEL BATTERY LIGHT WIRING DIAGRAM



Here is what you may have to set up an off-grid solar panel system:  
Estimate energy needs during daytime and nighttime; Calculate the required solar power; Select equipment and design a solar panel wiring diagram; Develop an electricity distribution scheme; Determine the optimal location of the solar panels and the wiring route



Bypass Diode and Blocking Diode Working used for Solar Panel Protection in Shaded Condition. In different types of solar panels designs, both the bypass and blocking diodes are included by the manufactures for protection, reliable and smooth operation. We will discuss both blocking and bypass diodes in solar panels with working and circuit diagrams in details ???



Discover the essential components and connections of a wiring diagram for solar panels, including the placement of inverters, charge controllers, and batteries. Learn how to properly wire your solar panel system to maximize efficiency and ???



When it comes to installing a solar system, one crucial aspect is the wiring diagram. A well-designed wiring diagram ensures the efficient and safe operation of the system, while also maximizing its potential to generate electricity. A 3 ???



The battery and solar panel connected to the charge controller. I connected the battery via a fuse block because I can only attach one wire to my battery's terminals. Here's the wiring diagram for DIY 12V solar lights for a shed: Note: This wiring diagram doesn't include the fuse block I used because it's unnecessary if you are able

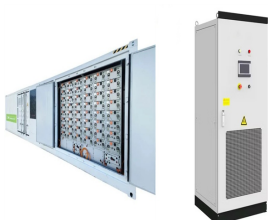
# PHOTOVOLTAIC PANEL BATTERY LIGHT WIRING DIAGRAM



The 4 diagrams below show a 400 watt solar panel wiring diagram wired in parallel and series with 2 x 200w and 4 x 100w panel configurations. For a full breakdown of the detail, comparisons, and even an interactive calculator for mixed panels, check out our complete guide to wiring your solar panels in series or parallel.



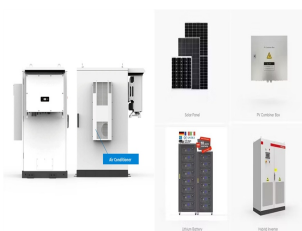
Components of the Wiring Diagram. A standard solar panel charge controller wiring diagram includes the solar panels (PV Array), the charge controller, battery, and load. Each of these components is interconnected, with specific points of contact, as shown in the wiring diagram. Familiarize yourself with these diagrams and the specific make and



Single Panel Installation guide and Diagram; 2 Panels in Series Wiring Diagram; 2 Panels in Parallel Wiring Diagram; Off Grid Kit Installation Instructions; The standard 12v solar panel kits come with 12v solar panel kit instructions and these are relatively easy to configure and install.



Create detailed documentation of your solar panel wiring diagrams, including equipment specifications, wiring diagrams, and installation instructions. Ensure that your design complies with local building codes, electrical regulations, and ???



The diagram also excludes wiring a power inverter ??? it sits on the load side of the battery. The 200 watt solar panel wiring diagram assumes 2 x 100w panels are being fitted. If you happen to be fitting 1 x 200w panel instead, see our 100 watt solar panel wiring diagram. We've included 2 diagrams below.

# PHOTOVOLTAIC PANEL BATTERY LIGHT WIRING DIAGRAM



This blog introduces how to properly set up a basic solar system, covering how to plug in and wire solar panels, how to hook up solar panels and connect solar panels to battery, and how to do solar panel wiring diagram. System Set Up. Note: When setting up your system, the solar panels should be out of the sun or covered for safety reasons.



A solar panel wiring diagram is a roadmap, a guide, and a blueprint. But instead of leading you to a hidden treasure or showing you the quickest route to your favorite restaurant, it's all about the journey of energy - from the radiant sun to your home appliances. It regulates the power coming from your solar panel and charges your battery



Sir, I have a solar system installed with inverter 1000W, solar panels 600w, 12w solar inverter hybrid 12v, battery one 12v 150ah, please advise /help may I add in parallel one more battery 12v 150 ah, to increase back up, NO harm to ???



It also increases the potential energy production of your panels in low light situations like cloudy days, and during dusk / dawn. Series vs Parallel Solar Panel Wiring 12V Solar Lithium Battery Bank Wiring Diagram. In the above ???



A 12 volt solar system wiring diagram is a visual representation of the electrical connections and components in a solar power system that operates at 12 volts. It shows how different ???

# PHOTOVOLTAIC PANEL BATTERY LIGHT WIRING DIAGRAM



Here's the wiring diagram showing how to connect a solar panel to a battery: It's important to understand the following: Don't connect a solar panel directly to a battery. Doing so can damage the battery. Instead, connect both battery and solar panel to a solar charge controller. It's recommended you fuse your system.



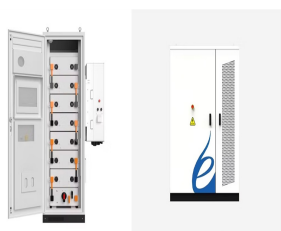
(Source: Electrical Technology) By combining parallel and series connections in a hybrid wiring configuration, you can address issues like shade and high voltage to maximize your electricity output and performance.. ???



This is an 800 Watt Solar Panel Wiring Diagram with a complete list of DIY parts needed and step by step instructions on how to install it. switch on LED lights inside the campervan. you need enough to run from ???



Solar panel diagrams are graphic representations of the connections you should make between each PV module and other components of the solar power system, including: Solar inverter; Charge controller; Solar ???



Photovoltaic (PV) systems are one of the most important renewable energy sources worldwide. Learning the basics of solar panel wiring is one of the most important tools in your repertoire of skills for safety and practical reasons, after all, residential PV installations feature voltages of up to 600V.



# PHOTOVOLTAIC PANEL BATTERY LIGHT WIRING DIAGRAM



Here's how the math worked out. Each 240W solar panel array connected 5 in series produced 1200 Watts, 186 Volts, & 8 Amps. Then connecting all 6 arrays in parallel created a 7200W, 186V, 50A solar panel ???



The following solar panel wiring diagram shows that an 120W, 12V solar panel is directly connected to the 12V charge controller. Battery and inverter are connected to the battery terminals (Positive & Negative) of the charge controller.



2) This problem is more serious - the solar panel, if left on it's own, can overcharge the battery. To avoid this you are better to use a charge controller, which has circuitry to stop power flowing from the solar panel to the battery ???



This diagram shows the flow of electricity from the solar panel, through the charge controller, to the battery, and then to your devices. The DC Fuse Box is connected to the battery and provides power to your DC devices, ???



Wiring PV Panel to Charge Controller, 12V Battery & 12VDC Load. In this simple solar panel wiring tutorial, we will show how to connect a solar panel to the solar charge controller, battery and direct DC load according to the rating. Keep in mind that AC load is not connected in this PV panel wiring tutorial which needs extra equipment such as UPS and ???

# PHOTOVOLTAIC PANEL BATTERY LIGHT WIRING DIAGRAM



A wiring diagram for a simple solar panel with LED light setup. To wire the solar panel to an LED light in a simple way: Strip the wire ends (about half an inch). Connect the wires using the crimping tool; Attach each contact to a connector for each wire, as indicated in the wiring diagram. Using these connectors, connect the solar panel to the



Wiring PV Panel to Charge Controller, 12V Battery & 12VDC Load. In this simple solar panel wiring tutorial, we will show how to connect a solar panel to the solar charge controller, battery and direct DC load according ???



If you are looking for a very simple way to create an led lamp that is solar-powered, this is a basic guide that offers just that. This blogger uses a 12 V solar panel that charges the battery during the daytime. And then, during the evening, the solar panel stops providing current. The battery becomes the power source to light the 1W LED bulb.