

# PHOTOVOLTAIC PANEL DOUBLE ROW COLUMN INSTALLATION CHECKLIST



How do I install a solar photovoltaic system? Installing solar photovoltaic systems requires specialized skills and knowledge. Installation should only be performed by qualified personnel. Before installing a solar photovoltaic system, installers should familiarize themselves with its mechanical and electrical requirements.



What should I know before installing a solar PV system? During the visitSolar PV installation checklistBefore the visit:Check local planning regulations to make sure you are allowed to install a PV system. Check that the solar PV company is MCS\* certified a d familiarise yourself with the Renewable Energy Consumer Code\* Don't accept a price over the phone, get the compan



How to choose a solar PV system? PV system being ofered and make sure it comes with a guarantee. You want to be sure that you are getting good value for money,which means ensuring that the system you buy is as efficient as possible.Checkthe maintenance requirements of your solar PV system. This may be something that is included in



Which materials should be used to install photovoltaic modules? JA Solar recommends that when installing modules at the seaside,stainless steel or aluminummaterials should be used to contact the photovoltaic modules,and the installation parts should be well protected from corrosion. The tilt angle of the modules is measured between the surface of the modules and a horizontal ground surface.



Do you need a pull line for a solar PV system? To facilitate the wiring of the solar PV system at a later date, the builder may also want to include a pull line in the conduit, particularly if the conduit run is lengthy or has multiple bends.

# PHOTOVOLTAIC PANEL DOUBLE ROW COLUMN INSTALLATION CHECKLIST



Should a PV array be installed before a DC switch-disconnector is installed? It should be completed prior to installing a PV array. This will allow effective electrical isolation of the d.c. system (via the d.c. switch-disconnector and PV module cable connectors) while the array is installed; and effective electrical isolation of the PV string/array;



environment and installation factors, all rooftop O&M should be carried out based on detailed case-by-case planning, in consultation with solar industry O&M professionals. This is the basis for all solar panel operations and maintenance should be consultation with professional solar companies for advice, and to consider the



Number of pieces: 16 Posts per row: Average of 9 or more Row lengths: Up to 94 Slope tolerances: Max Slope grade is 20% N/S and unlimited E/W Certifications: UL 3703, UL 2703 & IEC 62817 Details: Built tough for ???



??? Solar panel installation is not short duration work and will need scaffolding or similar equipment. ??? It should have a boarded working platform and full edge protection (double guard-rails and toe-boards) to stop people and tools from falling. Debris netting may also be necessary to prevent materials from falling on householders or



Good write up, Does this equation for determining row width hold good for single axis tracked panel rows which run north south. The panels in each row tilt maximum +55/-55 towards the sun at sunrise and sunset. Applying this height difference becomes  $32.28 \approx 32$ , module spacing = 105, minimum module spacing = 75 applying this in the last equation

# PHOTOVOLTAIC PANEL DOUBLE ROW COLUMN INSTALLATION CHECKLIST



A well-executed solar panel installation can provide numerous benefits, including reduced energy costs, increased property value, and a lower carbon footprint. By following this comprehensive checklist, homeowners and ???



The PV panel s shall be provided with performance warranties that guarantee the panels will produce at least 80% of the rated power after 25 years. (6) The PV panels shall be provided withat least 10-year product warranty. (7) The PV panels shall be installed according to the manufacturer's recommendation.



Streamline your PV module installation process with our free PV Module Installation Checklist. Designed specifically for solar projects, this checklist provides a detailed step-by-step guide to ???



It's a smart move for millions of homes. It's also an important decision. As you explore installing solar panels on your roof, you will find you have many choices to make. Using this checklist puts important information in your hands that you need to know before entering into ???



All decisions regarding the engineering of a large solar PV power system must be carefully considered so that initial decisions made with cost savings in mind do not result in more maintenance costs and decreased performance later in the system's lifespan. In general, the decisions regarding layout and shading potential, panel tilt angle and orientation, and PV ???

# PHOTOVOLTAIC PANEL DOUBLE ROW COLUMN INSTALLATION CHECKLIST



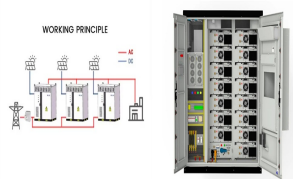
Identify electrical panel location and capacity for system connection. Check for potential obstacles like satellite dishes or vent pipes. Measure sunlight exposure at different times using a solar meter or sun pathfinder app. Design the system ???



Installing solar panels is a significant step towards sustainable energy, but proper preparation is key to a successful installation. A comprehensive pre-installation checklist ensures that every aspect of your solar project is carefully considered and planned. From assessing your roof's suitability to navigating local regulations, this checklist covers crucial steps that both ???



Photovoltaic/Solar System Submittal Checklist . Page . 2. of . 13.  
Residential PV Submittal Checklist . Residential Photovoltaic Checklist.  
Based on the 2016 California Residential Code (CRC) and the 2016 California Electrical Code (CEC) Article 690 . Residential PV system shall be installed in accordance with the current adopted



However, the efficiency of a solar panel may vary depending upon its make and model and therefore every solar panel must be inspected individually to ascertain its efficiency. Warranty. Solar rooftops typically have a performance warranty of 25 years. The warranty should always be taken into consideration while making such investments.



A flawless installation is key to unlocking the sun's full potential. However, this process can be hectic due to the systems' complexity, the need for precise measurements and placements, and the importance of adhering to safety regulations. Ensure a successful solar installation every time with our comprehensive checklist!

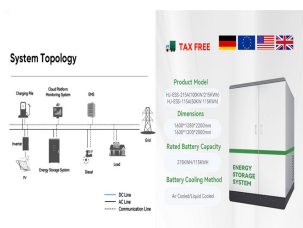
# PHOTOVOLTAIC PANEL DOUBLE ROW COLUMN INSTALLATION CHECKLIST



From the end of your rail, measure the distance of the width of the solar panel by half. Example: If a panel is 40 inches wide, measure 20 inches and make a line on the top of the rail. This should be the center of the solar panel ???



Understanding the Costs of Solar Panel Installation. The initial cost of solar panels in the UK can be eye-wateringly high. We're talking anywhere from ?5,000 to ?20,000 for a typical residential system. So there you have it, your solar panel checklist. Four simple things to mull over before you go all eco-warrior and stick panels on



A solar panel maintenance ensures the efficient functioning of solar panels and maximizes energy production. Read this detailed checklist for more usage. Let's look into some of the important Solar Panel Maintenance checklist. Top 5 Solar Panel Installation Companies; Solar Panel Cleaning Services in Chennai by Solar Squad App;



Jinko Solar Co., Ltd. ( hereinafter "JinkoSolar", NYSE: JKS) is a global solar technology leader characterized by integrated research, development and manufacturing of photovoltaic products. JinkoSolar serves more than 200 ???



One row or column of roof tiles is used for each side. Discover the ideal solar panel sizes for your installation. Learn about common dimensions, types of panels, and space requirements for residential and commercial solar systems. ???

# PHOTOVOLTAIC PANEL DOUBLE ROW COLUMN INSTALLATION CHECKLIST



Solar panel installation is a great way to save money on your electricity bill or reduce your carbon footprint. The process is relatively simple and there are a number of rebates and incentives available to help offset the cost. Solar panels typically last for 20-25 years, so they provide a long-term investment.



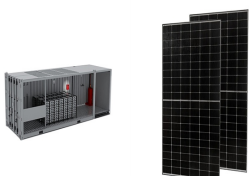
To help you with this process, we have prepared a solar PV system installation checklist that covers everything from before, during, and after the installation. By following this checklist, you can make sure that your solar ???



Photovoltaic/Solar System Submittal Checklist Page 7 of 15 Residential PV Submittal Checklist SOLAR PANEL DEAD WEIGHT LOADING CALCULATION System: Solar panel consists of \_\_\_\_\_ solar modules Mounting system has \_\_\_\_\_ points of ???



Photovoltaic/Solar System Submittal Checklist . Page . 2. of . 13.  
Residential PV Submittal Checklist . Residential Photovoltaic Checklist.  
Based on the 2016 California Residential Code (CRC) and the 2016 California Electrical Code (CEC) Article 690 . Residential PV system shall be installed in accordance with the current adopted



HANDING INFORMATION ??<< During the fork out of the modules, it is allowed of 2~3cm spacing between modules and walls or adjacent modules, and then move back slowly to prevent the carton from being damaged by friction between



# PHOTOVOLTAIC PANEL DOUBLE ROW COLUMN INSTALLATION CHECKLIST



Going Solar is more cost effective than you think Only in Nelson Mandela Bay (Port Elizabeth, Uitenhage and Despatch) is it possible for the private home owner to almost ZERO their electricity consumption account via the installation of Solar panels. [CLICK HERE](#) to request more information on how Straton Solar Power can assist you to lock in your electricity ???



Introduction to Solar Panel Installation: This solar panel installation checklist is designed to lead you through the steps necessary to install a series of solar panels on a residential or commercial property. The checklist walks through the overall steps in the process while detailing key considerations in the tasks. Within each task are form fields



Log installer and panel details: Capture installer credentials, company information, and specifications like panel count and weight. Assess building suitability: Check roof structure, ???



PV panel systems, i.e. those where the PV panels form part of the building envelope. While commercial ground-mounted PV systems are not covered in detail in this guide, the risk control principles discussed are similar. Hazards to PV installations other than fire ??? such as theft and flood ??? are mentioned for



3. Types of Solar Panel Mounts. Different types of solar panel mounts cater to various installation requirements and environmental conditions. If you understand the different types of mounting, you can choose the most suitable mount for a specific solar project. Fixed Mounts: The Basics