

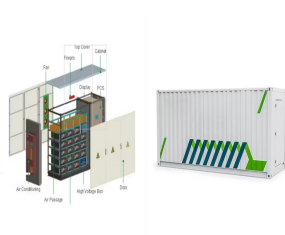
PHOTOVOLTAIC PANEL GRID CONNECTION PROCEDURES



Interconnection agreements with the local utility were secured, outlining the technical requirements and procedures for grid connection. Community Engagement: The project team conducted public meetings and informational sessions to address community concerns and highlight the benefits of the solar farm. Collaboration with local authorities and



Grid connection - will the system be connected to the national grid? In the vast majority of cases, it's better to connect to the national grid than try to go off-grid with solar PV if you can. If you try to go off-grid, you will either need to ???



3 Typical layout of grid connected PV power plants with VCB involved. PV cells generate power that is dependent on Sun's irradiation and temperature of the ambient. Cells are series-parallel connected into modules, panels and arrays in order to provide ability of power generation at the desired limits of DC voltage and current [16 ??? 18]. For

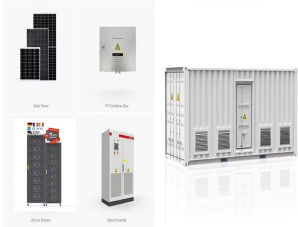


procedures relating to grid connection of small-scale renewable energy installations, a Working Group with members from power companies, the Government, trade associations, property developers and professional institutions was formed in 2005 to develop the Technical Guidelines on Grid Connection of Small-scale Renewable Energy Power Systems.



Connecting to the national grid Your installer will liaise with your District Network Operator (DNO) to connect your solar PV system to the national grid. For many reasons, including roof space, Feed-in Tariff banding and the potential cost of grid connection, most householders opt to ???

PHOTOVOLTAIC PANEL GRID CONNECTION PROCEDURES



Typical layout of grid connected PV power plants with VCB involved PV cells generate power that is dependent on Sun's irradiation and temperature of the ambient. Cells are series-parallel connected into modules, panels and arrays in order to provide ability of power generation at the desired limits of DC voltage and current [16-18].



Solar panel installation costs. Obviously, solar panel installation costs vary based on the size of the system, location, complexity and equipment chosen. But as a ballpark figure, PV costs about \$1,600-2,150 per kWp to install, making a standard 4kWp domestic system about \$6,500 (inc. ???



At present, the Grid connection process has three main steps. These are: The initial offer; The follow-up offer; Laying the cables and managing the connection; When a developer applies for Grid connection, this is ???



Solar PV connection to the grid Solar PV connection to the grid Once solar panels are on your roof, the electrical wiring can be done. The installer will register the site with the Microgeneration Certification Scheme, and you will get a certificate by email which you can use to claim Feed-in-Tariffs. The installer should also:



The PV panels shall be provided with performance warranties that guarantee the panels will produce at least 80% of the rated power after 25 years. (6) The PV panels shall be provided with at least 10-year product warranty. (7) The PV panels shall be installed according to the manufacturer's recommendation.

PHOTOVOLTAIC PANEL GRID CONNECTION PROCEDURES



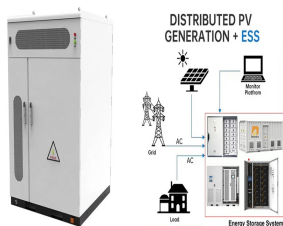
To avail CFA a residential consumer has to apply for installation of Grid Connected Roof Top Solar (GCRTS) through any of following two mechanisms: Mechanism 1: Applicable through National Portal for Roof top Solar Notification Simplification of Procedure; Virtual net metering ; Benchmark cost (FY 21-22, 20-21, 19-20, 18-19)



requirements for grid connection of REPSs. For REPSs of Aggregated Power Rating greater than 200 kW and up to 1,000 kW, additional requirements as described in 4.3 below will apply. This Technical Guidelines covers only the technical requirements for connection of REPS to the Grid. However, the addition of a grid connected REPS may require the



The purpose of this article is to give you a basic understanding of the concepts and rules for connecting a solar panel system to the utility grid and the household electrical box or meter. The utility connection for a PV solar system is ???



How to Install Solar Panels at Home? Are you considering installing solar panels at home to harness renewable energy and save on electricity bills? In this guide, we will take you through a detailed step-by-step process of installing solar panels at home, from planning to powering up your solar system. Things to Consider Before Solar Panel Installation: 1. Analyze ???



GRID-CONNECTED SOLAR PV SYSTEMS - INSTALL AND SUPERVISE GUIDELINES FOR ACCREDITED INSTALLERS ISSUE 13, April 2019 4 15 EXAMPLES OF SIGNAGE 41 15.1 String inverter systems 41 15.2 Micro inverter systems 42 15.3 Example of 1 X string, 1 X inverter IES connected to sub board 43 15.4 Example of 1 X inverter, 2 X arrays IES connected to ???

PHOTOVOLTAIC PANEL GRID CONNECTION PROCEDURES



The IET Code of Practice for Grid Connected Solar Photovoltaic Systems, published in 2015 (second edition available now), serves as a comprehensive guide for the design, installation, operation, and maintenance of grid-connected solar photovoltaic (PV) systems in the UK. Here's a summary of the key areas covered in the Code: Target Audience:



There are two basic approaches to connecting a grid-tied solar panel system, as shown in the wiring diagrams below. The most common is a "LOAD SIDE" connection, made AFTER the main breaker. The alternative is a "LINE OR ???



components and complete grid-connected photovoltaic systems describes a set of recommended methods and tests that may be used to verify integrity of hardware and installations, compliance with applicable standards/codes, and can be used to provide a The procedures in place today to provide component performance expectations along



Will my panels still work? Whether you're moving, performing repair and maintenance, or preparing for a big storm, disconnecting your Solar PV system first is always a good idea. In this post, we'll explain how to disconnect ???



Consulting with a qualified electrician or solar panel installer can help you navigate these regulations and ensure a smooth installation process. Once you have a clear understanding of the regulations, you can begin the process of ???

PHOTOVOLTAIC PANEL GRID CONNECTION PROCEDURES



efficiency of roof-mounted solar power systems. O& M is the largest cost in the life of a solar PV installation, beyond the initial installation, and Solar Energy UK hopes the Guideline will Note that the basis for all solar panel operations and maintenance should be consultation with professional solar companies for advice, and to consider



Solar panel fault-finding guide including examples and how to inspect and troubleshoot poorly performing solar systems. Common issues include solar cells shaded by dirt, leaves or mould. Check all isolators are all on, and the circuit breakers have not tripped off. Check the grid voltage on the inverter



Are you tired of relying on traditional energy sources that are costly and damaging to the environment? Have you considered switching to solar power, but feel overwhelmed by the process? Fear not, because in this article, we will guide you through the grid connection process for solar panel installations in???



Market Watch Cell Processing Fab & Facilities Thin Film Materials Power Generation PV Modules Utility-scale PV systems: grid connection requirements, test procedures and European harmonisation T. Degner, G. Arnold, M. Braun, D. Geibel & W. Heckmann, Institut für Solare Energieversorgungstechnik, Kassel,



Power Park Module (PPM) Generating Units that are connected to the network either through power electronics (e.g. solar PV or electricity storage devices connected through an inverter) or asynchronously (e.g. some wind turbines are induction or asynchronous generation).

PHOTOVOLTAIC PANEL GRID CONNECTION PROCEDURES



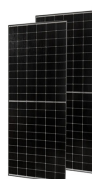
Here we will focus on systems that are connected to the utility transmission grid, variously referred to as utility-connected, grid-connected, grid-interconnected, grid-tied or grid-intertied systems. These systems generate the same quality of alternating current (AC) electricity as is provided by your utility. The energy generated by a grid



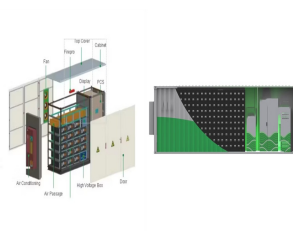
Technical Design Notes for Grid Connection of Small Renewable Energy (RE) Systems Grid Connection Requirements (PDF) Sets out the general technical requirements for the parallel connection of your RE systems connecting to CLP's 11 kV or 380V system. Feed-in Tariff Scheme Standard Metering Requirements Operation Procedure Template



See also: Wiring Solar Panels (Connection Types + Methods) Step 4.5 How to install solar panels and inverter . The focus here is to connect the solar panel to the inverter. This means that the solar array is grid-tied and ???



Only a small proportion of all PV panels installed globally are older than that. Even early PV panels still good after 20 years: The LEE-TISO testing centre for PV components at the University of Applied Sciences of Southern Switzerland installed Europe's first grid-connected PV plant, a 10kW roof, in May 1982.



At present, photovoltaic (PV) systems are taking a leading role as a solar-based renewable energy source (RES) because of their unique advantages. This trend is being increased especially in grid-connected applications because of the many benefits of using RESs in distributed generation (DG) systems. This new scenario imposes the requirement for an ???

PHOTOVOLTAIC PANEL GRID CONNECTION PROCEDURES



You must purchase the necessary solar components to connect solar panels to the grid. These include photovoltaic panels, a power inverter, and electrical wiring. Photovoltaic (PV) panels are responsible for converting ???



For a well-engineered solar panel installation, it is important to focus not only on the selection of solar panel technology & make, but also ??? be engaged to ensure correct handling of all components and flawless project execution following all Standard Operating Procedures. to install solar panels for a grid-connected or on-grid