

PHOTOVOLTAIC PANEL GUIDE AL6005-T5



Lianbang is committed to the design and production of complete systems and equipment for solar photovoltaic power generation, focusing on distributed photovoltaic power generation projects and photovoltaic power station a?|



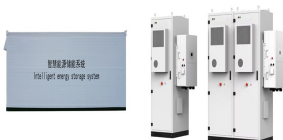
Products using aluminum alloy 6005-T5 (AL6005-T5) and stainless steel 304 (SUS 304), high strength, corrosion resistance is good. Screw Pile and concrete foundations optional. Compatible with most modules and most wind loads. Smart design reduce the difficulty of the installation on the most condition



Ground Solar Panel Structure-AL6005-T5 or Q235 or Q355-pv brackets Read more; Shopify. facebook. . Lianbang is a high-tech enterprise with multiple invention patents and software copyrights, passed the ISO9001 system certification, and has construction qualifications such as urban lighting. Lianbang is committed to the design and



It's roof mount solar panel rack AL6005-T5 profile rail. View more. 60mm Mini rail POW-TRB-D13. Suitable for corrugated metal roofs with trapezoidal roof profile-solar panels arranged in portrait/ landscape mode. science and technology innovation technology guide and industrial upgrading promoter, mainly engaged in solar photovoltaic system



Material: AL6005-T5, SUS304; Finish: AL 6005-T5 Anodized; Module orientation: Landscape or Portrait. Advantages: 1. Good heat absorption. 2. Good waterproof and rain protection, convenient installation, and flexibility. Waterproof a?|



Roof Solar Mounting System- Aluminium AL6005-T5 Solar PV Rails for Solar Photovoltaic PV in the Solar Panels category was listed for R340.00 on 7 Nov at 22:31 by AndTho9820 in Cape Town (ID:596726596) Rails for Solar Photovoltaic PV is a strong and lightweight metal that resists

PHOTOVOLTAIC PANEL GUIDE AL6005-T5

corrosion and rust, making it ideal for solar panel rails

PHOTOVOLTAIC PANEL GUIDE AL6005-T5



Aluminum solar panel end clamp group, which are applied to 30mm-50mm framed solar panel. With natural silver or anodized aluminum material AL6005-T5. With accurate design, the end-clamp can make the connection between the panels firmly. Aluminum framed panel clamps for fixing panel on the rail. Solar Panel Inter Clamp



Material: AL6005-T5, SUS304; Finish: AL 6005-T5 Anodized; Module orientation: Landscape or Portrait. Advantages: 1. Good heat absorption. 2. Good waterproof and rain protection, convenient installation, and flexibility. 3. Make full use of a?



Solar L-Feet for Solar Panel mounting to fasten rails, panel and different type of metal roof in solar panel installation. Our hardware with unparalleled strength and durability of AL6005-T5 and 303 stainless steel construction, offer easy installation and exceptional corrosion resistance. Here we can also offer full guide here for your



Pre-set for 30mm panel frames Inter Clamp Kit 30mm & 35mm Frames Bonding Pins Earthing Plates AL6005-T5 LMS-IC30-35-KIT-BP AL6005-T5 PV Mounting Rail 47 AL6005-T5 3150 / 4150 / 4400 / 5150 PV Mounting Rail H



Angels Solar provide solar mid clamps & end clamps for solar mounting structure, which are made of extruded anodized aluminium with 35mm/40mm/45mm/50mm length, and with accurate design, the mid clamp can make the connection a?



AS AL6005-T5 Solar Ground Mount Structure uses anodized aluminum alloy structure, making the whole system light-weight, durable, recyclable and highly strong. Flexibility in height and angle adjustment makes the system applicable a?

PHOTOVOLTAIC PANEL GUIDE AL6005-T5



AL6005-T5 Solar Panel Mounting System Bracket. AL6005-T5 solar panel mounting system bracket AL-Ground Mounting System is made of 100% aluminum to mount on concrete strip foundation or ground screw. It is featured with lightweight, strong structure, and recyclable material. Wanhos Solar AL-Ground Mounting System, with pre-assembled Beam, the



100% Anodized AL6005-T5; Stainless Steel SUS304: Warranty: 10 YEARS: Lifespan: 25 YEARS: Finished: Anodized AL 6005-T5; What is the optimal tilt angle for solar panel?: ____degree. 5: Send email to us, our sales will contact you with details and guide you.



Wetterbeständiges AL6005-T5 Aluminium als Materialwahl. Die Wahl des richtigen Materials für deine Balkonkraftwerk-Unterkonstruktion ist entscheidend, um Langlebigkeit und Funktionalität zu gewährleisten. Hier a?|



Installation Guide Conical symmetric Rail 87 L*58*90 With EPDM Washer ST6.3*19 1 2 Secondary Beam 90 L*66*90 AL6005-T5i 1/4 ?Anodized i 1/4 ? MRac (R) Waterproof Solar PV Mounting System Installation Site Foundation Tilt Angle Wind Load Snow Load Ground Clearance Applicable Solar Module Panel Layout Design Standard Material



Rooftop Solar Panel Mounting System AL6005-T5 Aluminum Rail, Find Details and Price about Solar Panel Mounting Aluminum Rail Rail Mounting Bracket from Rooftop Solar Panel Mounting System AL6005-T5 Aluminum Rail - Xiamen Solar First Energy Technology Co., Ltd.

PHOTOVOLTAIC PANEL GUIDE AL6005-T5



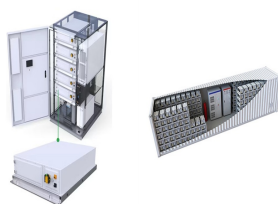
Design Guide für den Holzbau. Befestigungsempfehlungen für Terrassendielen. Kataloge; Über uns. News. Produktion. Messen. Unsere Partner. Newsletter. Karriere. Stellenmarkt. Ausbildung. Kontakt; Eurotec COACH. Aluminium, AL6005-T5 S304 *Diese Werte beziehen sich auf geeignete Solarmodule. Prüfen Sie im Vorfeld, ob das Modul auf der



Finally, fix the solar panel on the metal sheet rail with end clamp, fix the panels with medium pressure, and install all the solar panels in sequence. Features of this trapezoidal sheet metal rail for solar mounts: High availability, long service a?|



4. Temper: T4, T5, T6,T66. Description: 1) Material :Anodized AL6005-T5. 2) The solar roof mounting splice features easy and efficient installation . 3) Warranty :10 years. 4) Standard compliance : AS/NZS 1170 and other international a?|



Solar L-Feet for Solar Panel mounting to fasten rails, panel and different type of metal roof in solar panel installation. Our hardware with unparalleled strength and durability of AL6005-T5 and 303 stainless steel construction, offer easy a?|



Product Description. AL6005-T5 Aluminum Alloy Solar PV Module Mounting Rack Rail . Solar Mounting Rails adopt aluminium oxide, Matched solar mounting rails can insert the proximate matter, Mounting rails with advanced technology which made the proximate matter and fastener easy to work come true. It can reduce the installation time and cost.

PHOTOVOLTAIC PANEL GUIDE AL6005-T5



Kundenspezifische Solarpanel-Montage Al6005-T5 Aluminiumschiene kostenlose Probe und deren Angebot und Preisliste Beratung, China Dachmontagesystem Hersteller und Lieferanten, Willkommen zum Kauf unserer Produkte.



ERK nuts (Al6005-T5)-----1 Related Tags : PV mounting rail; solar pv mounting structure; solar mounting system; Photovoltaic mounting system; aluminum solar rail; Solar Panel Racking; Previous Post. ERK-R52 Rail & ERK-R52L rail end a?|



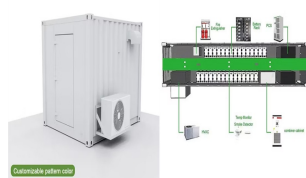
Personalizado panel solar montaje Al6005-T5 riel de aluminio muestra libre y su consulta de cotizacion y lista de precios, China Roof Mounting System fabricantes y proveedores,Bienvenido a comprar nuestros productos.



Material: Al6005-T5 or Q235 or Q355 Design standard:JIS c8955-2011,AS/NZS 1170.0,IEC62817 etc Foundation Type: Driven Pile or Ground screw or Concrete Regulation mode: The electric drive shaft or the manual pushrod Adjustable Angle: 10a??60 wind Load:

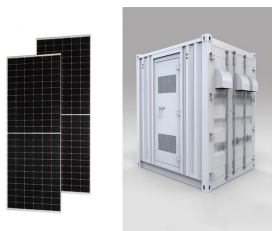


Our end clamps are made of extruded anodized aluminum 6005-T5. They are essential components for PV system installation,used for solar panels mounting structure, secure the edge of PV modules directly to mounting rails firmly. This Solar panel mounting end clamps 45mm are designed to work with the solar panels with frame height of 45mm.



The AL6005-T5 solar mounting rail offers unparalleled adaptability, effortless installation, and versatility to accommodate diverse panel types and orientations. Experience the ease of installation and reliability this a?|

PHOTOVOLTAIC PANEL GUIDE AL6005-T5



Frameless solar panel mid clamps is an important component in solar mounting installation, using for frameless solar panel, secure 2 solar panels to the mounting rails. frameless solar panel mounting mid clamps (Model: SPC-MC-L80) are made of Anodized Aluminum AL6005 T5 and SUS304 fasteners.



Solar PV Mounting frame for high-rise installations Standardized components are suitable for 60cell as well as for 72cell panels. Thanks to large adjustment, the mounting frame can cover most commonly sized balconies. Wind Load Tilt Angle Material Standard Warranty Landscape Framed Up to 50m/s Customized Main Structure: AL6005-T5