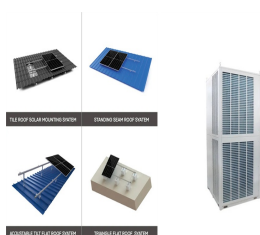


PHOTOVOLTAIC PANEL INSTALLATION INSTRUCTIONS DESIGN



Because the use of this manual and the conditions or methods of installation, operation, use and maintenance of photovoltaic (PV) product are beyond Renogy's control, Renogy does not accept responsibility and expressly disclaims liability for loss, damage, or expense arising out of or in any way connected with such



Flat roofs, in-roof integrations, and pitched roofs all need unique installation methods. The optimal procedures for PV installation are outlined in this article. These consist of flat roofs, in-roof mounting, and installation on pitched roofs. ???



Positive Design Load (IEC61215) B ROOF (T 1,T 2,T 3,T 4 Electrically test each solar panel as it is installed. Viridian Solar recommends that the panel installation is carried out by an installer with roofing competence. Don't rush it. Ensure the flashing edges are straight.

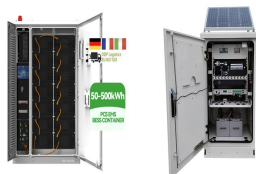


RISEN PV MODULE INSTALLATION AND MAINTENANCE MANUAL . DOCUMENT NO. RS/03-MR-01-2021 : COMPILER : Chen shuilin . caused by the operation reasons or design defects of the power generation system. 2. SCOPE The Solar PV modules described in this manual are terrestrial used only, cannot be used in space.



The 6-hour course covers fundamental principles behind working of a solar PV system, use of different components in a system, methodology of sizing these components and how these can be applied to building integrated systems. It includes detailed technical information and step-by-step methodology for design and sizing of off-grid solar PV systems.

PHOTOVOLTAIC PANEL INSTALLATION INSTRUCTIONS DESIGN



Page 2 of 11 - A consumer's guide to solar PV installation Welcome to your definitive guide to get you started on the path to powering your home with Solar PV panels. Solar PV, also known as solar photovoltaic, is widely regarded as the renewable energy of choice across the globe. The technology has risen in prominence and popularity over the



for mechanical load calculation according to the system design. 2.2.2 Site . S. election . In most applications, Jinko Solar PV modules should be installed in a location where they will receive maximum sunlight throughout the year. In the Northern Hemisphere, the module



Micro-Inverter Inverter which has one or two solar PV modules connected to it, typically installed at the back of the solar PV modules. Module The Solar PV panel including all solar PV cells, frame, and electrical connections Module Array A collection of multiple solar PV modules, making up part of the overall PV system.



DIY Solar Panel Installation is a great way to produce renewable energy and lower your energy bills. Read our guide on how to install solar panels yourself. varying energy efficiency ratings and can produce different amounts of ???



On the other hand, if you're connecting 42 x EcoFlow 400W rigid solar panels to 3 x DELTA Pro Ultra Inverters + Home Backup batteries, the diagram will be considerably more complicated.. For solar panel arrays with more than a few panels, you're going to need to take the particulars of your installation area into account to optimize performance.

PHOTOVOLTAIC PANEL INSTALLATION INSTRUCTIONS DESIGN



Solar panel installation costs. Obviously, solar panel installation costs vary based on the size of the system, location, complexity and equipment chosen. But as a ballpark figure, PV costs about ?1,600-2,150 per kWp to install, making a ???



The installer (or a dedicated surveyor) should always make sure the roof is strong enough before proceeding with a solar panel installation. How they'll do this depends on the type of roof, but it usually leads to a positive conclusion. Most modern roofs can hold much heavier objects than solar panels ??? such as people ??? because they come



A mains-connected PV installation generates electricity synchronised with the electricity supply. Installers are obliged to liase with the relevant Distribution Network Operator (DNO) in the following manner: Single installation covered by G83/1 ??? notification at or before day of ???



The mounting system will vary depending on the type of roof, such as flat, pitched, or shingle roofs. Common mounting methods include roof attachments, roof hooks, or solar panel racking systems. The mounting ???



audit to confirm that installation contractors are undertaking work safely. Solar Installers. Installation staff or contractors are involved in the direct installation of solar PV systems. Installers must have sufficient knowledge, qualifications, equipment, skills and safe systems of work to comply with the work health and safety legislation.

PHOTOVOLTAIC PANEL INSTALLATION INSTRUCTIONS DESIGN



In this Solar Panel Installation Guide, we'll discuss how to install a solar panel step by step in detail. Step-by-Step Instructions for Installing Solar Panels. Solar panels can provide power for both business and residential use. In both cases, photovoltaic panels are mounted on the roof to capture as much sunlight as possible and create as



Solar Panels perform at optimum capacity when placed in direct sunlight. When you install your Solar Power system, try to position your photovoltaic panels directly under the noontime sun for maximum efficiency ???



Section 2: The Photovoltaic PV System Design Process Solar Panel Placement. Effective PV system design involves strategic solar panel placement. Aim for maximum sun exposure all year round, considering the seasonal changes in the sun's trajectory. Commonly, this means south-facing panels in the northern hemisphere. System Sizing



This document summarizes the basics of solar PV systems and provides an example design. It discusses key components like solar panels, batteries, charge controllers and inverters. It then walks through the steps to size a system for a sample power consumption of 860 Watts per day, accounting for losses.



will be invalid. In addition, suggestions in this manual are to improve safety of module installation, which are tested and proved by practices. Please provide this manual to PV system users for reference and inform the advises on operation, maintenance requirements etc. 2 Introduction Laws and Regulation The mechanical and electrical

PHOTOVOLTAIC PANEL INSTALLATION INSTRUCTIONS DESIGN



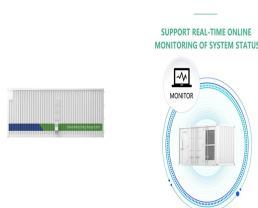
Easy to install 10 to 16 panels can be installed in around 6 hours. The GSE IN-ROOF SYSTEM is lightweight and takes up very little space: 116 half-frame per pallet. Two half-frames and many more PV modules. Since 2022, our GSE IN-ROOF SYSTEM frames come in two parts, making it possible to fit larger and wider modules! We help architects



The solar panel racking system is attached to these new timber supports. This includes guidance on performance eligibility, installation, certification, and design. ??? A typical solar array consists of several solar PV modules. These modules are typically 1.8m x 1.0m, and maintenance instructions



The Solar Panel Installation Process. Now that you've explored the options between DIY and professional installation let's delve into the intricacies of the solar panel installation process. This step-by-step guide will provide a comprehensive understanding of what to expect when installing solar panels on your residential property.



How to install solar panels wiring . Solar panel wiring installation is not overly complicated if you understand basic electricity procedures. First, there is a positive wire and a grounding wire. Most solar components have a ???



copy of this manual to the PV system owner for their reference, and inform them of all relevant aspects of safety, operation, and maintenance. 2 Codes and Regulations The mechanical and electrical installation of PV systems should be performed in accordance with all

PHOTOVOLTAIC PANEL INSTALLATION INSTRUCTIONS DESIGN



Receive a custom permit design for a solar panel system prepared by an experienced technician. This personalized solar design helps you to make an informed, unbiased decision to find the best system at the lowest cost. Understand your options for residential or commercial modules, on-grid or off-grid, backup systems, rooftop or ground mounting.