

# PHOTOVOLTAIC PANEL INSTALLATION METER PROJECT



Use our solar panel calculator to get an idea of how much you could save by installing a solar photovoltaic (PV) system at home. Use the calculator . Based on the information you provide, the solar panel calculator will estimate: What size solar panel system is right for you. How much you could save on your electricity bills.



**Purchase Your Photovoltaic System Components** Your next step is purchasing all components necessary for constructing a complete photovoltaic system: such as inverters, meters, batteries (if needed), wiring/cables and mounting hardware specific for your roofing material type ??? metal clips or lag bolts depending on whether its asphalt shingle or clay tile ???

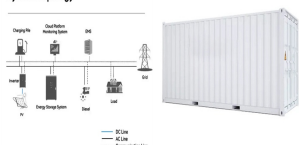
## Commercial and Industrial ESS

- Air Cooling / Liquid Cooling
- Plug-and-play Solution
- Renewable Energy Integration
- Modular Design for Flexible Expansion

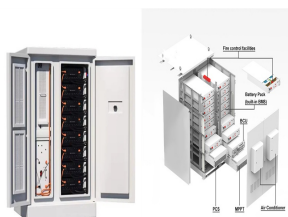


The solar PV Installation shall be of PV panels mounted on the rooftop of the building within the same Premise. 7. **CAPACITY LIMIT** not exceeding 60% of fuse rating (for direct meter) or 60% of the current transformer (CT) rating of the metering current transformers. 11 8. **CONNECTION OF SOLAR PV INSTALLATION**

## System Topology



Solar Panels perform at optimum capacity when placed in direct sunlight. When you install your Solar Power system, try to position your photovoltaic panels directly under the noontime sun for maximum efficiency ???



**Final Thoughts About Solar Panel Installation.** Solar panels are a significant investment that can lead to substantial long-term benefits for homeowners. While some homeowners can handle DIY solar power ???

# PHOTOVOLTAIC PANEL INSTALLATION METER PROJECT



A junction box is added between the utility meter and the main service panel. Then the wires from the utility meter, the main breaker panel, and the PV solar are connected in the junction box. An adequately sized PV service disconnect box must be used prior to making the connection between the junction box and the solar inverter.



solar PV system meets the current regulations, standards and best practices. 2.1.4 Solar PV systems intended for standalone operations (not connected in parallel with the Low Voltage distribution system are not covered in this document). Furthermore, Mechanical and civil design of the solar PV array are not within the scope of this document.



Installation of Solar PV Systems in New Territories Exempted Houses (NTEH) (commonly known as village houses) 5.3 Installation of Solar PV Systems in Private Buildings 5.4 Installation of Solar PV Systems in Idle Land ???



$N \text{ modules} = \frac{\text{Total size of the PV array (W)}}{\text{Rating of selected panels in peak-watts}}$ . Suppose, in our case the load is 3000 Wh/per day. To know the needed total W Peak of a solar panel capacity, we use PFG factor i.e. Total W Peak of PV panel capacity =  $3000 / 3.2 \text{ (PFG)} = 931 \text{ W Peak}$ . Now, the required number of PV panels are =  $931 / 160\text{W} = 5.8$ .



Documenting a Decade of PV Cost Declines (2021) Tutorial. Watch this video tutorial to learn how NREL analysts use a bottom-up methodology to model all system and project development costs for different PV systems. It's Part 3 of NREL's Solar ???

# PHOTOVOLTAIC PANEL INSTALLATION METER PROJECT



Project Sunroof is a solar calculator from Google that helps you map your roof's solar savings potential. Learn more, get an estimate and connect with providers. Enter a state, county, city, or zip code to see a solar estimate for the area, ???

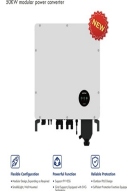


project model: Installing solar photovoltaic (pV) panels on a community building This project model is aimed at local communities looking to install solar photovoltaic (PV) panels on a community building in order to save carbon and reduce energy costs. Time 1 year Cost Low ???



Use our solar panel calculator to find your solar power needs and what panel size would meet them. (our energy conversion calculator can help if your electric meter uses other units). Solar hours in a day depend strongly on your location. The average installation cost for an 8 kW system is \$25,680.

8kW modular power converter



Here's how a solar panel installation works from start to finish, and what you should do before and after the installation. the AC cable will take it to your PV distribution board ??? that is, a fuse box for your solar panels. Most ground-mounted solar panel projects also require planning permission. Get in touch with your local



Correct Installation of Photovoltaic (PV) System. Home; Resources; Codes and references; PV system should not project more than 750mm from external wall. If 6 PV panels are erected on an independent supporting structure and the weight of each PV panel is around 26kg. The weight of the system supported by the structure will be 156kg (i.e

# PHOTOVOLTAIC PANEL INSTALLATION METER PROJECT



In today's rapidly evolving solar industry, ensuring the efficacy and safety of your photovoltaic (PV) system is essential. Megger offers extensive range of testing equipment curated for accurate and reliable testing during installation and maintenance so that your solar energy projects operate at peak performance and adhere to the highest safety standards.



Solar panels are generally quite reliable. Many owners don't experience technical faults in over a decade of ownership. Nearly seven in 10 owners had had no problems with their solar panels in our survey of over 2,000 owners.\* The most common ??? and most serious ??? problem owners face is with the



overview of the ceb solar pv scheme for domestic customers (households)  
In line with the measures announced in the National Budget Speech 2021-2022, the Central Electricity Board (CEB) is pleased to inform its customers and the general public of the launching of the " CEB Solar PV Scheme for Domestic Customers (Households) " on 26 November 2021.



The Rooftop Solar PV Comparison Update produced by CAN Europe and eco-union, with contributions from our members, is an updated version of the Rooftop Solar PV Comparison Report published by CAN Europe in May 2022. The report examines EU Member States (Bulgaria, France, Germany, Greece, Italy, Latvia, Lithuania, Portugal, Romania, Spain ???



"Wind loads on roof-based Photovoltaic systems", and BRE Digest 495 "Mechanical Installation of roof-mounted Photovoltaic systems", give guidance in this area. 1.2 Standards and Regulations Any PV system must comply with Health and Safety Requirements, BS 7671, and other relevant standards and Codes of Practice.

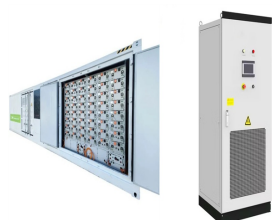
# PHOTOVOLTAIC PANEL INSTALLATION METER PROJECT



Estimated Reading Time: 7 minutes Solar panel systems in Singapore are gaining traction as the most viable energy source in the renewable energy transition. With our limited land space and sunny, tropical climate, solar is an ideal energy source on rooftops and even reservoirs. Since the energy crisis and surge in electricity tariffs in 2022, installing solar ???



Building on this basic introduction to PV monitoring, we explain in this article the major types of solar panel meters required throughout the different stages of a common solar energy project. Solar energy project phases. Solar energy projects can range from small kilowatt roof-top systems to large megawatt utility-scale farms.



1 Solar Photovoltaic (PV) Systems ? An Overview 4 1.1 Introduction 4 1.2 Types of Solar PV System 5 1.3 Solar PV Technology 6 ? ? U? ???> i ?- V ?> ` ?/ ? ?/iV } i?? n ? ? U? ?i?? ? vwV i V?? n ? ? U? vviV?? ? v ?/i <<i?>???i?



If your installation generates renewable electricity using solar PV, wind, hydro or AD and has a Total Installed Capacity (TIC) of up to 5MW or is a fossil fuel-derived CHP with a TIC up to 2kW, you could receive FIT payments if you meet the scheme eligibility requirements.



Learn the steps of the solar panel installation process. These steps ensure homeowners get a safe and reliable installation. The utility representative will inspect the project to make sure it is in accordance with the utilities guidelines. 8 Awesome New Technologies from Solar Power International 2018 Today, the Solar team took a

# PHOTOVOLTAIC PANEL INSTALLATION METER PROJECT



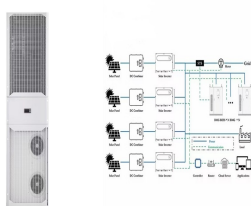
RPVI is a Registered Solar PV Investor under the NEM Programme that enables any company to become an investor under the solar PV project. Under RPVI, investors provide power purchase agreement (PPA) and Solar Leasing services. The solar PV Installation shall be of PV panels mounted on the rooftop of the building within the same premise



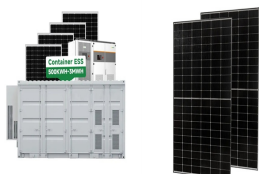
A 4kW solar panel system is suitable for the average home in the UK and costs around £5,000 ??? £6,000.; The estimated average yearly savings you can expect with a solar panel system range from £440 to £1,005.; If you install a 4kW ???



High-Efficiency Bifacial 585W 600W 650W PERC HJT Solar PV Panels.  
JA Solar 450W 460W 470W Mono PERC 182MM Photovoltaic Panels  
Hello, i would like to ask about Leap frog wiring method. I am designing a my first PV project and I consider to install my PV strings in a Landscape configuration, but I want to wire them using Leap frog Technique



??? After installation, your solar PV company will provide you with an operation and maintenance manual as well as data sheets and warranty information for the components. ??? Make sure your company/installer shows you how the system works and how to operate the system to



Different solar panels serve different needs. The most common type for homes is photovoltaic system installation, or solar PV panels. They're good at turning sunlight into electricity and won't break the bank. Thin-film solar panels, which are light and bendable, are also an option, though they're a bit less efficient.