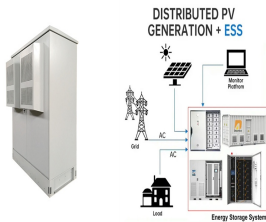


PHOTOVOLTAIC PANEL INSTALLATION RIGHT ANGLE CONNECTOR



Abstract??? Despite the installation of LPS, the possibility of direct lightning strikes to the solar PV panel frame/structure might still happen. Hence, this paper discusses the grounding strategies for solar PV panels to mitigate hazards from over-voltages when this ???



Inside a PV Connector The inside of a PV connector is rarely seen. Many PV connectors are field-made, which means their two parts are pushed together in the field during installation. Once locked, opening a field-made connector permanently destroys it. PVEL's field testing team obtained the image shown to the right using an advanced lab testing



The MC4 connector has become the industry standard for connecting photovoltaic panels for both residential and commercial installations. When it comes down to choosing the right type of connector for your installation, you ???



2. PV modules should be installed and maintained by qualified personnel. Only installation/service personnel should have access to the PV module installation site. 3. Keep children away from PV modules. 4. Prior to installation, do not store modules outdoors or in a damp environment to prevent glass from damage due to white efflorescence. 5.



Here's how a solar panel installation works from start to finish, and what you should do before and after the installation. the AC cable will take it to your PV distribution board ??? that is, a fuse box for your solar panels. The best angle and direction for solar panels in the UK Read full story. Josh Jackman 20 March 2024.

PHOTOVOLTAIC PANEL INSTALLATION

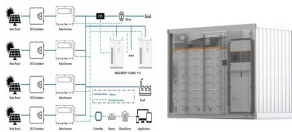
RIGHT ANGLE CONNECTOR



PV panel systems, i.e. those where the PV panels form part of the building envelope. While commercial ground-mounted PV systems are not covered in detail in this guide, the risk control principles discussed are similar. Hazards to PV installations other than fire ??? such as theft and flood ??? are mentioned for



Final Thoughts About Solar Panel Installation. Solar panels are a significant investment that can lead to substantial long-term benefits for homeowners. While some homeowners can handle DIY solar power installation processes, most should hire a professional to avoid potential issues, such as poor energy conversion or roof damage.



They are still suitable for solar installations but may need special brackets to correct the panels' angle. As with anything in life, adding to a process amps the price. The installation of photovoltaic panels should be carried out by a company with MCS accreditation. The different types of ground-based solar panels. Right now, there



The assembly itself is also quite easy and quick. Clamps are placed directly on the hem and then attached to the side with a screw. The rail is then mounted on the clamp using a T-head screw and an angle connector. Installation of photovoltaic panels on a flat roof. To mount photovoltaic panels on a flat roof, use, for example:



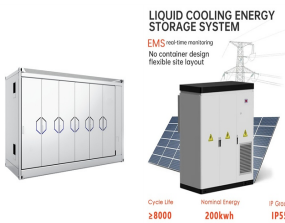
Fixing the first panel on the rails requires extra care. If it's not exactly at right-angles to the rails, each successive panel will progressively slew out of line. panels are clamped to the rail, leaving an 18mm inter-panel gap. PV panels are usually supplied with a pair of fixed leads, terminating in a sealed box on the reverse side.

PHOTOVOLTAIC PANEL INSTALLATION

RIGHT ANGLE CONNECTOR



N-TopCon Solar Panel; Balcony Solar Power System; The installation angle of the modules must be set according to the midday position of the sun on the winter solstice. This day is December 21st at 12 noon. This angle maximizes energy production and minimizes shading. Cable routing plays a significant role in PV installations. Improper



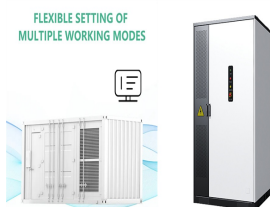
To ensure a successful solar panel installation, you'll need the right tools and equipment. Having a clear understanding of the necessary tools, selecting quality equipment, and considering safety gear are essential steps in preparing for your solar panel installation. Consider the tilt angle of the panels as well, as adjusting the angle



However, it is still important to learn how to properly install a PV connector, since in some cases or sections, the system may require you to make the connection yourself. This will probably occur if you do not find an ???



Durability: PV wire connectors made from quality materials can withstand harsh environmental conditions, such as extreme temperatures and UV exposure. 4. Installation Methods for PV Wire Connectors Proper installation of PV wire connectors is essential to maintain the integrity and safety of a solar panel system.



What is the best angle for solar panels in the UK? The best all-year-round angle for PV (photovoltaic) solar panels in the UK is 35-40 degrees. The best angle for each region within the UK will vary slightly within this. For seasonal changes, the best angle for summertime is 20 degrees and 50 degrees in winter.

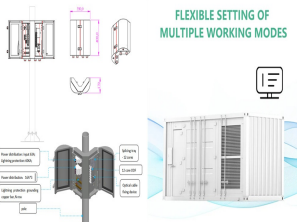
PHOTOVOLTAIC PANEL INSTALLATION

RIGHT ANGLE CONNECTOR

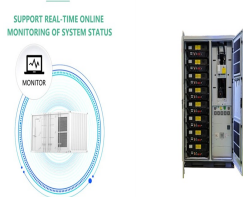


r = PV panel efficiency (%) A = area of PV panel (m²) For example, a PV panel with an area of 1.6 m², efficiency of 15% and annual average solar radiation of 1700 kWh/m²/year would generate: $E = 1700 * 0.15 * 1.6 = 408$ kWh/year

2. Energy Demand Calculation. Knowing the power consumption of your house is crucial. The formula is: $D = P * t$. Where:



The reason is to locate the right ideal tilt angle. As per the Another critical angle to be considered in the installation of PV panel is the orientation of the PV panels. This is on



Solar Panel Connector. Renhotec solar panel connectors are PV (Photovoltaic) connectors that meet MC's standards. Solar Panel connectors are mainly used in the solar field and are usually used to connect solar panels. With the solar connector, we can push the connectors of adjacent solar panels together by hand, thus quickly constructing a



All decisions regarding the engineering of a large solar PV power system must be carefully considered so that initial decisions made with cost savings in mind do not result in more maintenance costs and decreased performance later in the system's lifespan. In general, the decisions regarding layout and shading potential, panel tilt angle and orientation, and PV ???



The best angle to install solar panels in the UK is around 40 degrees. This will ensure that the solar panels get the most possible daylight throughout the year, so they can produce lots of electricity. However, you can ???

PHOTOVOLTAIC PANEL INSTALLATION

RIGHT ANGLE CONNECTOR



SolarEdge reserves the right to change the manual without prior notice.
Horizontal Installation: 60 type PV module cable length ???1.2m, 72 type PV module cable length covered by a hard-board or UV-proof materials or when the angle of the modules facing the sun is placed on smooth and flat surfaces.



JA PV Module Installation Manual 1. Aluminum Frame 2. Glass 3. Encapsulating EVA 4. Cell 5. Backsheet 6. Silicone adhesive 7. Junction Box 8. Label 9. Cable 10 nconnector 11. Mounting hole 12. Grounding hole 13. Drainage holes 14. Cell Figure 1 Module Structure 3.1 Product Identification



In this part, we'll introduce how to lock and unlock a solar panel connector, crimp it, and install it in series and parallel for optimal results. Locking and Unlocking Solar Panel Connectors. The solar panel connector has a locking and unlocking mechanism, which ensures the various parts of the solar system stay securely in place.



the installation angle of the photovoltaic panel is set at 30°, with the side in contact with . the bracket considered as the back surface and the opposite side as the front surface.



In this guide, we'll walk you through the best angle for solar panels in the UK and why getting the right install angle is essential to maximising your solar PV system, no matter ???

PHOTOVOLTAIC PANEL INSTALLATION

RIGHT ANGLE CONNECTOR



To maximize efficiency and reduce energy costs, you'll want to find the best solar panel tilt angle for your solar power system. When the sun is lower in the sky, solar panels need a greater tilt angle to receive direct sunlight. When the sun is higher, panels require less tilt.



The Basics of Solar Panel Connectors which are lifeline of solar PV system: Male and Female Connectors, MC4 Connectors, T4 Connectors and MC3 Connectors. A comprehensive guide to PV solar panel connectors will help you understand all about the uses and benefits of solar panel connectors. The crimping tool is an indispensable part of the



the carton box; keep the connectors dry and clean during the installing. Note that the pollution from sand, dust and water will result in arcs and electrical shock of connectors. We suggest the customers add rubber connector covers as the protection method specific to the area with heavy dust seaside with higher



Connectors for solar panels are a vital part of any solar PV system, with an average setup using over 100 of them. Show more Choose the right solar panels and solar equipment for your needsTake the solar quiz and ???



As the world increasingly embraces clean, renewable energy, solar panel systems have become popular for homeowners and businesses. A crucial component of these systems is the solar connector, specifically the ???

PHOTOVOLTAIC PANEL INSTALLATION RIGHT ANGLE CONNECTOR



When designing a photovoltaic (PV) solar panel system, one of the most critical factors to consider is the tilt angle of the panels. The tilt angle, or the angle at which the panels are inclined relative to the ground, significantly impacts the system's efficiency and energy production. Getting the angle right ensures that your solar panels capture the maximum ???