

PHOTOVOLTAIC PANEL LIGHT SENSING

PRINCIPLE DIAGRAM EXPLANATION



How do you know if a solar panel is octagonal? If you have solar panels installed nearby, go there and look closely at them. You will notice each panel consists of several small rectangular or octagonal units. These units are nothing but solar cells. A solar panel consists of numerous solar cells. Solar cells are the engine of the photovoltaic system.



How do solar panels work? Solar panels work by converting the light radiation from the sun to Direct Current (DC) electricity through a reaction inside the silicon layers of the solar panel. The sun's energy is absorbed by PV cells, which creates electrical charges that move in a current. We will look at the following vital aspects of solar panels in this discussion:



What determines the efficiency of a solar panel? The efficiency of a solar panel—that is, its ability to convert sunlight into electricity—is determined by several factors, including the quality of the silicon used, the configuration of the solar cells, and the panel's exposure to sunlight. The silicon used in solar cells is the foundation of their efficiency.



What are the components of a solar panel system? A typical solar panel system consists of four main components: solar panels, an inverter, an AC breaker panel, and a net meter. Components of solar panel system: solar panels, inverter, AC breaker panel, and net meter. Solar panels are a fundamental part of the system. They have the ability to absorb light and transform it into electricity.



How do photovoltaic cells work? To grasp how photovoltaic cells work, it's key to understand the solar cell principle. This principle centers on the photovoltaic effect, where light becomes electrical energy at an atomic scale. Thanks to semiconductor technology, especially silicon, we can turn sunlight into electricity, heralding a promising renewable energy source.

PHOTOVOLTAIC PANEL LIGHT SENSING PRINCIPLE DIAGRAM EXPLANATION



What is photovoltaic effect? This interaction between sunlight and solar cells is termed the photovoltaic effect. The phenomenon was discovered by Edmond Becquerel in 1839. When we close the circuit by connecting the upper and rear end of the solar cell, the excited electrons flow into the circuit. The diagram below depicts the same. Simple working of a solar cell



Experimental setup: In the Figure below, the experimental setup of the real-time virtual instrumentation system is shown. Apart PV panel, Arduino UNO board, voltage and current sensor, different components are used in the ???



There have sensors, through them solar panels turn on and turn off automatically by sensing outdoor light with the help of light source. They are designed to work at night. Working Principle: The Working Principle of Solar Street Light is very simple. Photo voltaic solar cells convert the radiation of sun light into electrical energy.



This article delves into the working principle of solar panels, exploring their ability to convert sunlight into electricity through the photovoltaic effect. It highlights advancements in technology and materials that are making solar energy more efficient and accessible, underscoring solar power's crucial role in the transition to sustainable energy.



Photovoltaic Cell Working Principle. A photovoltaic cell works on the same principle as that of the diode, which is to allow the flow of electric current to flow in a single direction and resist the reversal of the same current, i.e., causing only forward bias current.; When light is incident on the surface of a cell, it consists of photons which are absorbed by the ???

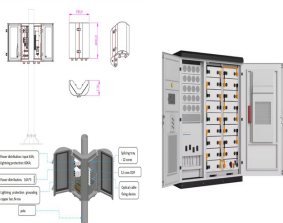
PHOTOVOLTAIC PANEL LIGHT SENSING PRINCIPLE DIAGRAM EXPLANATION



The theory of solar cells explains the process by which light energy in photons is converted into electric current when the photons strike a suitable semiconductor device. The theoretical studies are of practical use because they predict the fundamental limits of a solar cell, and give guidance on the phenomena that contribute to losses and solar cell efficiency.



After all, you can only listen to an explanation of volts, watts, inverters, and solar cells so many times before it all starts to sound the same. Solar Panel Diagram. We learned that solar cells are the building blocks of a solar panel (also known as a "solar module"). The solar panel absorbs the light of the sun and converts it



Solar panels transform sunlight into electricity using the solar cell principle. The process involves semiconductor technology and the photovoltaic effect. Light absorption initiates electron movement within the ???



FREE COURSE!! Learn how solar panels work and unravel the mysteries of how solar power works. We'll discuss the different types of solar panels, how solar power works, the different solar panels for homes, the efficiency of ???



Download scientific diagram | Principle of light sensors and motion control of PV panel from publication: Design of a Solar Tracker System for PV Power Plants | This paper deals with the design

PHOTOVOLTAIC PANEL LIGHT SENSING

PRINCIPLE DIAGRAM EXPLANATION



Mini Solar Panel. 2. SG90 Micro-servo motor. 1. Rotary potentiometer (generic) 2. Pushbutton Switch, Pushbutton. Tools and machines. 1. PLX-DAQ. Apps and platforms. 1. Arduino IDE. Project description. \geq threshold_value) { //Change 147 position only if light difference is bigger then the threshold_value 148 if 149 (diffazi > 0) {150 if



Solar panel circuit diagrams are a great way to understand how solar energy works. The diagram shows a basic setup of how photovoltaic (PV) cells absorb sunlight, convert it into electricity, and then allow for the ???



The dark-detecting (solar light sensor) circuit turns on the LED light, which consumes the battery-stored electricity generated by the solar panel during the daytime. The solar light sensor measures the amount of ambient illuminance and turns on the light once the illuminance has fallen below a certain level.



A solar cell diagram visually represents the components and working principle of a photovoltaic (PV) cell. The diagram illustrates the conversion of sunlight into electricity via semiconductors, highlighting the key ???



However, PV panels have a non-linear voltage-current characteristic, which depends on environmental factors such as solar irradiation and temperature, and give very low efficiency.

PHOTOVOLTAIC PANEL LIGHT SENSING

PRINCIPLE DIAGRAM EXPLANATION



When panels produce excess solar power, the net metering allows it to transport to the utility grid, rewarding energy credit in exchange. It is where the output of the solar inverter gets attached. From the AC breaker ???



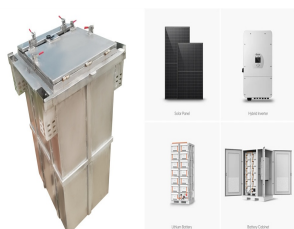
3 Description of your Solar PV system Figure 1 ??? Diagram showing typical components of a solar PV system The main components of a solar photovoltaic (PV) system are: Solar PV panels ??? convert sunlight into electricity. Inverter ??? this might be fitted in the loft and converts the electricity from the panels into the form of electricity which is used in the home.



This article delves into the working principle of solar panels, exploring their ability to convert sunlight into electricity through the photovoltaic effect. It highlights advancements in technology and materials that are making ???



Photoelectric sensor working principle. The basic operation of a Photoelectric Sensor is, the sensor sends out a light beam from the part of the sensor called the emitter, and this light beam travels to the part of the sensor that collects the light called the receiver.



A Light Sensor generates an output signal indicating the intensity of light by measuring the radiant energy that exists in a very narrow range of frequencies basically called "light", and which ranges in frequency from "Infra-red" to "Visible" up to "Ultraviolet" light spectrum.. The light sensor is a passive devices that convert this "light energy" whether visible ???

PHOTOVOLTAIC PANEL LIGHT SENSING PRINCIPLE DIAGRAM EXPLANATION



Parameters: Type 1: Type 2: Working: Passive tracking devices use natural heat from the sun to move panels.: Active tracking devices adjust solar panels by evaluating sunlight and finding the best position: Open Loop ???



After installing a solar panel system, the orientation problem arises because of the sun's position variation relative to a collection point throughout the day. It is, therefore, necessary to change the position of the photovoltaic panels to follow the sun and capture the maximum incident beam. This work describes our methodology for the simulation and the ???



panel determines how much solar energy it can collect. A large panel can collect more solar energy than a small panel simply because the area is larger. Efficiency is the ability of the solar panel to convert light to electricity. The efficiency depends on ???



Photon energy is very important in turning solar power into electricity. When sunlight hits a solar panel, it powers up electrons. This is the first step in making these electrons move to generate electricity. Without using photon energy well, solar panels wouldn't work as effectively. Electric Field Influence



How solar panels work: The photovoltaic effect explained What are solar panels made of? Solar energy is the light and heat that come from the sun. To understand how it's produced, let's start with the smallest form of solar ???

PHOTOVOLTAIC PANEL LIGHT SENSING PRINCIPLE DIAGRAM EXPLANATION



At the stage of metabolizing roughly 17.6 percent, the most common cells, known as poly cells, generated a 250W solar panel with 60 cells. These cells are connected by a thin copper sheet coated in a tin alloy. The ???



Photovoltaic cells are semiconductor devices that can generate electrical energy based on energy of light that they absorb. They are also often called solar cells because their primary use is to generate electricity specifically from sunlight, ???



Cars can use solar power, homes can use solar power, and even some highway lights use solar power. There are plenty of applications that can be used with solar energy, and the options are limitless. Even in areas that aren't connected to solar grids can now have power, and solar energy can even bring distilled water to the homes of people not already exposed to it.



Key learnings: Photovoltaic Cell Defined: A photovoltaic cell, also known as a solar cell, is defined as a device that converts light into electricity using the photovoltaic effect.; Working Principle: The solar cell working principle involves converting light energy into electrical energy by separating light-induced charge carriers within a semiconductor.



Once charged, solar lights function by using a photocell sensor, commonly known as a light-dependent resistor (LDR). This sensor detects when ambient light levels diminish at dusk, signaling the system to initiate power from the battery.