

PHOTOVOLTAIC PANEL LOAD CONFIGURATION SCHEME



What is a solar panel wiring diagram? A solar panel wiring diagram (also known as a solar panel schematic) is a technical sketch detailing what equipment you need for a solar system as well as how everything should connect together. Therea??s no such thing as a single correct diagram a?? several wiring configurations can produce the same result.



How to design a solar PV system? When designing a PV system, location is the starting point. The amount of solar access received by the photovoltaic modules is crucial to the financial feasibility of any PV system. Latitude is a primary factor. 2.1.2. Solar Irradiance



What are the sizing principles for grid connected and stand-alone PV systems? The sizing principles for grid connected and stand-alone PV systems are based on different design and functional requirements. Provide supplemental power to facility loads. Failure of PV system does not result in loss of loads. Designed to meet a specific electrical load requirement. Failure of PV system results in loss of load.



How to calculate the size of a standalone PV system? The size of the standalone PV system depends on the load demand. The load and its operating time vary for different appliances, therefore special care must be taken during energy demand calculations. The energy consumption of the load can be determined by multiplying the power rating (W) of the load by its number of hours of operation.



What are the Design & sizing principles of solar PV system? DESIGN &SIZING PRINCIPLES Appropriate system design and component sizing is fundamental requirement for reliable operation, better performance, safety and longevity of solar PV system. The sizing principles for grid connected and stand-alone PV systems are based on different design and functional requirements.

PHOTOVOLTAIC PANEL LOAD CONFIGURATION SCHEME

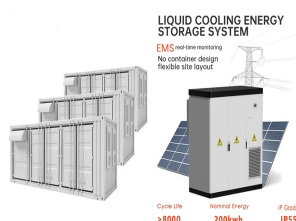


What is a stand-alone PV system? Stand-alone PV systems can be considered a type of banking system. The battery is the bank account. The PV array produces energy (income) and charges the battery (deposits), and the electrical loads consume energy (withdrawals). The sizing objective for stand-alone PV system is a critical balance between energy supply and demand.



To find the solar panel output, use the following solar power formula:

$$\text{output} = \text{solar panel kilowatts} \times \text{environmental factor} \times \text{solar hours per day}$$
. The output will be given in kWh, and, in practice, it will depend on how sunny it is since the number of solar hours per day is just an average.



Inverter Surge or Peak Power Output. The peak power rating is very important for off-grid systems but not always critical for a hybrid (grid-tie) system. If you plan on powering high-surge appliances such as water pumps, compressors, washing machines and power tools, the inverter must be able to handle the high inductive surge loads, often referred to as LRA or a?



zation for optimization and configuration of photovoltaic panel and battery system is applied using MATLAB and hourly solar radiation, ambient temperature data, and load demand. find the optimal sizes of hybrid PV/wind/battery schemes to meet the load demand for remote areas in Egypt- Sinai. The obtained results were compared with the GA



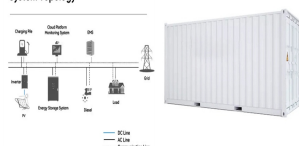
1. Calculate Your Power Load. If you haven't already, you'll need to calculate the total power you need from your solar panel system. The power load necessary for a home backup system will look much different from the energy consumption of a small van or camping trip.. Go through each device and appliance you want to run and check the instruction manual a?

PHOTOVOLTAIC PANEL LOAD CONFIGURATION SCHEME



A solar photovoltaic system or PV system is an electricity generation system with a combination of various components such as PV panels, inverter, battery, mounting structures, etc. Nowadays, of the various renewable energy technologies available, PV is one of the fastest-growing renewable energy options. With the dramatic reduction of the manufacturing cost of solar panels, they will a?|

System Topology



Learning how to wire solar panels requires learning key concepts, choosing the right inverter, planning the configuration for the system, learning how to do the wiring, and more. In this article we will teach you all of a?|



Click above to learn more about how software can help you design and sell solar systems. Basic concepts of solar panel wiring (aka stringing) To have a functional solar PV system, you need to wire the panels together to create an electrical circuit through which current will flow, and you also need to wire the panels to the inverter that will convert the DC power produced by the panels a?|



All decisions regarding the engineering of a large solar PV power system must be carefully considered so that initial decisions made with cost savings in mind do not result in more maintenance costs and decreased performance later in the system's lifespan. In general, the decisions regarding layout and shading potential, panel tilt angle and orientation, and PV a?|



If you reside in an area that receives 5 hours of maximum sunlight and your solar panel has a rating of 200 watts, the output of your solar panel can be calculated as follows: Daily watt hours = $5 \times 200 \times 0.75 = 750\text{Wh}$. That means a solar panel that has a capacity of 200 watts can produce approximately 750 watt-hours. Solar Panel Efficiency

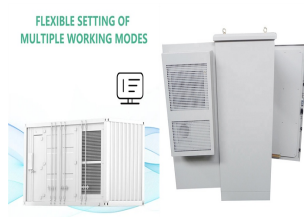
PHOTOVOLTAIC PANEL LOAD CONFIGURATION SCHEME



Finding an unshaded spot is best, but sometimes shading is unavoidable. Some solar panel systems can minimise the impact of shading using "optimisers". Solar optimisers help improve the overall performance of your solar panel system. So, if one panel is shaded, it doesn't impact how much electricity the other panels can generate.



Step 1: Using the screens below, input the location of your system, load profile and annual energy consumption and PV module data (manufacturer, model, orientation, quantity etc.). Step 2: Select an inverter manufacturer and click on GET BEST CONFIGURATION. Our automatic configuration manager will then search for the optimal connection of your PV modules and the inverter that a?]



There are lots of software packages are exists in the area of modeling, simulation and analysis of PV system viz. Solar Pro, PV-Design Pro, PV-Spice, PV CAD, but they have some disadvantages like very expensive software, only commercially available package, interfacing problem with electronic power system and proprietary available packages (Fara a?]



Designing a solar panel wiring diagram is both an art and a science, requiring careful planning, attention to detail, and a thorough understanding of electrical principles. Here's a step-by-step guide to help you bring your solar vision to a?]



Photovoltaic (PV) systems (or PV systems) convert sunlight into electricity using semiconductor materials. A photovoltaic system does not need bright sunlight in order to operate. It can also generate electricity on cloudy and rainy days from reflected sunlight. PV systems can be designed as Stand-alone or grid-connected systems.

PHOTOVOLTAIC PANEL LOAD CONFIGURATION SCHEME



Blocking Diode and Bypass Diodes in a Solar Panel Junction Box; How to Wire Solar Panel to 120-230V AC Load and Inverter? How to Wire Solar Panel to 12V DC Load and Battery? How to Wire Solar Panels in Series & Batteries in Parallel? 12/24/48V System; How to Wire Solar Panels in Parallel & Batteries in Series? 24V System. How to Wire Solar



A case study of various standalone hybrid system combinations for a remote location in India by using HOMER and evaluate best optimal hybrid system configuration such as PVa??Winda??Battery??DG with respective total NPC, operating cost, COE, and also emission. The optimal hybrid system has following advantages (Table s 8 and 9). a?c



Solar Panel Calculator is an online tool used in electrical engineering to estimate the total power output, solar system output voltage and current when the number of solar panel units connected in series or parallel, panel efficiency, total area and total width. These estimations can be derived from the input values of number of solar panels, each panel unit power and voltage, width and



Discover the perfect solar solution tailored for your home with Enphase system estimator. Estimate solar system size with or without battery back up. Connect with expert installers. The solar panel and storage sizing calculator allows you to input information about your lifestyle to help you decide on your solar panel and solar storage



Limitations of external factors such as PV intensity. The configuration of Photovoltaic penetration can also affect control strategies of ESS. In order to make the operation timing of ESS accurate, there are three types of the relationship between the capacity and load of the PV energy storage system: (1)

PHOTOVOLTAIC PANEL LOAD CONFIGURATION SCHEME



Figure 1 illustrates the graphical diagram of the proposed hybrid energy scheme, which involves a photovoltaic panel, a power conditioner unit, such as an inverter/convertor, batteries, load dumper, and charge controller. a?|



The detailed model of a grid-connected PV system is illustrated in Fig. 5, and consists of the solar PV arrangement and its PCS to the electric utility grid . PV panels are electrically combined in series to form a string (and sometimes stacked in parallel) in order to provide the desired output power required for the DG application.



paper selection of site [11]. PV SYSTEM The general configuration of stand-alone solar PV power system is given in Fig. 1. A stand-alone system based upon solarpower comprises of a PV panels array to collect solar energy, a charge controller as a a?|



ASCE 7 Guidelines. The American Society of Civil Engineers (ASCE) provides guidelines for the structural design of solar panel installations through their publication, ASCE 7 1. These guidelines cover the essential factors that influence solar panel installations, such as wind loads, snow loads, and dead loads, to ensure the safe and efficient operation of these a?|



Grid-tied solar systems. Grid-tied systems are solar panel installations that are connected to the utility power grid. With a grid-connected system, a home can use the solar energy produced by its solar panels and electricity that comes from the utility grid.. If the solar panels generate more electricity than a home needs, the excess is sent to the grid.

PHOTOVOLTAIC PANEL LOAD CONFIGURATION SCHEME



Parameters of a Solar Cell and Characteristics of a PV Panel; How to Design a Solar Photovoltaic Powered DC Water Pump? Measurement of Short circuit current (I_{SC}): While measuring the I_{SC} , no-load should be connected across a?



The growing focus on solar energy has led to an expansion of large solar energy projects globally. However, the appearance of shades in large-scale photovoltaic arrays drastically decreases the output power and several peaks of power in the $P_{a??V}$ characteristics. The most commonly adopted total cross tie (TCT) interconnection patterns that effectively minimize a?



According to the learning curve model results, learning using a single-factor model is more in line with the learning pattern for China's PV panel technology. The learning rate for PV panels in China is 16.8%. By 2050, the a?



Configuration: Load Tap: Backfeed Breaker (Opposite End) A backfeed breaker can be used to connect a solar PV system to the load-side of a service. There are several different ways this can be done per the NEC but the most common method for solar residential installs is by connecting it to the end of a busbar using the 120% rule (705.12(D



Equipped with an array of solar cells that capture and convert sunlight, a PV system can significantly cut your electricity bills and reduce your carbon footprint. Intriguing, isn't it? How Does a PV System Work? A PV system works in a a?

PHOTOVOLTAIC PANEL LOAD CONFIGURATION SCHEME



Home > Support > How to Design Solar PV System: How to Design Solar PV System: What is solar PV system? Solar photovoltaic system or Solar power system is one of renewable energy system which uses PV modules to convert sunlight into electricity. The electricity generated can be either stored or used directly, fed back into grid line or combined with one or more other a?|