

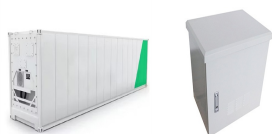
PHOTOVOLTAIC PANEL POWER SIZE



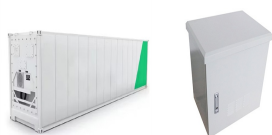
What is a photovoltaic (PV) solar panel? This solar panel is a photovoltaic (PV) panel that offers several advantages over the standard solar panel size, making them a good alternative. Some of the benefits of this solar panel type include: Sleek weight and flexibility ??? because of its weight, this solar panel is easier to install in different locations.



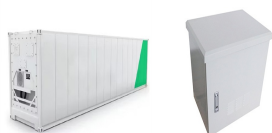
How big are solar panels? Solar panels come in many sizes. Residential solar panels are usually around 1.6 to 2 metres tall and 1 metre wide. Are bigger solar panels better? Not necessarily. Solar panels with bigger dimensions may produce more power but may not always be the best fit depending on your roof space and energy needs. How heavy are solar panels?



How much power does a domestic solar panel produce? Domestic solar panels come with an average power output of 250-400 watts. In terms of dimensions, domestic solar panels average 1.7 metres long, and 1 metre wide and have a thickness of 3cm to 5cm. Domestic solar panels can weigh between 18kg - 20kg on average.



What size solar panel should I buy in the UK? Nevertheless, the typical size of a residential solar panel in the UK is 250W to 450W. It's important to note that when considering solar panels for your home or business, it's recommended to focus primarily on the wattage or power output rather than the physical dimensions.

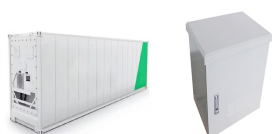


How does the size of a solar panel affect electricity production? The physical size of a solar panel directly influences the number of solar cells it can house. This, in turn, determines the amount of electricity that can be generated from the captured solar energy. The dimensions of solar panels can vary depending on their intended use.

PHOTOVOLTAIC PANEL POWER SIZE



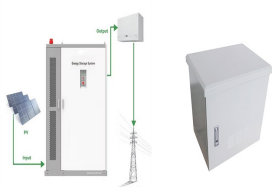
Does the size of a solar panel matter? Yes, absolutely! The size of a solar panel matters as it affects the amount of energy it can produce. The larger the solar panel, the more electricity it can produce. For example, a 300W solar panel is typically larger than a 250W solar panel, and it can produce more electricity than the latter.



Find out about energy suppliers' solar panel packages and how much solar panels cost. Battery storage products and prices The batteries below range from the size of a small computer to the size of a washing machine.



Determine the solar panel yield (r), which represents the ratio of the electrical power (in KWp) of one solar panel divided by the area of one panel. The yield is usually given as a percentage. 3. Also Read: What Size Cable for 300W Solar Panel? 2. Calculate the number of panels needed.



The application of the system will determine the system configuration and size. For example, residential grid-connected PV systems are rated less than 20 kW, commercial systems are rated from 20 kW to 1MW, and utility energy-storage systems are rated at more than 1MW. Solar panel power output is measured in watts. Power output ratings range



In the UK market, solar panel sizes can refer to both the power output (measured in watts) and its physical dimensions. In this article, we'll look at the common solar panel sizes ???



What are 600 Watt solar panels? A 600-watt solar panel is a solar photovoltaic (PV) panel designed to generate usable electricity from sunlight. The wattage is used to measure its efficiency in power output capacity. Hence, the higher the wattage, the higher the output.

PHOTOVOLTAIC PANEL POWER SIZE



4kW solar panel systems are best for medium-sized homes with 2 ??? 3 bedrooms.; A 4kW system will produce up to 3,400kWh of energy per year.; It will cost approximately ?5,000 ??? ?6,000 to fit a 4kW solar system, with a return on investment of ?10,500 ??? ?11,500 and a break-even point of 8 years.; Solar panels have been popping up on rooftops across the country for a number of ???



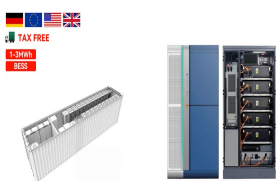
Solar panel sizes guide with residential & commercial solar panel dimensions, different types & how many solar panels you need for your home. and rated power. For a system size comparison, let's say it's a 4-kW system size production and its estimated annual production is 6,400 kWh, then the number of solar panels needed is 12.



A 4kW solar panel system costs around ?9,500 to buy and install. If you want to include a battery in the installation, this will add around ?2,000 to the price, for an overall cost of ?11,500.



The global solar power market size was valued at USD 253.69 billion in 2023 and is projected to be worth USD 273 billion in 2024 and reach USD 436.36 billion by 2032, exhibiting a CAGR of 6% during the forecast period. North America dominated the solar power industry with a market share of 41.30% in 2023. The solar structure would cost an



Solar panel sizes and wattage (power output) Let's look at the basics: Wattage is a critical factor in understanding solar power and solar panel dimensions. It specifies how much power a ???

PHOTOVOLTAIC PANEL POWER SIZE



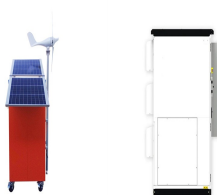
NREL's PVWatts (R) Calculator Estimates the energy production of grid-connected photovoltaic (PV) energy systems throughout the world. It allows homeowners, small building owners, installers and manufacturers to easily develop estimates of ???



A standard 60-cell solar panel weighs about 18kg (40 pounds), while a 72-cell solar panel weighs about 23.5kg (52 pounds). 72-cell panels are also taller than 60-cell panels, making them more difficult to carry and maneuver.



The race to produce the most efficient solar panel heats up. Until mid-2024, SunPower, now known as Maxeon, was still in the top spot with the new Maxeon 7 series. Maxeon (Sunpower) led the solar industry for over a decade until lesser-known manufacturer Aiko Solar launched the advanced Neostar Series panels in 2023 with an impressive 23.6% module ???



Choosing the right solar panel size for your home involves a few considerations. These include power output, physical dimensions, and weight to ensure optimal energy generation. The average domestic solar panel outputs ???



If total power needed is 5kW, the difference would be either 20 250W panels or 16 300W panels. The size of the solar panel proportionally relates to the number of solar cells inside the panel as well as the rated watt ???

PHOTOVOLTAIC PANEL POWER SIZE



How big is a 2kW PV Solar System? 2kW Solar Panel Size. As we said, there are different styles of solar systems and panels, so this answer can vary. That said, a standard 2kW solar panel system needs approx. 10-14m² of roof space. Lower power generation: A 2kW solar panel system won't produce a lot of electricity compared to larger



On average, you need about 100 square feet of roof space for every kilowatt of solar power. Solar Panel Efficiency and its Importance The Role of Solar Cell Size in Solar Panel Efficiency. Solar cell size impacts the overall performance and efficiency of a solar panel. Larger sized cells typically have a higher wattage per cell, translating



The first factor in calculating solar panel output is the power rating. There are mainly 3 different classes of solar panels: Small solar panels: Here you can simply input what size solar panel you have (100W, 200W, 300W, and so on) and how many peak sun hours you get (average is about 5 hours).



The more solar cells contained on a solar panel, the more power that panel can generate. Typically solar cell sizes have been 156mm x 156mm, however, they have been increasing over the last 3-4 years which has been ???

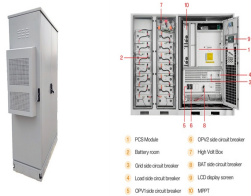


The average solar panel weight can vary according to the solar panel dimensions and type. Standard residential solar panels weigh between 40 to 50 pounds (18 to 23 kg). How big are solar panels means that a typical solar panel system for a ???

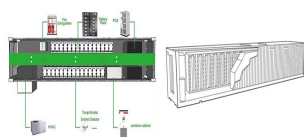


If you reside in an area that receives 5 hours of maximum sunlight and your solar panel has a rating of 200 watts, the output of your solar panel can be calculated as follows: Daily watt hours = 5 x 200 x 0.75 = ???

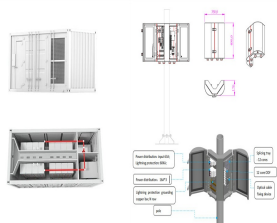
PHOTOVOLTAIC PANEL POWER SIZE



Solar panel size refers to their physical dimensions, which affect installation space, while wattage indicates power output and electricity generation. Different types, such as monocrystalline, polycrystalline, and thin ???



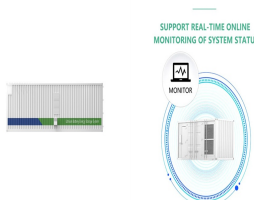
Solar Panel Size. It focuses on maximum electricity generation and overall capacity rather than the quantity of panels. To calculate the required system size, multiply the number of panels by the output. For example, a 6.6 ???



Solar Panel Power Output and Size Essentials. Solar panels' power output typically ranges from 250 to 400 watts. This directly influences the amount of electricity generated. For an average UK home, a system size between 3kW and 5kW is adequate. This equates to six to twelve panels based on energy consumption.



Panel power in Wp. Solar panels are generally rated by their watt peak (Wp) value. When someone refers to their "440 panels", it typically means those panels have a watt peak power output of 440. Peak? A 440 Wp panel would produce 440 W of power under perfect conditions. The "peak" value represents the maximum output the panel can achieve.



Solar panel efficiency, output, a good warranty, and a trusted brand are more important than focusing on solar panel size. How to measure solar panel size Residential solar panels usually hold 60 cells, while larger 72-cell panels are used for commercial installations.



For a residential solar panel, size is fairly consistent across manufacturers: 65 inches (1.65 meters) by 39 inches (1 meter) is the average solar panel size that you find on the roofs of houses. However, solar panels can vary in terms of efficiency, so the key factor when

PHOTOVOLTAIC PANEL POWER SIZE

choosing solar panels should be their power rating. Most residential

PHOTOVOLTAIC PANEL POWER SIZE



Solar panel sizes and wattage (power output) Let's look at the basics: Wattage is a critical factor in understanding solar power and solar panel dimensions. It specifies how much power a panel can produce under the best conditions. A side-by-side comparison of the 3 most common solar panel sizes and power outputs.



Use our solar panel calculator to get an idea of how much you could save by installing a solar photovoltaic (PV) system at home. Use the calculator . Based on the information you provide, the solar panel calculator will estimate: What size solar panel system is right for you. How much you could save on your electricity bills.



Check out all the need-to-know things of solar panel output here! The Eco Experts . Solar Panels. Solar Panels. Back. Solar Panels A solar panel's power output is measured in kilowatts (kW) Solar PV system size ???